

HISTORY INFORMATION FOR THE FOLLOWING MANUAL:

REPAIR MANUAL

RB2G Chassis

Segment: HE



KDL-55W700B

<i>MODEL</i>	<i>COMMANDER</i>	<i>DESTINATION</i>
<i>KDL-50W700B</i>	<i>RM-YD103</i>	<i>US/CND</i>
<i>KDL-55W700B</i>	<i>RM-YD103</i>	<i>US/CND</i>

Version	Date	Subject
1.0	07/07/2014	Original Manual Release Date.
2.0	07/31/2014	Updated Section 4 - Exploded View/Part Number Information. Page 21 replaced.

TABLE OF CONTENTS

Cautions and Warnings	ii	Section 4 - Exploded View/Part Number Information	19
Section 1 - Specifications and Layouts	1	Table Top Stand.....	19
Specifications	1	KDL-50W700B	20
Checking the Accessories.....	1	KDL-55W700B	21
Board Layout	2	Smart Core Block	22
KDL-50W700B.....	2	Connectors	23
KDL-55W700B.....	2	Screws.....	24
Smart Core Block.....	2	Section 5 - Accessories/Part Number Information	25
Wire Dressing	3	Accessories and Packaging	25
KDL-50W700B.....	3	Miscellaneous.....	25
KDL-55W700B.....	3	Optional Accessories	25
Smart Core Block.....	3	Remote Commander	25
Section 2 - Troubleshooting	4	Appendix A: Encryption Key Components	A-1
Diagnosing the Error	4		
Viewing the Self Check Diagnosis History.....	4		
Triage Chart.....	5		
Flowcharts and Diagrams.....	6		
Overall Block Diagram.....	6		
Power and Control Block Diagram.....	7		
No Power Flowchart	8		
Standby LED Blinking Flowchart	9		
Video Distortion Flowchart.....	10		
No 3D Viewing.....	11		
Section 3 - Repair Information	12		
Repairing the TV.....	12		
Removing the Rear Cover	12		
Replacing the Main Board / Tuner Board	13		
Removing the Speakers	17		
Replacing the Switch Unit	17		
Removing the Smart Core Block	18		

CAUTIONS AND WARNINGS

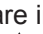
CAUTION!!

These servicing instructions are for use by qualified service personnel only. To reduce the risk of electric shock, do not perform any servicing other than that contained in the operating instructions unless you are qualified to do so.

WARNING!!

An isolation transformer should be used during any service to avoid possible shock hazard, in case of live chassis.

SAFETY-RELATED COMPONENT WARNING!!

There are critical components used in LCD color TVs that are important for safety. These components are identified with shading and  mark on the schematic diagrams and the parts list. It is essential that these critical parts be replaced only with the part number specified in the parts list to prevent electric shock, fire or other hazard.

NOTE: Do not modify the original design without obtaining written permission from the manufacturer or you will void the original parts and labor warranty.

ATTENTION!!

For safety reasons, component level repair of the Power Supply Boards and/or the Inverter Boards is prohibited.

CAUTION ABOUT THE LITHIUM BATTERY!!

Replace only with the same or equivalent type. Danger of explosion may occur if battery is replaced incorrectly. Exposed battery should not be in contact with water.


ATTENTION!!

Ces instructions de service sont à l'usage du personnel de service qualifié seulement. Pour prévenir le risque de choc électrique, ne pas faire l'entretien autre que celui contenu dans le Mode d'emploi à moins que vous soyez qualifié faire ainsi.

ALERTE!!

Afin d'éviter tout risque d'électrocution provenant d'un châssis sous tension, un transformateur d'isolement doit être utilisé lors de tout dépannage.

ATTENTION AUX COMPOSANTS RELATIFS A LA SECURITE!!

Les composants identifiés par une trame et par une marque  sur les schémas de principe, les vues explosées et les listes de pièces sont d'une importance critique pour la sécurité du fonctionnement. Ne les remplacer que par des composants Sony dont le numéro de pièce est indiqué dans le présent manuel ou dans des suppléments publiés par Sony. Les réglages de circuit dont l'importance est critique pour la sécurité du fonctionnement sont identifiés dans le présent manuel. Suivre ces procédures lors de chaque remplacement de composants critiques, ou lorsqu'un mauvais fonctionnement suspecte.

ATTENTION!!

Pour des raisons de sécurité, Interdire de réparer ou remplacer les composants dans les blocs d'alimentation et/ou sur les modules d'inverseur.

AVERTISSEMENT AU SUJET DE LA PILE AU LITHIUM!!

Ne remplacez qu'avec une pile de type identique ou équivalent. Danger d'explosion si la pile est remplacée incorrectement. La pile exposée ne devrait pas être mise en contact avec de l'eau.

CAUTIONS AND WARNINGS

SAFETY CHECK-OUT

After correcting the original service problem, perform the following safety checks before releasing the set to the customer:

1. Check the area of your repair for unsoldered or poorly soldered connections. Check the entire board surface for solder splashes and bridges.
2. Check the interboard wiring to ensure that no wires are “pinched” or touching high-wattage resistors.
3. Check that all control knobs, shields, covers, ground straps and mounting hardware have been replaced. Be absolutely certain that you have replaced all the insulators.
4. Look for unauthorized replacement parts, particularly transistors, that were installed during a previous repair. Point them out to the customer and recommend their replacement.
5. Look for parts which, though functioning, show obvious signs of deterioration. Point them out to the customer and recommend their replacement.
6. Check the line cords for cracks and abrasion. Recommend the replacement of any such line cord to the customer.
7. Check the antenna terminals, metal trim, “metallized” knobs, screws and all other exposed metal parts for AC leakage. Check leakage as described in “Leakage Test”.

LEAKAGE TEST

The AC leakage from any exposed metal part to earth ground and from all exposed metal parts to any exposed metal part having a return to chassis, must not exceed 0.5 mA (500 microamperes). Leakage current can be measured by any one of three methods.

1. A commercial leakage tester.
Follow the manufacturers' instructions provided with the tester.
2. A battery-operated AC milliammeter.

3. Measuring the voltage drop across a resistor by means of a VOM or battery-operated AC voltmeter. The “limit” indication is 0.75 V, so analog meters must have an accurate low voltage scale. Nearly all battery-operated digital multimeters that have a 2 VAC range are suitable. (see Figure A)

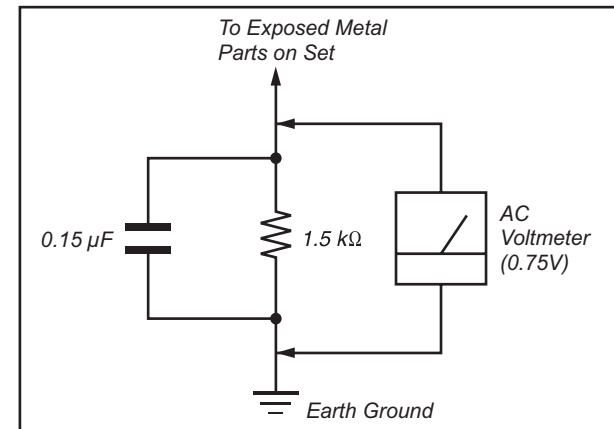


Figure A. Use an AC voltmeter to check AC leakage.

HOW TO FIND A GOOD EARTH GROUND

The cover-plate retaining screw on most AC outlet boxes is at earth ground. Verify the AC outlet box retaining screw ground by connecting a 60W to 100W incandescent (not a neon or fluorescent lamp) between the hot side of the receptacle and the retaining screw. Try both slots, if necessary, to locate the hot side on the line; the lamp should light at normal brilliance if the screw is at ground potential. (see Figure B)

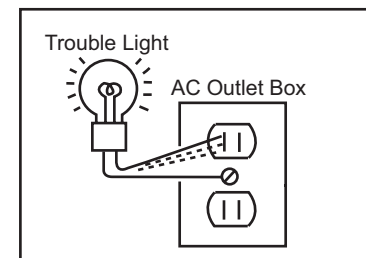


Figure B. Checking for earth ground.

SECTION 1 - SPECIFICATIONS AND LAYOUTS

SPECIFICATIONS

System	
Television system	NTSC: American TV standard ATSC (8VSB terrestrial): ATSC compliant 8VSB QAM on cable: ANSI/SCTE 07 2000 (Does not include CableCARD functionality)
Channel coverage	Analog terrestrial: 2 - 69 / Digital terrestrial: 2 - 69 Analog Cable: 1 - 135 / Digital Cable: 1 - 135
Panel system	LCD (Liquid Crystal Display) Panel, LED Backlight
Speaker output	8 W + 8 W
Wireless technology	Protocol IEEE802.11a/b/g/n
Input/Output jacks	
CABLE/ANTENNA	75-ohm external terminal for RF inputs
VIDEO IN 1	Video / Audio input (phono jacks)
COMPONENT IN	YPbPr (Component Video): 1080p (60 Hz), 1080i (60 Hz), 720p (60 Hz), 480p, 480i Audio input (phono jacks)
VIDEO IN 2	Video input (common phono pin with Y input)
HDMI IN 1/2/3/4	Video: 1080p (30, 60 Hz), 1080/24p, 1080i (60 Hz), 720p (30, 60 Hz), 720/24p, 480p, 480i, PC Formats Audio: 5.1 channel linear PCM: 32, 44.1 and 48 kHz, 16, 20 and 24 bits, Dolby Digital ARC (Audio Return Channel) (HDMI IN 2 only)
MHL (common with HDMI IN 1)	Video: 1080p (30 Hz), 1080/24p, 1080i (60Hz), 720p (30, 60 Hz), 720/24p, 480p, 480i Audio: 5.1 channel linear PCM: 32, 44.1 and 48 kHz, 16, 20 and 24 bits, Dolby Digital
AUDIO OUT/	Audio output (stereo mini jack) Headphone jack (supports Subwoofer out)
DIGITAL AUDIO OUT (OPTICAL)	Digital optical jack (Two channel linear PCM, Dolby Digital)
LAN	10BASE-T/100BASE-TX connector (Connection speed may differ depending on the network environment. 10BASE-T/100BASE-TX communication rate and communication quality are not guaranteed for this TV)
USB/DLNA	Refer to the i-Manual for supported formats
DC IN 19.5 V	AC adapter input (DC 19.5 V)

Model name		KDL-55W700B	KDL-50W700B
Power and others			
Power requirement		19.5 V DC with AC adapter Rating: Input 110 V - 240 V AC, 50/60 Hz (U.S.A./Canada 120 V AC, 60 Hz)	
Power consumption	in use	91 W	
	in standby	Less than 0.4 W with 120 V AC and less than 0.5 W with 240 V AC	
Screen size * (inches measured diagonally)		54,6 inches (55 class)	49,5 inches (50 class)
Display resolution		1,920 dots (horizontal) × 1,080 lines (vertical)	
Dimensions *	with stand (mm) (inches)	1,234 × 764 × 197 44 ⁵ / ₈ × 30 ¹ / ₈ × 7 ⁷ / ₈	1,116 × 693 × 179 44 × 27 ³ / ₈ × 7 ¹ / ₈
	without stand (mm) (inches)	1,116 × 656 × 64 48 ⁵ / ₈ × 28 ¹ / ₂ × 2 ⁵ / ₈	1,116 × 656 × 64 44 × 25 ⁷ / ₈ × 2 ⁵ / ₈
	wall-mount hole pattern (mm)	300 × 300	
	wall-mount screw size (mm)	M6 (8-12 mm)	
Mass *	with stand (kg)/(lb.)	18,0 / 39,7	14,8 / 25,8
	without stand (kg)/(lb.)	17,2 / 37,9	10,5 / 23,2
Others			
Optional accessories		Camera and Microphone Unit: CMU-BR200/CMU-BR100 One-touch Remote Control: RMF-YD001 Touchpad Remote Control: RMF-YD003 Wireless Subwoofer: SWF-BR100 MHL Cable: DLC-MB10/DLC-MB20/DLC-MC20	
Operating temperature		32 °F – 104 °F (0 °C – 40 °C)	

* Screen size, dimensions and mass are approximate values.

- Optional accessories availability depends on countries/region/TV model/stock.
- Design and specifications are subject to change without notice.
- This TV set incorporates MHL 2.

CHECKING THE ACCESSORIES

- IR Remote Control (1)*
- Size AAA batteries (2)
- AC Power Cord (1)
- AC Adapter (1)
- Cable Holder (1)
- Table-Top Stand (1)*
- Fixing screws for Table-Top Stand (M5 × 16) (2)

- Assembling screws for Table-Top Stand (M5 × 16) (2)
- Operating Instructions and other documents
- Wall-Mount Bracket accessories

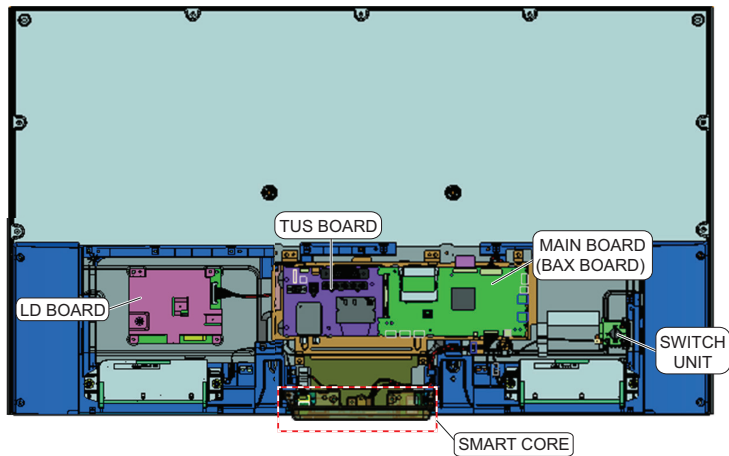
* Refer to the model name printed on the remote control.

* Assembling the Table-Top Stand is required. Refer to the supplied Table-Top Stand leaflet to assemble the Table-Top Stand.

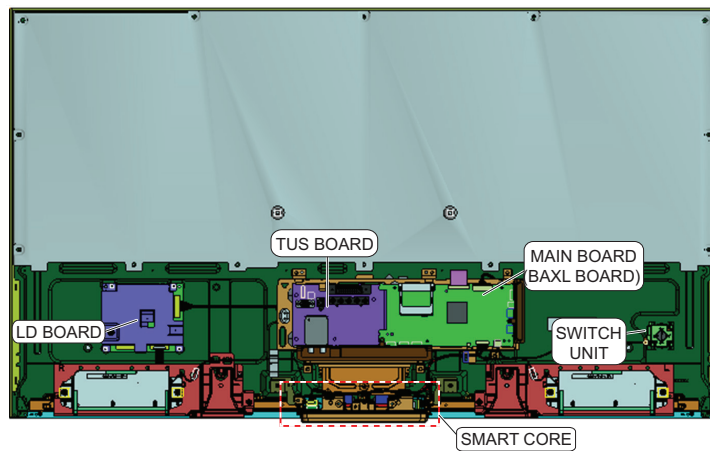
SECTION 1 - SPECIFICATIONS AND LAYOUTS

BOARD LAYOUT

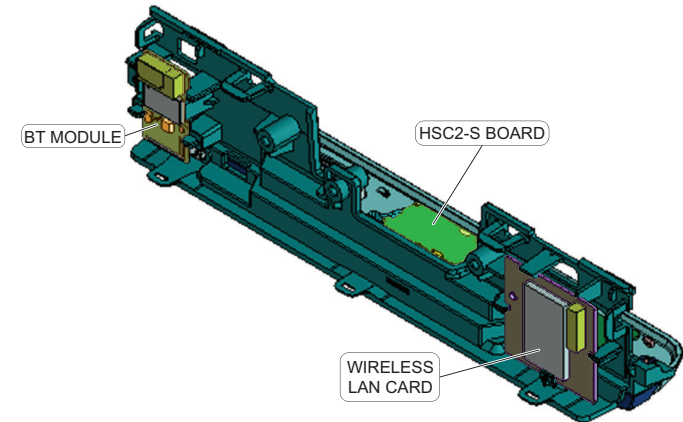
KDL-50W700B



KDL-55W700B



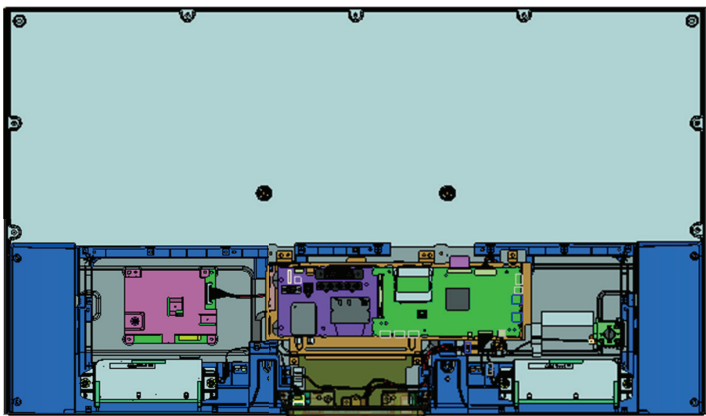
SMART CORE BLOCK



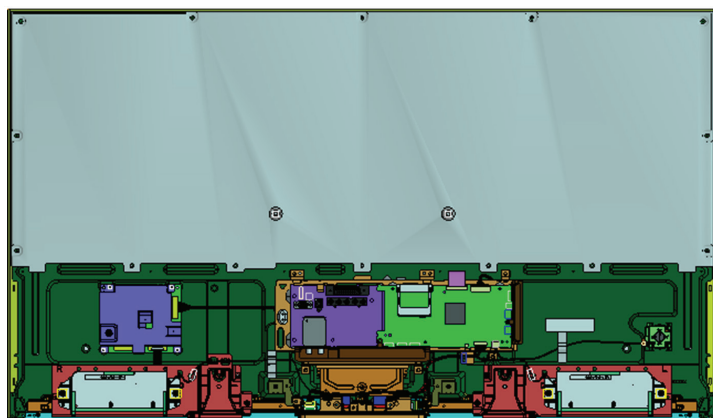
SECTION 1 - SPECIFICATIONS AND LAYOUTS

WIRE DRESSING

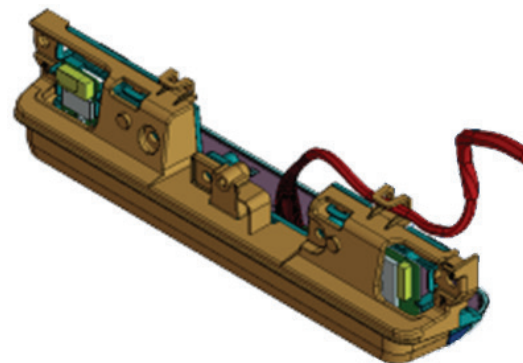
KDL-50W700B



KDL-55W700B



SMART CORE BLOCK



SECTION 2 - TROUBLESHOOTING


DIAGNOSING THE ERROR

Before servicing the Television:

1. Verify the TV has the symptom the customer indicated.
2. Check to see if the latest Software is installed.
 - a. If not, install the latest version.
3. Determine the replacement part required.

VIEWING THE SELF CHECK DIAGNOSIS HISTORY

When an error is detected, the Self Check screen records the number of times the error occurred. This is helpful in confirming past occurrences of an error and for determining if an error is intermittent when the customer is not sure what is causing the television to shut down. If the screen displays a "0", no error has occurred.

1. Press Power  to turn on the TV and then turn it off again.
2. Press the following buttons on the **Remote Commander** within 1 second of each other:

 → Channel  → Volume  → Power 

NOTE: This differs from accessing Service Adjustments Mode (Volume +).

StandBy LED Blink Count	Diagnosis Item	Date and Time Display*	Error Count (00-99)
SELF CHECK			
000	RESERVED	-----	00
000	RESERVED	-----	00
002	MAIN_POWE	-----	00
003	DC_ALERT	-----	00
003	AUD_PROT	-----	00
003	HDMI_EQ	-----	00
003	TU_DEMOD	-----	00
004	VLED	-----	00
004	LD_ERR	-----	00
005	HFR_ERR	-----	00
005	TCON_ERR	120123132522 120123113645	02
005	P_ID-ERR	-----	00
006	BACKLITE	-----	00
007	TEMP_ERR	-----	00
007	FAN_ERR	-----	00
010	EMITTER	-----	00
101	VPC_WDT	-----	00
102	MEPS_WDT	-----	00
103	HOST_WDT	-----	00
104	STBY_WDT	-----	00
00345	000333	06789	
Panel operation time by hour (MAX:65535)			
Boot count (MAX:65535)			
Total operation time by hour (MAX:65535)			

*Format of Error History = YYMMDDhhmmss example 120123132522= Jan 23, 2012 13:25:22 (1:25:22PM)
NOTE: date and time must be set for this to work

SAMPLE SELF CHECK DIAGNOSIS PAGE

SECTION 2 - TROUBLESHOOTING

TRIAGE CHART

Use this general Triage Chart to determine what may possibly be causing the error before going out to the customers location.

1. Confirm the symptom from the customer.
2. Select that symptom from the chart.
3. Bring the primary component listed for that symptom.
4. Follow the associated flowcharts in the Training Manual to isolate the board.
5. Chart Color Code.

Red Dot: (Primary) Most likely defective part.

Blue Triangle: (Secondary) Possible defective part.

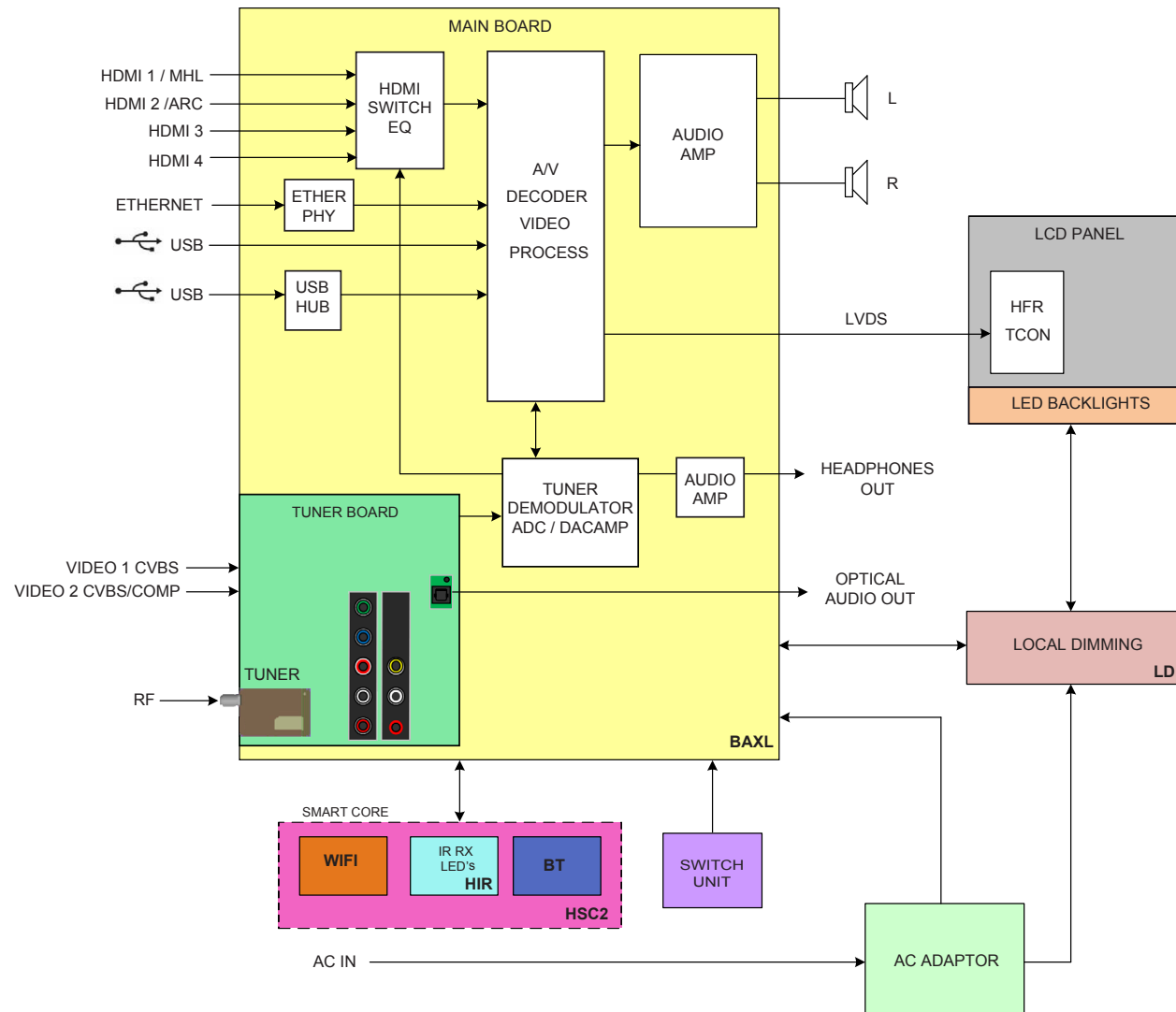
Board Reference	Symptoms - Shutdown. Power LED blinking red diagnostics sequences								No Power	Video			Remote	Network		Audio	Smart Core
	2X	3X	4X	5X	6X	7X	8X	9X	No White Power LED	Steady lines or dots	No Video One of Inputs	No Video All Inputs	No Remote	Wireless can't connect	Bluetooth can't connect	No Audio	No LED
MAIN BOARD	▲	●		▲	▲	●	●		▲	▲	●	●	▲	▲	▲	●	▲
TUNER BOARD		▲					▲	●		▲	●	●				▲	
LCD PANEL			●	●	●	▲				●		▲					
TCON			▲	●	▲					▲		▲					
HIR BOARD				▲									●				
HSC2 BOARD													▲				●
LD BOARD			●									▲					
BT BOARD															●		
WIFI							●							●			
Problem	POWER	AUDIO/POWER	LD	TCON	BACK-LIGHT	TEMP	SOFT-WARE										

***NOTE:** REFER TO LCD PANELS SERVICE MANUAL IN REFERENCE LIBRARY DATABASE FOR CORRECT REPLACEMENT PARTS BASED ON SERIAL NUMBER.

SECTION 2 - TROUBLESHOOTING

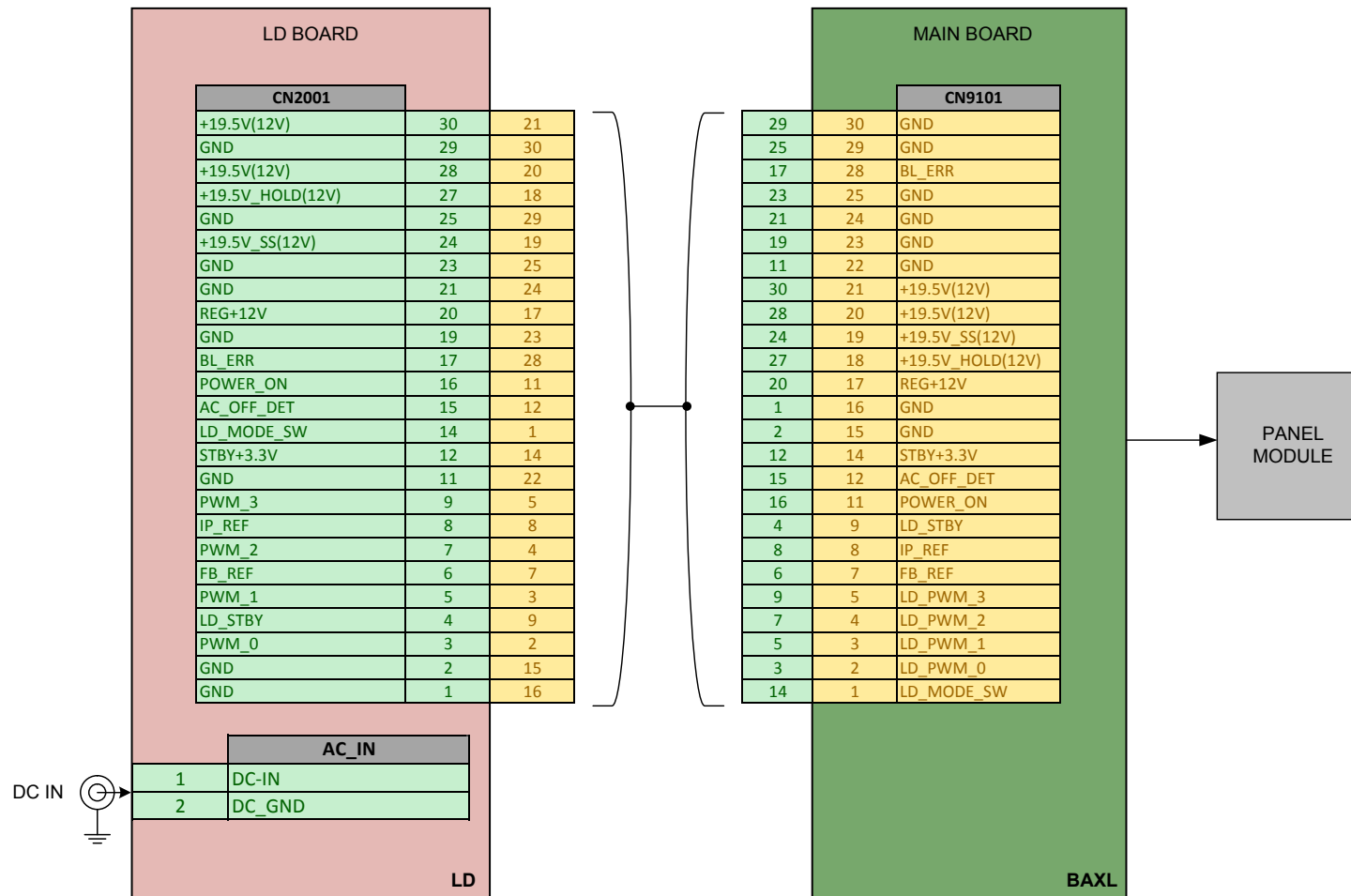
FLOWCHARTS AND DIAGRAMS

OVERALL BLOCK DIAGRAM



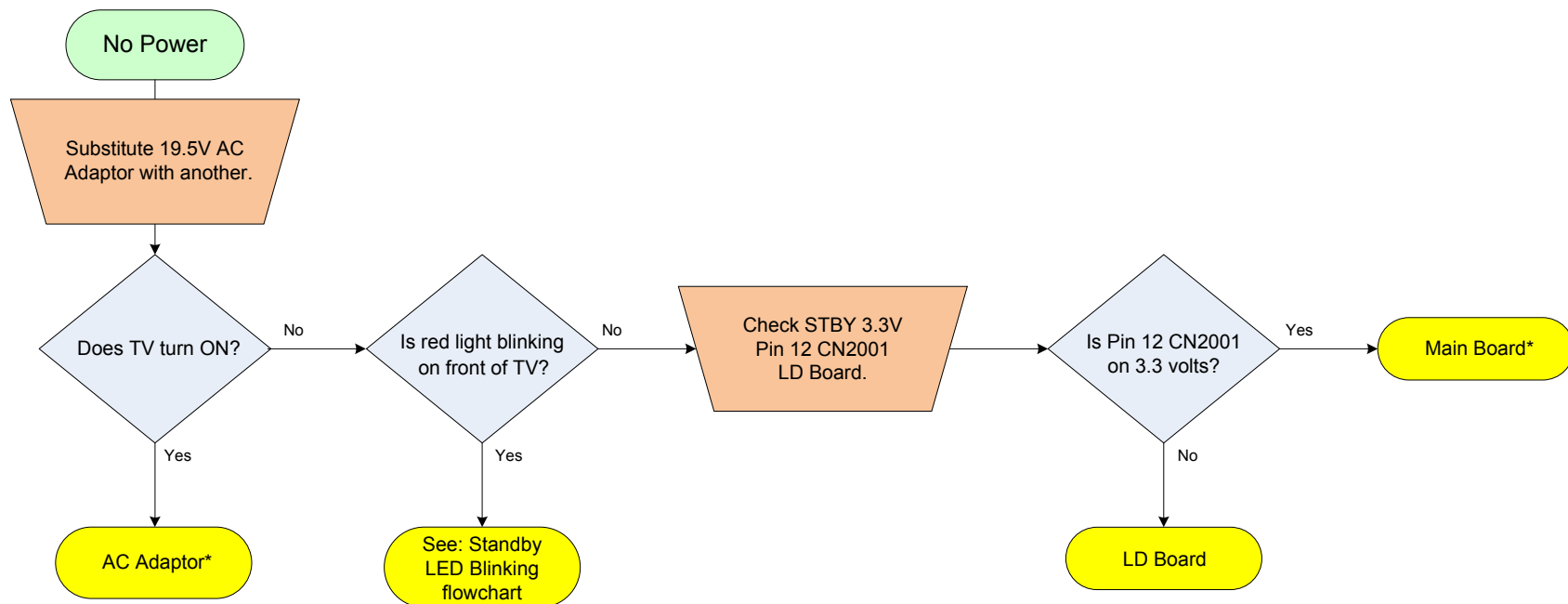
SECTION 2 - TROUBLESHOOTING

POWER AND CONTROL BLOCK DIAGRAM



SECTION 2 - TROUBLESHOOTING

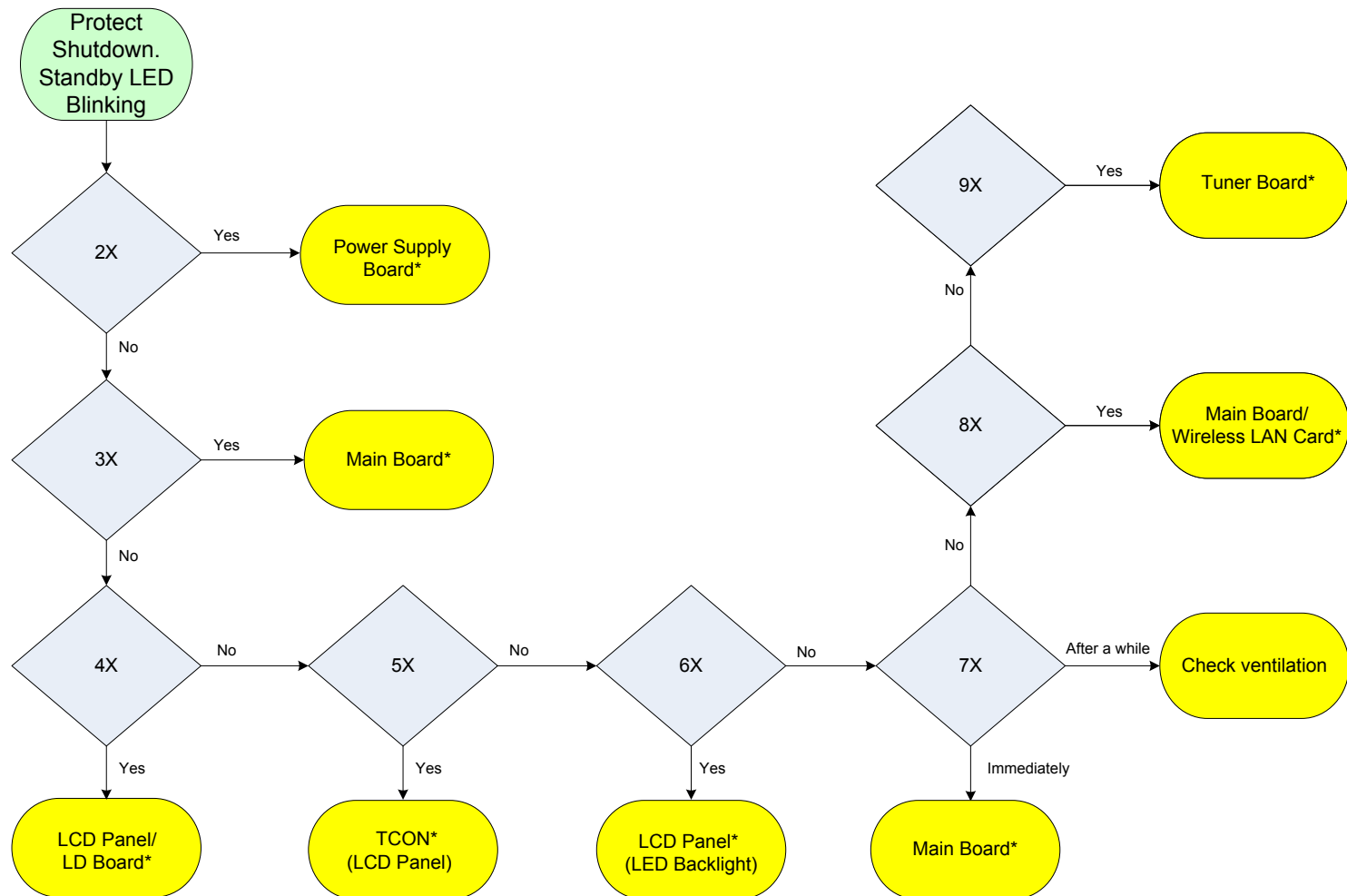
NO POWER FLOWCHART



*For Part Number information, refer to ["Section 4 - Exploded View/Part Number Information" on page 19.](#)

SECTION 2 - TROUBLESHOOTING

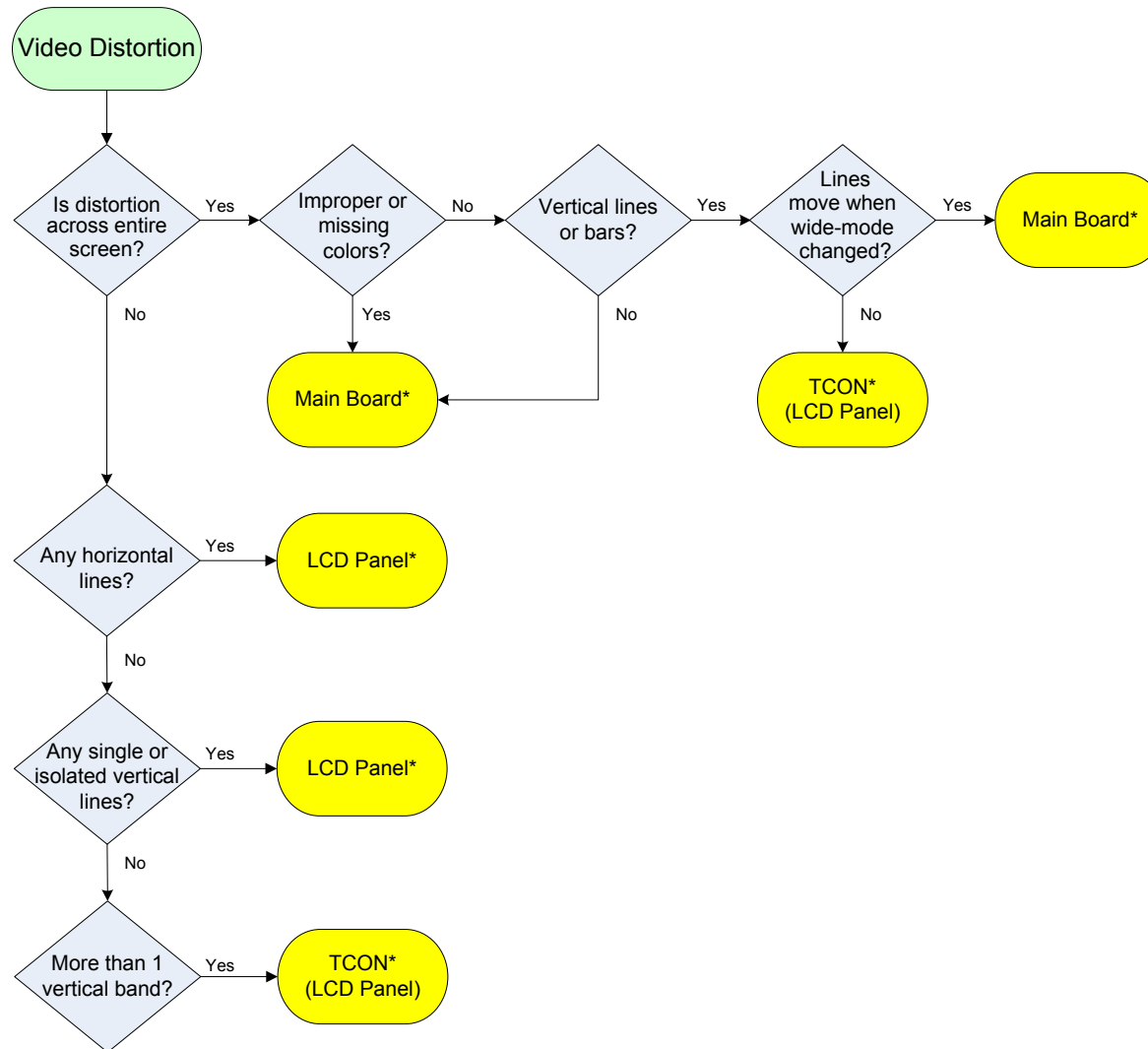
STANDBY LED BLINKING FLOWCHART



*For Part Number information, refer to ["Section 4 - Exploded View/Part Number Information" on page 19.](#)

SECTION 2 - TROUBLESHOOTING

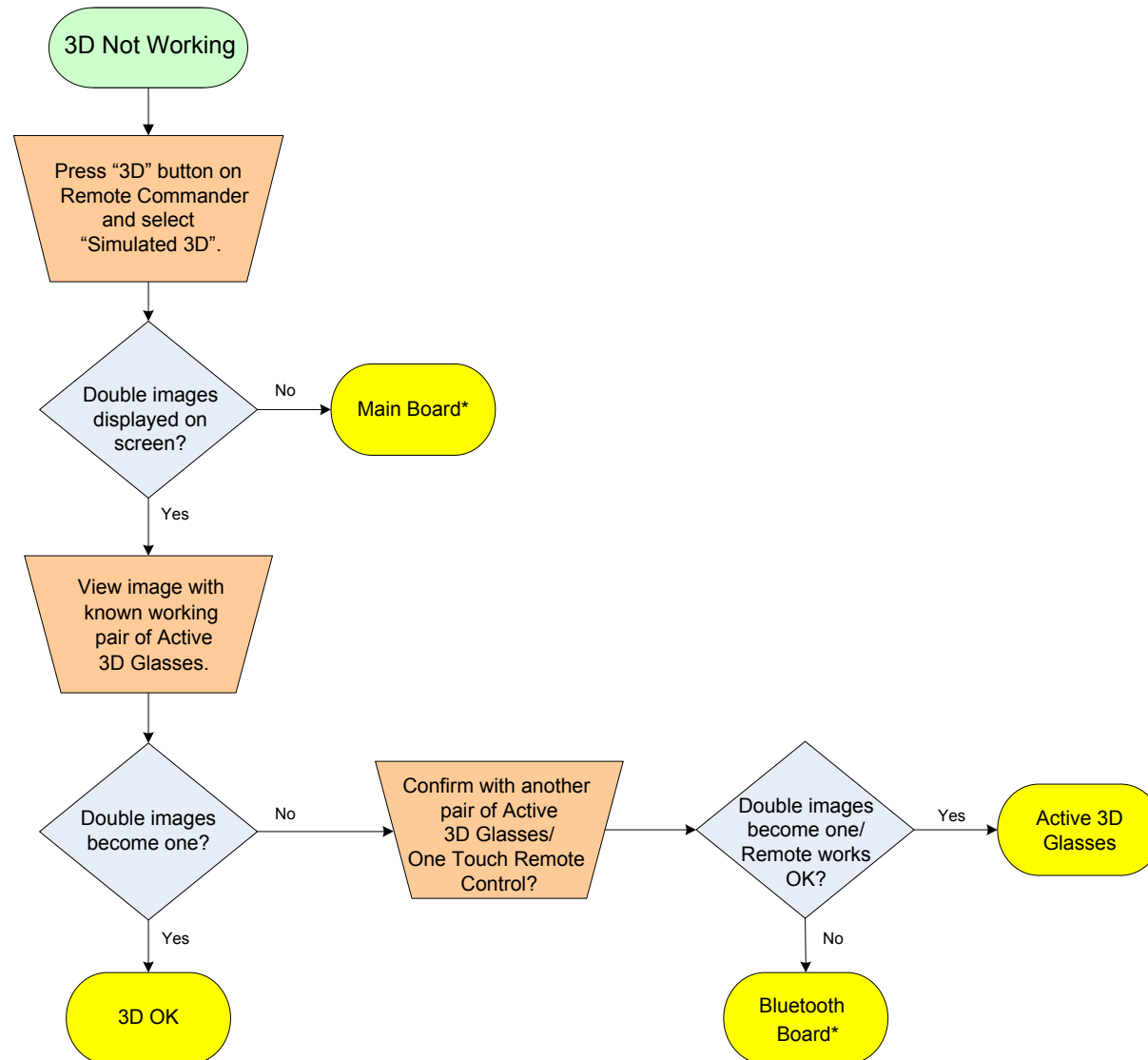
VIDEO DISTORTION FLOWCHART



*For Part Number information, refer to ["Section 4 - Exploded View/Part Number Information" on page 19](#).

SECTION 2 - TROUBLESHOOTING

NO 3D VIEWING



*For Part Number information, refer to ["Section 4 - Exploded View/Part Number Information" on page 19](#).

SECTION 3 - REPAIR INFORMATION

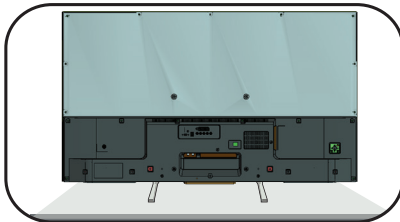
REPAIRING THE TV

If the latest Software does not correct the issue, complete the following:

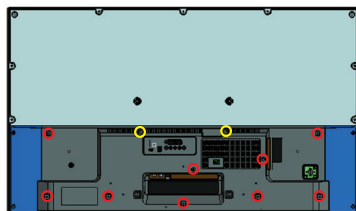
1. Verify the television has the symptom the customer indicated.
2. Replace part causing the symptom.
3. Install the latest version of Software (Required for ALL repairs).
4. Perform the required service adjustments and checks.
5. Verify the repair resolved the issue.

REMOVING THE REAR COVER

1. Place TV on a flat and steady surface in a standing position.



2. Locate and remove all screws from the Rear Cover.

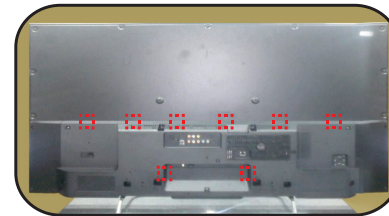


KDL-50W700B

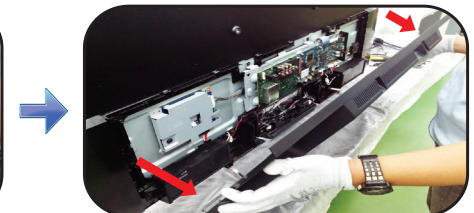


KDL-55W700B

3. Grasp and pull upwards on left and right side of Rear Cover to release all hooks.



4. After releasing the hooks, firmly lift upwards as shown to detach Rear Cover from TV.

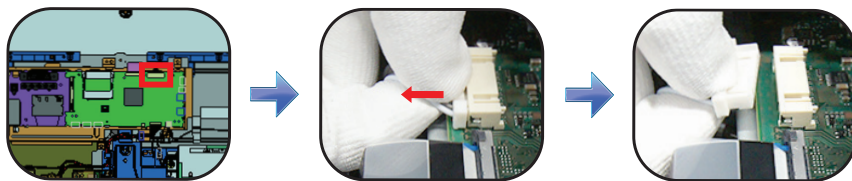


SECTION 3 - REPAIR INFORMATION

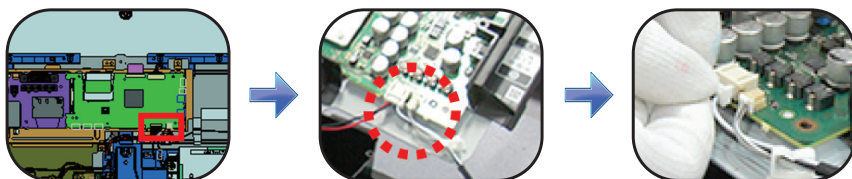
REPLACING THE MAIN BOARD / TUNER BOARD

The Main Board used in these models is available for repair. For Part Number information refer to [Section 4 - Exploded View/Part Number Information on page 19](#).

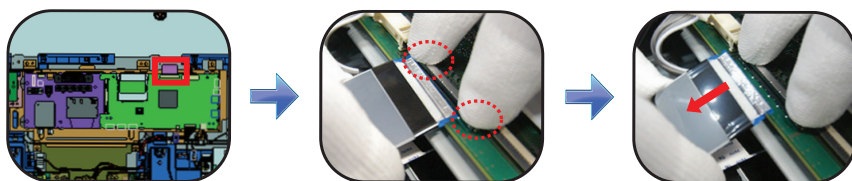
1. Disconnect Harness from the Main Board.



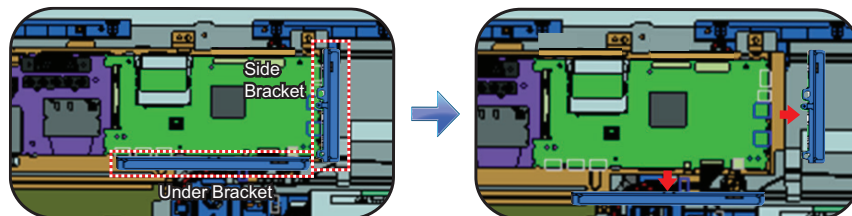
2. Locate and disconnect all remaining connectors.



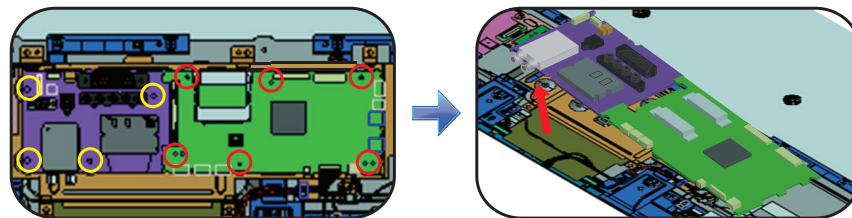
3. Press down the 2 locking clips and pull LVDS cable to release.



4. Slide brackets to detach from Main Board.

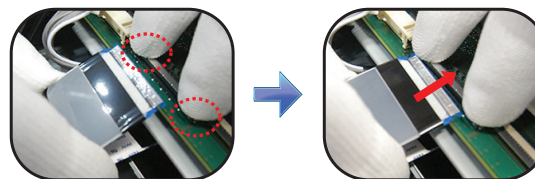


5. Locate and remove screws from the Tuner Board and Main Board, then lift to detach.



6. Install the new Main Board and/or Tuner Board and screws.

7. Reconnect the LVDS Cable and all other connectors.



8. Update the Software.

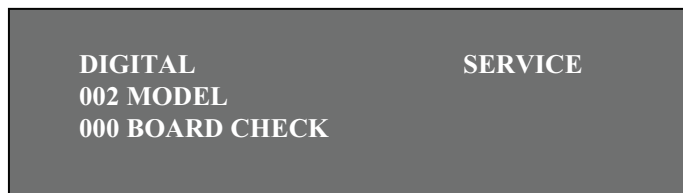
After ALL repairs **UPDATE** the **SOFTWARE** to the latest version. Instructions are included with the Software package on the [Sony Authorized Service Portal website](#).

- a. Insert the USB device with the latest Software into one of the TVs' USB ports.
 - b. Connect TV to AC power.
 - c. Wait at least 20 seconds.
 - d. Press the Power button **I/O** on the TV to turn it ON.
 - e. Wait until the Software update is completed.
9. To access **Service Mode**, turn TV ON and OFF again then press the following buttons within 1 second of each other:

DISPLAY → Channel **5** → Volume **+** → Power **I/O**

SECTION 3 - REPAIR INFORMATION

10. When the **DIGITAL** Menu appears, press **2** until **002 MODEL** category displays.



11. Press **1** until **002 DEST** item displays.



CAUTION: If the incorrect Destination Data Value is selected, it may corrupt the Software requiring a Main Board replacement.

12. Press **3** until the correct destination of the TV displays.
(Use the table below for reference).

Model Name	Destination	Data Value
KDL-50W700B	US/CND	ATSC_UC_BASE
KDL-55W700B	US/CND	ATSC_UC_BASE

13. Press **MUTE** then **0** to save the changes.



14. Press **1** until **003 MODELNAME** displays.



15. Press **3** until the model displayed matches the model of the TV.

CAUTION: The Model Name can only be selected once. Be sure to verify the information is correct before saving the changes.

16. Press **MUTE** then **0** to save the changes.



17. Locate the Serial Number for the TV on the side of the Rear Cover.

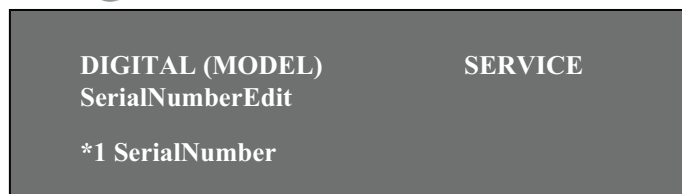


18. Press **1** until **004 SERIAL** item displays.

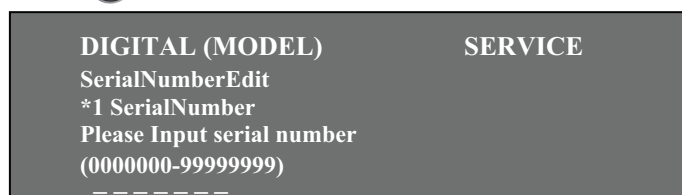


SECTION 3 - REPAIR INFORMATION

19. Press **0** to display the **Serial Number Edit** option.



20. Press **+** to display the **Serial Number** input screen.

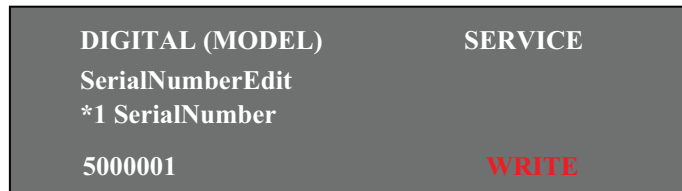


CAUTION: The Serial Number can only be selected once. Be sure to verify the information is correct before saving the changes.

21. Enter the Serial Number of the TV.

NOTE: If the incorrect Serial Number is entered, press **RETURN** to go back to the Serial Number input screen and re-enter the correct number.

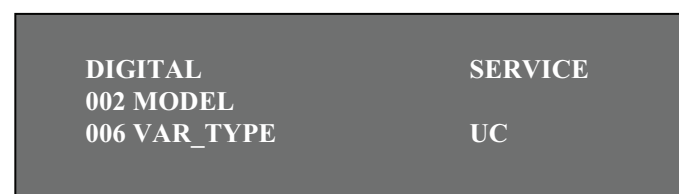
22. Press **+** to save the Serial Number.



23. Press **1** until **006 VAR_TYPE** item displays.



24. Press **3** until **UC** option displays.



25. Press **MUTE** then **0** to save the changes.



26. Cycle AC Power (Unplug and plug AC Cord from the outlet).

27. Access **Service Mode**, by pressing the following buttons within 1 second of each other:

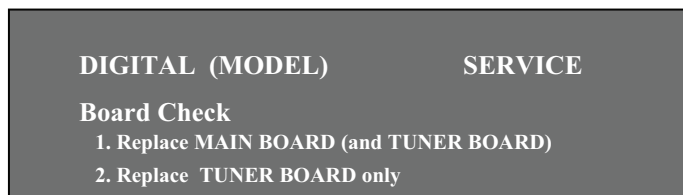


28. When the **DIGITAL** Menu appears, press **2** until **002 MODEL** category displays.



SECTION 3 - REPAIR INFORMATION

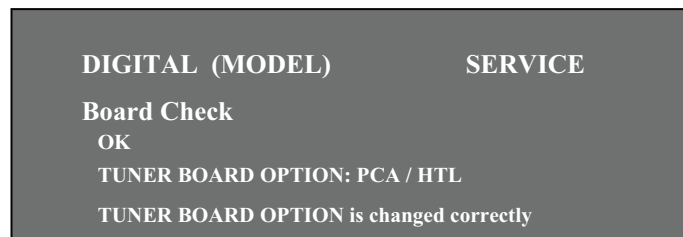
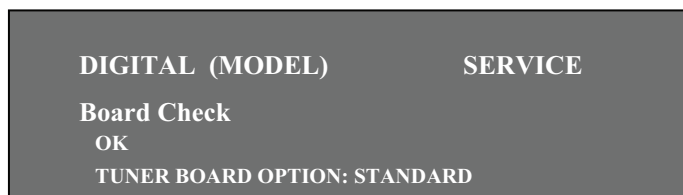
29. Press **0** to select the **000 BOARD CHECK** item.



When replacing the Main Board and/or Tuner Board:

30. Press **1** to verify the Main Board replacement results.

NOTE: Either one of the following messages indicates a correct process.

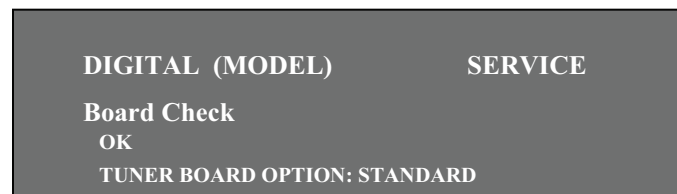


CAUTION: If the Main Board is a mismatch to the Tuner Board, a "NG: WRONG COMBINATION OF MAIN BOARD AND TUNER BOARD" will display.

31. Press **RETURN**.

When replacing the Tuner Board only:

32. Press **2** to verify the Tuner Board replacement results.



CAUTION: If the Tuner Board is a mismatch to the Main Board, a "NG: DIFFERENT KIND OF TUNER BOARD HAS BEEN CONNECTED" will display.

33. Press **RETURN**.

34. Turn the TV OFF.

35. Press **UP** on the Remote Commander and Power button **I/O** on TV to set unit to Shipping Condition.

SECTION 3 - REPAIR INFORMATION

36. Clear the **Self Check** screen.

- Press Power **I/O** to exit **Service Mode**.
- Press the following buttons on the **Remote Commander** within 1 second of each other:

DISPLAY → Channel **5** → Volume **—** → Power **I/O**

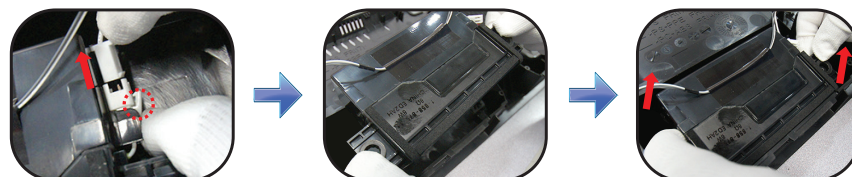
SELF CHECK		
000 RESERVED	-----	00
000 RESERVED	-----	00
002 MAIN_POWE	-----	00
003 DC_ALERT	-----	00
003 AUD_PROT	-----	00
003 HDMI_EQ	-----	00
003 TU_DEMOD	-----	00
004 VLED	-----	00
004 LD_ERR	-----	00
005 HFR_ERR	-----	00
005 TCON_ERR	120123132522 120123113645	02
005 P_ID-ERR	-----	00
006 BACKLITE	-----	00
007 TEMP_ERR	-----	00
007 FAN_ERR	-----	00
010 EMITTER	-----	00
101 VPC_WDT	-----	00
102 MEPS_WDT	-----	00
103 HOST_WDT	-----	00
104 STBY_WDT	-----	00
00345 000333 06789		

- To clear the error history and error count press **8** → **0**.
- Press Power **I/O** to exit **Self Check Mode**.

37. Cycle AC Power (Unplug and plug AC Cord from the outlet).

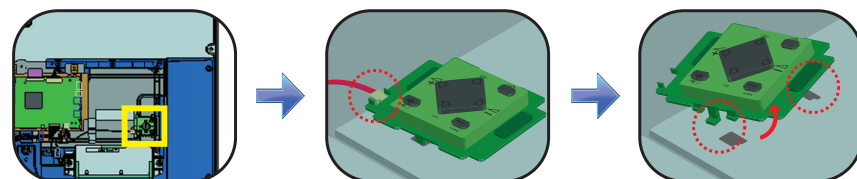
REMOVING THE SPEAKERS

- Press down the connector clip to disconnect from each Speaker, then lift to detach.



REPLACING THE SWITCH UNIT

- Disconnect connector from Switch Unit, then release clips to detach.

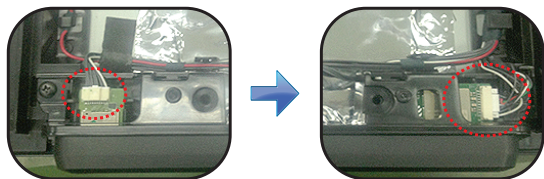


- Install the new Switch Unit and connector.

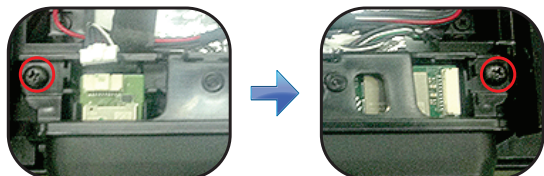
SECTION 3 - REPAIR INFORMATION

REMOVING THE SMART CORE BLOCK

1. Disconnect 2 connectors from Smart Core Block.



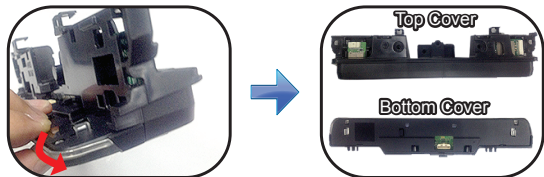
2. Locate and remove 2 screws.



3. Grasp Smart Core Block and carefully pull upwards, then disconnect Harness to detach from Panel.



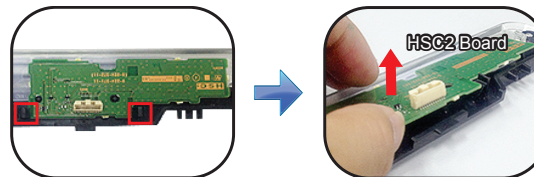
4. Pull Bottom Cover on the direction shown to detach from Top Cover.



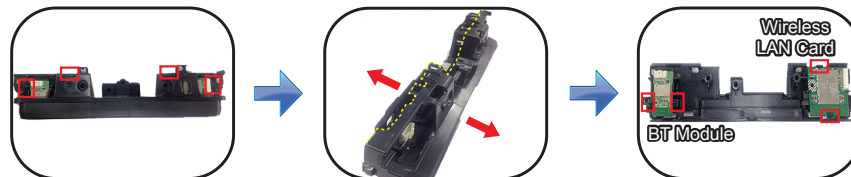
5. Release 6 hooks on the sequence shown by pulling apart the Bottom Cover to access the HSC2 Board.



6. Unclamp 2 side clips from the HSC2 Board and lift as shown to detach.



7. Release 4 hooks to remove the back cover from the front cover. Locate and unclamp the side clips to detach the BT Module and Wireless LAN Card.




SECTION 4 - EXPLODED VIEW/PART NUMBER INFORMATION

TABLE TOP STAND

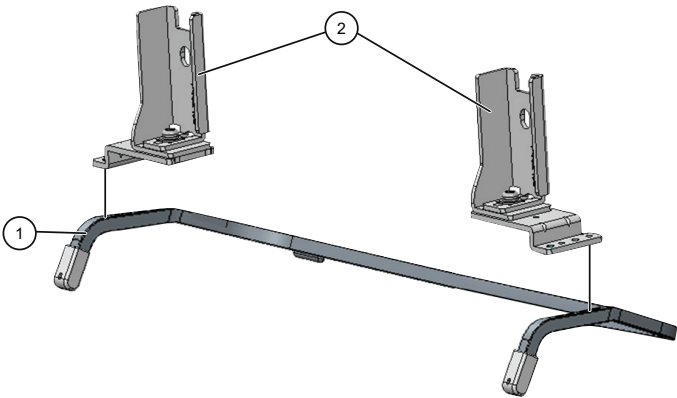
Components not identified by a part number or description are not stocked because they are seldom required for routine service.

NOTE: The components identified by shading and a  mark are critical for safety. Replace only with part number specified.

The component parts of an assembly are indicated by the reference numbers in the far right column of the parts list and within the dotted lines of the diagram.


NOTE: The components identified by a red outline and a  mark contain confidential information. Specific instructions must be adhered to whenever these components are repaired and/or replaced. (See Appendix A)


REF. NO.	PART NO.	DESCRIPTION	
1	4-485-111-11	STAND, PIPE	(KDL-50W700B ONLY)
1	4-532-540-11	STAND, PIPE	(KDL-55W700B ONLY)
2	4-462-165-02	STAND, NECK	(KDL-50W700B ONLY)
2	4-462-167-02	STAND, NECK	(KDL-55W700B ONLY)

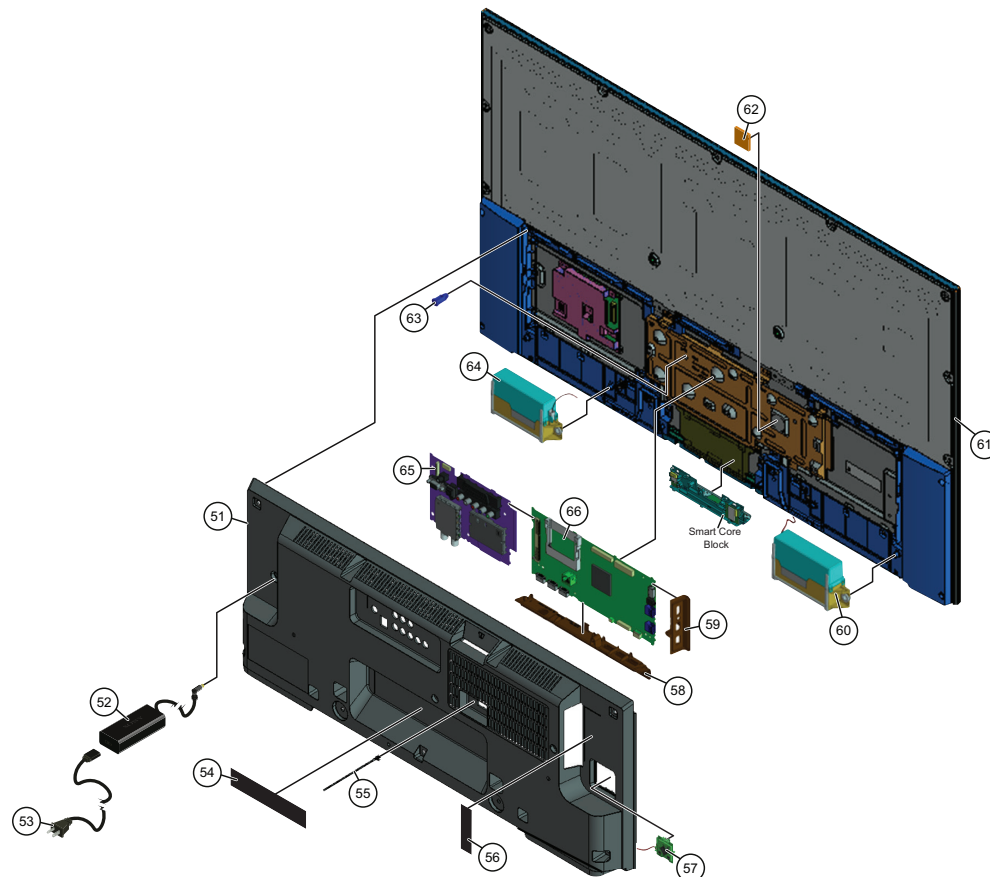






SECTION 4 - EXPLODED VIEW/PART NUMBER INFORMATION

KDL-50W700B

NOTE: The components identified by shading and  mark are critical for safety. Replace only with part number specified.


NOTE: The components identified by a red outline and a  mark contain confidential information. Specific instructions must be adhered to whenever these components are repaired and/or replaced. (See Appendix A)




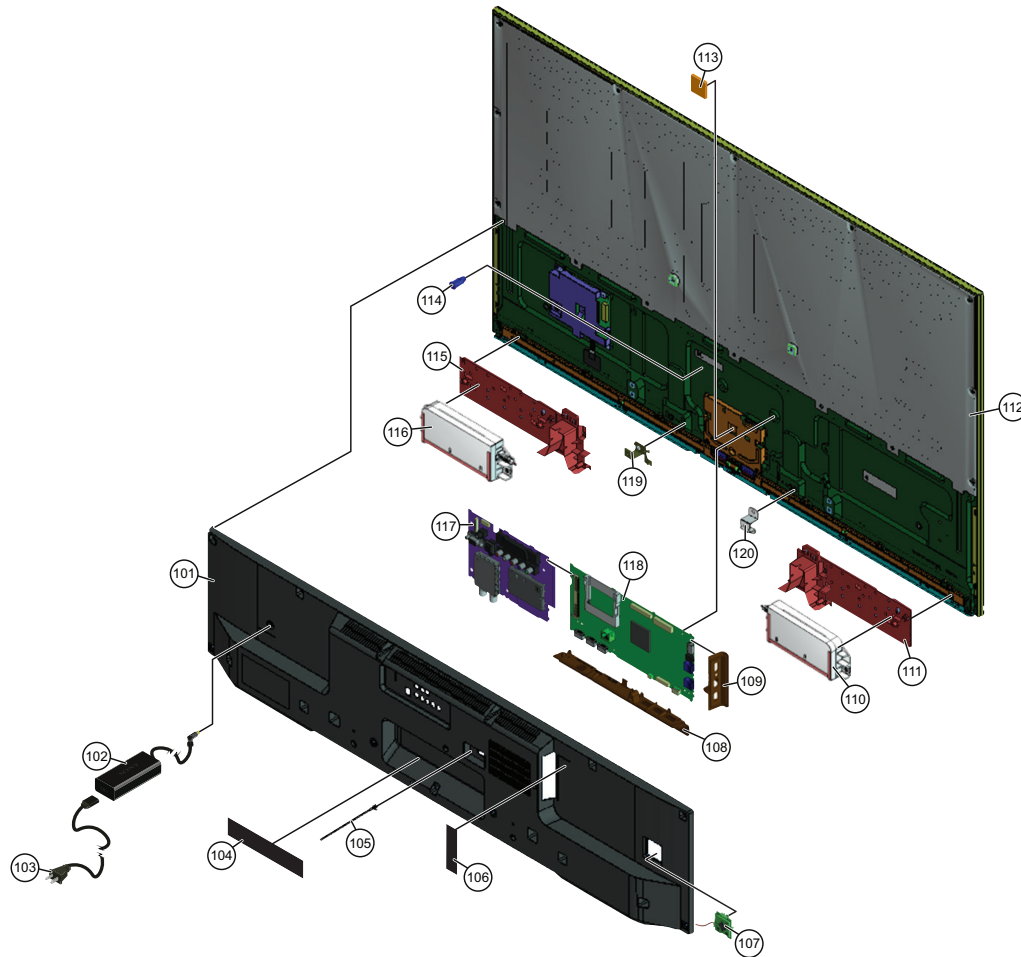
REF. NO.	PART NO.	DESCRIPTION
51	4-488-606-01	REAR COVER
 52	1-492-733-31	AC ADAPTOR (120W)
 53	1-838-955-41	POWER SUPPLY CORD
54	4-484-999-51	LABEL, UNDER TERMINAL ORDER THIS PART WHEN REPLACING THE REAR COVER.
55	4-262-708-04	CLAMPER, CABLE
56	4-484-997-01	LABEL, SIDE TERMINAL ORDER THIS PART WHEN REPLACING THE REAR COVER.
57	1-798-510-11	SWITCH UNIT
58	4-528-973-02	BRACKET, UNDER
59	4-528-972-03	BRACKET, SIDE
60	1-858-963-11	SPEAKER BOX (LEFT)
 61	N/A	LCD PANEL FOR ALL LCD PANEL AND TCON BOARD PART NUMBER INFORMATION REFER TO THE LCD PANELS SERVICE MANUAL.
62	4-440-057-01	SHEET, THERMAL (AYU2) ORDER THIS PART WHEN REPLACING THE MAIN BOARD.
63	4-256-454-02	SPACER (G A)
64	1-858-963-21	SPEAKER BOX (RIGHT)
65	A-1998-231-B	TUS BOARD, COMPLETE AFTER REPLACING THE TUNER BOARD, YOU MUST UPDATE THE SOFTWARE TO THE LATEST VERSION.
 66	A-1998-282-B	BAXL BOARD, COMPLETE AFTER REPLACING THE MAIN BOARD, YOU MUST UPDATE THE SOFTWARE TO THE LATEST VERSION.





SECTION 4 - EXPLODED VIEW/PART NUMBER INFORMATION

KDL-55W700B

NOTE: The components identified by shading and  mark are critical for safety. Replace only with part number specified.

NOTE: The components identified by a red outline and a  mark contain confidential information. Specific instructions must be adhered to whenever these components are repaired and/or replaced. (See Appendix A)




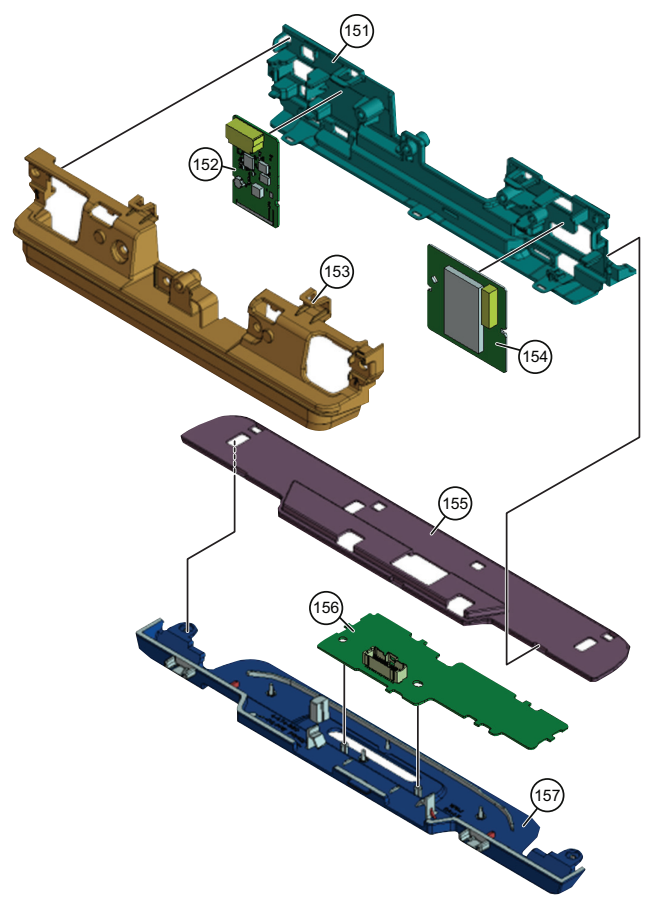
REF. NO.	PART NO.	DESCRIPTION
101	4-534-702-01	REAR COVER
 102	1-492-733-31	AC ADAPTOR (120W)
 103	1-838-955-41	POWER SUPPLY CORD
104	4-484-999-51	LABEL, UNDER TERMINAL ORDER THIS PART WHEN REPLACING THE REAR COVER.
105	4-262-708-04	CLAMPER, CABLE
106	4-484-997-01	LABEL, SIDE TERMINAL ORDER THIS PART WHEN REPLACING THE REAR COVER.
107	1-798-510-11	SWITCH UNIT
108	4-528-973-02	BRACKET, UNDER
109	4-528-972-03	BRACKET, SIDE
110	1-858-963-11	SPEAKER BOX (LEFT)
111	4-533-562-01	BRACKET, SP (LEFT)
 112	N/A	LCD PANEL FOR ALL LCD PANEL AND TCON BOARD PART NUMBER INFORMATION REFER TO THE LCD PANELS SERVICE MANUAL.
113	4-440-057-01	SHEET, THERMAL (AYU2) ORDER THIS PART WHEN REPLACING THE MAIN BOARD.
114	4-256-454-02	SPACER (G A)
115	4-533-563-01	BRACKET, SP (RIGHT)
116	1-858-963-21	SPEAKER BOX (RIGHT)
117	A-1998-231-B	TUNER BOARD, COMPLETE AFTER REPLACING THE TUNER BOARD, YOU MUST UPDATE THE SOFTWARE TO THE LATEST VERSION.
 118	A-1998-282-B	BAXL BOARD, COMPLETE AFTER REPLACING THE MAIN BOARD, YOU MUST UPDATE THE SOFTWARE TO THE LATEST VERSION.
119	4-532-398-01	VESA, BRACKET RIGHT
120	4-532-397-01	VESA, BRACKET LEFT

SECTION 4 - EXPLODED VIEW/PART NUMBER INFORMATION

SMART CORE BLOCK

NOTE: The components identified by shading and  mark are critical for safety. Replace only with part number specified.

NOTE: The components identified by a red outline and a  mark contain confidential information. Specific instructions must be adhered to whenever these components are repaired and/or replaced. (See Appendix A)




REF. NO.	PART NO.	DESCRIPTION
151	4-474-893-01	FRONT COVER
152	1-492-760-12	BT MODULE
153	4-474-894-01	BACK COVER
154	1-458-723-11	WIRELESS LAN CARD
155	4-474-892-01	TOP COVER
156	A-1969-162-A	HSC2 BOARD, MOUNTED
157	4-474-888-03	BOTTOM CASE

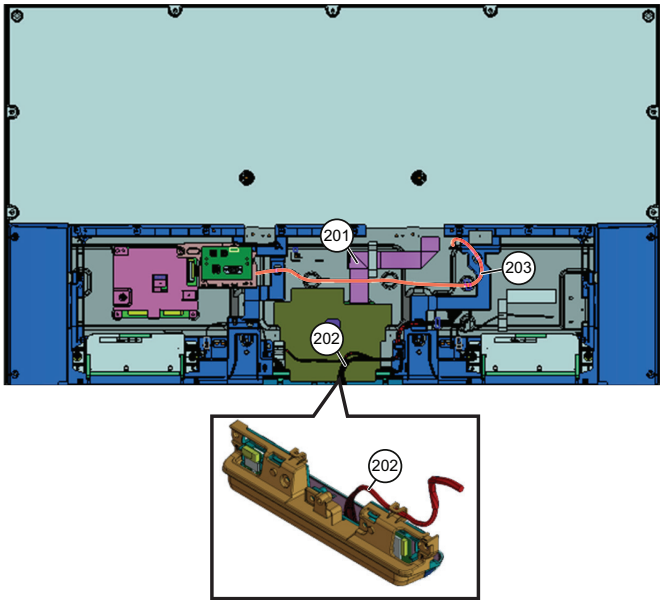
SECTION 4 - EXPLODED VIEW/PART NUMBER INFORMATION

CONNECTORS

NOTE: The components identified by shading and  mark are critical for safety. Replace only with part number specified.

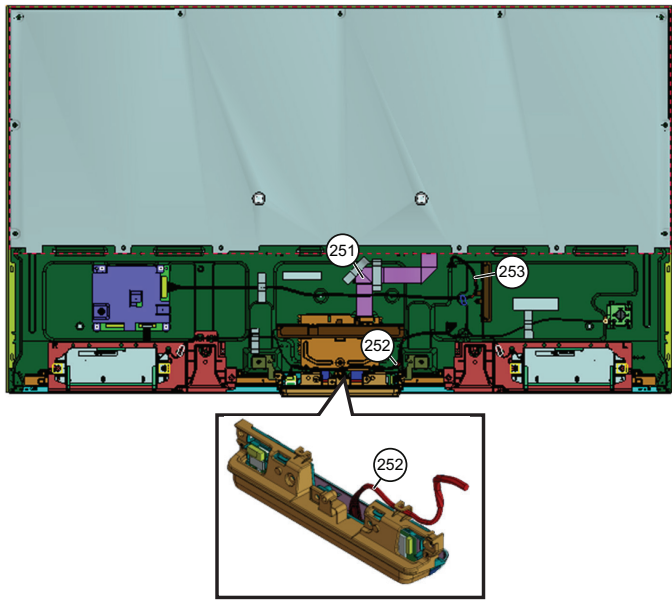
NOTE: The components identified by a red outline and a  mark contain confidential information. Specific instructions must be adhered to whenever these components are repaired and/or replaced. (See Appendix A)

KDL-50W700B



REF. NO.	PART NO.	DESCRIPTION
201	1-848-111-11	(LVDS) FFC WITH CONNECTOR 51P
202	1-910-804-06	HARNESS ASSEMBLY
203	1-910-804-02	CONNECTOR ASSEMBLY 30P


KDL-55W700B













REF. NO.	PART NO.	DESCRIPTION
251	1-848-111-11	(LVDS) FFC WITH CONNECTOR 51P
252	1-910-804-78	HARNESS ASSEMBLY
253	1-910-804-77	CONNECTOR ASSEMBLY 30P

SECTION 4 - EXPLODED VIEW/PART NUMBER INFORMATION

SCREWS

NOTE: The components identified by shading and  mark are critical for safety.
Replace only with part number specified.

NOTE: The components identified by a red outline and a  mark contain confidential information. Specific instructions must be adhered to whenever these components are repaired and/or replaced. (See Appendix A)

P/N		DESCRIPTION	KDL-50W700B	KDL-55W700B
	2-580-639-01	SCREW, +BVTP 4X12 TYPE2 IT-3	Rear Cover - Panel Bracket (6), Rear Cover - Smart Core (1), Rear Cover - Bracket Side (1), Rear Cover - Bracket Under (1), Smart Core - Panel Bracket (2)	Rear Cover - SP Bracket (6), Rear Cover - SmartCore (1), Rear Cover - Bracket Side (1), Rear Cover - Bracket Under (1)
	2-990-421-41	SCREW (+PSW) (M3X6)	Main Board (6)	Main Board (6), SP Bracket - Panel (10)
	4-256-393-11	SCREW, +PSW M3X6 W12	Tuner Board (4), Main Plate - Back Chassis (6)	Tuner Board (4), Main Plate - Back Chassis (6)
	2-580-608-01	SCREW, +PSW M5X16	Table Top Stand to TV (4)	Table Top Stand to TV (4)
	4-457-815-02	SCREW, +PSW M3X6 STEP	NA	Rear Cover - Panel (8)
	2-580-602-01	SCREW, +PSW M4X12	NA	SmartCore - Vesa Bracket (2), Vesa Bracket - Panel (2), SP Bracket - Panel (2)
	4-479-543-01	SCREW, M4X11 LOCK	Stand Neck - Stand Pipe (4)	Stand Neck - Stand Pipe (4)
	4-159-298-01	SCREW, +PSW M4X10	Rear Cover - Panel (2)	NA
	4-159-298-21	SCREW, +PSW M4X10	Wall Mount (2)	NA
NA	4-457-126-01	SCREW,+PSW M6X12	Wall Mount (2)	NA

SECTION 5 - ACCESSORIES/PART NUMBER INFORMATION

ACCESSORIES AND PACKAGING

PART NO.	DESCRIPTION
4-449-743-01	SCREW, +PSW M5X16 (SCREWS TO ATTACH TABLE TOP STAND TO LCD TV) <i>For product protection and safety reasons, Sony strongly recommends that you use the screws provided with the TV.</i> <i>CAUTION: These screws cannot be used to secure the TV to the Wall Mount Brackets.</i>
4-485-844-01	W/M VESA ADAPTER ASSEMBLY (KDL-50W700B ONLY)
4-487-766-02	WALL MOUNT BKT ASSEMBLY (KDL-50W700B ONLY)
4-534-696-01	WALL MOUNT ATTACHMENT (KDL-55W700B ONLY)
4-488-200-12	MANUAL, INSTRUCTION (KDL-50W700B ONLY)
4-536-115-11	MANUAL, INSTRUCTION (KDL-55W700B ONLY)

MISCELLANEOUS

PART NO.	DESCRIPTION
3-299-071-08	FLYER, SAFETY
2-650-770-21	SLIDE, CLAMP
3-674-673-22	STOPPER (A) (KDL-55W700B ONLY)
7-600-031-97	TAPE (3M 1350FB-1) 15MMX66M BLK
7-600-031-96	TAPE (3M 1350FW-1) 15MMX66M WHT

OPTIONAL ACCESSORIES

PART NO.	DESCRIPTION
4-414-470-01	SUPPORT BELT KIT




REMOTE COMMANDER

PART NO.	DESCRIPTION
1-492-767-11	REMOTE COMMANDER (RM-YD103)

APPENDIX A: ENCRYPTION KEY COMPONENTS

Encryption key components developed by Sony Corporation contain confidential information and shall be handled under the non-disclosure obligations provided in the applicable agreement with Sony Corporation (and/or its subsidiary).

As part of this agreement specific instructions must be adhered to whenever a Circuit Board containing encryption key components is repaired and/or replaced pursuant to the following:

1. In the service manual the Circuit Board(s) containing encryption key components shall be identified with a red outline and a .
2. Only repair boards or components listed in the service manual shall be utilized for replacement and/or repair.
3. Disassembly, decryption or reverse-engineering component(s) is strictly prohibited.
4. Any board in which the Servicer replaces an encryption key component must be placed back into the set it originally came from and the replaced defective component MUST BE DESTROYED. Boards cannot be swapped.
5. If a Circuit Board identified with a red outline and a  in the service manual is deemed to be defective:
 - a. and if a core charge is imposed and is covered under the product warranty, the defective un-repaired or modified board MUST BE RETURNED to Sony.
 - b. and if the core charge is NOT covered under the product warranty, the defective un-repaired or modified board MUST BE DESTROYED.
6. If a unit is destroyed (such as field scrap), the Circuit Board identified with a red outline and a  in the service manual MUST BE DESTROYED.

SONY® is a trademark of Sony Electronics.

Reproduction in whole or part without written permission is prohibited. All rights reserved.

Sony Corporation
Sony SSOA
TV Service Engineering
Service Publications Department

9-888-644-02

English
2014GJ74WEB-1
© 2014.07