



Philips Domestic Appliances and Personal Care

# Service Manual

## PRODUCT INFORMATION

### Features

- Color : Misty blue
- Stainless steel soleplate
- Steam output (28 grams/min)
- Shot of Steam (60 grams/min)
- Vertical Shot of Steam
- 3 steam level
- Spray feature
- Tank capacity (250 ml)
- Cord length (1.8 m)
- 360 degrees swivel
- Integrated calc-clean feature
- Integrated cord winder feature
- Filling door

### Safety Information

- This product meets the requirements regarding interference suppression on radio and TV.
- After the product has been repaired, it should function properly and has to meet the safety requirements and legal regulations as officially laid down at this moment.

## TECHNICAL INFORMATION

Voltage	: 230 - 240 V
Frequency	: 50 - 60 Hz
Power	: 1500 - 1800 W
Dimension (F-box)	: 306 (L) x 128 (W) x 157 (H) mm
Product weight	: 1.2 kg

### Water Advice

Suitable for tap water use. Advice to mix with equal portion of distilled water or use only distilled water if the tap water is very hard.

### Stainless Steel Soleplate

The stainless steel soleplate glides smoothly & very easy to clean. Stainless steel has a high scratch resistance and its durability is very competitive in the market.

### Shot of Steam

The shot of steam features a steam boost (60 grams/min) that helps to remove stubborn wrinkles easily.

### Vertical Shot of Steam

This features a steam boost in vertical position to remove wrinkles in hanging garments.

### Integrated Calc-clean

This ensures a longer life time of the iron and to allow the use of normal tap water.

**BACKPLATE 1****BALL SWIVEL 2****SWIVEL PLATFORM 20****CORDSET 3**

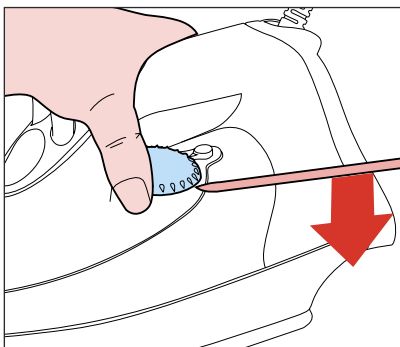
- Remove Screw A 1x
- Remove Backplate 1
- Remove Screw B 2x (cord clamp)

**OPERATION KNOB 4****DOSING UNIT 5****INLAY 6****FILLING DOOR 19****PUMP 8****NOZZLE 9**

- Remove Screw A 1x
- Remove Backplate 1
- Remove Screw B 2x (cord clamp)
- Remove Cord set 3
- Remove Dosing unit 5
- Remove Screw D 1x
- Remove Inlay 6
- Remove Operation knob 4

**DIAL 10****RATTLE SPRING 11****TANK SET 12****TANK SEAL 106****LAMP ASSEMBLY 13****LAMP HOLDER 18**

- Remove Screw A 1x
- Remove Backplate 1
- Remove Screw B 2x (cord clamp)
- Remove Cord set 3
- Remove Dosing unit 5
- Remove Screw D 1x
- Remove Inlay 6
- Remove Operation knob 4
- Remove Screw C 3x

**COVER 14****THERMOSTAT BUSH 15****SOLEPLATE 16****SEAL 102, 103**

- Remove Screw A 1x
- Remove Backplate 1
- Remove Screw B 2x (cord clamp)
- Remove Cord set 3
- Remove Dosing unit 5
- Remove Screw D 1x
- Remove Inlay 6
- Remove Operation knob 4
- Remove Screw C 3x
- Remove Tank set 12
- Remove Screw E 3x
- Remove Cover 14

**REPAIR INSTRUCTIONS**

- Due to the high voltage of the iron, ONLY the specified cordsets must be used.
- Thermostat that is fitted to the soleplate (Pos 16) was pre-adjusted by the suppliers and secured by glue. To avoid mal-function of the iron, NEVER re-adjust the thermostat.
- No information about the type number and voltage is stamped onto the typeplate. When replacing the cover (typeplate is at the bottom), engrave at least the type number & voltage on the typeplate with a sharp object.

**OPTIONAL (accessories)**

- No specific issues

Pos	Service code	Description	Consist of
1	4239 026 12420	Backplate	
2	4239 026 12430	Ball swivel	
3	4239 000 08500	Cordset - EU	
4	4239 026 12950	Operation knob - Spray (Blue)	104
	4239 026 12960	Operation knob - SOS (Blue)	105
5	4239 021 17190	Dosing unit - non extra steam	
6	4239 026 12520	Inlay	
7	4239 015 54210	Sealing - Tank top seal	101
	4239 015 55070	Sealing - Cover seal	102
	4239 015 51450	Sealing - SOS seal	103
	4239 015 54400	Sealing - Tank seal	106
8	4239 020 90560	Pump	
9	4239 025 99230	Nozzle	
10	4239 021 20910	Dial	
11	4239 026 12460	Plastic rattle spring	
12	4239 021 15610	Tank set - SOS (Blue)	
13	4239 021 03140	Lamp assembly	
14	4239 026 12860	Cover	
15	4239 026 13220	Thermostat bush	
16	4239 021 16370	Soleplate assembly - 230 V	
17	4239 026 05570	Lamp cover	
18	4239 026 12400	Lamp holder	
19	4239 021 17220	Filling door assembly (Blue)	
20	4239 025 92220	Swivel platform	

