

Service
Service
Service



Philips Domestic Appliances and Personal Care

Service Manual

PRODUCT INFORMATION

| | |
|---------------------|-------------------------|
| Dimensions | : 210 x 100 x 80 mm |
| Weight | : 1.6 kg |
| Voltage & frequency | : 220 - 240V, 50 - 60Hz |
| Power consumption | : 50W |
| Colours | : Ivory & aubergine |
| Grinding stones | : Sapphrite |

SERVICE INFORMATION

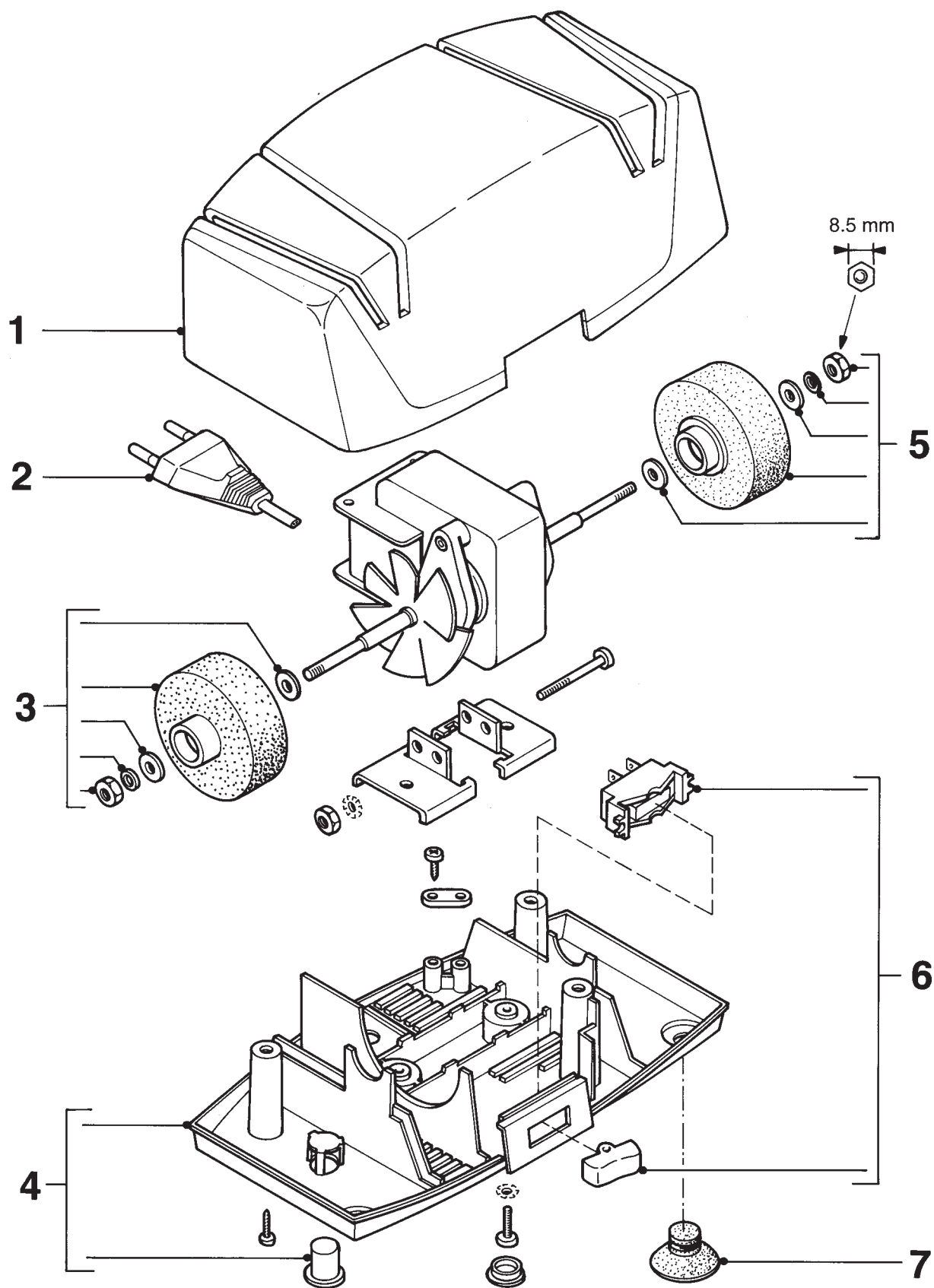
- Item 3 = coarse grinding stone is provided with a right-hand thread nut.
- Item 5 = fine grinding stone is provided with a left-hand thread nut.

MSH coding 8832 577 00000

Suitable for all straight knives and serrated table knives.

Not suitable for scissors, coarsely serrated blades as breadknives and the blades of an electric knife.





| | | | | | |
|---|----------------|-------------------------|---|----------------|-----------------------|
| 1 | 4822 441 12054 | Top housing ass'y | 5 | 4822 310 11064 | R.H. wheel set (fine) |
| 2 | 4822 321 10364 | Power cord | 6 | 4822 277 11735 | Switch |
| 3 | 4822 310 11063 | L.H. wheel set (coarse) | 7 | 4822 462 10985 | Feet |
| 4 | 4822 464 10354 | Base ass'y | | | |