



Philips Domestic Appliances and Personal Care

# Service Manual

## PRODUCT INFORMATION

### Features :

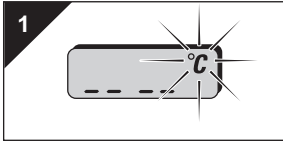
Memory	Last measured temperature appears on the display after pressing the on/off button for at least 2 seconds.
Measurement -ready-signal	The buzzer sounds 3 times and the °C symbol stops blinking.
Waterproof	The thermometer may be immersed in disinfectant containing water for maximally one hour. The water temperature must be lower than 60 °C.
Battery low indication	On display
Automatic switch - off	After 30 minutes

**The thermometer meets the Medical Device Directive 93/42/EEC for medical appliances**

### Technical Data

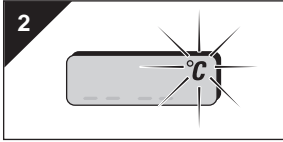
Power consumption	Less than 60 micro-Watts, which means more than 3000 measurements with one battery.
Service	For this thermometer <b>no spare parts</b> will be available in the after sales period. When the product is defective, it has to be replaced.
Display	LCD display with 4.8 mm character height
Measuring range	32.00 °C - 42.00 °C
Measuring time	Approximately 60 seconds
Measuring system	Peak hold system
Measurement ready	Measurement is ready when the temperature does not change during 20 seconds.
Accuracy	0.1 °C between 35.5 °C and 42.0 °C 0.2 °C between 32.0 °C and 35.5 °C
Battery	Button-cell 1.5 V type LR41
Materials	Sensor-tip: Stainless steel Housing parts and protective box:ABS
Display informations	p.t.o.
Replacing the battery	p.t.o.
Cleaning instructions	p.t.o.

## DISPLAY INFORMATIONS

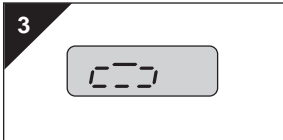


### Error message after “ measurement complete signal .“

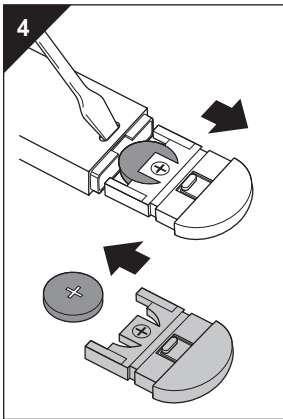
Blinking dashes and °C symbol, indicating the temperature measured is lower than 32 °C



Blinking °C symbol  
the temperature measured is higher than 42 °C



The battery must be replaced



### Replacing battery

When the symbol shown in fig. 3 appears on the display, the battery (type LR41) must be replaced (see fig. 4).

Hand in the empty battery at a chemical waste collection point.



### Cleaning

Clean the thermometer with water that is not hotter than 60 °C or with medicinal alcohol.

For hospitals : Immerse in water containing the prescribed disinfectant (fig. 5) for 1 hour at the most.