

Service  
Service  
Service



Philips Domestic Appliances and Personal Care

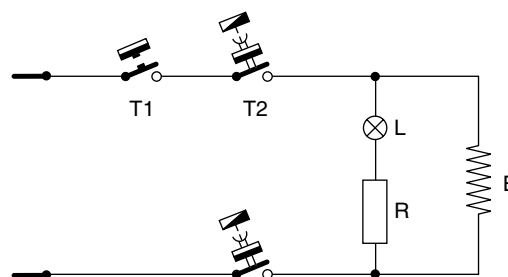
# Service Manual

## PRODUCT INFORMATION

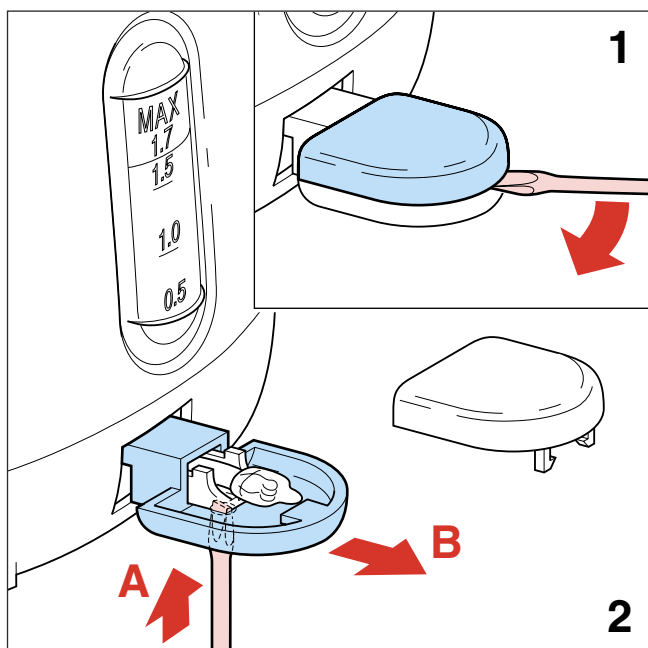
- This product meets the requirements regarding interference suppression on radio and TV.
- After the product has been repaired, it should function properly and has to meet the safety requirements as officially laid down at this moment.

## TECHNICAL INFORMATION

- Voltage : 220 - 240 V
- Frequency : 50 - 60 Hz
- Power consumption : 3,1 kW
- Coloursetting : stainless steel / black
- Contents : 1700 cc
- Version : cordless
- Steam switch : 72 - 96 °C nominal (T1)
- Automatic cut-off : 120 - 125 °C nominal (T2)
- SAP coding : HD4603/20



## ASSEMBLY & DISASSEMBLY ADVICE



1. First remove switch upper part (item 13) with a screwdriver.
2. Push with a small screwdriver through the hole and pull to the right side to get switch lower part (item 14) off.

## REPAIR INSTRUCTIONS

### Descaling

Regular descaling will prolong the life of the appliance.

1. Fill the kettle with water up to three-quarters of the MAX capacity and bring the water to the boil.
2. After the appliance has switched off, add white vinegar (8%) to the MAX level.
3. Leave the solution in the kettle overnight.
4. Empty the kettle and rinse the inside thoroughly.
5. Fill the kettle with clean water and boil the water.
6. Empty the kettle and rinse it with clean water again.

Repeat this procedure if there is still some scale in the kettle.

### OPTIONAL (accessories)

- No specific issues

## PARTS LIST

Pos	Service code	Description	
1	9965 000 15360	Filter	HD4978
2	9965 000 21050	Element cover	Black
3	9965 000 21069	Handle lid knob	Black
4	9965 000 15363	Metal lid	
5	9965 000 15364	Glass window	
6	9965 000 15365	Window seal	
7	9965 000 21070	Window bracket	Black
8	9965 000 15367	Grommet	
9	9965 000 15368	Steam guide	
10	9965 000 15369	Switch lever	
11	9965 000 15393	Lamp with wires 220 - 240 V	
12	9965 000 15370	Control unit X4+Z5	
13	9965 000 15372	Switch upper	
14	9965 000 21071	Switch lower	Black
15	9965 000 21072	Base upper	Black
16	9965 000 15375	Rubber feet	
17	9965 000 15377	Contact unit CS4	
18*	9965 000 15378	Base lower	

\* not available in the original colour

