



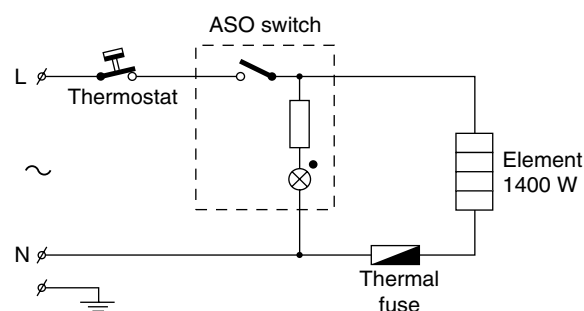
Philips Domestic Appliances and Personal Care

Service Manual

SAP coding HD7634/71

PRODUCT INFORMATION

Voltage	: 100 V, 120 V, 220 - 240 V
Frequency	: 50 - 60 Hz
Power consumption	: 1400 W
Coloursetting	: Metal gloss / Ceramic white
Contents	: 1200 cc



Colour code identification:

To determine which service manual is suitable for the appliance that has to be repaired please check the following. Look at the type plate identification from the appliance on the second row.

The first sledge number is the colour code for that appliance. (/99)

(for example below the colour code is /01)

Example of a type plate:

TYPE HD7624

/01 /A

...
...

At the service manual heading, the type and colour code are also mentioned for example **HD7624/01**

/01 is the colour code.

Descaling:

Regular de-scaling will prolong the life of your appliance and will guarantee optimal brewing results.

Follow below steps to de-scale the appliance.

1. Fill the water tank with white vinegar.
2. Let the appliance complete two runs.
3. Let the appliance complete two more flushing cycles with clean water to rinse away all vinegar.

If the above procedure does not restore the function, then switch off the coffee maker when the acid passed through during appr. 3 min.

Keep the appliance in this condition overnight and continue the steps see above procedure.

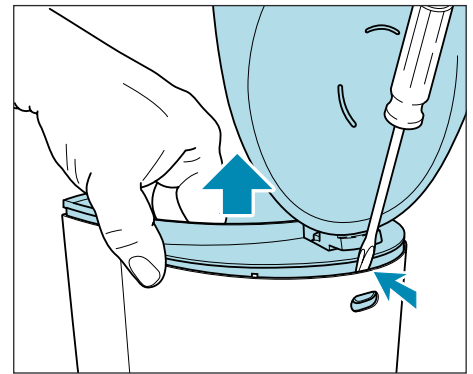
This product meets the requirements regarding interference suppression on radio and TV.

After the product has been repaired, it should function properly and has to meet the safety requirements as officially laid down at this moment.

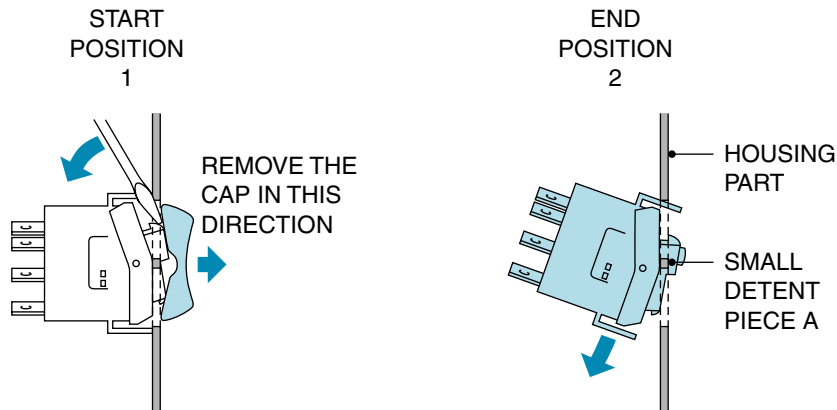
Repair instruction for replacing switch:

If the switch has to be replaced please follow the next steps:

- Remove bottom base plate.
- Pull the complete pump unit (including hose pieces) downwards until the hose pieces are loosened from the two water tank pipes. (hose pieces and wires must stay connected to the pump).
- Remove the complete top cover including the water tank. (see picture 1)
- Now it is possible to replace the switch.
- To replace the switch, first remove the switch cap from the switch by means of a small screwdriver. (The cap has to be loosened at the inner side of the housing by bending a little bit the plastic paw from the switch cap)



picture 1



- Place the new switch in and connect the wires, push the plastic switch cap back on the switch.
- Insert the complete top cover assembly including plastic tank gently back into the housing.
- Take the pump unit and attach the hose pieces to the water tank pipes of the previously inserted tank. (be sure that the hose pieces are well attached to the water tank pipes, otherwise leakage problems can occur)
- Assemble the base plate again.

Notes for replacing pump assembly:

Ordering/replacing Low voltage Pump assembly:

Because of standardisation of the range of spare parts Pumps position number 25.

The following has to be done before the ordered LV pump can be built in the appliance.

The white wire from the pump that is connected to the element and Thermostat can be removed.

When the wire is removed the new pump can be connected as the predecessor.

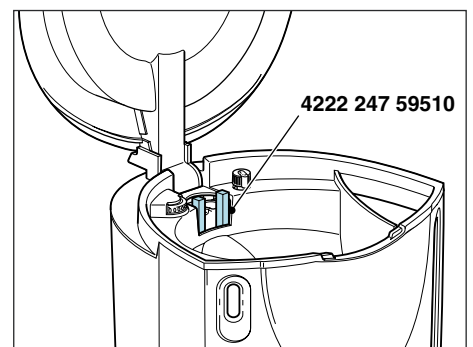
Safety warning connecting phase (L) brown wire to the pump:

Please be careful and always lead the Phase (L) brown wire through the pipe, see position number 28 before connecting it to the pump element!

Transportation lock:

To prevent damaging the dosing/weighting system in case the appliance has to be shipped/transported, it is possible to order a special transportation lock. For the position of the transportation lock see picture 2.

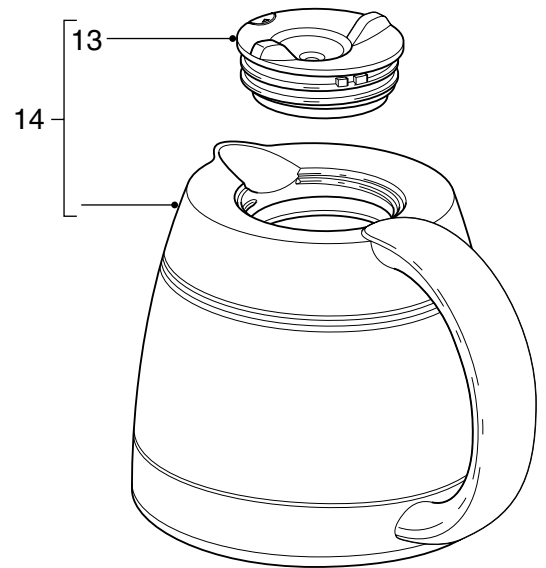
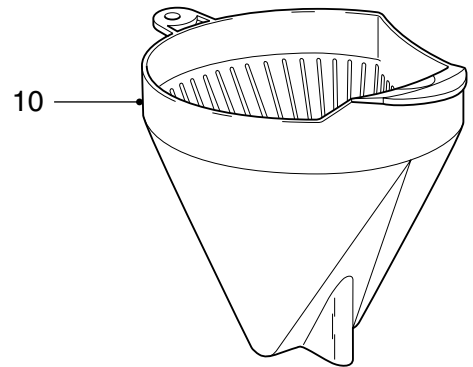
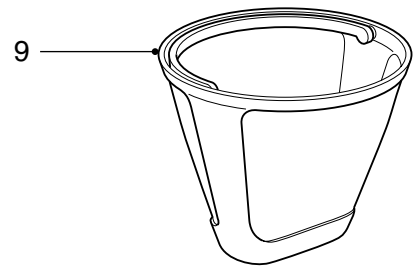
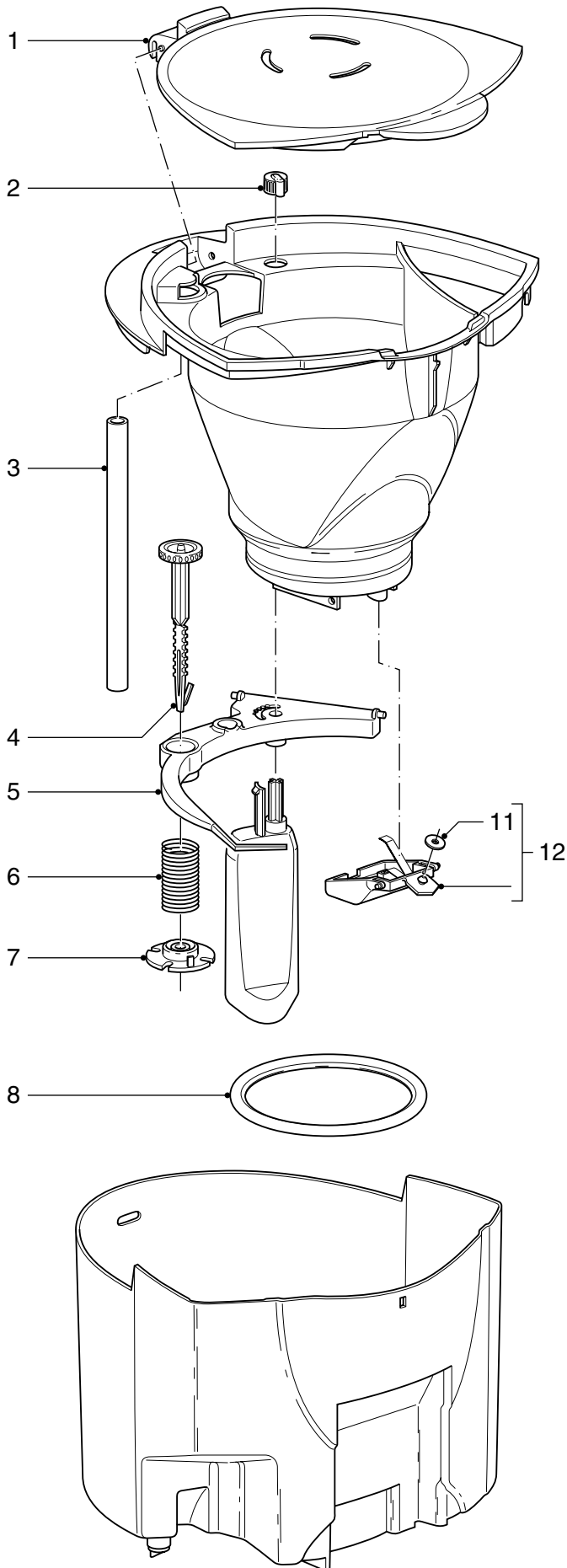
The code number transportation lock: 4222 247 59510



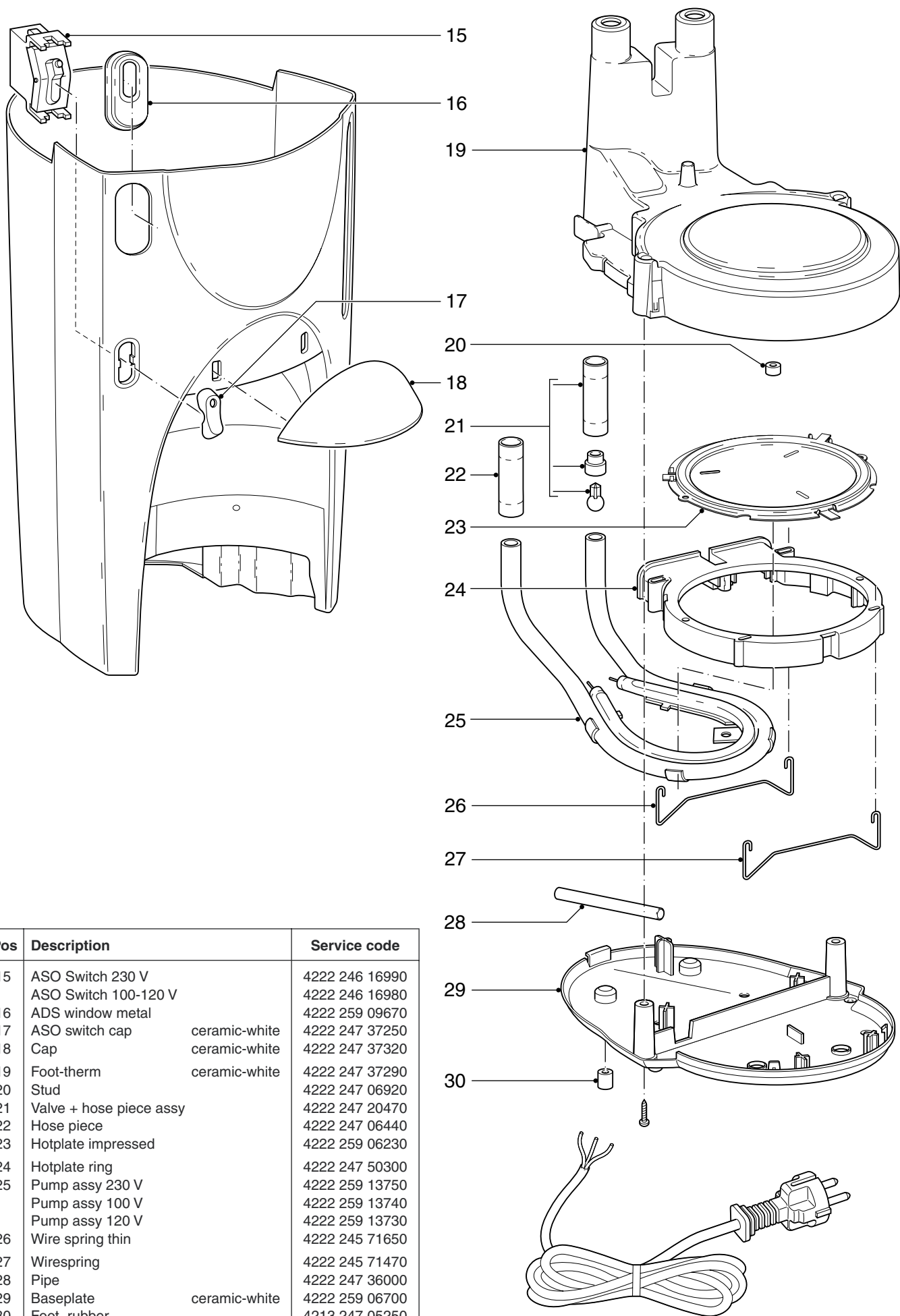
picture 2

Commercial trade number thermos jug + juglid: HD7973/71
(Metal gloss / Ceramic white)

HD7634/71



Pos	Description		Service code
1	Tank lid assy	ceramic-white	4222 259 06730
2	Strenght select button		4222 247 36500
3	Spoutpipe		4222 247 35580
4	Tare-adjuster		4222 247 35620
5	Frame ADS printed		4222 259 02330
6	ADS spring		4222 240 06350
7	Spring support		4222 247 35660
8	Sealing ring tank		4222 247 06880
9	Permanent filter		4222 247 36680
10	Filterholder		4222 247 35700
11	Dripstop ring		4222 247 06630
12	Dripstop assy		4222 259 05070
13	Thermos juglid	ceramic-white	4222 259 10080
14	Thermos jug + lid		8827 973 71010



Pos	Description	Service code
15	ASO Switch 230 V	4222 246 16990
	ASO Switch 100-120 V	4222 246 16980
16	ADS window metal	4222 259 09670
17	ASO switch cap	4222 247 37250
18	Cap	4222 247 37320
19	Foot-therm	4222 247 37290
20	Stud	4222 247 06920
21	Valve + hose piece assy	4222 247 20470
22	Hose piece	4222 247 06440
23	Hotplate impressed	4222 259 06230
24	Hotplate ring	4222 247 50300
25	Pump assy 230 V	4222 259 13750
	Pump assy 100 V	4222 259 13740
	Pump assy 120 V	4222 259 13730
26	Wire spring thin	4222 245 71650
27	Wirespring	4222 245 71470
28	Pipe	4222 247 36000
29	Baseplate	4222 259 06700
30	Foot, rubber	4213 247 05250