

Service  
Service  
Service



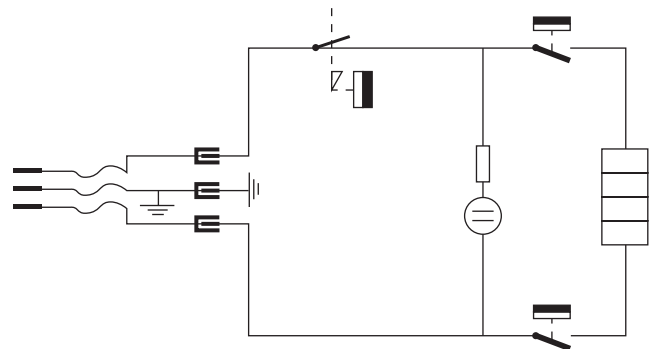
Philips Domestic Appliances and Personal Care

# Service Manual

SAP coding HD 4673/26

## PRODUCT INFORMATION

Voltage	: 220 - 240 V
Frequency	: 50 - 60 Hz
Power consumption	: 3100 W
Coloursetting	: Charcole grey
Contents	: 100 - 1600 cc



## DESCALING

Regular descaling will prolong the life of the appliance.  
When you descale the kettle, you can also descale the filter at the same time by simply leaving it in the appliance.

1. Fill the kettle with water up to three-quarters of the MAX capacity and bring the water to the boil.
2. After the appliance has switched off, add white vinegar (8%) to the MAX level.
3. Leave the solution in the kettle overnight.
4. Empty the kettle and rinse the inside thoroughly.
5. Fill the kettle with clean water and boil the water.
6. Empty the kettle and rinse it with clean water again.

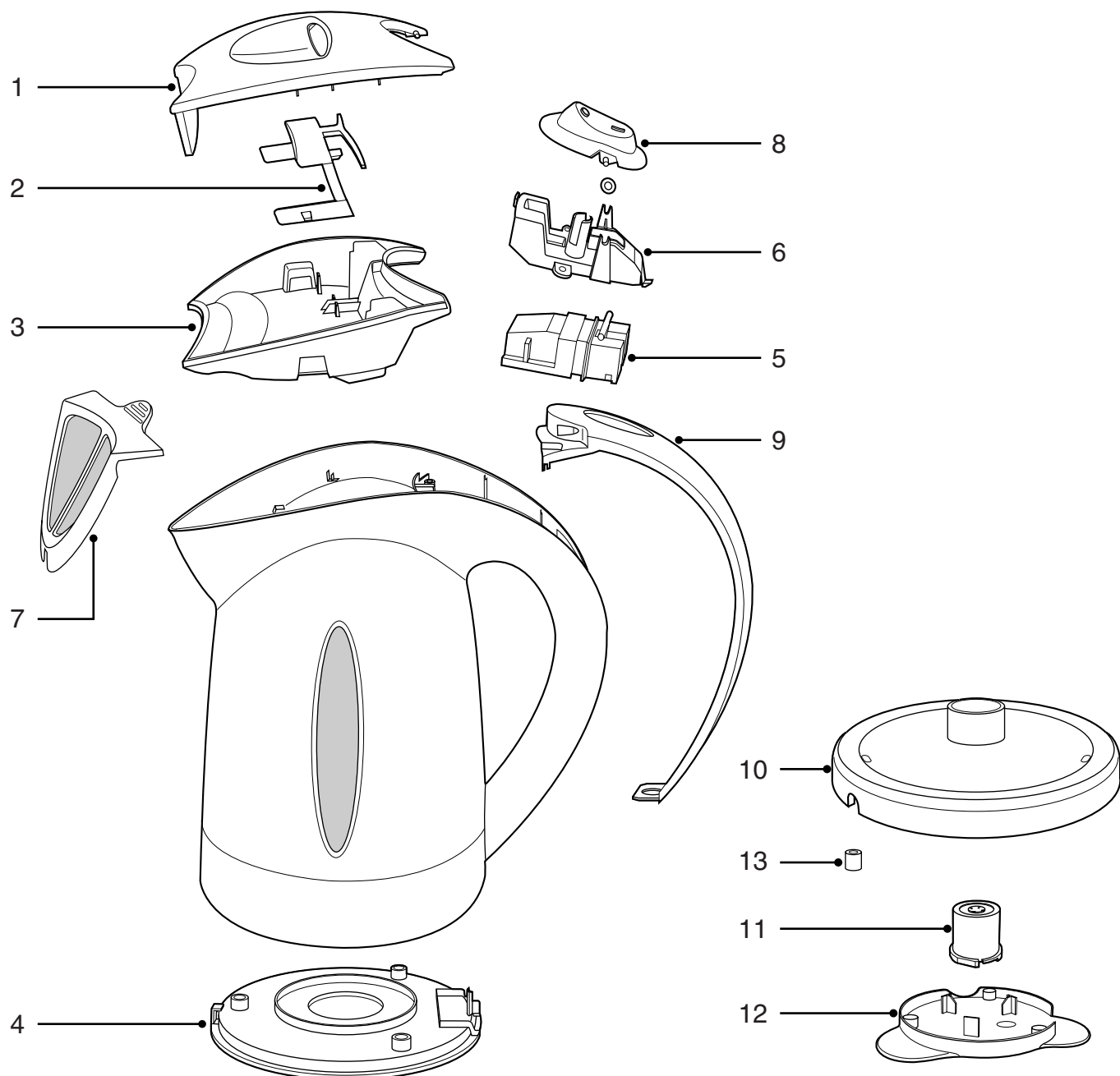
Repeat this procedure if there is still some scale in the kettle.

**This product meets the requirements regarding interference suppression on radio and TV.**

**After the product has been repaired, it should function properly and has to meet the safety requirements as officially laid down at this moment.**



# HD 4673/26



Pos.	Description	Service code
1	Lid upper	charcole grey
2	Lid latch	pearl blue
3*	Lid lower	ivory
4*	Element cover	ivory
5	Control Z5	
6	Steam guide	
7	Filter	white
8*	Switch actuator	pearl blue
9	Handle cover	charcole grey
10*	Base upper	zinc brown
11	Connector socket	
12	Base lower	naturel
13	Foot	

\* these parts are not available in the right color