

Service Service Service



Philips Domestic Appliances and Personal Care



Service Manual

PRODUCT INFORMATION

Voltage : 230V
Frequency : 50 - 60Hz
Power consumption : 1200W
Contents jug : 1200 cc
Coloursetting : Black

MSH coding
8827 611 00000

SERVICE INFORMATION

Thermostat switch-off temp : 160°C (T1)
Thermostat switch-off temp : 140°C (T2)
Thermal fuse cut-off temp : 227°C

REPAIR INSTRUCTIONS

1. Electrical circuit

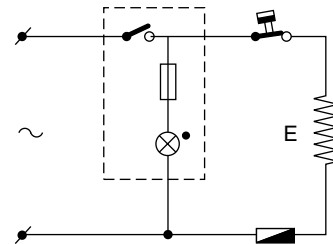
When the appliance does not work, check the electrical circuit. If the thermal fuse or thermostat prove defective, the complete pump unit has to be replaced.

2. De-scaling

If the water system is nearly or less clogged by scale then operate the coffeemaker a few times with vinegar or with a 10-15% solution of either vinegar-acid, citric acid or tartar-acid, into cold tap water.

Do not use other de-scaling agents as these may harm the appliance.

If this procedure does not restore the function, then switch off the coffeemaker when the acid has passed through during appr. 3 min. Keep the appliance in this condition overnight and continue/repeat the cleaning operation. After the de-scaling procedure, operate the coffeemaker twice with tap water in order to rinse away any residual substances.



3. Pump unit removal

To separate the pump unit (item 24) from the hotplate unit (item 22), the two plastic snaps at place A have to be loosened. Then the pump unit can be lifted out easily.

4. Exchanging the switch unit

Remove the panel (11) by carefully pushing a small screwdriver into the chink at point A and moving it towards to point B (see exploded view). Do not damage the housing. If the panel has been damaged, get a new one.

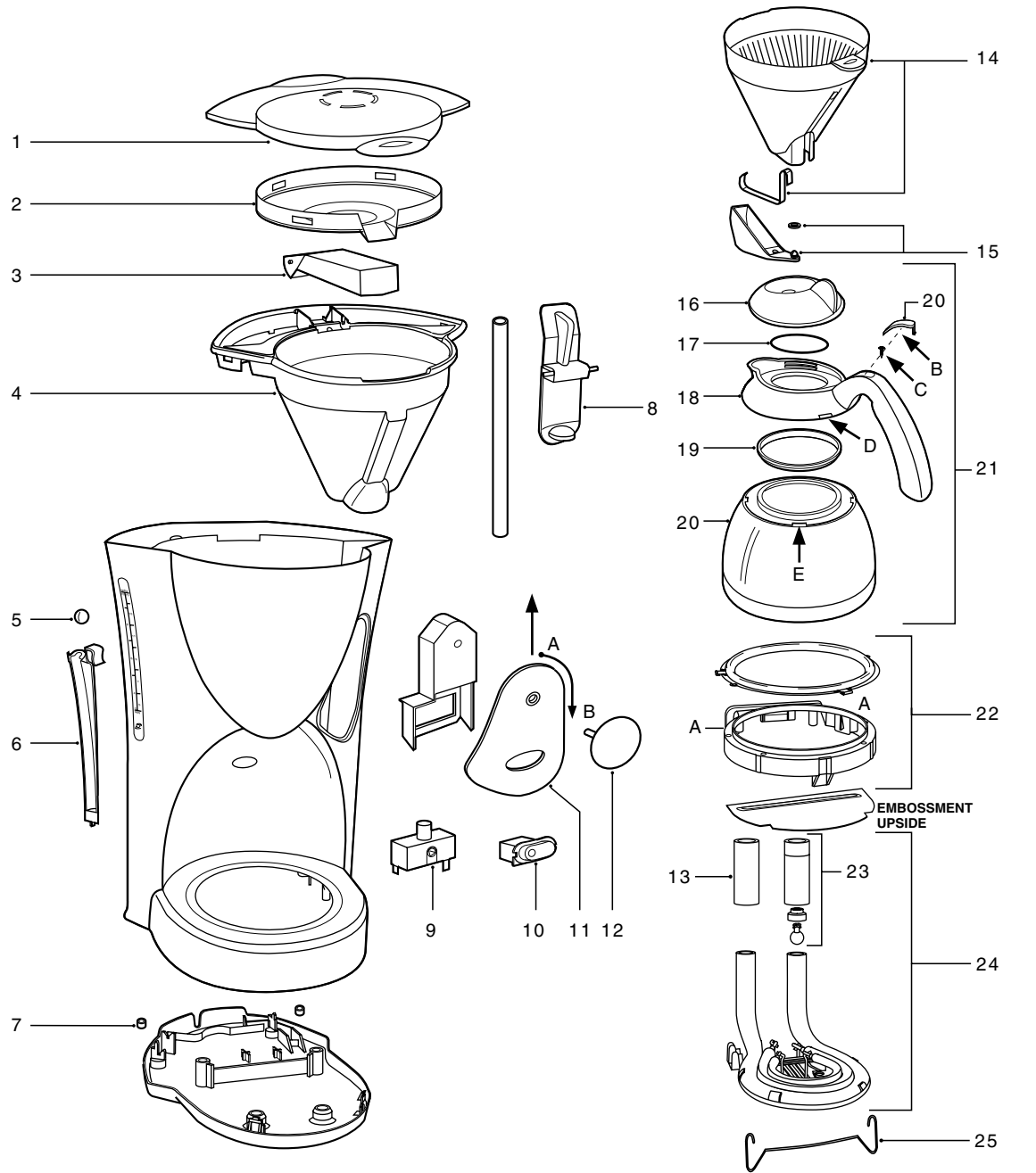
5. Thermosjug handgrip removal (bajonet catch)

To separate the handgrip 18 from the metal jug 20, lift up the small cover B and unscrew the screw C. Then put a small screwdriver at place D. Lift up the handgrip and turn simultaneous the handgrip anti-clockwise 45°. Before (re)placing the handgrip, apply a drop of detergent to the sealing ring 19. This will make it easier to position the handgrip by pushing it downwards and rotating.



PHILIPS

HD 7611/A



1	4822 442 01697	Tank lid	black	17	4822 530 10459	O-ring 60 x 1,5	
2	4822 466 12151	Spout disc	black	18	4822 498 10722	Carrier assy (pos. 18 + B + C)	black
3	4822 529 10432	Spout	black	19	4822 532 12886	Sealing ring 70 x 5	
4	4822 256 10543	Filterholder	black	20	4222 247 58130	Carrier cover	black
5	4822 450 10314	Float	orange	21	4822 418 10412	Thermos jug complete	black 2)
6	4822 450 10313	Window wall	transparant	22	4822 466 11697	Hotplate unit therm	
7	4822 462 11155	Stud		23	4822 360 50864	Valve hose unit	
8	4822 402 11252	Jug lever	black	24	4822 466 11697	Pump unit 1200W	230V
10	4822 276 13973	Switch on/off	salmon	25	4822 492 71174	Wire spring	
11	4822 466 12152	Switch panel assy	black				
12	4822 410 12238	Insert disc	black				
13	4822 532 21371	Hose piece					
14	4222 259 32970	Filter with spring	aubergine 1)				
15	4822 360 10435	Drip stop assy	aubergine				
16	4822 442 01698	Thermos jug lid	black				

Notes:

- Optional part for use as an insert in item 14:
 4822 480 50479 Permanent filter nylon
 4822 480 10107 Permanent filter stainless steel
- Commercial trade number of the complete thermosjug is HD 7950