

Service  
Service  
Service



Philips Domestic Appliances and Personal Care

# Service Manual

## GENERAL INFORMATION

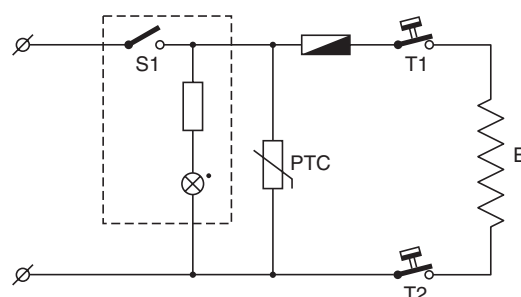
SAP coding HD 5405/6

After actuating the main switch S1 (item 10/11) water in container 33 starts to heat up, because thermostats T1 and T2 are switched on (item 23 and 31).

After the boiling point has been reached, sensor-spring 19 expands and pushes rod 20 downwards. The hot water flows along thermostat T1 and rubber valve 24, into filter 1.

When all the hot water has passed, thermostat T1 has been heated up and has switched off the heating element. The function of thermostat T2 (item 31) is only to limit the temperature of the heating element.

To start the process again, cold water must be poured via lid 40, along sensor 19. This sensor will close valve 24 and thermostat 23 will cool down immediately and switch on the element.



## PRODUCT INFORMATION

Voltage	: 230 V
Frequency	: 50 - 60 Hz
Power consumption	: Heating element 1250 W PTC-element 50 W
Coloursetting	: Black
Tank/jug capacity	: 1000 cc

## SERVICE INFORMATION

Thermostat T1	: 75°C
Thermostat T2	: 140°C
Fuse cut-off temp.	: 192°C

## REPAIR INSTRUCTIONS

### De-scaling

In case the valve system is nearly or less clogged by scale, operate the coffeemaker two times with a 10-15% solution of vinegar, citric or tartar acid.

**Do not use other de-scaling agents as they may harm the appliance.**

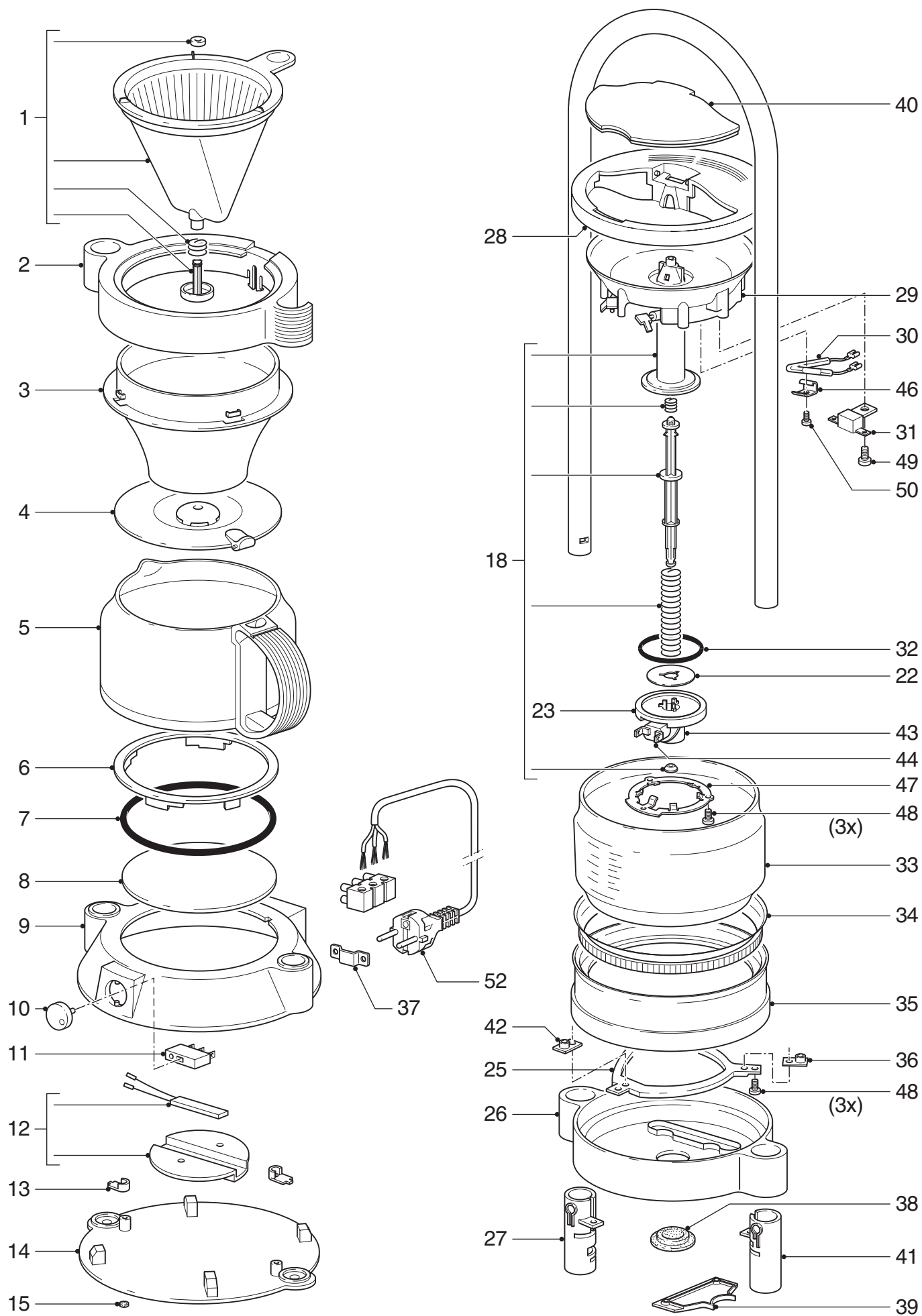
In addition to this operation it is recommended to clean the inside of the glass tank with a acid-soaked cloth.

After the de-scaling procedure, operate the coffeemaker with tap water to rinse away any residual substances.

**This product meets the requirements regarding interference suppression on radio and TV.**

**After the product has been repaired, it should function properly and has to meet the safety requirements as officially laid down at this moment.**

# HD 5405/6



Pos	Service code	Description	
1	9965 000 06592	FILTER ASSY	
2	4822 441 31408	FILTER SWIVEL	
3	4822 441 31414	FILTER HOLDER	
4	9965 000 12793	JUG COVER LID	
5	4822 418 40984	JUG 1000 CC	
6	4822 532 12339	HOTPLATE RING	
7	9965 000 06596	SILICONE RING	
8	4822 466 83242	HOTPLATE	
9	9965 000 12794	FOOT PLATE	
10	9965 000 06599	SWITCH COVER	
11	9965 000 06600	SWITCH	
12	9965 000 06601	HEATING ELEMENT	
13	4822 404 40851	FIXING PIECE	
14	9965 000 12795	BOTTOM	
15	9965 000 06603	FOOT RUBBER	
16			
17			
18	9965 000 09357	INLET VALVE ASSY	Pos 23 VALVE included
19			
20			
21			
22	4822 532 13075	RING	
23	9965 000 12796	VALVE	
24			
25	4822 404 40852	FIXING BRACKET	
26	9965 000 12797	HOUSING PART	
27	4822 532 70329	FIXING BUSH	
28	9965 000 12798	TANK LID	
29	9965 000 12799	HEATING ELEMENT,	230 V / 1250 W
30	9965 000 12800	THERMAL FUSE,	192 °C
31	4822 282 20289	THERMOSTAT HEATING ELEMENT	
32	4822 532 52702	SEALING RING	
33	4822 418 40998	GLASS CONTAINER	
34	4822 532 61282	SEALING RING	
35	4822 441 31409	ELEMENT HOUSING	
36	4822 466 12075	ISOLATION PART	
37	9965 000 12801	ISOLATION PART FOR CABLE	
38	4822 532 52703	RUBBER SEALING	
39	9965 000 09364	COVER CORD THERMINAL	
40	9965 000 12802	COVER LID WATERTANK	
41	4822 532 70331	FIXING BUSH	
42	9965 000 06614	ISOLATION PART	
43	9965 000 06615	GASKET	
44	9965 000 06616	THERMOSTAT VALVE	
45			
46	9965 000 06617	BRACKET THERM. FUSE	
47	9965 000 06618	SPRING	
48	9965 000 12803	SCREW, M3X8, TORX-10,	FIX ITEM 25 and 47
49	9965 000 12804	SCREW, M4X10,	FIX THERMOSTAT ITEM 31
50	9965 000 12805	SCREW, M3X6, TORX-10,	FIX FUSECLAMP ITEM 46
51	9965 000 12806	SCREW M4X8	FIX EARTHWIRE
52	9965 000 14377	CORDSET	