

# FIELD REPLACEABLE UNIT DOCUMENTATION

**Tecra™**

## **S1 Series**

---

### GENERAL INFORMATION

---

#### **Tools Required for Proper Disassembly and Reassembly:**

- 1. Phillips Screwdriver (Size 0&1)**
- 2. Flat head Screwdriver**
- 3. Case Separator**
- 4. ESD Wrist Strap**
- 5. ESD mats**
- 6. Tweezers**

Before attempting any of the following procedures, make sure that the main battery and AC adaptor is not connected to the unit and the environment in which you are working on is protected from Electro-Static Discharge(ESD).

---

# **TOSHIBA**

**Tough Enough for Today's World.**

# FIELD REPLACEABLE UNIT DOCUMENTATION

## **Tecra<sup>TM</sup>** **S1 Series**

---

### **TABLE OF CONTENTS:**

- 1. BATTERY PACK REMOVAL**
- 2. OPTIONAL PC CARD REMOVAL**
- 3. SELECT BAY REMOVAL**
- 4. CD-R/W/DVD-ROM DRIVE DISASSEMBLY**
- 5. MEMORY MODULE REMOVAL**
- 6. HDD REMOVAL**
- 7. MODEM REMOVAL**
- 8. COOLING MODULE REMOVAL**
- 9. CPU REMOVAL**
- 10. KEYBOARD REMOVAL**
- 11. PALM REST COVER REMOVAL**
- 12. TOUCH PAD REMOVAL**
- 13. WIRELESS LAN CARD REMOVAL**
- 14. RTC BATTERY REMOVAL**
- 15. SPEAKERS REMOVAL**
- 16. LCD ASSEMBLY REMOVAL**
- 17. TOP COVER REMOVAL**
- 18. I/O BOARD REMOVAL**
- 19. SYSTEM BOARD REMOVAL**
- 20. 14.1" DISPLAY MASK REMOVAL**
- 21. FL INVERTER AND 14.1" LCD REMOVAL**

---

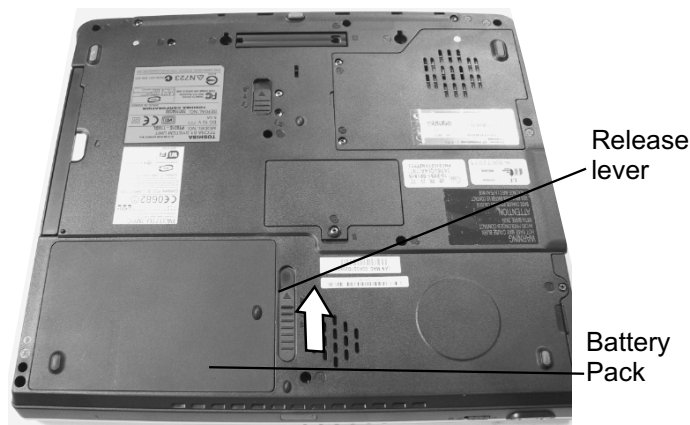
# **TOSHIBA**

**Tough Enough for Today's World.**

# FIELD REPLACEABLE UNIT DOCUMENTATION

## Tecra<sup>TM</sup> S1 Series

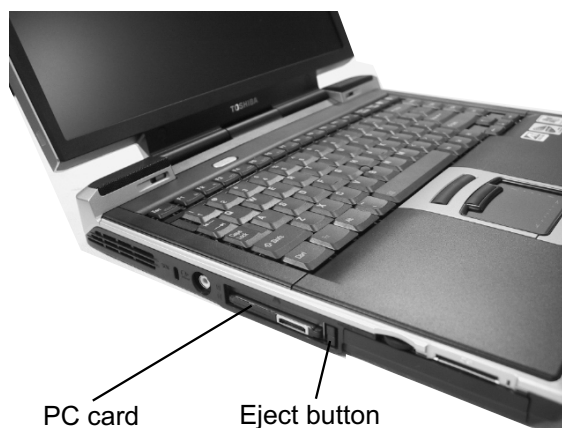
### BATTERY PACK REMOVAL



1. Turn the computer upside down as shown.
2. Slide the **battery release lever** in the direction of the arrow.
3. Lift out the **battery**.

Note: The battery release lever will only unlatch if the unit is upside down.

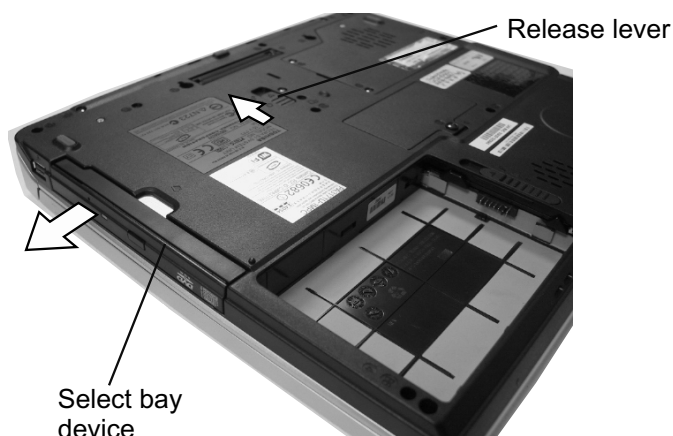
### OPTIONAL PC CARD REMOVAL



1. Press the **eject button** for the PC card you want to remove.
2. Press the extended **eject button** to pop the PC Card out.
3. Grasp the **PC card** and remove it.

**NOTE:** Before removing any PC Card device, make sure it is "STOPPED" in the PC Card manager.

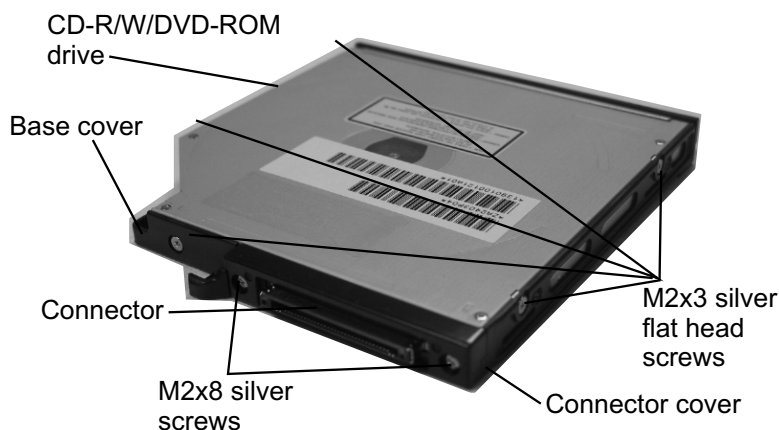
### SELECT BAY REMOVAL



1. Turn the computer upside down.
2. Slide the **release lever** in the direction of the arrow.
3. Pull out the **select bay device** in the direction of the arrow.

**NOTE:** If the lock screw is in locked position, remove it and attach it to the other hole for temporary retention of the screw.

### CD-R/W/DVD-ROM DRIVE DISASSEMBLY



1. Remove **five M2x3 silver flat head screws** securing the base cover and lift out the **cover**.
2. Remove **two M2x8 silver screws** securing the connector cover.
3. Remove the **connector cover** and the **connector** from the CD-R/W/DVD-ROM drive.

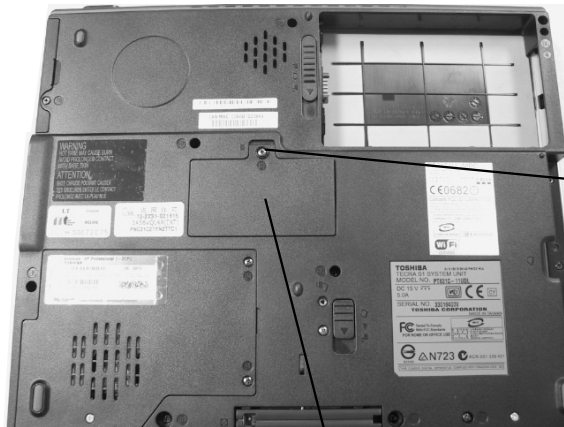
# TOSHIBA

Tough Enough for Today's World.

# FIELD REPLACEABLE UNIT DOCUMENTATION

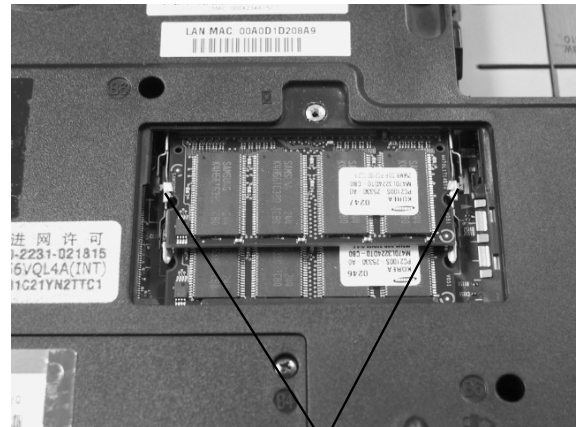
## Tecra™ S1 Series

### MEMORY MODULE REMOVAL



M2.5x2.8  
silver flat  
head screws

Memory cover

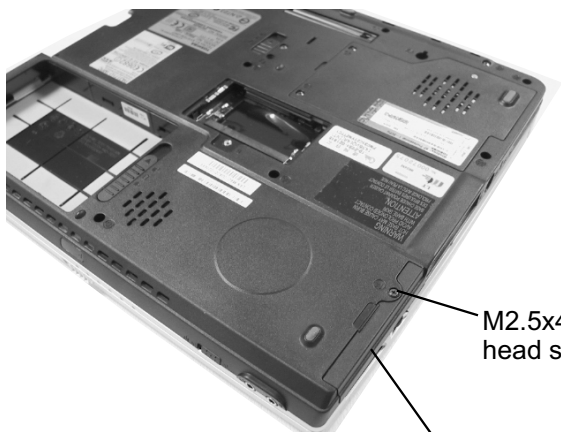


Memory clips

1. Turn the computer upside down.
2. Remove **one M2.5x4 black screw** securing the memory cover and remove the **memory cover**.

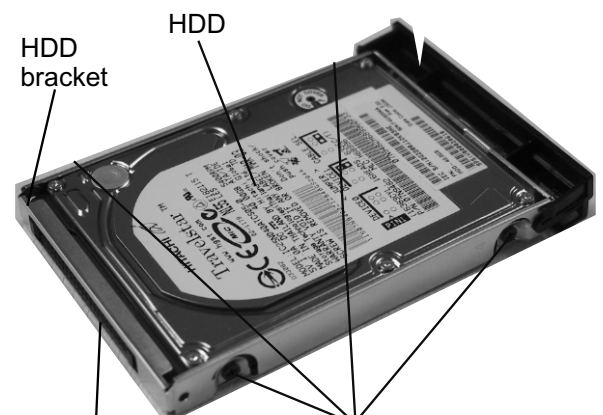
3. Spread the **memory clips** outward and pull the **memory module** out of the connector on a 30 degree angle.

### HDD REMOVAL



M2.5x4 black flat  
head screw

HDD assy



HDD bracket

HDD

HDD connector

M3x4 flat head brass screws

1. Turn the computer upside down.
2. Remove **one M2.5x4 black flat head screw** securing HDD assembly.
3. Slide the **HDD assembly** out of the HDD bay..

4. Remove **four M3x4 brass flat head screws** securing the HDD to the bracket and lift the drive out of the **bracket**.
5. Unplug the **HDD connector** from the drive.

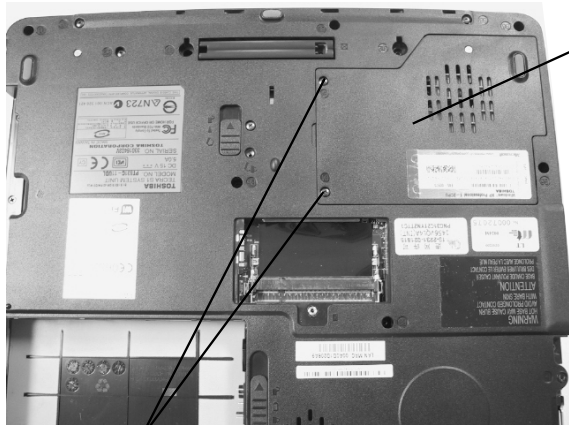
# TOSHIBA

Tough Enough for Today's World.

# FIELD REPLACEABLE UNIT DOCUMENTATION

## Tecra™ S1 Series

### MODEM BOARD REMOVAL

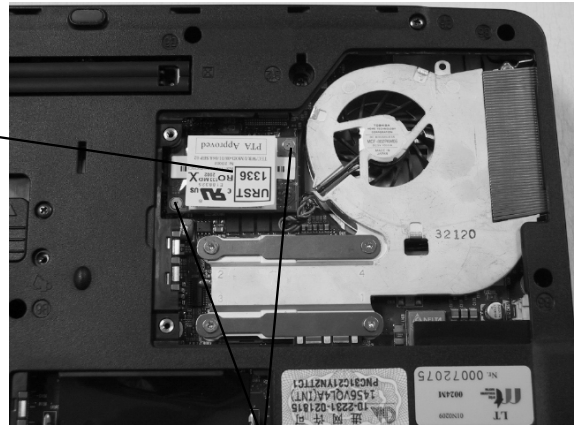


Modem/CPU cover

Modem board

M2x4 black screws

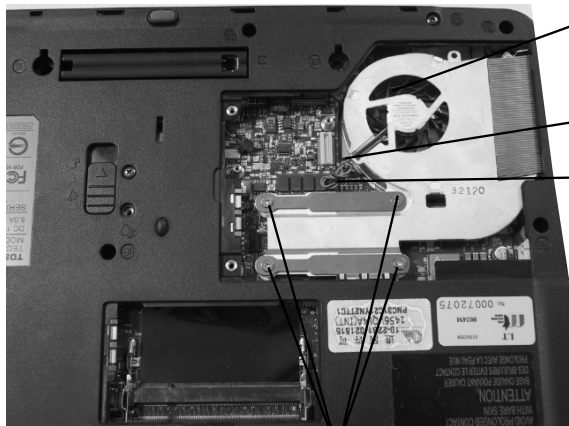
1. Turn the computer upside down.
2. Remove **two M2.5x4 black screws** securing the modem cover.
3. Remove the **modem cover**.



M2x4 brass screws

4. Remove **two M2x4 silver flat head screws** securing the modem board.
5. Disconnect the **modem board** from PJ1006 on the system board.
6. Disconnect the **modem cable** from JP1 on the modem card.

### COOLING MODULE REMOVAL



Cooling module

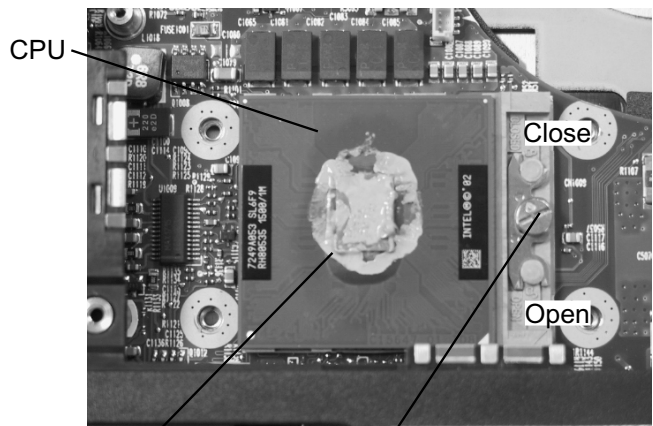
Fan cable

PJ770

silver flat head screws

1. Disconnect the **fan cable** from CN1007 on the system board.
2. Remove **four silver flat head screws** securing the cooling module.
3. Lift out the **cooling module**.

### CPU REMOVAL



CPU

Silicone grease

CPU lock

Close

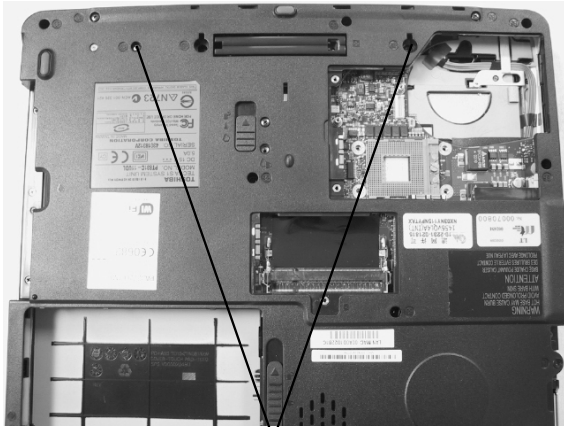
Open

1. Insert a **flat head screwdriver** to the **CPU lock** and rotate it counter-clockwise to unlock the **CPU**.
2. Lift out the **CPU**.

# FIELD REPLACEABLE UNIT DOCUMENTATION

## Tecra™ S1 Series

### KEYBOARD REMOVAL



M2.5x12 black screws

1. Turn the computer upside down.
2. Remove **two M2.5x12 black screws** securing the keyboard holder.



Keyboard

Keyboard holder

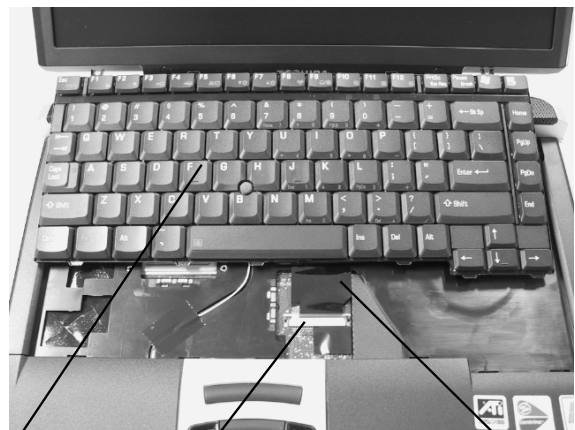
3. Turn the computer right side up and open the display panel.
4. Using the **case separator**, unlatch the **keyboard holder** at the top of the keyboard.

### KEYBOARD REMOVAL



M2.5x2.8 black screws

5. Remove **two M2.5x2.8 black screws** securing the keyboard.



Keyboard

CN7

Keyboard cable

6. Lift out the **keyboard** and set it as shown above.
7. Disconnect the **keyboard cable** from **CN7** on the system board.
8. Lift out the **keyboard**.

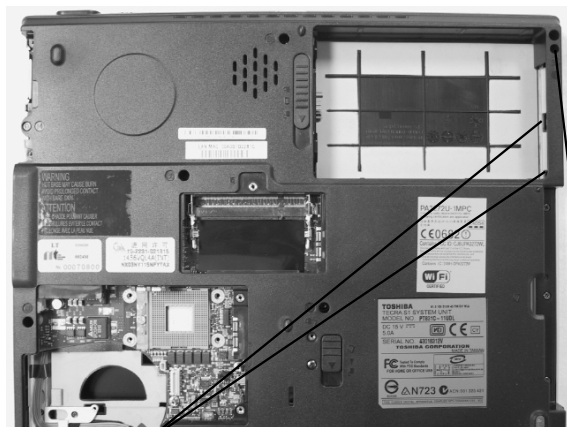
# TOSHIBA

Tough Enough for Today's World.

# FIELD REPLACEABLE UNIT DOCUMENTATION

## Tecra™ S1 Series

### PALM REST COVER REMOVAL



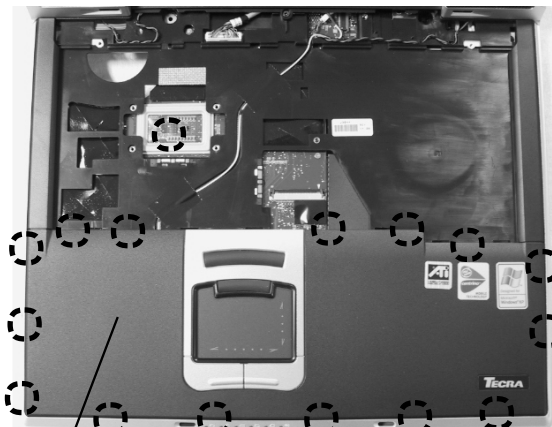
Latches

M2x4 black flat head screw

1. Turn the computer upside down.
2. Remove **one M2x4 black flat head screw** securing the palm rest cover.
3. Release the **two latches** securing the palm rest cover.



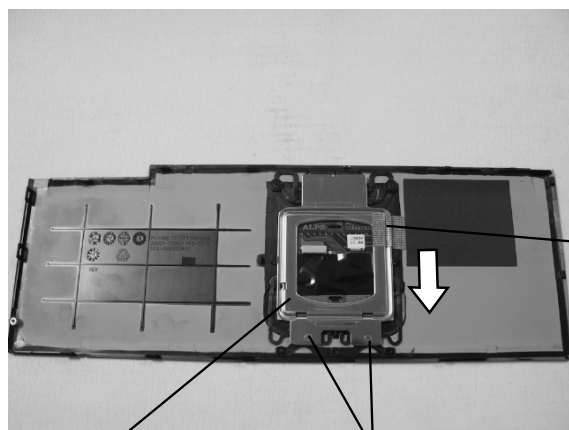
Latch



Palm rest cover

4. Turn the computer right side up and open the display panel.
5. Lift up the right side of the palm rest cover and slowly pull towards the right to release the remaining 13 latches securing the palm rest.

### TOUCH PAD REMOVAL

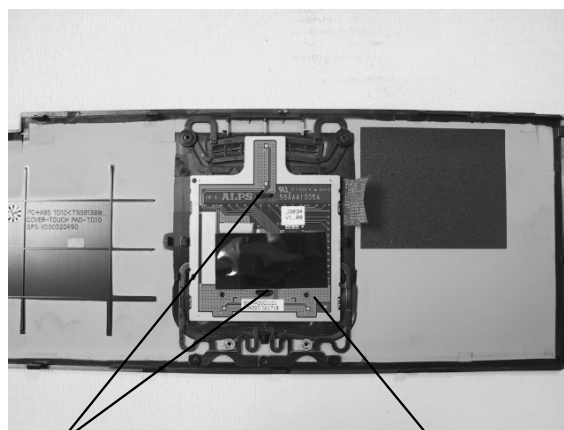


Touch pad plate

M2x3 silver flat head screws

Tape

1. Remove **two M2x3 silver flat head screws** securing the touch pad plate
2. Peel off the **tape** securing the touch pad plate.
3. Slide the **touch pad plate** in the direction of the arrow and lift out the **touch pad plate**.



Latches

Touch pad board

4. Release the **two latches** securing the touch pad board.
5. Lift out the **touch pad board**.

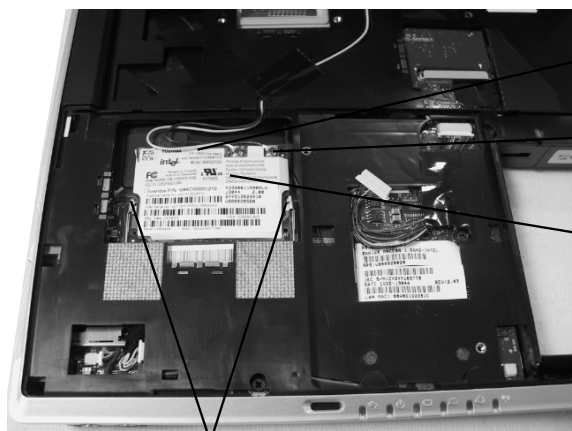
# TOSHIBA

Tough Enough for Today's World.

# FIELD REPLACEABLE UNIT DOCUMENTATION

## Tecra<sup>TM</sup> S1 Series

### WIRELESS LAN CARD REMOVAL



White coax cable  
Black coax cable  
Wireless LAN card

Mini-PCI connector clips

1. Disconnect the **black** and **white coax** from the wireless LAN card.
2. Spread the **Mini-PCI connector clips** and pull the **Wireless LAN card** out of the connector about 45 degree angle.

### RTC BATTERY REMOVAL



RTC cable PJ5 RTC battery

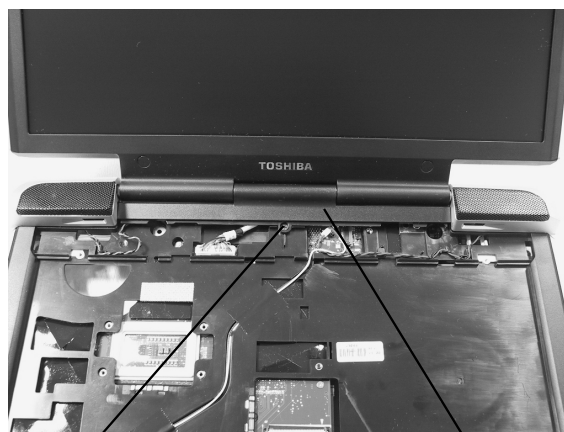
1. Remove the **plastic insulator**.
2. Disconnect the **RTC cable** from **PJ5** on the LED/Bluetooth board.
3. Lift out the **RTC battery**.

### SPEAKERS REMOVAL



M2.5x6 black screws

1. Turn the computer upside down.
2. Remove **four M2.5x6 black screws** securing the left and right speakers.



M2.5x4 black flat head screw

Harness cover

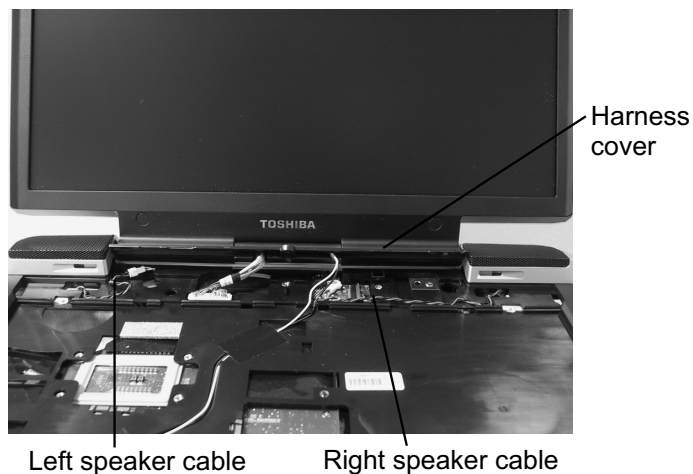
3. Remove **one M2.5x4 black flat head screw** securing the harness cover.



# FIELD REPLACEABLE UNIT DOCUMENTATION

## Tecra™ S1 Series

### SPEAKERS REMOVAL



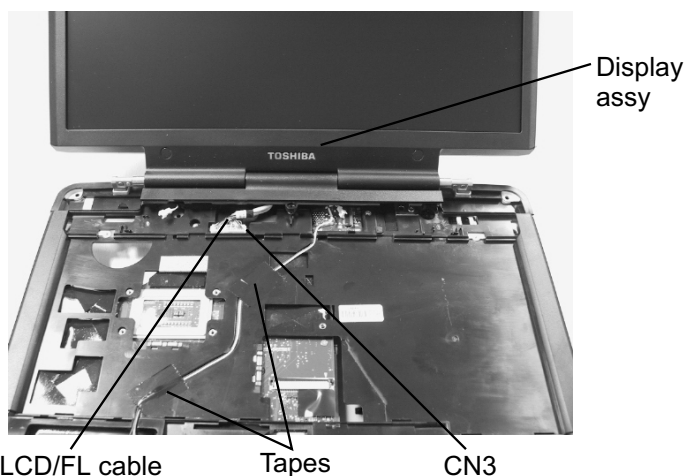
1. Lift up the **harness cover** and disconnect the **left** and **right speaker cables**.
2. Lift out the **left** and **right speakers**.

### LCD ASSEMBLY REMOVAL



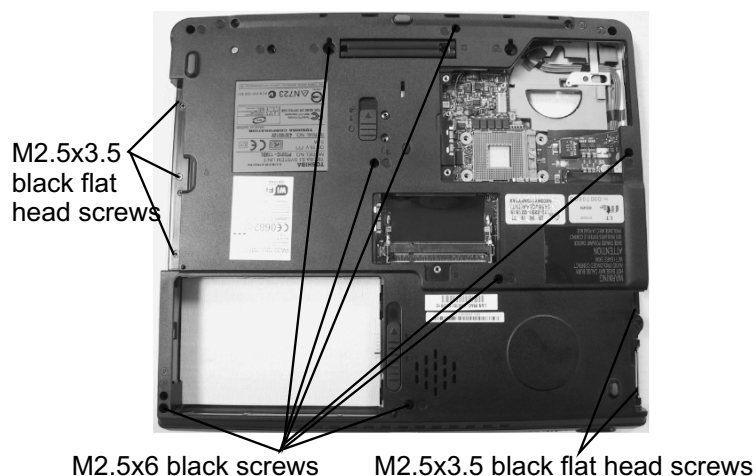
1. Turn the computer upside down.
2. Remove **two M2.5x6 black screws** securing the LCD panel..

### LCD ASSEMBLY REMOVAL



1. Turn the computer right side up and open the display panel.
2. Peel off the **tapes** securing the wireless cables.
3. Disconnect the **LCD/FL cable** from **CN3** on the system board.
4. Lift out the **display assembly**.

### TOP COVER REMOVAL

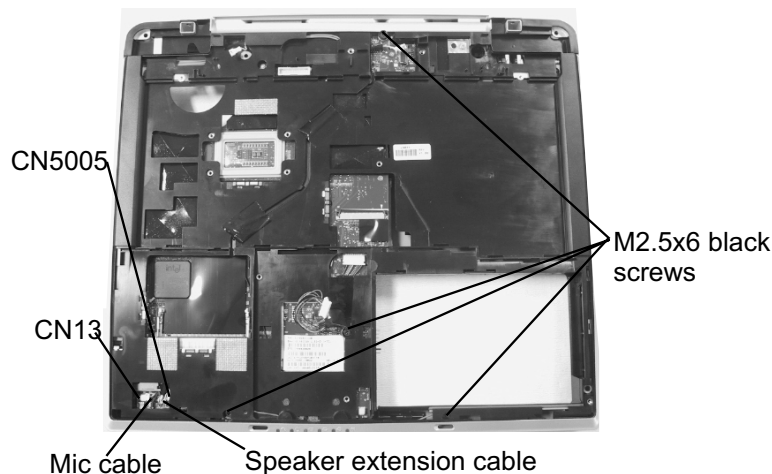


1. Turn the computer upside down.
2. Remove **five M2.5x3.5 black flat head screws** and **seven M2.5x6 black screws** securing the bottom cover.

# FIELD REPLACEABLE UNIT DOCUMENTATION

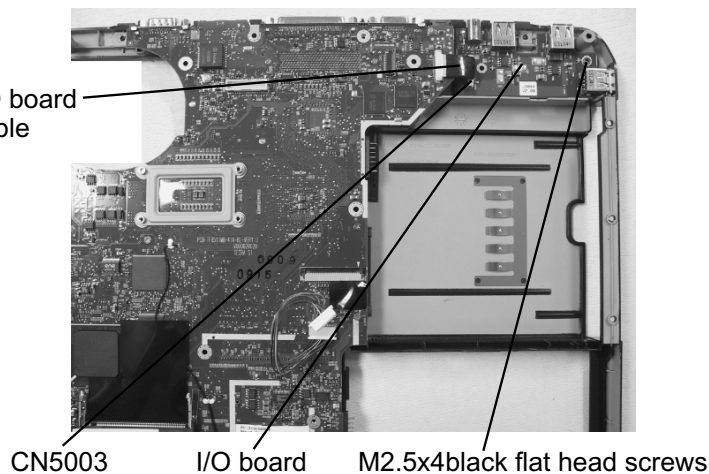
## Tecra™ S1 Series

### TOP COVER REMOVAL



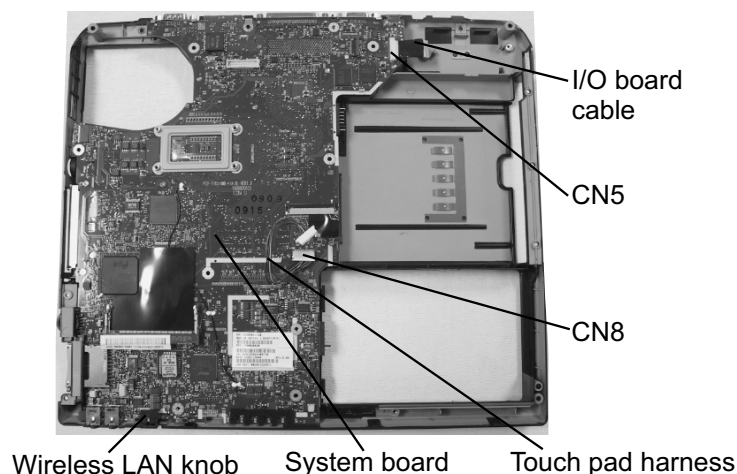
3. Turn the computer right side up.
4. Remove **three M2.5x6 black screws** securing the top cover.
3. Disconnect the **Mic cable** from **CN13** and the **speaker extension cable** from **CN5005**.
4. Gently lift out the **top cover**.

### I/O BOARD REMOVAL

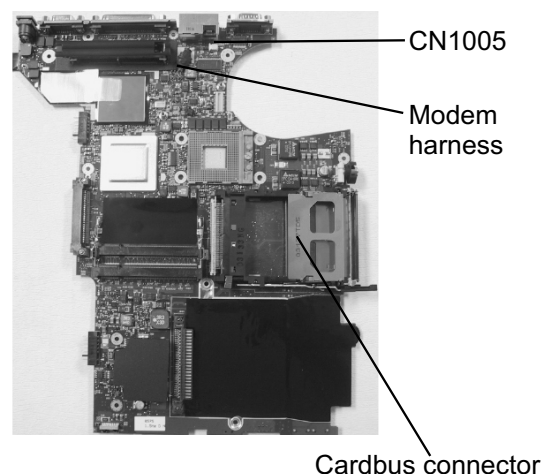


1. Disconnect the **I/O board cable** from **CN5003** on the I/O board.
2. Remove **one M2.5x4 black flat head screw** securing the I/O board..

### SYSTEM BOARD REMOVAL



1. Disconnect the **touch pad harness** from **CN8** and the **I/O board cable** from **CN5** on the system board.
2. Gently lift up the right side of the **system board** and lift it out.
3. Remove the **wireless LAN knob** from the system board.

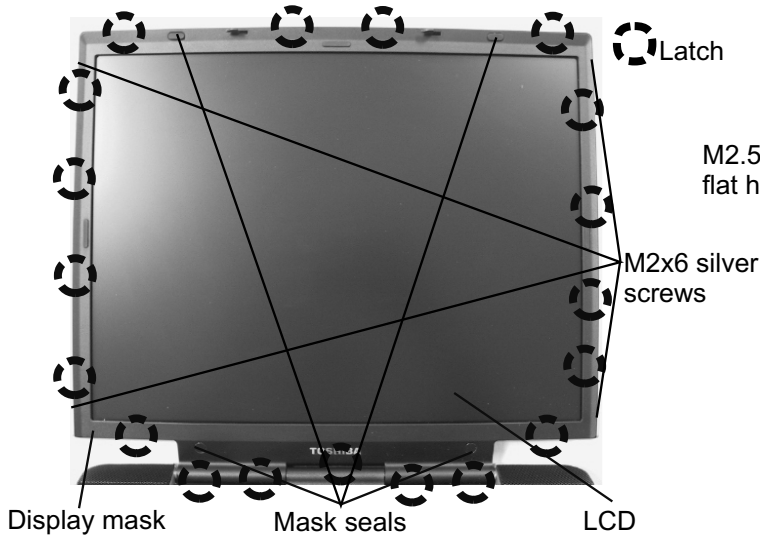


4. Disconnect the **Modem harness** from **CN1005** on the system board.
5. Remove **four M2x10 silver flat head screws** securing the Cardbus connector.
6. Disconnect the **Cardbus connector** from the system board.

# FIELD REPLACEABLE UNIT DOCUMENTATION

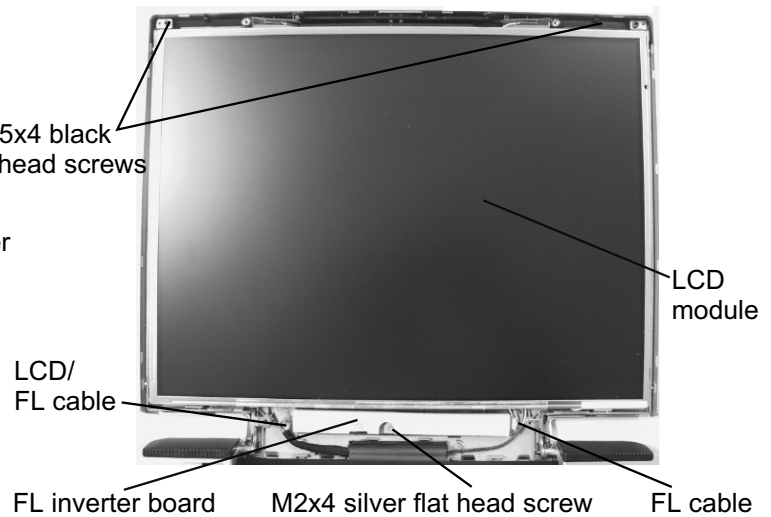
## Tecra<sup>TM</sup> S1 Series

### 14" LCD MASK REMOVAL

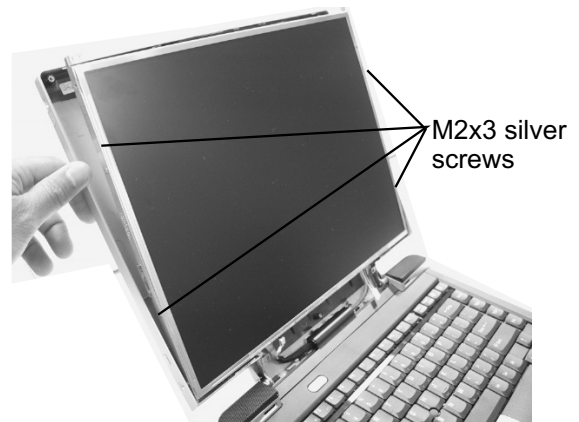


1. Remove **two rubber seals** at the top corners of the display assembly and **two mask seals** at the bottom corners of the display assembly.
2. Remove **four M2.5x4 black flat head screws** and **four M2x6 silver screws** securing the display mask.
3. There are **18 latches** securing the **display mask**. Carefully insert your fingers between the **display mask** and the **LCD module** and pry open the latches starting from the **bottom six latches**, to the **five latches on the right and left sides**, ending with the **top six latches**.

### FL INVERTER AND 14" LCD REMOVAL



1. Remove **one M2x3 silver flat head screw** securing FL inverter board.
2. Carefully lift up the **FL inverter board** and disconnect the **LCD/FL cable** from **CN1** and the **FL cable** from **CN2**.
3. Remove **two 2.5x4 black flat head screws** securing the LCD top cover.



4. Remove **four M2x3 silver screws** securing the LCD module to the LCD brackets.
5. Gently lift out the LCD module and disconnect the LCD/FL cable from the LCD module.

# TOSHIBA

Tough Enough for Today's World.