



Philips Domestic Appliances and Personal Care

Service Manual

PRODUCT INFORMATION

Features

- Colour white/pink
- Ceralon soleplate
- Tank capacity (200 ml)
- Steam rate (25 g/min)
- Calc clean
- Shot of steam (45 g/min)
- Vertical steam
- Drip stop
- Automatic shut-off
- Integrated cord winder with clip
- Length of cord : 1.9 m.

Safety Information

- This product meets the requirements regarding interference suppression on radio and TV.
- After the product has been repaired, it should function properly and has to meet the safety requirements and legal regulations as officially laid down at this moment.

TECHNICAL INFORMATION

Voltage	: 120 V, 220 - 240 V
Frequency	: 50 - 60 Hz
Power	: 1300 W, 1600 W

Water Advice

Suitable for tap water use. However if the tap water in your area is very hard, we advise you to mix it with a equal portion of distilled water or to use distilled water only.

Soleplate

Ceralon, the name indicates the strong combination of a non-stick coating ("Ion") blended with ceramic ("Cera") particles. The soleplate is coated with Ceralon material which is smooth gliding, high scratch resistance and good durability advantage over the non stick coatings.

Auto shut-off (ASO)

A relay in the electronic module interrupts the power to the heating element when the iron has been motionless.

- for 30 secs in the horizontal position.
- for 8 minutes in the vertical position.

The red "Auto-off" pilot light starts blinking.

When the iron is moved again, it is automatically switched 'ON' again.

Calc clean

The integrated Calc clean function ensure a longer lifetime using normal tap water by removing the scale out of the steam chamber.

Shot of steam (S.O.S)

The shot of steam knob releases a powerful shot of steam boost (up to 45 g/min), created by a separate shot of steam area. This helps getting rid of stubborn wrinkles easily.

Vertical Steam

The same shot of steam button can be used in a vertical position for curtains or hanging garments.

Drip stop

Water is only released to through the tank valve into the steam chamber if the soleplate temperature is high enough to evaporate all water. If the temperature is too low, the tank valve is closed by means of a bi-metal disc.

BACKPLATE 1**SWIVEL 2****CORDSET 3**

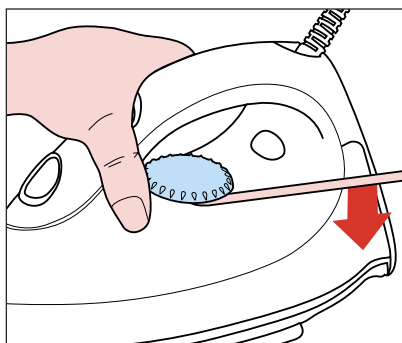
- Remove Screw A 1x
- Remove Backplate 1
- Remove Screw B 2x (cord clamp)

OPERATION KNOB 4**DOSING UNIT 5****INLAY 6****PUMP 8****NOZZLE 9**

- Remove Screw A 1x
- Remove Backplate 1
- Remove Screw B 2x (cord clamp)
- Remove Cord set 3
- Remove Dosing unit 5
- Remove Screw D 1x
- Remove Operation knob 4
- Remove Screw C 2x
- Remove Inlay 6

DIAL 10**LIGHT CONDUIT 11****TANK SET 12****LIGHT 13**

- Remove Screw A 1x
- Remove Backplate 1
- Remove Screw B 2x (cord clamp)
- Remove Cord set 3
- Remove Dosing unit 5
- Remove Screw D 1x
- Remove Operation knob 4
- Remove Screw C 2x
- Remove Inlay 6
- Remove Dial 10
- Remove Screw E 1x

**COVER 14****THERMOSTAT BUSH 15****SOLEPLATE 16****SEALING SET 7**

- Remove Screw A 1x
- Remove Backplate 1
- Remove Screw B 2x (cord clamp)
- Remove Cord set 3
- Remove Dosing unit 5
- Remove Screw D 1x
- Remove Operation knob 4
- Remove Screw C 2x
- Remove Inlay 6
- Remove Dial 10
- Remove Screw E 1x
- Remove Tank set 12
- Remove Screw F 3x
- Remove Cover 14

REPAIR INSTRUCTIONS

- Due to high voltage of the iron, **ONLY** the specified cordsets must be used.
- For standardisation reasons :
 - Dial : With English/Spanish text only.
 - Soleplate : Ceralon soleplate will be provided for all models.
 - Type plate : No information about the typenumber and voltage has been stamped onto the typeplate.
When replacing the typeplate, engrave at least the typenumber onto the typeplate with a sharp object.
- Thermostat, fitted to the soleplate 16 has already been adjusted by the supplier and secured by glue. To avoid mal-function of the iron, **NEVER** re-adjust the thermostat.

NOTE : the thermostat can only be ordered together with the soleplate assembly 16.

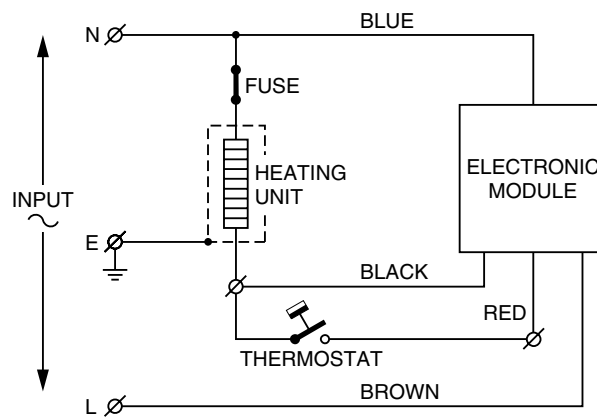
- Parts with numbers from 100 and higher, cannot be ordered separately.

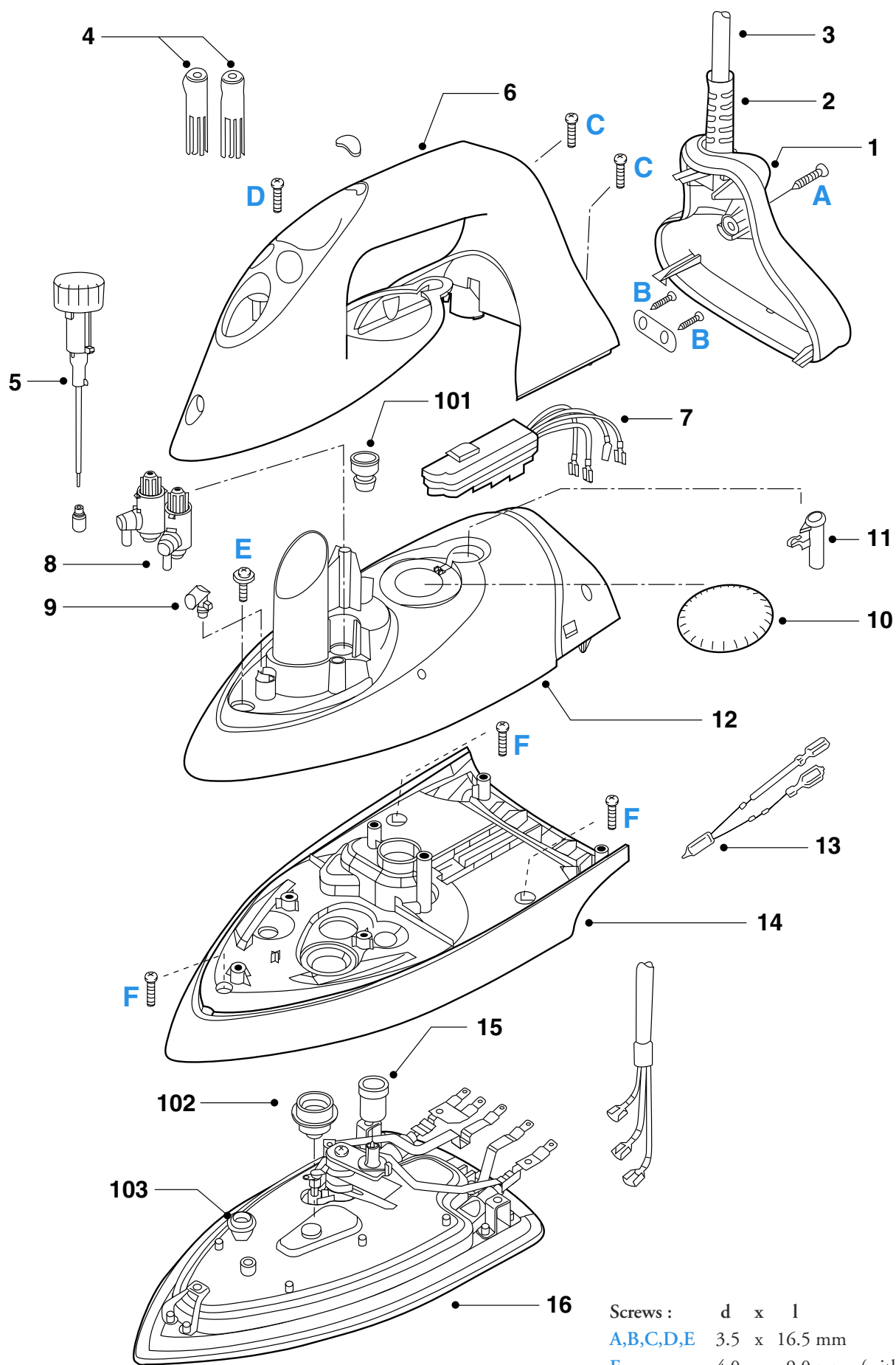
OPTIONAL (accessories)

- No specific issues

Pos	Service code	Description	Consist of
1	4822 441 12291	Backplate	101
2	4822 325 10229	Swivel	
3	4239 000 08160	Cordset EU	
4	9965 000 10618	Operation knob	
5	4239 021 07880	Dosing unit	
6	4239 021 08160	Inlay	
7	4239 020 94030	Auto shut off	
8	4822 360 10416	Pump	
9	4822 479 20254	Nozzle	
10	4239 021 08220	Dial	
11	4239 025 99590	Light conduit	
12	4239 021 08040	Tank set (printed/pink)	
13	4239 020 90650	Lamp	
14	4239 026 04620	Cover	
15	4822 532 61258	Thermostat bush	
16	4239 021 10360	Soleplate + thermostat (120 V/1300 W)	102, 103
	4239 021 09690	Soleplate + thermostat (230 V/1600 W)	
17	4822 310 11269	Sealing set	
18	4239 026 01100	Auto shut off cover	

■ = changed





Screws :	d	x	l
A,B,C,D,E	3.5	x	16.5 mm
F	4.0	x	9.0 mm (with washer)
G	4.0	x	9.0 mm