

Service
Service
Service

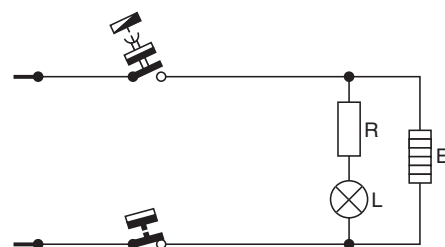


Philips Domestic Appliances and Personal Care

Service Manual

PRODUCT INFORMATION

Voltage	: 100 - 240 V
Frequency	: 50 - 60 Hz
Power consumption	: 900 W
Coloursetting	: White
Contents	: 800 c



SERVICE INFORMATION

To remove the bottom cover you need a tri wing screwdriver
Service code number 4822 395 50422.

Descaling

Regular descaling will prolong the life of the appliance.
When you descale the kettle, you can also descale the filter at the same time by simply leaving it in the appliance.

1. Fill the kettle with water up to three-quarters of the MAX capacity and bring the water to the boil.
2. After the appliance has switched off, add white vinegar (8%) to the MAX level.
3. Leave the solution in the kettle overnight.
4. Empty the kettle and rinse the inside thoroughly.
5. Fill the kettle with clean water and boil the water.
6. Empty the kettle and rinse it with clean water again.

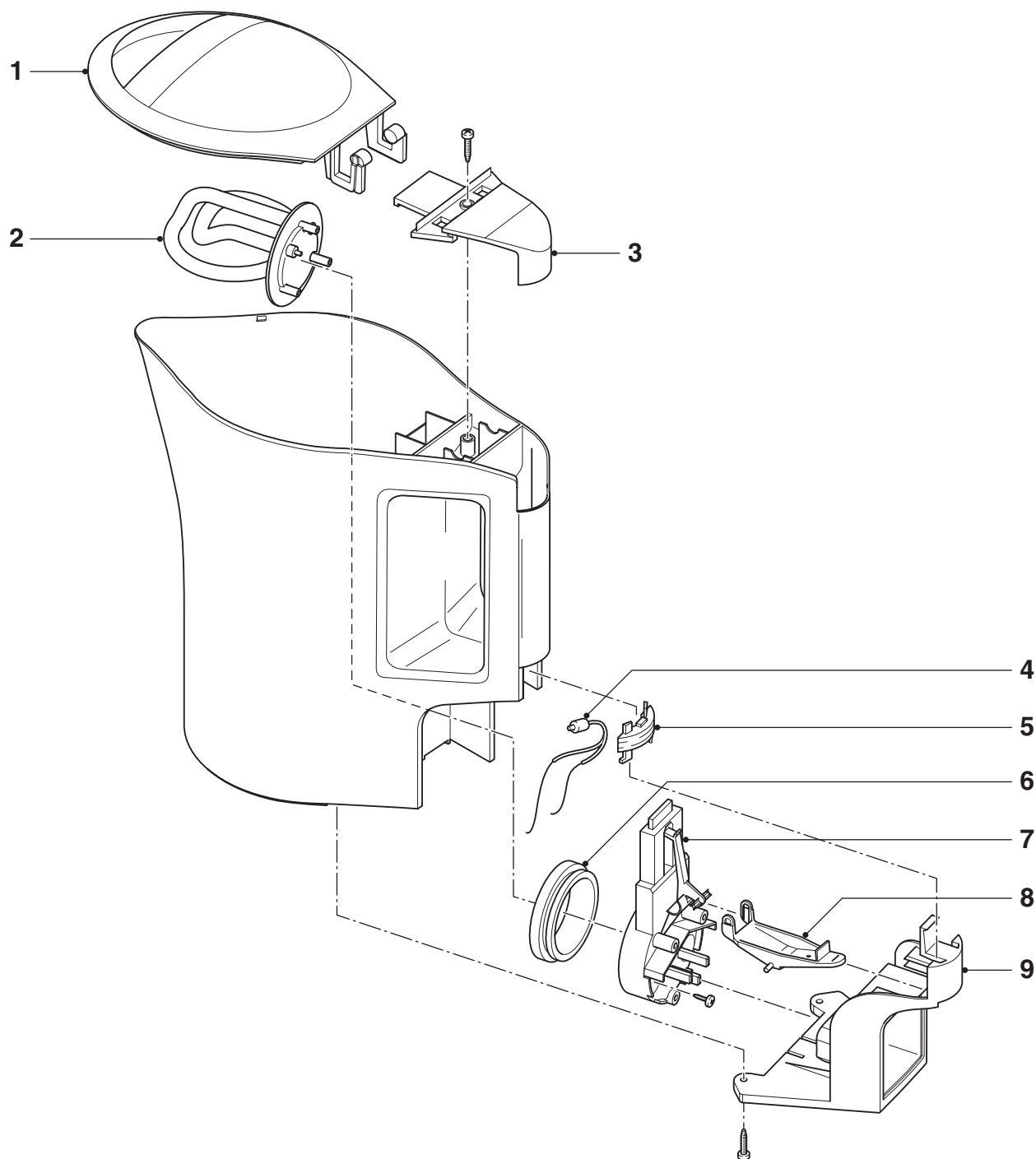
Repeat this procedure if there is still some scale in the kettle.

This product meets the requirements regarding interference suppression on radio and TV.

After the product has been repaired, it should function properly and has to meet the safety requirements as officially laid down at this moment.



HD 4399



Pos	Description	Service code
1.	Lid body & cover	4213 263 45190
2.	Element 220 - 240 V Cu/Ni	4213 266 02840
	Element 220 - 240 V S/S	4213 266 04060
	Element 110 - 120 V Cu/Ni	4213 266 03100
	Element 110 - 120 V S/S	4213 266 04070
3.	Top cover	4213 247 41430
4.	Neon assy (240 V)	4213 266 02770
	Neon assy (110 V)	4213 266 03110
5.	Neon lens moulding	4213 247 45650
6.	Body seal	4213 247 05220
7.	Control unit	4213 258 93170
8.	Switch actuator	4213 247 45660
9.	Bottom cover	4213 247 41960