



Philips Domestic Appliances and Personal Care

# Service Manual

## PRODUCT INFORMATION

### Features

- Colour white/blue
- Coated (Non-stick) soleplate
- Tank capacity (150 ml)
- Integrated calc clean
- Steam rate (15 g/min)

## TECHNICAL INFORMATION

Voltage	: 220-240 V
Frequency	: 50-60 Hz
Power consumption	: 1200 W, 1450 W
Water advice	: Suitable for tap water use. However if the tap water in your area is very hard, we advise you to mix it with a equal portion of distilled water or to use distilled water only.

### Soleplate

Ceralon, the name indicates the strong combination of the of a non-stick coating ("lon") blended with ceramic ("Cera") particles. The soleplate is coated with Ceralon material which is smooth gliding, high scratch resistance and good durability advantage over the non stick coatings.

### Calc clean

The integrated Calc clean function ensure a longer lifetime using normal tap water by removing the scale out of the steam chamber.

**This product meets the requirements regarding interference suppression on radio and TV.**

## DISASSEMBLY ADVICE + PARTS LIST

### BACKPLATE 3

### LAMP ASSY 8

### SWIVEL 9

### CORDSET 10

### INLAY 5

Remove **Screw A** 1x  
 Remove **Backplate** 3  
 Remove **Lamp assy** 8  
 Remove **Swivel** 9  
 Remove **Cord set** 10  
 Remove **Dosing assy** 1  
 Remove **Spray knob** 4  
 Remove **Screw B** 1x  
 Remove **Inlay** 5  
 Remove **Pump assy** 7

### DIAL 2

### TANK SET 6

### THERMOSTAT BUSH 11

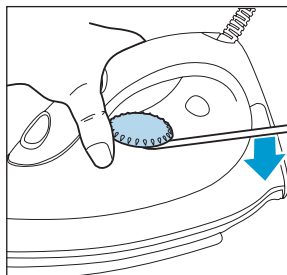
### COVER 12

### ISOLATION STUD 13

### COVER SEAL 14

### SOLEPLATE ASSY 16

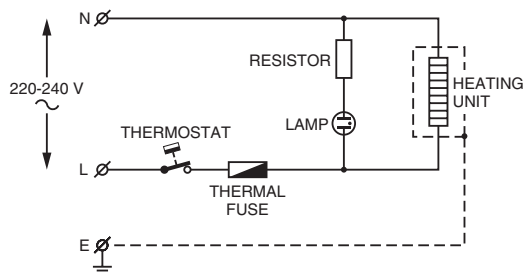
Remove **Dial** 2



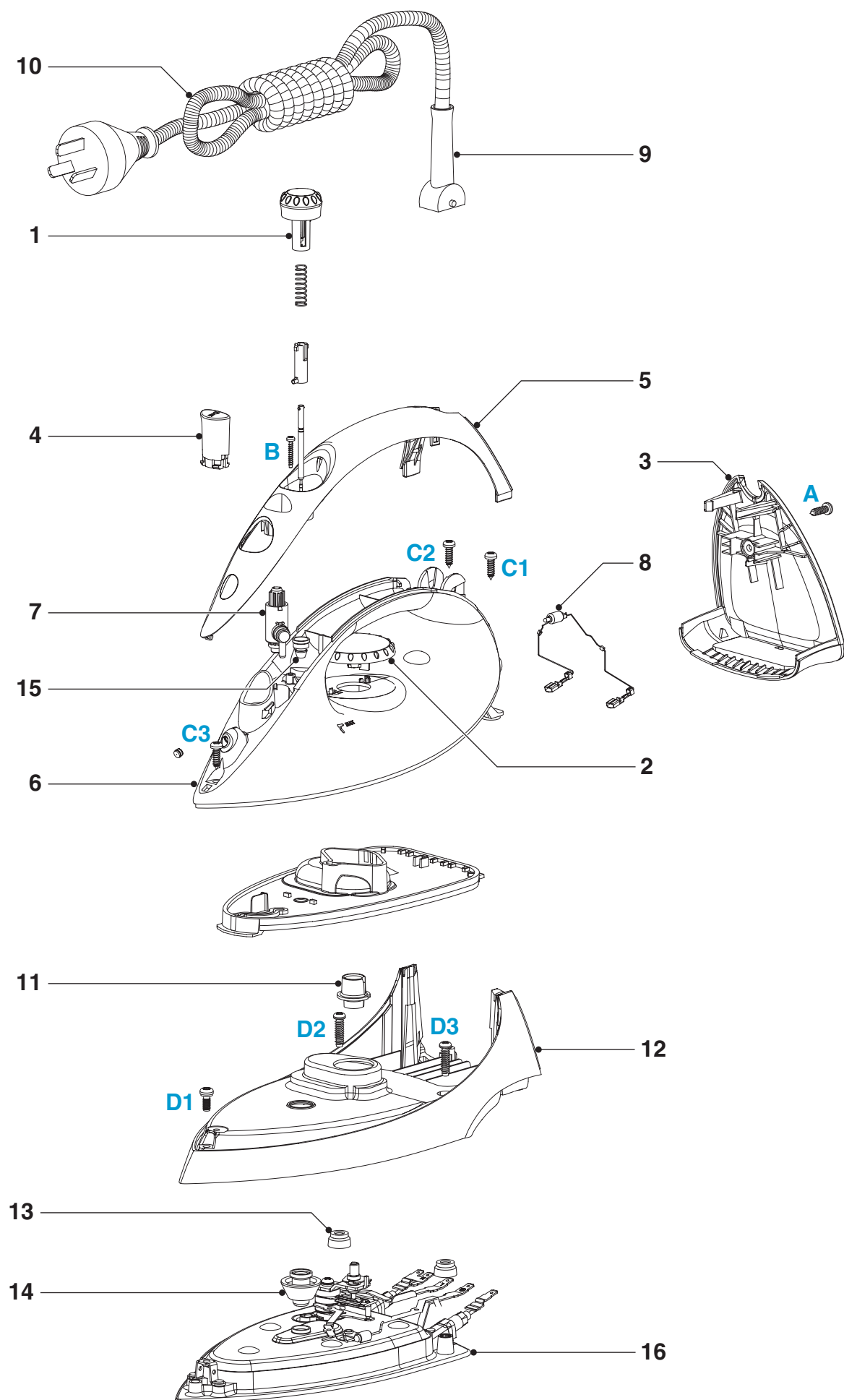
Remove **Dosing assy** 1  
 Remove **Spray knob** 4  
 Remove **Screw B** 1x  
 Remove **Inlay** 5  
 Remove **Pump assy** 7  
 Remove **Screw C** 3x  
 Remove **Tank Set** 6  
 Remove **Thermostat bush** 11  
 Remove **Screw D** 3x  
 Remove **Cover** 12  
 Remove **Isolation stud** 13  
 Remove **Cover seal** 14  
 Remove **Soleplate assy** 16

Pos	Description	Service code
1	Dosing assy (non extra steam)	4239 021 14550
2	Dial (printed) (Eng / S Chinese)	4239 021 15900
3	Backplate	4239 026 12140
4	Spray knob	4239 026 13260
5	Inlay (with spray feature)	4239 026 12110
6	Tank set (with spray)	4239 022 53630
7	Pump assy	4822 360 10416
8	Lamp assy	4239 021 14520
9	Swivel	4822 325 10226
10	Cordset Eu	4822 321 11468
	Cordset PRC	4239 000 06800
11	Thermostat Bush	4239 026 12830
12	Cover	4239 026 12070
13	Isolation stud	4822 532 12722
14	Cover seal	4822 441 81097
15	Tank seal	4239 015 54210
16	Soleplate assy (coated/non stick)	4239 022 53650

= changed



## EXPLODED VIEW



## NOTES

### NOTES :

- 1) For standardisation reasons, Cerelon coated soleplate will be supplied for GC 1121, 1120, 1115, 1110 and Aluminium soleplate for GC 1015, 1010, 1005.
- 2) Parts with numbers from 100 and higher, cannot be ordered separately.
- 3) In case of any defect in thermostat, the complete soleplate has to be resplaced.
- 4) No information about the type number has been stamped into the type plate.  
When replacing the type plate, engrave at least type number and voltage onto the type plate with a tool.
- 5) After the product had been repaired, it should function properly and has to meet the safety requirement and legal regulations set by the related country.