

Service Service Service



Philips Domestic Appliances and Personal Care

Service Manual

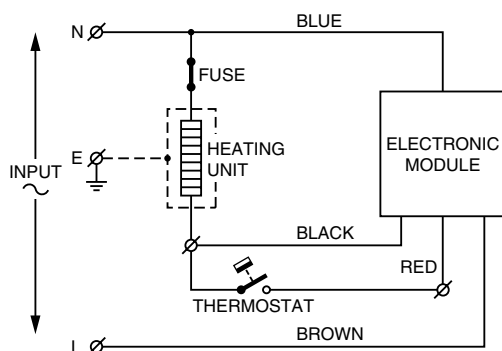
PRODUCT INFORMATION

Features

- Dynaglide soleplate coating
- Spray feature
- Self clean function
- Steam output (15 grams/min)
- Extra steam (25 grams/min)
- Detachable tank
- Water tank capacity 120 ml
- Auto-Shut-Off (ASO) feature

Safety Information

- This product meets the requirements regarding interference suppression on radio and TV.
- After the product has been repaired, it should function properly and has to meet the safety requirements as officially laid down at this moment.



TECHNICAL INFORMATION

Voltage	: 220 ~ 240 V
Frequency	: 50 ~ 60 Hz
Power consumption	: 1200 ~ 1440 W
Dimension (F-box)	: 284 x 114 x 146 mm ³
Weight	: 1100 grams

Self Clean

When the self clean button is pushed, a sudden flow of water is released from the tank into the soleplate. This thermal shock will cause water scale particles to come loose from the steam chamber. These particles are then flushed out through the steam vents by the water.

Auto-Shut-Off (ASO)

This is an energy saving feature that automatically cuts off the power when the iron has been motionless:

- for 30 seconds in the horizontal position
- for 8 minutes in vertical position

When the iron is moved, it automatically switches on again.

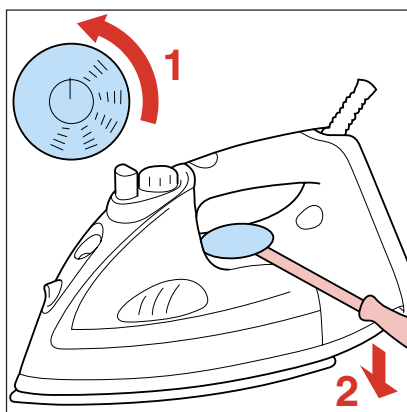
NB: When the iron is plugged in at a horizontal position, it will not be switched off during the first 2 minutes to ensure proper heating up.

PUMP ASSY 3

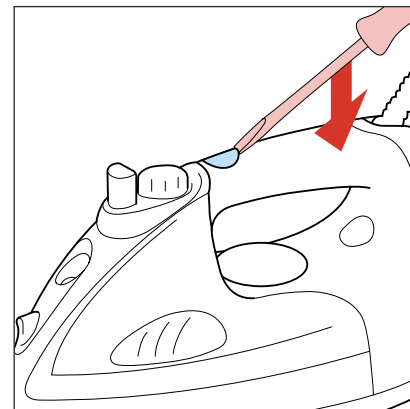
- remove DOSING UNIT 1
- remove OPERATION KNOB 4
- remove screw A
- remove INLAY 102

LAMP ASSY 8**ASO MODULE 22****CORDSET 7****SWIVEL 6****LAMP COVER 9**

- remove screw B (2x)
- remove BACK PLATE 5
- remove screw C (2x) cord clip

DIAL 10**COVER 15****SOLEPLATE 17****THERMOSTAT BUSH 14****COVER SEAL 18**

- remove TANK ASSEMBLY 2
- remove screw B (2x)
- remove BACK PLATE 5
- remove screw C (2x) cord clip
- remove DIAL 10
- remove screw D (2x)
- remove screw E (2x)
- remove HANDLE ASSEMBLY 13
- remove screw F (3x)
- remove COVER 15

EJECTION KNOB 12**EJECTOR SPRING 20****SLIDING PIECE 21****REPAIR INSTRUCTIONS**

- In case of any defect in the thermostat, the complete soleplate has to be replaced.
- Parts with position number more than 100 cannot be ordered separately.

PARTS LIST

Pos	Service code	Description	Consist of
1	4239 021 17810	Dosing unit (extra steam)	101,102,19
2	4239 021 17480	Tank assembly	
3	4239 020 90560	Pump assembly (spray)	
4	4239 026 14520	Operation knob (spray)	
5	4239 015 35840	Backplate - PRC	
	4239 015 36160	Backplate - Hong Kong	
6	4239 026 14310	Swivel	
7	4239 000 06800	Cord set - PRC	
	4239 000 07320	Cord set - Hong Kong	
8	4239 020 92720	Lamp assembly	
9	4239 026 00880	Lamp cover	9,11,12,20,21
10	4239 021 17490	Dial - PRC	
	4239 021 19150	Dial - Hong Kong	
11	4239 014 53790	Rattle spring	
12	4239 026 14490	Ejection knob	
13	4239 021 17470	Handle assembly	
14	4239 026 12360	Thermostat bush	
15	4239 026 03360	Cover	
16	4239 015 70150	Ryton ring	
17	4239 021 17230	Soleplate assembly	
18	4239 015 54220	Cover seal	
19	4239 015 54210	Tank top seal	
20	4239 014 53490	Ejector spring	
21	4239 026 04740	Sliding piece	
22	4239 020 94030	ASO module	

