



Philips Domestic Appliances and Personal Care

Service Manual 4322 277 00209 is herewith cancelled

Service Manual

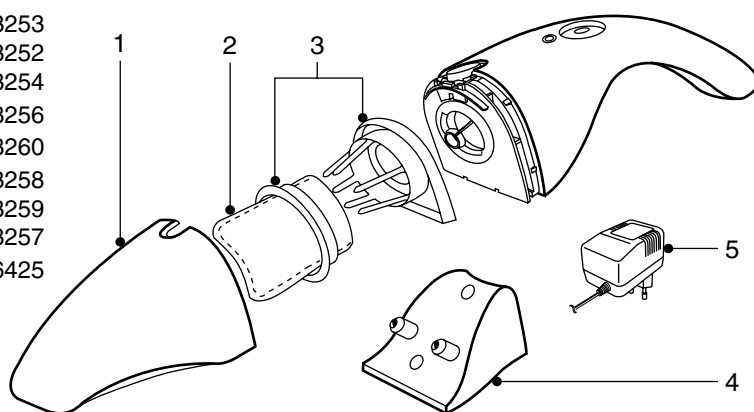
PRODUCT INFORMATION

Rechargeable batteries	:	3 x 1.2V NiCd
Transformer AC / AC	:	230 / 7V AC
Charger indicator	:	Led red
Operation time (fully charged)	:	> 10 minutes
Dust capacity	:	0.4 L
Color setting - HR6045/10	:	White / Gray
- HR6045/20	:	Yellow / Green
- HR6045/30	:	Blue
Weight	:	0.75 kg
Dimensions	:	12.5 x 10.0 x 38.5 cm
Cord length	:	1.8 m

1 Dust container - HR6045/10	white	9965 000 03253
Dust container - HR6045/20	green	9965 000 03252
Dust container - HR6045/30	blue	9965 000 03254
2 Dust bag - HR 6934		9965 000 03256
3 Filter holder assy		9965 000 03260
4 Wall holder - HR6045/10	white	9965 000 03258
Wall holder - HR6045/20	green	9965 000 03259
Wall holder - HR6045/30	blue	9965 000 03257
5 Adapter - 230 V - EU		9965 000 06425

SERVICE INFORMATION

- The dust container and wall holder are all interchangeable for all versions, only with color difference.
- Washable permanent filter is available under type number HR6934
- The rechargeable batteries contained substances, which may pollute the environment. Dispose unused cells at especially assigned places.
- If a repair has been executed, ensure that all the functions of the appliance are working correctly.



This product meets the requirements regarding interference suppression on radio and TV.

After the product has been repaired, it should function properly and has to meet the safety requirements as officially laid down at this moment.