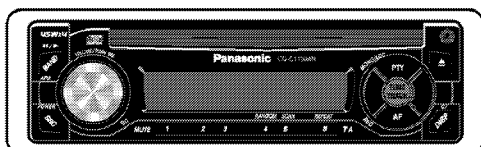


Service Manual

AUTOMOTIVE AFTERMARKET



(CQ-C1120AN)

CQ-C1120AN
CQ-C1120GN
CQ-C1110AN
CQ-C1110GN
CQ-C1100VN

CD Player/Receiver

Specifications*

General

Power Supply	12V DC(11V-16V), Test Voltage 14.4V Negative Ground
Tone Control (Bass)	±12dB at 100Hz
Tone Control (Treble)	±12dB at 10Hz
Current Consumption	Less than 2.5A (CD mode; 0.5W × 4-speaker)
Maximum Power Output	45W × 4 (at 4Ω)
Power Output	20W × 4 (DIN45 324, at 4Ω)
Speaker Impedance	4 - 8Ω
Pre-amp Output Voltage	2.5V (CD mode)
Pre-amp Output Impedance	200Ω

CD Player

Sampling Frequency	8 Times Oversampling
Pick-up Type	Astigma 3-Beam
Light Source	Semiconductor Laser
Wave Length	780 nm
Frequency Response	20 Hz-20kHz (±1dB)
Signal to Noise Ratio	96dB
Total Harmonic Distortion	0.01% (1kHz)
Wow and Flutter	Below Measurable Limits
Channel Separation	75dB

Radio

FM

Frequency Range	87.5MHz - 108MHz
Usable Sensitivity	6dB/μV(S/N 30dB)
Stereo Separation	35dB (at 1kHz)

MW

Frequency Range	531kHz - 1,602kHz
Usable Sensitivity	28dB/μV (S/N 20dB)

LW

Frequency Range	153kHz - 279kHz
Usable Sensitivity	32dB/μV (S/N 20dB)

Dimensions (W×H×D)** 178×50×155mm

Weight** 1.4 kg

* Specifications and the design are subject to possible modification without notice due to improvements.

** Dimensions and Weight shown are approximate.

** Above specifications comply with EIA standards.

Panasonic

© 2004 Matsushita Electric Industrial Co., Ltd. All rights reserved. Unauthorized copying and distribution is a violation of law.

⚠ WARNING

This service information is designed for experienced repair technicians only and is not designed for use by the general public. It does not contain warnings or cautions to advise non-technical individuals of potential dangers in attempting to service a product. Products powered by electricity should be serviced or repaired only by experienced professional technicians. Any attempt to service or repair the product or products dealt with in this service information by anyone else could result in serious injury or death.

IMPORTANT SAFETY NOTICE

There are special components used in this equipment which are important for safety. These parts are marked by ⚠ in the Schematic Diagrams, Circuit Board Diagrams, Exploded Views and Replacement Parts List. It is essential that these critical parts should be replaced with manufacturer's specified parts to prevent shock, fire or other hazards. Do not modify the original design without permission of manufacturer.

CONTENTS

	Page		Page
1 ABOUT LEAD FREE SOLDER (PbF)	3	10 TERMINALS DESCRIPTION	7
2 FEATURES	3	11 PACKAGE AND IC BLOCK DIAGRAM	9
3 FUSE	3	12 REPLACEMENT PARTS LIST	12
4 MAINTENANCE	3	13 EXPLODED VIEW (Unit)	18
5 NOTES	3	14 CD PLAYER MECHANISM PART	19
6 DIMENSIONS	3	15 EXPLODED VIEW (CD Deck)	20
7 LASER PRODUCTS	3	16 WIRING DIAGRAM	21
8 WIRING CONNECTION	4	17 SCHEMATIC DIAGRAM-1	25
9 BLOCK DIAGRAM	5	18 SCHEMATIC DIAGRAM-2	27

1 ABOUT LEAD FREE SOLDER (PbF)

Distinction of PbF PCB:

PCBs (manufactured) using lead free solder will have a PbF stamp on the PCB.

Caution :

- Pb free solder has a higher melting point than standard solder; Typically the melting point is 50 - 70°F (30 - 40°C) higher. Please use a soldering iron with temperature control and adjust it to 700 ± 20°F (370 ± 10°C). In case of using high temperature soldering iron, please be careful not to heat too long.
- Pb free solder will tend to splash when heated too high (about 1100°F/600°C)
- This lead free solder will be used for the products after serial No. 1,000,001.

2 FEATURES

- Sound System with Spurring Realism (2-channel or 4-channel Power Amplifier)
- Powerful Heavy Bass (Stereo/Mono Power Amplifier) : CY-M7052EN/CY-M9054EN
- Radio Data System (RDS)
- Not support 8 cm discs
- Not compatible with MP3/WMA

3 FUSE

- Use fuses of the same specified rating (15A).
- Using different substitutes or fuses with higher rating, or connecting the unit directly without a fuse, could cause fire or damage to the unit.

4 MAINTENANCE

- Wipe the unit with a soft dry cloth.
- Never apply volatile liquids such as benzine and thinner to prevent damage.

5 NOTES

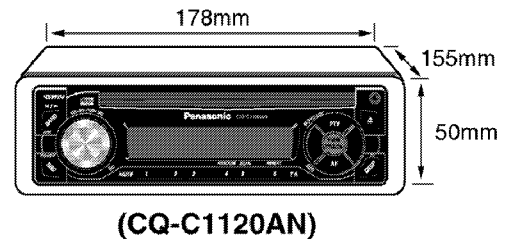
[RADIO BLOCK]

Do not align the AM/FM package block. When the package block is necessary, it will be supplied already aligned at the factory.

[CD DECK BLOCK]

This model has no servo alignment points because microcomputer controls the servo circuit

6 DIMENSIONS



7 LASER PRODUCTS

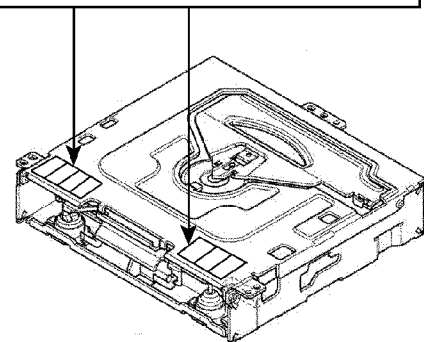
CAUTION:

This product utilizes a laser diode with the unit turned "on", laser radiation is emitted from the pickup lens.

Laser radiation from the pickup lens is safety level, but be sure the followings:

1. Do not disassemble the optical pickup unit, since radiation from exposed laser diode is dangerous.
2. Do not adjust the variable resistor on the pickup unit. It was already adjusted.
3. Do not look at the focus lens using optical instruments.
4. Recommend not to look at pickup lens for a long time.

CAUTION Laser radiation when open.
Do not stare into beam.

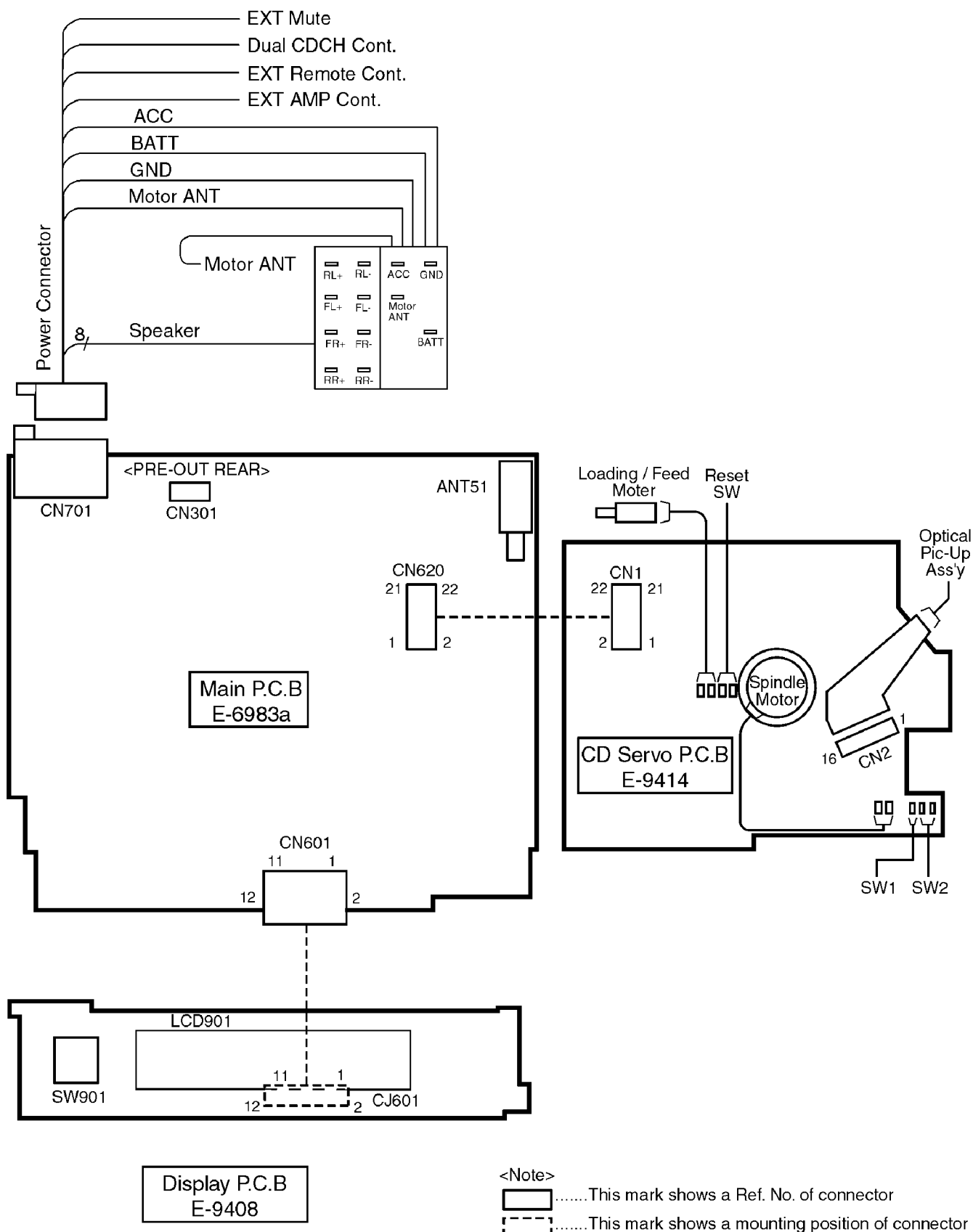


Deck Ass'y (Upper Side)

Caution

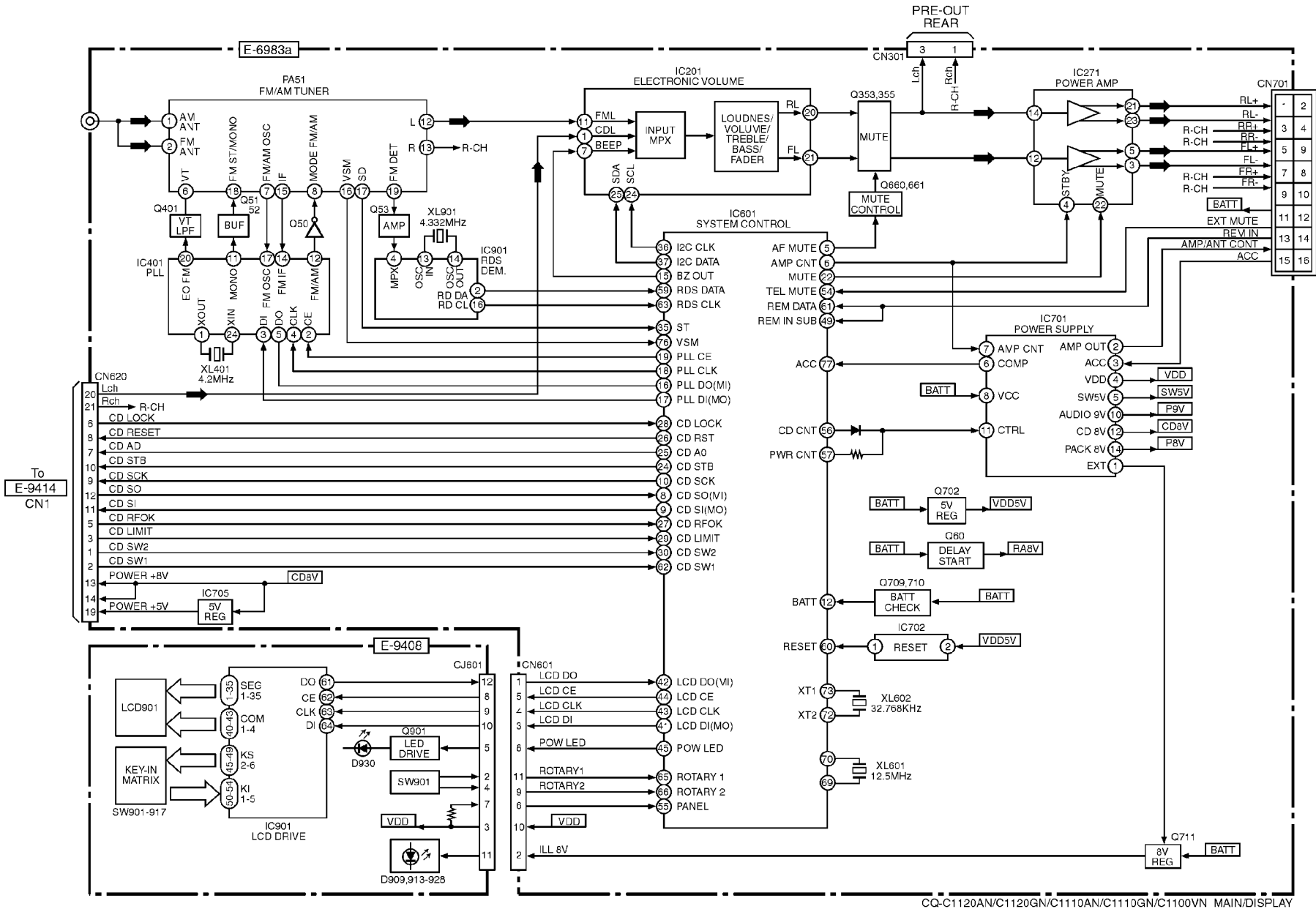
This Product utilizes a laser.
Use of controls or adjustments or performance of procedures other than those specified herein may result in hazardous radiation exposure.

8 WIRING CONNECTION



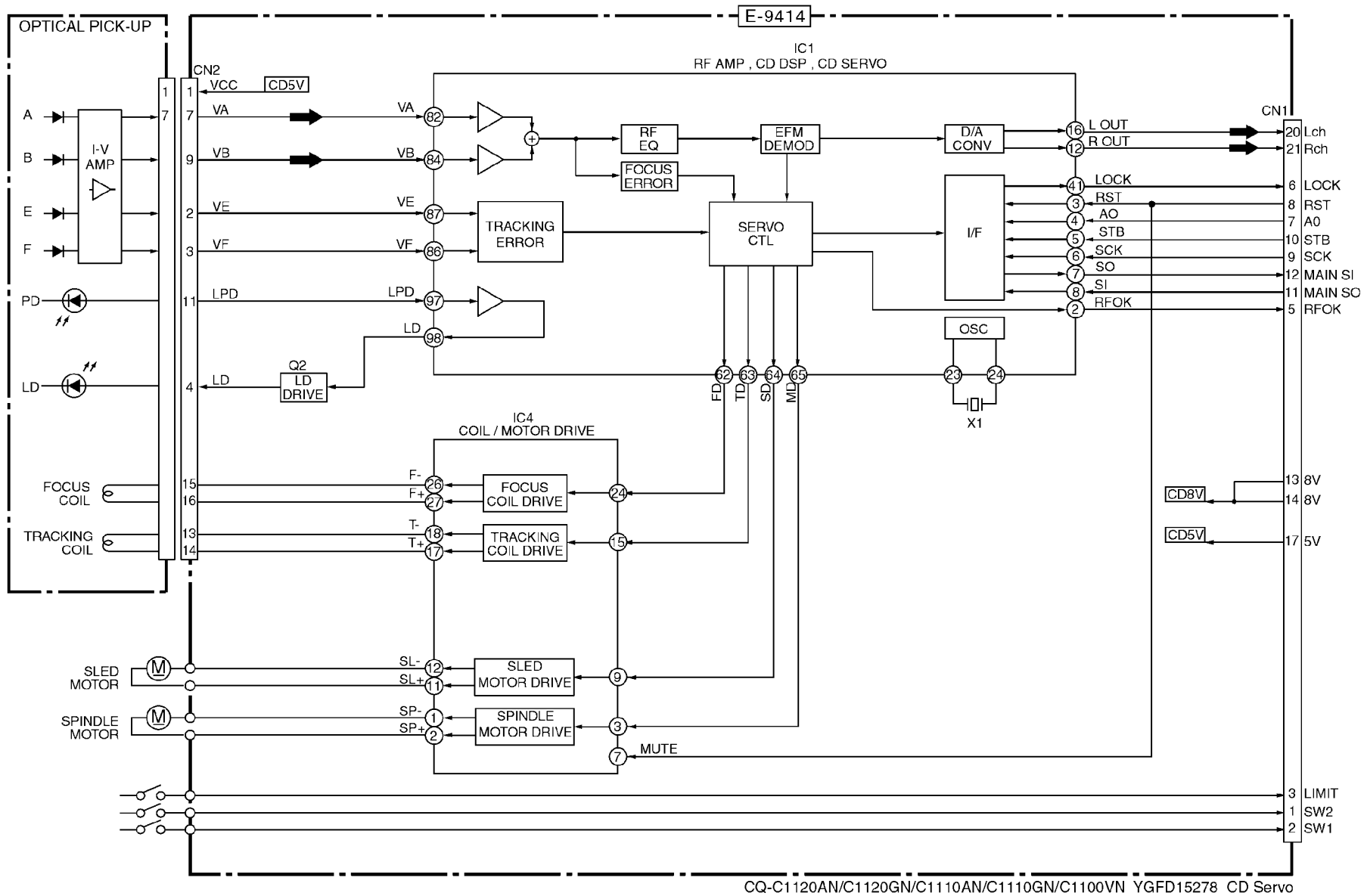
9 BLOCK DIAGRAM

9.1. Main/Display Block



9.2. CD Servo Block

To E 6983a CN620



CQ-C1120AN/C1120GN/C1110AN/C1110GN/C1100VN YGFD15278 CD Servo

10 TERMINALS DESCRIPTION

10.1. Main Block

IC601 : C2CBHF000322

Pin No.	Port	Description	I/O	(V)		
				FM	AM	CD
1	NC	(Ground pull down)	I	0	0	0
2	NC	(Ground pull down)	I	0	0	0
3	NC	(Ground pull down)	I	0	0	0
4	AVSS	Ground	-	0	0	0
5	AF_MUTE	AF mute	O/I	5	5	5.1
6	AMP_CNT	Amp control	O	5	5	5.1
7	AVREF1	(Conecting to +5V)	-	5	5	5.1
8	CD_S0	CD data	I	0	0	0
9	CD_SI	CD data	O	0	0	2.8
10	CD_SCK	CD clock	O	0	0	5
11	CDC_DATA(NC)	No connection	-	-	-	-
12	BATT	BATT detection	I	5	5	5
13	CDC_CLK(NC)	No connection	-	-	-	-
14	REW_OUT(NC)	No connection	-	-	-	-
15	BZ_OUT	Buzzer signal output	O	0	0	0
16	PLL_D0	PLL data	I	5.1	5.1	5.1
17	PLL_DI	PLL data	O	0	0	0
18	PLL_CLK	PLL clock	O	5	5	5.1
19	PLL_CE	PLL chip enable	O	0	0	0
20	NC	No connection	-	-	-	-
21	NC	No connection	-	-	-	-
22	MUTE	Mute control output	O	5	5	5.1
23	NC	No connection	-	-	-	-
24	CD_STB	CD strobe	-	0	0	5
25	CD_AO	CD AO	-	0	0	4.4
26	CD_RST(NC)	No connection	-	-	-	-
27	CD_RFOK	CD RFOK	I	0	0	4.9
28	CD_LOCK	CD lock	I	0.5	0.3	4.9
29	CD_LIMIT	CD limit	I	0	0	5
30	CD_SW2	CD SW2	I	5	5	0
31	NC	No connection	-	-	-	-
32	NC	No connection	-	-	-	-
33	VSS1	Ground	-	0	0	0
34	NC	No connection	-	-	-	-
35	ST	FM stereo signal input	I	5	5.1	5
36	SCL	Audio control clock	O	5	5	5.1
37	SDA	Audio control data	I/O	5	5	5.1
38	S_LED(NC)	No connection	-	-	-	-
39	NC	No connection	-	-	-	-
40	NC	No connection	-	-	-	-
41	LCD_DI	LCD driver data	O	0	0	0
42	LCD_DO	LCD driver data	I	5	5	5
43	LCD_CLK	LCD driver clock	O	0	0	0
44	LCD_CE	LCD driver chip enable	O	0	0	0
45	POW_LED	Power LED	O/I	0	0	0
46	ANT_CNT(NC)	No connection	-	-	-	-
47	ILL_CNT(NC)	No connection	-	-	-	-
48	NC	No connection	-	-	-	-
49	REM.IN_SUB	Remote control sub data	I	5	5	5
50	NC	No connection	-	-	-	-
51	NC	No connection	-	-	-	-
52	NC	No connection	-	-	-	-
53	NC	No connection	-	-	-	-
54	TEL MUTE	TEL mute	I	5	5	5
55	PANEL	PANEL in detection	I	4.8	4.8	4.8
56	CD_CNT	CD power control	O	0	0	5
57	PWR_CNT	Main power control	O	5	5	5.1
58	NC	No connection	-	-	-	-
59	RDS_DATA	RDS data input	I	2.8	0	2.8
60	RESET	System reset	I	5	5	5.1
61	REM_DATA	Remote control data	I	5	5	5

Pin No.	Port	Description	I/O	(V)		
				FM	AM	CD
62	CD_SW1	CD SW1 signal input	I	0	0	0
63	RDS_CLK	RDS clock input	I	2.6	2.5	2.6
64	CDC_STB	Changer strobe signal	I	0	0	0
65	ROT.1	Rotary encoder signal 1	I	5	5	5.1
66	ROT.2	Rotary encoder signal 2	I	5	5	5.1
67	VSS0	Ground	-	0	0	0
68	VDD1	+5V power supply	-	5	5	5.1
69	X2	Crystal oscillator	-	2.8	2.8	2.8
70	X1	Crystal oscillator	I	2.6	2.6	2.6
71	VPP	Vpp	-	0	0	0
72	XT2	SUB Crystal oscillator	-	2.8	2.8	2.8
73	XT1	SUB Crystal oscillator	I	2.5	2.5	2.5
74	VDD0	+5V power supply	-	5	5	5.1
75	AVREF	+5V power supply	-	5	5	5.1
76	VSM	FM/AM SD input	I	0.5	0.8	0
77	ACC	ACC detection	I	5.2	5.2	5.2
78	INIT_A	(+5V pull up)	I	5	5	5.1
79	NC	(Ground pull down)	I	0	0	0
80	NC	(Ground pull down)	I	0	0	0

10.2. Display Block

IC901 : YEAMLC75854T

Pin No.	Port	Description	I/O	(V)
1-35	S1-35	LCD segment data	O	2.5
36-39	NC	No connection	-	-
40-43	COM1-4	LCD common	O	2.5
44	KS1	Not used	-	-
45-49	KS2-6	Key scan	O	5
50-54	KI1-5	Key data	I	0
55	TEST	(Connecting to ground)	-	0
56	VDD	+5V power supply	-	5
57	VDD1	VDD1 filter terminal	-	3.3
58	VDD2	VDD2 filter terminal	-	1.7
59	VSS	Ground	-	0
60	OSC	Oscillator terminal	-	3.9
61	DO	Key data output	O	5
62	CE	LCD driver chip enable	I	0
63	CLK	LCD clock	I	4.9
64	DI	LCD data	I	4.9

10.3. CD Servo Block

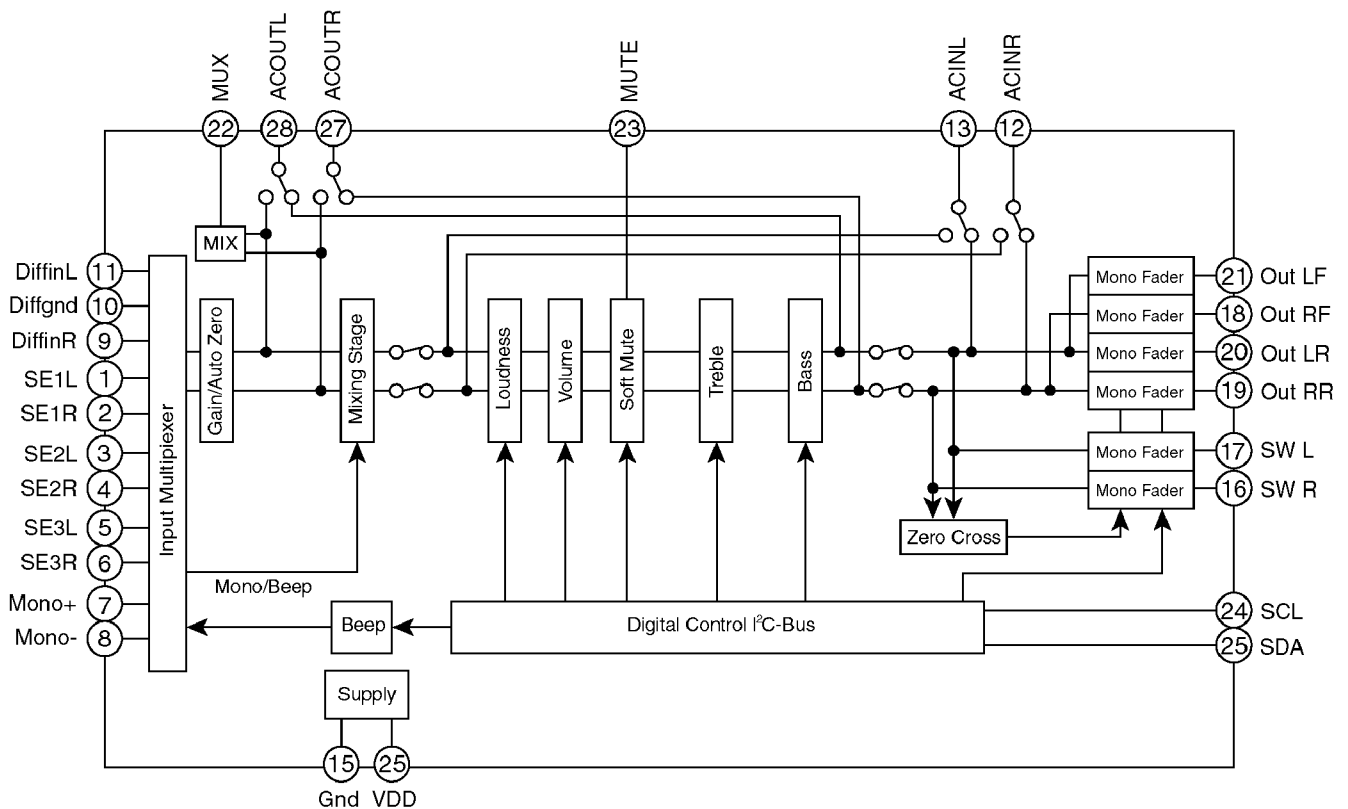
IC1 : C1BB00000665

Pin No.	Port	Description	I/O	(V)
1	D.GND	Digital Ground	-	0
2	RFOK	RFOK Signal	O	4.9
3	/RESET	Reset	I	4.9
4	A0	Address 0	I	4.0
5	/STB	Strobe	I	4.9
6	/SCK	Serial Clock	I	4.9
7	SO	Serial Data Output	O	0
8	SI	Serial Data Input	I	3.0
9	/XTALEN	Crystal Oscillation Enable	I	0
10	D.VDD	Digital Power Supply	-	4.9
11	DA.VDD	D/A Converter Power Supply	-	4.7
12	ROUT	R-channel Audio Signal Output	O	3.3
13	DA.GND	D/A Converter Ground	-	0
14	REGC	Capacitor Connection for Regulator	-	3.4
15	DA.GND	D/A Converter Ground	-	0
16	LOUT	L-channel Audio Signal Output	O	3.3
17	DA.VDD	D/A Converter Power Supply	-	4.6
18	R+(NC)	No connection	-	-
19	R-(NC)	No connection	-	-
20	L-(NC)	No connection	-	-
21	L+(NC)	No connection	-	-
22	X.VDD	Crystal Oscillator Power Supply	-	4.8
23	XTAL	Crystal Connection	O	2.3
24	/XTAL	Crystal Connection	I	2.1
25	X.GND	Crystal Oscillator Ground	-	0
26	D.VDD	Digital Power Supply	-	4.7
27	EMPH(NC)	No connection	-	-
28	FLAG(NC)	No connection	-	-
29	DIN	Data Input	I	2.5
30	DOUT	Data Output	O	2.5
31	SCKIN	Serial Clock Input	I	2.7
32	SCKO	Serial Clock Output	O	2.7
33	LRCKIN	LR Clock Input	I	2.5
34	LRCK	LR Clock	O	2.5
35	HOLD/WDC K(NC)	No connection	-	-
36	TX(NC)	No connection	-	-
37	D.GND	Digital Ground	-	0
38	C16M(NC)	No connection	-	-
39	LIMIT(NC)	No connection	-	-
40	D.VDD	Digital Power Supply	-	4.9
41	LOCK	Lock	O	4.9
42	RFCK(NC)	No connection	-	-
43	MIRR/WFC K(NC)	No connection	-	-
44	PLCK(NC)	No connection	-	-
45	D.GND	Digital Ground	-	0
46	C1D1(NC)	No connection	-	-
47	C1D2(NC)	No connection	-	-
48	C2D1(NC)	No connection	-	-
49	C2D2(NC)	No connection	-	-
50	C2D3(NC)	No connection	-	-
51	D.VDD	Digital Power Supply	-	4.9
52	PACK(NC)	No connection	-	-
53	TSO(NC)	No connection	-	-
54	TSI	Parameter Input for Text Data	I	0
55	/TSCK	Serial Clock for Text Data	I	0
56	TSTB	Text Parameter Strobe	I	0
57	D.GND	Digital Ground	-	0
58	TEST0	Test	I	0
59	TEST1	Test	I	0
60	ATEST	Analog Test	O	2.0
61	A.GND	Analog Ground	-	0
62	FD	Focus Drive	O	2.5

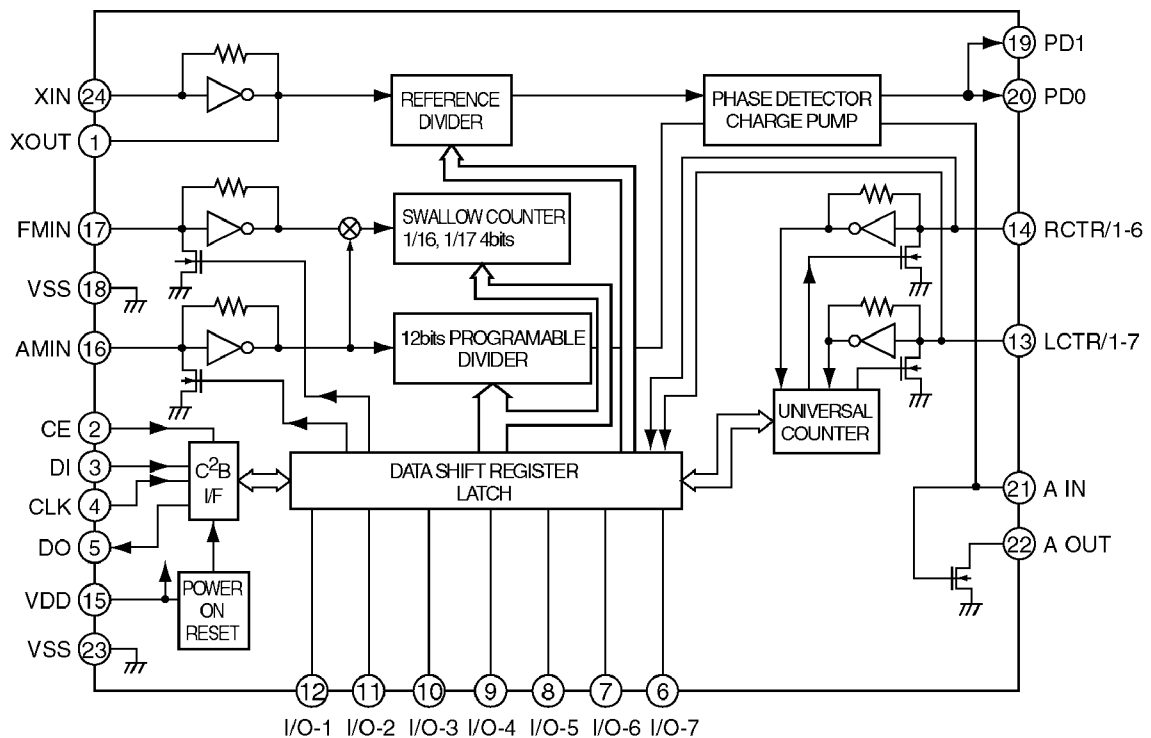
Pin No.	Port	Description	I/O	(V)
63	TD	Tracking Drive	O	2.5
64	SD	Sled Drive	O	2.6
65	MD	Motor Drive	O	2.5
66	DAC0(NC)	No connection	-	-
67	DAC1(NC)	No connection	-	-
68	DAC2(NC)	No connection	-	-
69	DAC3(NC)	No connection	-	-
70	A.VDD	Digital Power Supply	-	4.9
71	EFM	EFM Signal	O	2.7
72	ASY	Slice Level	I	2.4
73	C3T	Capacitance Connection for 3T Signal Detecting Circuit	-	2.7
74	RFI	RF Signal Input	I	2.4
75	AGCO	AGC Amp Output	O	2.4
76	AGCI	AGC Amp Input	I	2.4
77	RFO	RF Amp Output	O	2.7
78	EQ2	Equalizer Parts Connection for RF Amp	-	2.5
79	EQ1	Equalizer Parts Connection for RF Amp	-	0.3
80	RF-	Impedance Connection to RF Amp for Negative Feedback	I	2.3
81	A.GND	Analog Ground	-	0
82	A	Error Signal Input	I	2.7
83	C(NC)	No connection	-	-
84	B	Error Signal Input	I	2.7
85	D(NC)	No connection	-	-
86	F	Error Signal Input	I	2.9
87	E	Error Signal Input	I	2.9
88	A.VDD	Analog Power Supply	-	4.9
89	REFOUT	Reference Output	O	2.5
90	FE-	Impedance Connection to Focus Error Amp for Negative Feedback	I	2.5
91	FEO	Focus Error Amp Output	O	2.5
92	TE-	Impedance Connection to Tracking Error Amp for Negative Feedback	I	2.5
93	TEO	Tracking Error Amp Output	O	2.5
94	TE2	Tracking Error Amp Output Multiplied by Two	O	2.6
95	TEC	Tracking Error Comparator	I	2.5
96	A.GND	Analog Ground	-	0
97	PD	Photo Diode Signal (for Detecting Laser Power) Input	I	0.2
98	LD	Laser Diode Control Current Output	O	3.6
99	PN	APC Circuit Polarity Control	I	0
100	A.VDD	Analog Power Supply	-	4.9

11 PACKAGE AND IC BLOCK DIAGRAM

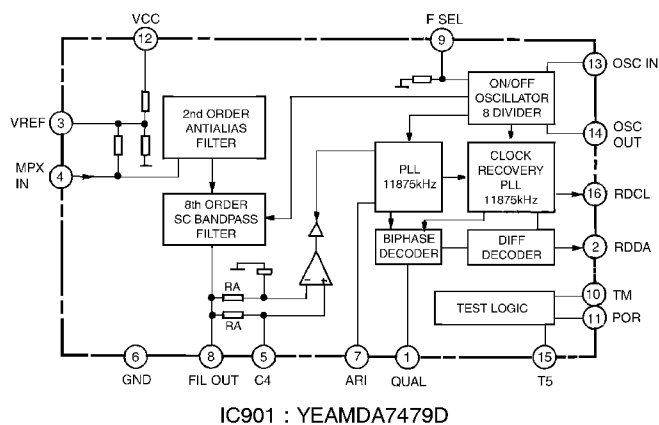
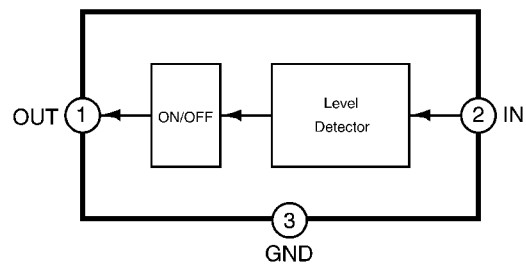
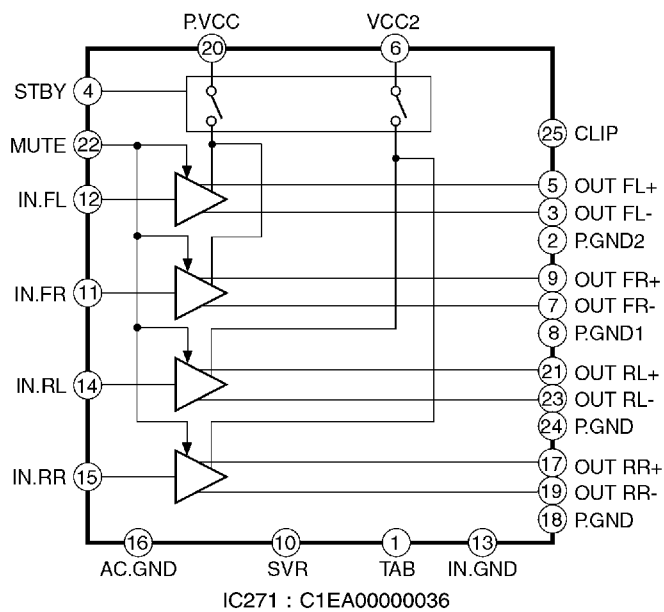
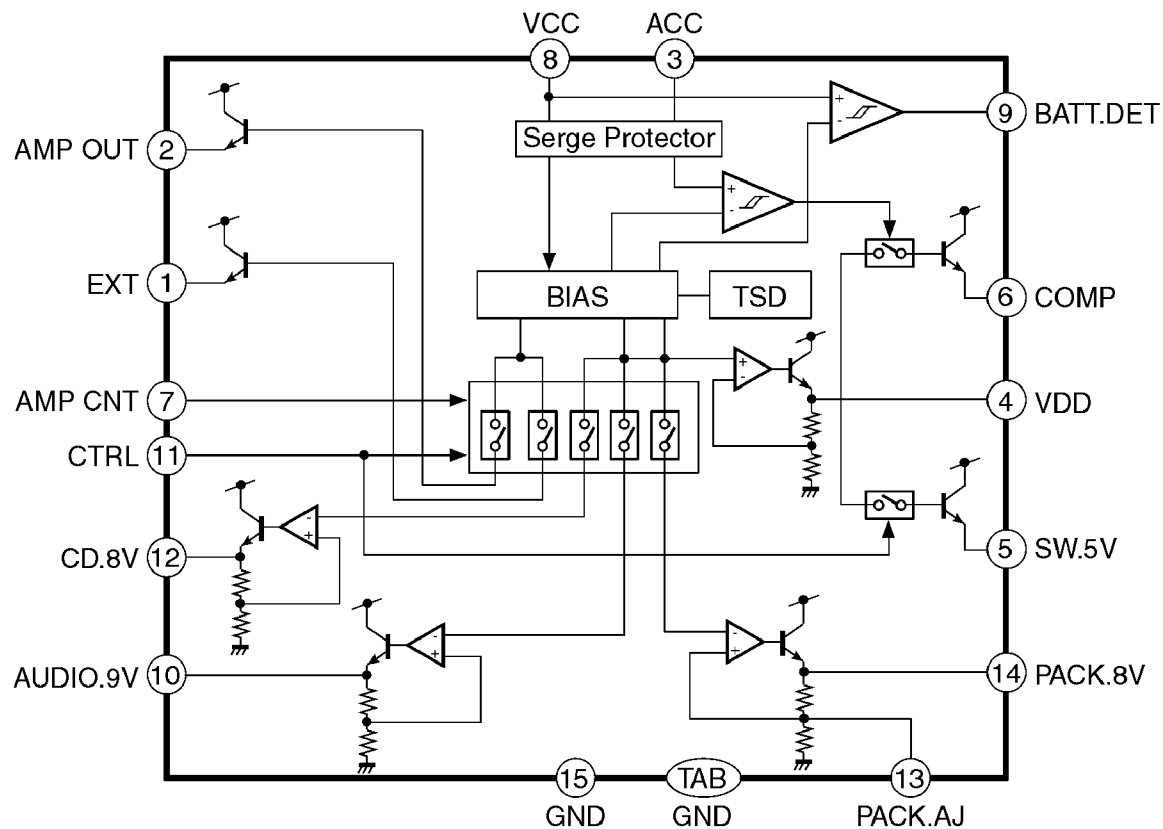
11.1. Main Block



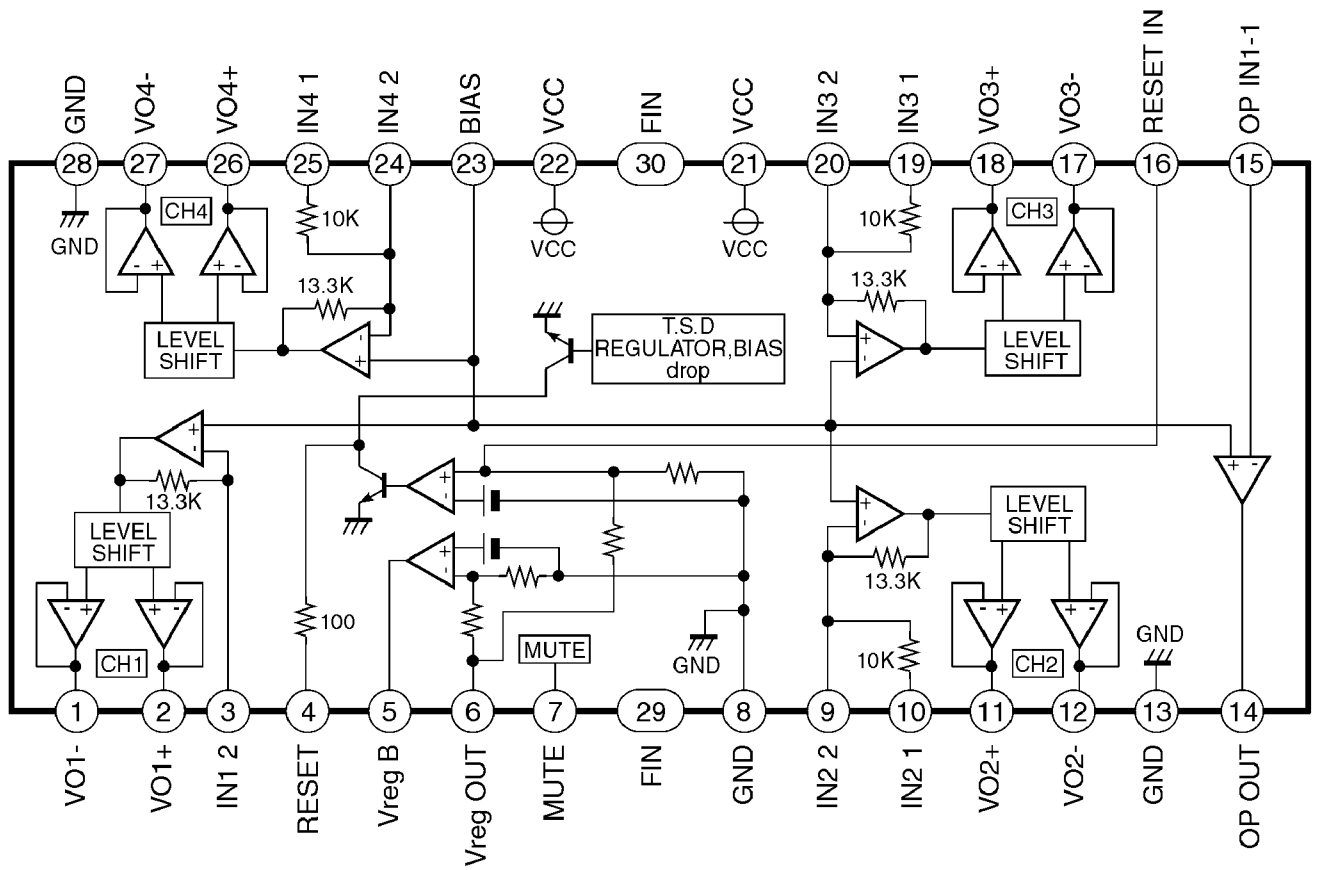
IC201 : C1BB00000543



IC401 : C1BB00000644



11.2. CD Servo Block



IC4 : C0GBY0000024

12 REPLACEMENT PARTS LIST

Notes :

1. Be sure to make your orders of replacement parts according to this list.
2. Important safety notice: Components, identified by Δ mark have special characteristics important for safety. When replacing any of these components, use only manufacturer's specified parts.
3. Location keys in the remarks column indicates the general location of the parts shown in the exploded drawing, as in a road map.
4. The marking (RTL) indicates that Retention Time is limited for this item. After the discontinuation of assembly in production, the item will continue to be available for a specific period of time. The retention period of availability is dependent on the type of assembly, and in accordance with the laws governing part and product retention. After the end of this period, the assembly will no longer be available.
 - Order intake period is basically six months after the first shipment.
5. "A" , "B", "C", "D" or "E" marks in remarks column are indicated as follows :
 - A : CQ-C1120AN
 - B : CQ-C1120GN
 - C : CQ-C1110AN
 - D : CQ-C1110GN
 - E : CQ-C1100VN

Ref. No.	Part No.	Part Name & Description	Remarks
[E6983] Main Block			
IC's AND TRANSISTORS			
IC201	C1BB00000543	IC	
IC271	C1EA00000036	IC	
IC401	C1BB00000644	IC	
IC601	C2CBHF000322	IC	
IC701	C0DAZHH00007	IC	
IC702	MN1382QTX	IC	
IC705	YEAMPC7805H	IC	
IC901	YEAMDA7479D	IC	
PA51	C5BA00000110	Electronic Tuner	
Q50	YEANFP1F3PT1	Transistor	
Q51	B1GBCFNN0004	Transistor	
Q52	B1GDCFNN0002	Transistor	
Q53	B1ABCF000044	Transistor	
Q60	B1AAEC000002	Transistor	
Q253	YEANC323TUTX	Transistor	
Q255	YEANC323TUTX	Transistor	
Q353	YEANC323TUTX	Transistor	
Q355	YEANC323TUTX	Transistor	
Q401	YEAN2SK536TB	Transistor	
Q660	B1GDCFJJ0002	Transistor	
Q661	B1GDCFJJ0002	Transistor	
Q702	B1BBAC000007	Transistor	
Q709	B1GDCFNN0002	Transistor	
Q710	B1GBCFCJ0005	Transistor	
Q711	YEAND1762EF	Transistor	
DIODES			
D270	YEADDSMID2T7	Diode	
D271	YEADDSMID2T7	Diode	
D272	YEADDSMID2T7	Diode	
D273	YEADDSMID2T7	Diode	

Ref. No.	Part No.	Part Name & Description	Remarks
D370	YEADDSMID2T7	Diode	
D371	YEADDSMID2T7	Diode	
D372	YEADDSMID2T7	Diode	
D373	YEADDSMID2T7	Diode	
D602	B0ADCJ000020	Diode	
D603	MA152WATX	Diode	
D608	MA721TX	Diode	
D652	MA8056LMHTX	Diode	
D653	MA8056LMHTX	Diode	
D654	MA8056LMHTX	Diode	
D701	YEADDSA3A2B	Diode	
D702	MA736TX	Diode	
D703	B0AACK000004	Diode	
D704	YEADRD56JS2	Diode	
D709	B0BA6R700008	Diode	
D716	B0AACK000004	Diode	
D718	MA723TA	Diode	
D719	YEADRD82JST1	Diode	
D720	YEADDSMID2T7	Diode	
D721	B0AACK000004	Diode	
CAPACITORS			
C51	F1J1H103A513	Ceramic, 0.01 μ F 50WV	
C52	F1J1H103A513	Ceramic, 0.01 μ F 50WV	
C53	ECEALAKS2221I	Electrolytic, 220 μ F 10WV	
C54	YECUS1H183KX	Ceramic, 0.018 μ F 50WV	
C55	YECUS1H183KX	Ceramic, 0.018 μ F 50WV	
C56	YECUS1H470JC	Ceramic, 47PF 50WV	
C57	F1J1H1020024	Ceramic, 1000PF 50WV	
C58	F1J1H471A672	Ceramic, 470PF 50WV	
C59	ECEALAKS3301I	Electrolytic, 33 μ F 10WV	
C201	F1J1H681A672	Ceramic, 680PF 50WV	
C202	F1J1H681A672	Ceramic, 680PF 50WV	
C203	F1J1C1050013	Ceramic, 1 μ F 16WV	
C205	F2A1H1R0A154	Electrolytic, 1 μ F 50WV	
C206	YECUS1C104KX	Ceramic, 0.1 μ F 16WV	
C207	F1J1A2250004	Ceramic, 2.2 μ F 10WV	
C208	F2A1H2R2A154	Electrolytic, 2.2 μ F 50WV	
C210	F2A1C100A150	Electrolytic, 10 μ F 16WV	
C211	YECUS1C104KX	Ceramic, 0.1 μ F 16WV	
C212	ECEALAKS2221I	Electrolytic, 220 μ F 10WV	
C251	F2A1E4R70028	Electrolytic, 4.7 μ F 25WV	
C252	F2A1E4R70028	Electrolytic, 4.7 μ F 25WV	
C261	F1J1E4740001	Ceramic, 0.47 μ F 25WV	
C271	F1J1E4740001	Ceramic, 0.47 μ F 25WV	
C272	F2A1C220A150	Electrolytic, 22 μ F 16WV	
C273	F2A1H1R0A154	Electrolytic, 1 μ F 50WV	
C274	YECUS1E104ZF	Ceramic, 0.1 μ F 25WV	
C275	F2A1C470A150	Electrolytic, 47 μ F 16WV	
C276	F1J1H122A675	Ceramic, 1200PF 50WV	
C277	F1J1H122A675	Ceramic, 1200PF 50WV	
C278	F1J1H122A675	Ceramic, 1200PF 50WV	
C279	F1J1H122A675	Ceramic, 1200PF 50WV	
C280	F2A1H2R2A154	Electrolytic, 2.2 μ F 50WV	
C281	ECA1CDT332Y	Electrolytic, 3300 μ F 16WV	
C282	YECUS1E104ZF	Ceramic, 0.1 μ F 25WV	
C301	F1J1H681A672	Ceramic, 680PF 50WV	
C302	F1J1H681A672	Ceramic, 680PF 50WV	
C303	F1J1C1050013	Ceramic, 1 μ F 16WV	
C305	F2A1H1R0A154	Electrolytic, 1 μ F 50WV	
C308	F2A1H2R2A154	Electrolytic, 2.2 μ F 50WV	
C351	F2A1E4R70028	Electrolytic, 4.7 μ F 25WV	
C352	F2A1E4R70028	Electrolytic, 4.7 μ F 25WV	
C361	F1J1E4740001	Ceramic, 0.47 μ F 25WV	
C371	F1J1E4740001	Ceramic, 0.47 μ F 25WV	
C401	F1J1H120A025	Ceramic, 12PF 50WV	
C402	F1J1H120A025	Ceramic, 12PF 50WV	
C403	F2A0J101A164	Electrolytic, 100 μ F 6.3WV	
C404	F1J1H103A513	Ceramic, 0.01 μ F 50WV	
C405	F1J1H101A672	Ceramic, 100PF 50WV	
C406	YECUS1H153KX	Ceramic, 0.015 μ F 50WV	
C407	ECQV1H104B46	Plastic Film, 0.1 μ F 50WV	

Ref. No.	Part No.	Part Name & Description	Remarks
C408	FLJ1H103A513	Ceramic, 0.01μF 50WV	
C409	ECBA1AKS221I	Electrolytic, 220μF 10WV	
C410	ECBA1AKS221I	Electrolytic, 220μF 10WV	
C411	ECBA1AKS221I	Electrolytic, 220μF 10WV	
C600	YECUS1C104KX	Ceramic, 0.1μF 16WV	
C601	FLJ1H103A513	Ceramic, 0.01μF 50WV	
C602	FLJ1H103A513	Ceramic, 0.01μF 50WV	
C603	YECUS1H220JC	Ceramic, 22PF 50WV	
C604	FLJ1H200A025	Ceramic, 20PF 50WV	
C605	FLJ1H120A025	Ceramic, 12PF 50WV	
C606	FLJ1H120A025	Ceramic, 12PF 50WV	
C607	YECUS1C104KX	Ceramic, 0.1μF 16WV	
C608	FLJ1H103A513	Ceramic, 0.01μF 50WV	
C609	F2A0J331A164	Electrolytic, 330μF 6.3WV	
C610	EECS0HD473H	Electrolytic, 0.047μF 5.5WV	
C612	FLJ1H103A513	Ceramic, 0.01μF 50WV	
C613	FLJ1H103A513	Ceramic, 0.01μF 50WV	
C614	FLJ1H103A513	Ceramic, 0.01μF 50WV	
C636	YECUV2A103KX	Ceramic, 0.01μF 100WV	
C655	YECUS1E104ZF	Ceramic, 0.1μF 25WV	
C656	YECUS1E104ZF	Ceramic, 0.1μF 25WV	
C660	F2A1H1R0A154	Electrolytic, 1μF 50WV	
C661	FLJ1H103A513	Ceramic, 0.01μF 50WV	
C700	ECA1CDT102BQ	Electrolytic, 1000μF 16WV	
C701	F2A1C101A150	Electrolytic, 100μF 16WV	
C702	F2A0J470A164	Electrolytic, 47μF 6.3WV	
C708	YECUS1E104ZF	Ceramic, 0.1μF 25WV	
C709	FLJ1H103A513	Ceramic, 0.01μF 50WV	
C717	YECUS1C224KX	Ceramic, 0.22μF 16WV	
C719	YECUS1C224KX	Ceramic, 0.22μF 16WV	
C720	F2A0J101A164	Electrolytic, 100μF 6.3WV	
C721	YECUS1C104KX	Ceramic, 0.1μF 16WV	
C722	YECUS1C104KX	Ceramic, 0.1μF 16WV	
C723	YECUS1C104KX	Ceramic, 0.1μF 16WV	
C724	YECUS1E104ZF	Ceramic, 0.1μF 25WV	
C725	EEAFCLA820H	Electrolytic, 82μF 10WV	
C726	YECUS1C104KX	Ceramic, 0.1μF 16WV	
C727	YECUS1C104KX	Ceramic, 0.1μF 16WV	
C728	YECUS1C104KX	Ceramic, 0.1μF 16WV	
C732	F2A1C470A150	Electrolytic, 47μF 16WV	
C901	YECUS1C104KX	Ceramic, 0.1μF 16WV	
C902	YECUS1H100CC	Ceramic, 10PF 50WV	
C903	YECUS1H100CC	Ceramic, 10PF 50WV	
C904	FLJ1H103A513	Ceramic, 0.01μF 50WV	
C905	F2A0J470A164	Electrolytic, 47μF 6.3WV	
C906	FLJ1H271A672	Ceramic, 270PF 50WV	
C907	F2A1C100A150	Electrolytic, 10μF 16WV	
J254	YECUV2A103KX	Ceramic, 0.01μF 100WV	
RESISTORS			
J107	ERJ6GEY0R00V	Chip, 0Ω 1/10W	
J108	ERJ6GEY0R00V	Chip, 0Ω 1/10W	
J111	ERJ6GEY0R00V	Chip, 0Ω 1/10W	
J112	ERJ6GEY0R00V	Chip, 0Ω 1/10W	
J113	ERJ6GEY0R00V	Chip, 0Ω 1/10W	
J114	ERJ6GEY0R00V	Chip, 0Ω 1/10W	
J118	ERJ6GEY0R00V	Chip, 0Ω 1/10W	
J120	ERJ6GEY0R00V	Chip, 0Ω 1/10W	
J129	ERJ6GEY0R00V	Chip, 0Ω 1/10W	
J130	ERJ6GEY0R00V	Chip, 0Ω 1/10W	
J131	ERJ6GEY0R00V	Chip, 0Ω 1/10W	
J132	ERJ6GEY0R00V	Chip, 0Ω 1/10W	
J133	ERJ6GEY0R00V	Chip, 0Ω 1/10W	
J200	ERJ8GX0R00V	Chip, 0Ω 1/8W	
J201	ERJ8GX0R00V	Chip, 0Ω 1/8W	
J202	ERJ8GX0R00V	Chip, 0Ω 1/8W	
J203	ERJ8GX0R00V	Chip, 0Ω 1/8W	
J204	ERJ8GX0R00V	Chip, 0Ω 1/8W	
J205	ERJ8GX0R00V	Chip, 0Ω 1/8W	
J207	ERJ8GX0R00V	Chip, 0Ω 1/8W	
J208	ERJ8GX0R00V	Chip, 0Ω 1/8W	
J209	ERJ8GX0R00V	Chip, 0Ω 1/8W	

Ref. No.	Part No.	Part Name & Description	Remarks
J218	ERJ8GX0R00V	Chip, 0Ω 1/8W	
J219	ERJ8GX0R00V	Chip, 0Ω 1/8W	
J220	ERJ8GX0R00V	Chip, 0Ω 1/8W	
J223	ERJ8GX0R00V	Chip, 0Ω 1/8W	
J225	ERJ8GX0R00V	Chip, 0Ω 1/8W	
J226	ERJ8GX0R00V	Chip, 0Ω 1/8W	
J227	ERJ8GX0R00V	Chip, 0Ω 1/8W	
J229	ERJ8GX0R00V	Chip, 0Ω 1/8W	
J230	ERJ8GX0R00V	Chip, 0Ω 1/8W	
J231	ERJ8GX0R00V	Chip, 0Ω 1/8W	
J232	ERJ8GX0R00V	Chip, 0Ω 1/8W	
J237	ERJ8GX0R00V	Chip, 0Ω 1/8W	
J238	ERJ8GX0R00V	Chip, 0Ω 1/8W	
J239	ERJ8GX0R00V	Chip, 0Ω 1/8W	
J240	ERJ8GX0R00V	Chip, 0Ω 1/8W	
J241	ERJ8GX0R00V	Chip, 0Ω 1/8W	
J247	ERJ8GX0R00V	Chip, 0Ω 1/8W	
J248	ERJ8GX0R00V	Chip, 0Ω 1/8W	
J250	ERJ8GX0R00V	Chip, 0Ω 1/8W	
J251	ERJ8GX0R00V	Chip, 0Ω 1/8W	
J252	ERJ8GX0R00V	Chip, 0Ω 1/8W	
J255	ERJ8GX0R00V	Chip, 0Ω 1/8W	
J256	ERJ8GX0R00V	Chip, 0Ω 1/8W	
J257	ERJ8GX0R00V	Chip, 0Ω 1/8W	
J258	ERJ8GX0R00V	Chip, 0Ω 1/8W	
J259	ERJ8GX0R00V	Chip, 0Ω 1/8W	
J260	ERJ8GX0R00V	Chip, 0Ω 1/8W	
J261	ERJ8GX0R00V	Chip, 0Ω 1/8W	
J262	ERJ8GX0R00V	Chip, 0Ω 1/8W	
J263	ERJ8GX0R00V	Chip, 0Ω 1/8W	
J264	ERJ8GX0R00V	Chip, 0Ω 1/8W	
J265	ERJ8GX0R00V	Chip, 0Ω 1/8W	
J266	ERJ8GX0R00V	Chip, 0Ω 1/8W	
J267	ERJ8GX0R00V	Chip, 0Ω 1/8W	
J268	ERJ8GX0R00V	Chip, 0Ω 1/8W	
J269	ERJ8GX0R00V	Chip, 0Ω 1/8W	
J271	ERJ8GX0R00V	Chip, 0Ω 1/8W	
J272	ERJ8GX0R00V	Chip, 0Ω 1/8W	
J274	ERJ8GX0R00V	Chip, 0Ω 1/8W	
J275	ERJ8GX0R00V	Chip, 0Ω 1/8W	
R50	ERJ6GEYJ5R6V	Chip, 5.6Ω 1/10W	
R51	ERJ6GEY0R00V	Chip, 0Ω 1/10W	
R52	ERJ8GEYJ101V	Chip, 100Ω 1/8W	
R53	ERJ6GEYJ471	Chip, 470Ω 1/10W	
R55	ERJ6GEYJ393	Chip, 39kΩ 1/10W	
R56	ERJ6GEYJ334	Chip, 330kΩ 1/10W	
R57	ERJ6GEYJ222	Chip, 2.2kΩ 1/10W	
R58	ERJ6GEYJ102	Chip, 1kΩ 1/10W	
R60	ERJ6GEYJ102	Chip, 1kΩ 1/10W	
R200	ERJ6GEYJ363V	Chip, 36kΩ 1/10W	
R203	ERJ6GEYJ272	Chip, 2.7kΩ 1/10W	
R204	ERJ6GEYJ272	Chip, 2.7kΩ 1/10W	
R251	ERJ6GEYJ101	Chip, 100Ω 1/10W	
R252	ERJ6GEYJ101	Chip, 100Ω 1/10W	
R253	ERJ6GEYJ472	Chip, 4.7kΩ 1/10W	
R255	ERJ6GEYJ472	Chip, 4.7kΩ 1/10W	
R256	ERJ6GEYJ101	Chip, 100Ω 1/10W	
R300	ERJ6GEYJ363V	Chip, 36kΩ 1/10W	
R303	ERJ6GEYJ272	Chip, 2.7kΩ 1/10W	
R304	ERJ6GEYJ272	Chip, 2.7kΩ 1/10W	
R351	ERJ6GEYJ101	Chip, 100Ω 1/10W	
R352	ERJ6GEYJ101	Chip, 100Ω 1/10W	
R353	ERJ6GEYJ472	Chip, 4.7kΩ 1/10W	
R355	ERJ6GEYJ472	Chip, 4.7kΩ 1/10W	
R356	ERJ6GEYJ101	Chip, 100Ω 1/10W	
R401	ERJ6GEYJ152	Chip, 1.5kΩ 1/10W	
R402	ERJ6GEYJ473	Chip, 47kΩ 1/10W	
R403	ERJ6GEYJ473	Chip, 47kΩ 1/10W	
R404	ERJ6GEYJ222	Chip, 2.2kΩ 1/10W	
R405	ERJ6GEYJ182	Chip, 1.8kΩ 1/10W	
R406	ERJ8GEYJ561V	Chip, 560Ω 1/8W	
R411	ERJ8GEYJ100V	Chip, 10Ω 1/8W	
R412	ERJ6GEYJ104	Chip, 100kΩ 1/10W	

Ref. No.	Part No.	Part Name & Description	Remarks
R600	ERJ6GEYJ473	Chip, 47k Ω 1/10W	
R607	ERJ6GEYJ102	Chip, 1k Ω 1/10W	
R608	ERJ6GEYJ153	Chip, 15k Ω 1/10W	
R609	ERJ6GEY0R00V	Chip, 0 Ω 1/10W	
R611	ERJ6GEYJ122	Chip, 1.2k Ω 1/10W	
R612	ERD25TJ102T	Carbon, 1k Ω 1/4W	
R613	ERJ6GEYJ102	Chip, 1k Ω 1/10W	
R614	ERD25TJ102T	Carbon, 1k Ω 1/4W	
R615	ERD25TJ102T	Carbon, 1k Ω 1/4W	
R616	ERJ6GEYJ222	Chip, 2.2k Ω 1/10W	
R617	ERJ8GEYJ473V	Chip, 47k Ω 1/8W	
R618	ERJ6GEYJ471	Chip, 470 Ω 1/10W	
R619	ERDS2FJ100T	Carbon, 10 Ω 1/4W	
R620	ERJ6GEYJ103	Chip, 10k Ω 1/10W	
R623	ERJ6GEYJ102	Chip, 1k Ω 1/10W	
R625	ERJ6GEYJ102	Chip, 1k Ω 1/10W	
R626	ERJ6GEYJ102	Chip, 1k Ω 1/10W	
R627	ERJ6GEYJ102	Chip, 1k Ω 1/10W	
R628	ERJ6GEYJ102	Chip, 1k Ω 1/10W	
R629	ERJ6GEYJ102	Chip, 1k Ω 1/10W	
R631	ERJ6GEYJ184	Chip, 180k Ω 1/10W	
R633	ERJ6GEYJ102	Chip, 1k Ω 1/10W	
R634	ERJ6GEYJ102	Chip, 1k Ω 1/10W	
R635	ERJ8GEYJ102V	Chip, 1k Ω 1/8W	
R636	ERJ6GEYJ103	Chip, 10k Ω 1/10W	
R637	ERJ6GEYJ103	Chip, 10k Ω 1/10W	
R640	ERJ6GEYJ822	Chip, 8.2k Ω 1/10W	
R641	ERJ6GEYJ333	Chip, 33k Ω 1/10W	
R642	ERJ6GEYJ473	Chip, 47k Ω 1/10W	
R643	ERJ6GEYJ473	Chip, 47k Ω 1/10W	
R644	ERJ6GEYJ473	Chip, 47k Ω 1/10W	
R650	ERJ6GEY0R00V	Chip, 0 Ω 1/10W	
R660	ERJ6GEYJ472	Chip, 4.7k Ω 1/10W	
R661	ERJ6GEYJ393	Chip, 39k Ω 1/10W	
R662	ERJ6GEYJ682	Chip, 6.8k Ω 1/10W	
R663	ERJ6GEYJ223	Chip, 22k Ω 1/10W	
R664	ERJ6GEY0R00V	Chip, 0 Ω 1/10W	
R666	ERJ6GEYJ102	Chip, 1k Ω 1/10W	
R667	ERJ6GEY0R00V	Chip, 0 Ω 1/10W	
R668	ERJ6GEY0R00V	Chip, 0 Ω 1/10W	
R669	ERJ6GEY0R00V	Chip, 0 Ω 1/10W	
R670	ERJ6GEYJ154	Chip, 150k Ω 1/10W	
R671	ERJ6GEYJ472	Chip, 4.7k Ω 1/10W	
R672	ERD25TJ821T	Carbon, 820 Ω 1/4W	
R680	ERJ6GEYJ824	Chip, 820k Ω 1/10W	
R681	ERJ6GEYJ472	Chip, 4.7k Ω 1/10W	
R682	ERJ6GEYJ152	Chip, 1.5k Ω 1/10W	
R683	ERJ8GEYJ473V	Chip, 47k Ω 1/8W	
R684	ERJ6GEYJ103	Chip, 10k Ω 1/10W	
R685	ERJ6GEYJ103	Chip, 10k Ω 1/10W	
R686	ERJ6GEYJ473	Chip, 47k Ω 1/10W	
R687	ERJ6GEYJ103	Chip, 10k Ω 1/10W	
R688	ERJ6GEYJ103	Chip, 10k Ω 1/10W	
R689	ERJ6GEYJ183	Chip, 18k Ω 1/10W	
R702	ERJ8GEYJ4R7V	Chip, 4.7 Ω 1/8W	
R703	ERJ6GEYJ682	Chip, 6.8k Ω 1/10W	
R704	ERJ6GEYJ393	Chip, 39k Ω 1/10W	
R705	ERJ6GEYJ822	Chip, 8.2k Ω 1/10W	
R709	ERD25TJ123T	Carbon, 12k Ω 1/4W	
R710	ERJ6GEYJ113V	Chip, 11k Ω 1/10W	
R712	ERJ6GEYJ223	Chip, 22k Ω 1/10W	
R713	ERJ6GEYJ124	Chip, 120k Ω 1/10W	
R714	ERJ6GEYJ473	Chip, 47k Ω 1/10W	
R715	ERJ6GEYJ473	Chip, 47k Ω 1/10W	
R716	ERDS2FJ1R0T	Carbon, 1 Ω 1/4W	
R717	ERDS2FJ3R3T	Carbon, 3.3 Ω 1/4W	
R718	ERDS2TJ271T	Carbon, 270 Ω 1/4W	
R719	ERJ6GEY0R00V	Chip, 0 Ω 1/10W	
R721	ERJ6GEYJ223	Chip, 22k Ω 1/10W	
R901	ERJ6GEYJ225V	Chip, 2.2M Ω 1/10W	
R902	ERJ8GEYJ103V	Chip, 10k Ω 1/8W	
R903	ERJ6GEYJ103	Chip, 10k Ω 1/10W	

Ref. No.	Part No.	Part Name & Description	Remarks
CONNECTORS			
CN301	K2HA102B0061	Jack, 3P	
CN601	YEA012475	Connector, 12P	
CN620	YEAETKCW22PS	Connector, 22P	
CN701	K1FA116B0028	Connector, 16P	
COILS			
L50	RLQZP150KT-Y	RF Coil	
L51	G0CR56KA0029	RF Coil	
L401	YELT02C101KT	Coil	
L701	YETQ026F143	Coil	
L702	YELT02C330KT	Coil	
L901	YELT02C330KT	Coil	
CRYSTALS			
XL401	H0D720400006	Crystal Oscillator	
XL601	H0D125500006	Crystal Oscillator	
XL602	H0A327200080	Crystal Oscillator	
XL901	H0D433400003	Crystal Oscillator	
LAMP			
Z50	YEAL02010T	Lamp	
VARISTOR			
Z715	ERZV07D470	Varistor	
[E9408] Display Block			
IC's AND TRANSISTORS			
IC901	YEAMLC75854T	IC	
Q901	B1GDCFJJ0002	Transistor	
DIODES			
D901	MA8056LMHTX	Diode	
D902	MA8056LMHTX	Diode	
D903	MA8056LMHTX	Diode	
D904	MA8056LMHTX	Diode	
D905	MA8056LMHTX	Diode	
D909	B3ACB0000100	Diode	A,C
D909	B3ABB0000162	Diode	B,D
D909	B3AEB0000025	Diode	E
D911	B3AEB0000025	Diode	E
D912	B3AEB0000025	Diode	E
D913	B3ADB0000043	Diode	A,C
D913	B3ABB0000161	Diode	B,D
D913	B3AAB0000143	Diode	E
D914	B3ADB0000043	Diode	A,C
D914	B3ABB0000161	Diode	B,D
D914	B3AAB0000143	Diode	E
D915	B3ADB0000043	Diode	A,C
D915	B3ABB0000161	Diode	B,D
D915	B3AAB0000143	Diode	E
D916	B3ADB0000043	Diode	A,C
D916	B3ABB0000161	Diode	B,D
D916	B3AAB0000143	Diode	E
D917	B3ADB0000043	Diode	A,C
D917	B3ABB0000161	Diode	B,D
D917	B3AAB0000143	Diode	E
D918	B3ADB0000043	Diode	A,C
D918	B3ABB0000161	Diode	B,D
D918	B3AAB0000143	Diode	E
D919	B3ADB0000043	Diode	A,C
D919	B3ABB0000161	Diode	B,D
D919	B3AAB0000143	Diode	E
D920	B3ADB0000043	Diode	A,C
D920	B3ABB0000160	Diode	B,D

Ref. No.	Part No.	Part Name & Description	Remarks
D920	B3AAB0000143	Diode	E
D921	B3ADB0000043	Diode	A, C
D921	B3ABB0000161	Diode	B, D
D921	B3AAB0000143	Diode	E
D922	B3ADB0000043	Diode	A, C
D922	B3ABB0000161	Diode	B, D
D922	B3AAB0000143	Diode	E
D923	B3ADB0000043	Diode	A, C
D923	B3ABB0000160	Diode	B, D
D923	B3AAB0000143	Diode	E
D924	B3ADB0000043	Diode	A, C
D924	B3ABB0000161	Diode	B, D
D924	B3AAB0000143	Diode	E
D925	B3ADB0000043	Diode	A, C
D925	B3ABB0000160	Diode	B, D
D925	B3AAB0000143	Diode	E
D926	B3ADB0000043	Diode	A, C
D926	B3ABB0000161	Diode	B, D
D926	B3AAB0000143	Diode	E
D927	B3ADB0000043	Diode	A, C
D927	B3ABB0000161	Diode	B, D
D927	B3AAB0000143	Diode	E
D928	B3ADB0000043	Diode	A, C
D928	B3ABB0000160	Diode	B, D
D928	B3AAB0000143	Diode	E
D930	B3AAB0000143	Diode	
CAPACITORS			
C901	YECUS1E104ZF	Ceramic, 0.1 μ F 25WV	
C902	YECUS1E104ZF	Ceramic, 0.1 μ F 25WV	
C903	YECUS1H681JC	Ceramic, 680PF 50WV	
C904	YECUS1E104ZF	Ceramic, 0.1 μ F 25WV	
C907	YECUS1E104ZF	Ceramic, 0.1 μ F 25WV	
RESISTORS			
R901	ERJ6GEY0R00V	Chip, 0 Ω 1/10W	
R902	ERJ6GEYJ473	Chip, 47k Ω 1/10W	
R903	ERJ6GEYJ102	Chip, 1k Ω 1/10W	
R904	ERJ6GEYJ1R0V	Chip, 1 Ω 1/10W	
R906	ERJ6GEYJ102	Chip, 1k Ω 1/10W	
R907	ERJ6GEYJ102	Chip, 1k Ω 1/10W	
R908	ERJ6GEYJ102	Chip, 1k Ω 1/10W	
R909	ERJ6GEYJ102	Chip, 1k Ω 1/10W	
R910	ERJ6GEYJ103	Chip, 10k Ω 1/10W	
R911	ERJ6GEYJ681	Chip, 680 Ω 1/10W	
R920	ERJ8GEYJ391V	Chip, 390 Ω 1/8W	B, D
R920	ERJ8GEYJ181V	Chip, 390 Ω 1/8W	E
R921	ERJ8GEYJ221V	Chip, 220 Ω 1/8W	A, C
R921	ERJ8GEYJ751V	Chip, 750 Ω 1/8W	B, D
R921	ERJ8GEYJ471V	Chip, 470 Ω 1/8W	E
R923	ERJ6GEYJ560	Chip, 56 Ω 1/10W	A, C
R923	ERJ6GEYJ680	Chip, 68 Ω 1/10W	B, D
R923	ERJ6GEYJ471	Chip, 470 Ω 1/10W	E
R924	ERJ6GEYJ560	Chip, 56 Ω 1/10W	A, C
R924	ERJ6GEYJ680	Chip, 68 Ω 1/10W	B, D
R924	ERJ6GEYJ391	Chip, 390 Ω 1/10W	E
R925	ERJ6GEYJ560	Chip, 56 Ω 1/10W	A, C
R925	ERJ6GEYJ680	Chip, 68 Ω 1/10W	B, D
R925	ERJ6GEYJ391	Chip, 390 Ω 1/10W	E
R927	ERJ6GEYJ151	Chip, 150 Ω 1/10W	A, B, C, D
R927	ERJ6GEYJ122	Chip, 1.2k Ω 1/10W	E
R928	ERJ6GEYJ560	Chip, 56 Ω 1/10W	A, C
R928	ERJ6GEYJ680	Chip, 68 Ω 1/10W	B, D
R928	ERJ6GEYJ621V	Chip, 620 Ω 1/10W	E
R929	ERJ6GEYJ151	Chip, 150 Ω 1/10W	A, B, C, D
R929	ERJ6GEYJ621V	Chip, 620 Ω 1/10W	E
CONNECTOR			
CJ601	YEAE012476	Connector, 12P	

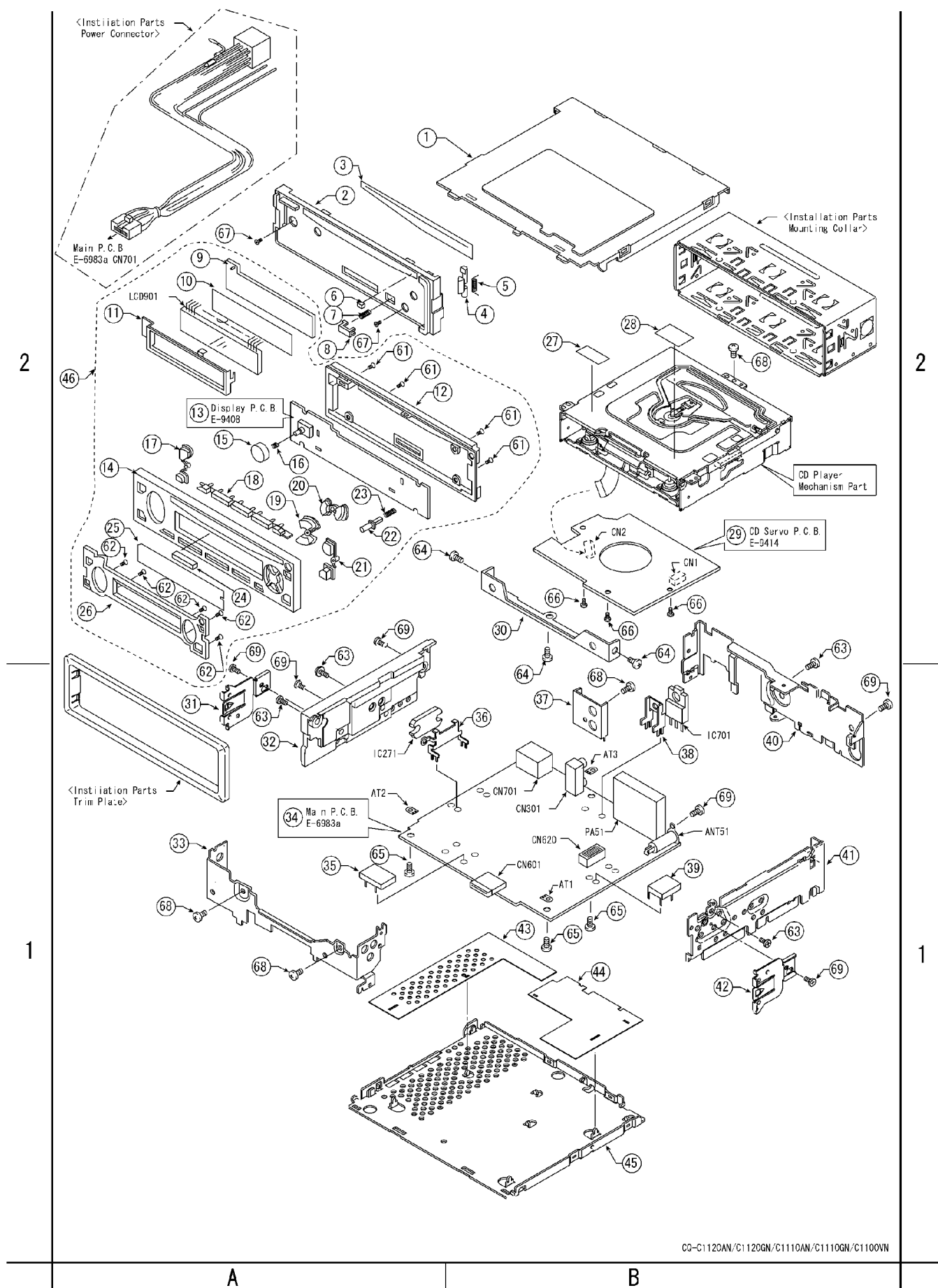
Ref. No.	Part No.	Part Name & Description	Remarks
SWITCHes			
SW901	K9AA024A0007	Switch	
SW902	K0H1BA000445	Switch	
SW903	K0H1BA000445	Switch	
SW904	K0H1BA000445	Switch	
SW905	K0H1BA000445	Switch	
SW906	K0H1BA000445	Switch	
SW907	K0H1BA000445	Switch	
SW908	K0H1BA000445	Switch	
SW909	K0H1BA000445	Switch	
SW910	K0H1BA000445	Switch	
SW911	K0H1BA000445	Switch	
SW912	K0H1BA000445	Switch	
SW913	K0H1BA000445	Switch	
SW914	K0H1BA000445	Switch	
SW915	K0H1BA000445	Switch	
SW916	K0H1BA000445	Switch	
SW917	K0H1BA000445	Switch	
LCD			
LCD901	L5ACBJB00005	LCD	A, B, C, D
LCD901	L5ACBJB00006	LCD	E
[E9414] CD Servo Block			
IC's AND TRANSISTORS			
IC1	C1BB00000665	IC	
IC4	C0GBY0000024	IC	
Q2	2SB766ATX	Transistor	
DIODE			
D2	YEADAN202UTX	Diode	
CAPACITORS			
C3	F1H1H8R0A226	Ceramic, 8PF 50WV	
C4	YECUZ1H270JC	Ceramic, 27PF 50WV	
C5	YECUZ1H040CC	Ceramic, 4PF 50WV	
C6	F1H1H104A783	Ceramic, 0.1 μ F 50WV	
C7	F1H1H104A783	Ceramic, 0.1 μ F 50WV	
C8	YECUZ1H472KX	Ceramic, 4700PF 50WV	
C9	F1H1H104A783	Ceramic, 0.1 μ F 50WV	
C10	F1H1H104A783	Ceramic, 0.1 μ F 50WV	
C11	F1H1H104A783	Ceramic, 0.1 μ F 50WV	
C12	F1H1H104A783	Ceramic, 0.1 μ F 50WV	
C16	YECUS1C104KX	Ceramic, 0.1 μ F 16WV	
C17	F1H1H104A783	Ceramic, 0.1 μ F 50WV	
C19	F1H1H104A783	Ceramic, 0.1 μ F 50WV	
C20	F1H1H103A783	Ceramic, 0.01 μ F 50WV	
C21	F1H1H103A783	Ceramic, 0.01 μ F 50WV	
C24	ECEV1CA100SR	Electrolytic, 10 μ F 16WV	
C25	YECUZ1E223KX	Ceramic, 0.022 μ F 25WV	
C26	F1H1H2220004	Ceramic, 2200PF 50WV	
C27	F1H1H2220004	Ceramic, 2200PF 50WV	
C28	YECUZ1H270JC	Ceramic, 27PF 50WV	
C30	YECUZ1H560JC	Ceramic, 56PF 50WV	
C31	YECUZ1H270JC	Ceramic, 27PF 50WV	
C32	ECEV1CA100SR	Electrolytic, 10 μ F 16WV	
C34	YECUS1C104KX	Ceramic, 0.1 μ F 16WV	
C35	ECEV1CA100SR	Electrolytic, 10 μ F 16WV	
C38	ECEV1AA101SP	Electrolytic, 100 μ F 10WV	
C39	ECEV1CA100SR	Electrolytic, 10 μ F 16WV	
C40	ECEV1AA101SP	Electrolytic, 100 μ F 10WV	
C45	YECUS1C104KX	Ceramic, 0.1 μ F 16WV	
C46	ECEV1AA101SP	Electrolytic, 100 μ F 10WV	
C51	F1J1H103A513	Ceramic, 0.01 μ F 50WV	
C52	F1H1H103A783	Ceramic, 0.01 μ F 50WV	
C53	F1J1H103A513	Ceramic, 0.01 μ F 50WV	
C60	YECUS1C104KX	Ceramic, 0.1 μ F 16WV	

Ref. No.	Part No.	Part Name & Description	Remarks
RESISTORS			
J101	ERJ8GEY0R00V	Chip, 0Ω 1/8W	
J102	ERJ8GEY0R00V	Chip, 0Ω 1/8W	
J103	ERJ8GEY0R00V	Chip, 0Ω 1/8W	
J104	ERJ8GEY0R00V	Chip, 0Ω 1/8W	
J106	ERJ8GEY0R00V	Chip, 0Ω 1/8W	
J107	ERJ8GEY0R00V	Chip, 0Ω 1/8W	
J108	ERJ8GEY0R00V	Chip, 0Ω 1/8W	
J109	ERJ8GEY0R00V	Chip, 0Ω 1/8W	
J110	ERJ8GEY0R00V	Chip, 0Ω 1/8W	
J111	ERJ8GEY0R00V	Chip, 0Ω 1/8W	
J112	ERJ8GEY0R00V	Chip, 0Ω 1/8W	
J113	ERJ8GEY0R00V	Chip, 0Ω 1/8W	
J114	ERJ8GEY0R00V	Chip, 0Ω 1/8W	
J115	ERJ8GEY0R00V	Chip, 0Ω 1/8W	
J116	ERJ8GEY0R00V	Chip, 0Ω 1/8W	
J117	ERJ8GEY0R00V	Chip, 0Ω 1/8W	
J118	ERJ8GEY0R00V	Chip, 0Ω 1/8W	
J119	ERJ8GEY0R00V	Chip, 0Ω 1/8W	
J120	ERJ8GEY0R00V	Chip, 0Ω 1/8W	
J121	ERJ8GEY0R00V	Chip, 0Ω 1/8W	
J122	ERJ8GEY0R00V	Chip, 0Ω 1/8W	
J123	ERJ8GEY0R00V	Chip, 0Ω 1/8W	
J124	ERJ8GEY0R00V	Chip, 0Ω 1/8W	
J125	ERJ8GEY0R00V	Chip, 0Ω 1/8W	
J126	ERJ8GEY0R00V	Chip, 0Ω 1/8W	
J127	ERJ8GEY0R00V	Chip, 0Ω 1/8W	
J128	ERJ8GEY0R00V	Chip, 0Ω 1/8W	
J129	ERJ8GEY0R00V	Chip, 0Ω 1/8W	
J130	ERJ8GEY0R00V	Chip, 0Ω 1/8W	
J131	ERJ8GEY0R00V	Chip, 0Ω 1/8W	
J132	ERJ8GEY0R00V	Chip, 0Ω 1/8W	
J133	ERJ8GEY0R00V	Chip, 0Ω 1/8W	
J134	ERJ8GEY0R00V	Chip, 0Ω 1/8W	
J135	ERJ8GEY0R00V	Chip, 0Ω 1/8W	
J136	ERJ8GEY0R00V	Chip, 0Ω 1/8W	
J137	ERJ8GEY0R00V	Chip, 0Ω 1/8W	
J138	ERJ8GEY0R00V	Chip, 0Ω 1/8W	
J139	ERJ8GEY0R00V	Chip, 0Ω 1/8W	
J140	ERJ8GEY0R00V	Chip, 0Ω 1/8W	
J142	ERJ8GEY0R00V	Chip, 0Ω 1/8W	
J143	ERJ8GEY0R00V	Chip, 0Ω 1/8W	
J144	ERJ8GEY0R00V	Chip, 0Ω 1/8W	
J145	ERJ8GEY0R00V	Chip, 0Ω 1/8W	
J146	ERJ8GEY0R00V	Chip, 0Ω 1/8W	
J147	ERJ8GEY0R00V	Chip, 0Ω 1/8W	
J148	ERJ8GEY0R00V	Chip, 0Ω 1/8W	
J149	ERJ8GEY0R00V	Chip, 0Ω 1/8W	
J150	ERJ8GEY0R00V	Chip, 0Ω 1/8W	
J151	ERJ8GEY0R00V	Chip, 0Ω 1/8W	
J152	ERJ8GEY0R00V	Chip, 0Ω 1/8W	
J153	ERJ8GEY0R00V	Chip, 0Ω 1/8W	
J154	ERJ8GEY0R00V	Chip, 0Ω 1/8W	
J155	ERJ8GEY0R00V	Chip, 0Ω 1/8W	
J156	ERJ8GEY0R00V	Chip, 0Ω 1/8W	
J157	ERJ8GEY0R00V	Chip, 0Ω 1/8W	
J158	ERJ8GEY0R00V	Chip, 0Ω 1/8W	
J159	ERJ8GEY0R00V	Chip, 0Ω 1/8W	
J160	ERJ8GEY0R00V	Chip, 0Ω 1/8W	
J161	ERJ8GEY0R00V	Chip, 0Ω 1/8W	
J162	ERJ8GEY0R00V	Chip, 0Ω 1/8W	
J163	ERJ8GEY0R00V	Chip, 0Ω 1/8W	
J164	ERJ8GEY0R00V	Chip, 0Ω 1/8W	
J165	ERJ8GEY0R00V	Chip, 0Ω 1/8W	
J166	ERJ8GEY0R00V	Chip, 0Ω 1/8W	
J177	ERJ8GEY0R00V	Chip, 0Ω 1/8W	
J183	ERJ8GEY0R00V	Chip, 0Ω 1/8W	
J184	ERJ8GEY0R00V	Chip, 0Ω 1/8W	
J185	ERJ8GEY0R00V	Chip, 0Ω 1/8W	
J186	ERJ8GEY0R00V	Chip, 0Ω 1/8W	
R1	ERJ3GEYJ103V	Chip, 10kΩ 1/16W	

Ref. No.	Part No.	Part Name & Description	Remarks
R2	ERJ3GEYJ103V	Chip, 10kΩ 1/16W	
R8	ERJ6GEYJ222	Chip, 2.2kΩ 1/10W	
R10	ERJ3GEYJ392V	Chip, 3.9kΩ 1/16W	
R12	ERJ3GEYJ222V	Chip, 2.2kΩ 1/16W	
R13	ERJ3GEYJ392V	Chip, 3.9kΩ 1/16W	
R14	ERJ3GEYJ103V	Chip, 10kΩ 1/16W	
R20	ERJ3GEYJ473V	Chip, 47kΩ 1/16W	
R21	ERJ3GEYJ221V	Chip, 220Ω 1/16W	
R22	ERJ3GEYJ221V	Chip, 220Ω 1/16W	
R27	ERJ3GEYJ393V	Chip, 39kΩ 1/16W	
R28	ERJ8GEYJ104V	Chip, 100kΩ 1/8W	
R30	ERJ3GEYJ220V	Chip, 22Ω 1/16W	
R34	ERJ3GEYJ184V	Chip, 180kΩ 1/16W	
R37	ERJ3GEY0R00V	Chip, 0Ω 1/16W	
R39	ERJ3GEY0R00V	Chip, 0Ω 1/16W	
R40	ERJ3GEY0R00V	Chip, 0Ω 1/16W	
R41	ERJ3GEYJ104V	Chip, 100kΩ 1/16W	
R46	ERJ3GEYJ472V	Chip, 4.7kΩ 1/16W	
R47	ERJ8GEYJ473V	Chip, 47kΩ 1/8W	
R48	ERJ3GEYJ473V	Chip, 47kΩ 1/16W	
R51	ERJ6GEYJ102	Chip, 1kΩ 1/10W	
R52	ERJ6GEYJ102	Chip, 1kΩ 1/10W	
R53	ERJ3GEYJ102V	Chip, 1kΩ 1/16W	
R54	ERJ3GEYJ102V	Chip, 1kΩ 1/16W	
R55	ERJ3GEYJ102V	Chip, 1kΩ 1/16W	
R56	ERJ3GEYJ101V	Chip, 100Ω 1/16W	
R57	ERJ3GEYJ102V	Chip, 1kΩ 1/16W	
R58	ERJ3GEYJ102V	Chip, 1kΩ 1/16W	
R59	ERJ3GEYJ102V	Chip, 1kΩ 1/16W	
R60	ERJ3GEYJ102V	Chip, 1kΩ 1/16W	
R61	ERJ6GEYJ102	Chip, 1kΩ 1/10W	
R62	ERJ8GEYJ102V	Chip, 1kΩ 1/8W	
R63	ERJ8GEY0R00V	Chip, 0Ω 1/8W	
CONNECTORS			
CN1	YEA0122TKCR	Connector, 22P	
CN2	K1MN16B00036	Connector, 16P	
COIL			
L1	YELT03N101JT	Coil	
CRYSTAL			
X1	H2D169500017	Ceramic Oscillator	
Accessories			
PRINTING			
	YEP0PR3765	Instruction Book Kit	
INSTALLATION PARTS			
	YFAL131646	Removable Face Plate Case	
	YEFX0215873	Mounting Collar	
	YEAJ02874	Power Connector	
	YEP0FZ3264	Accessory Kit (ISO Antenna Adapter, Lock Cancel Plate, Mounting Bolt)	
	YEF05609	Trim Plate	A,B,C,D
	YEF05613	Trim Plate	E
Mechanical Parts			
MISCELLANEOUS			
ANT51	YGAA10082	Antenna Receptacle	
AT1	K4ZZ01000048	Terminal	
AT2	K4ZZ01000048	Terminal	
AT3	K4ZZ01000048	Terminal	

Ref. No.	Part No.	Part Name & Description	Remarks
1	YEFA031817A	Upper Cover	
2	YEF028196	Rear Cover, Escutcheon	
3	YEFS02302	Pad, Rear Cover	
4	YGFX9991689A	Lever, Back Cover	
5	YEFX0053018	Spring	
6	YEFS011113	Pad	
7	YEFX0052175	Spring	
8	YGFE134716	Button, Back Cover	
9	YEFX0012300	Transparent Plate	
10	YEFV021921	Optical Shade	
11	YEFX0216055A	Bracket, LCD901	
12	YEFAL31847	Back Cover, Detachable	
13	YEP0PT9408X9	Display PCB w/Component	A,C RTL
13	YEP0PT9408W9	Display PCB w/Component	B,D RTL
13	YEP0PT9408Y9	Display PCB w/Component	E RTL
14	YEF028203	Escutcheon Ass'y, Detachable	
15	YEF07522	Knob, VOLUME/SEL	
16	YEFX0052572	Moving Plate	
17	YEFEL37433	Button, BAND/APM, SRC/POWER	
18	YEFEL37955	Button, Preset	
19	YEFEL37957	Button, PTY/MONO/LOC, AF/REG	
20	YEFEL37956	Button, TUNE	
21	YEFEL37434	Button, Eject/DISP/CT	
22	YEFEL37431	Button, Releas	
23	YEFX0053019	Spring	
24	YEFX0012301	Transparent Plate	
25	YEFJ012528	Shad	
26	YEFJ012418	Plate, Detachable	A
26	YEFJ012419	Plate, Detachable	B
26	YEFJ012416	Plate, Detachable	C
26	YEFJ012417	Plate, Detachable	D
26	YEFJ012415	Plate, Detachable	E
27	YEFM031399	Laser Seal	
28	YEFM031400	Laser Seal	
29	YEP0PT9414Y9	CD Servo PCB w/Component	RTL
30	YEFX0216054A	Bracket, Deck	
31	YEFX0216132	Bracket (L)	
32	YEFF011092A	Heat Sink	
33	YEFA07630	Front Plate	
34	YEP0PT6983U9	Main PCB w/Component	A RTL
34	YEP0PT6983T9	Main PCB w/Component	B RTL
34	YEP0PT6983W9	Main PCB w/Component	C RTL
34	YEP0PT6983V9	Main PCB w/Component	D RTL
34	YEP0PT6983X9	Main PCB w/Component	E RTL
35	YEFX0214168	Bracket, Q711	
36	YEFX0213945B	Bracket, IC271	
37	YEFX0216059	Bracket, CN301	
38	YEFX0216301	Bracket, IC701	
39	YEFX0214168	Bracket, IC705	
40	YEFA08606AK	Rear Plate	
41	YEFA09746B	Side Plate (R)	
42	YEFX0216133	Bracket (R)	
43	YEFV012351	Insulator, Bottom Cover (L)	
44	YEFV012352	Insulator, Bottom Cover (R)	
45	YEFA05886	Bottom Cover	
46	YEP0FX5351	Removable Face Plate Unit	A RTL
46	YEP0FX5352	Removable Face Plate Unit	B RTL
46	YEP0FX5309	Removable Face Plate Unit	C RTL
46	YEP0FX5350	Removable Face Plate Unit	D RTL
46	YEP0FX5349	Removable Face Plate Unit	E RTL
61	XTN2+8GFZ	Tapping Screw 2*8	
62	XTN2+4GFX	Tapping Screw 2*4	
63	YEJS06093	Binding Screw	
64	YEJS06306	Binding Screw	
65	YEJT03009	Tapping Screw	
66	YEJT03327	Tapping Screw	
67	YEJT03156	Tapping Screw	
68	XTB26+5FFZ	Tapping Screw 2.6*5	
69	XTB3+6FFX	Tapping Screw 3*6	

13 EXPLODED VIEW (Unit)

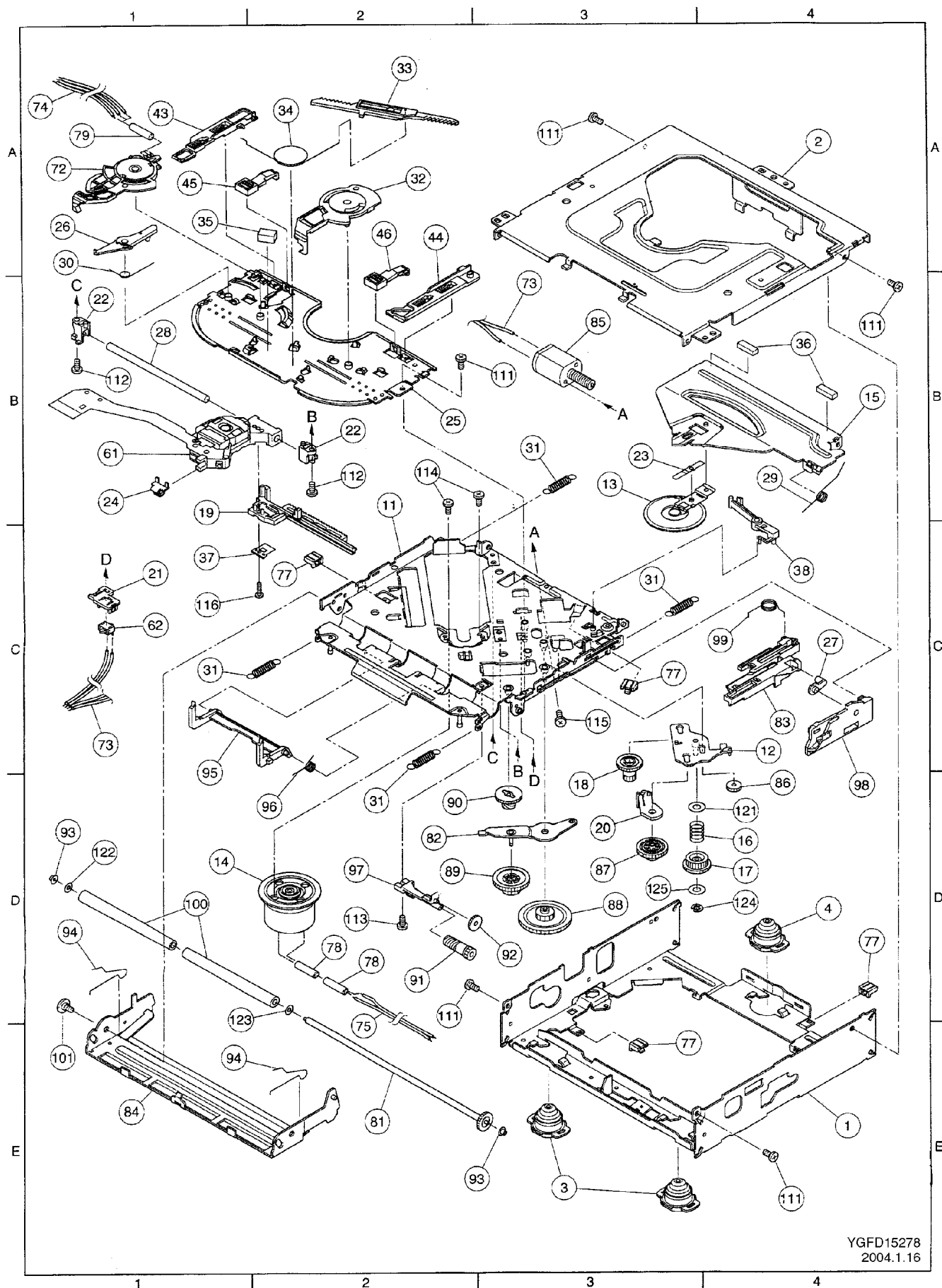


14 CD PLAYER MECHANISM PART

Ref. No.	Part No.	Part Name & Description	Remarks
MISCELLANEOUS			
1	YESFX046136	Frame	
2	YESFX046137	Top Cover	
3	YERFS04003	Damper F	
4	YERFS04004	Damper R	
11	YESFX046138	Chassis Rivet Ass'y	
12	YERFX046001	Change Plate Rivet Ass'y	
13	YERFX007001	Clamper Ass'y	
14	YESAK01041	Spindle Motor Ass'y	
15	YERFX046002	Clamper Arm	
16	YERFX005001	Change Gear Spring	
17	YERFX03001	Change Gear 2	
18	YERFX03002	Feed Gear	
19	YERFX03003	Feed Rack	
20	YERFX046003	Changer Lock Lever	
21	YERFW04001	Feed Switch Holder	
22	YERFW04002	Pick-up Shaft Holder	
23	YERFX005002	Clamper Sub Spring	
24	YERFW04003	FD Sub Holder	
25	YESFX046139	Top Plate	
26	YERFX046004	Select Lock Arm	
27	YERFX046006	Slide Hook	
28	YERFW01001	Pick-up Shaft	
29	YERFX005003	Clamper Arm Spring	
30	YERFX005004	Select Lock Arm Spring	
31	YERFX005013	Suspension Spring	
32	YESFX046140	Select Arm R	
33	YERFX003004	Link Plate	
34	YESFX005137	Link Plate Spring	
35	YERFS01001	Cushion F	
36	YERFS01002	Cushion R	
37	YERFX005014	Feed Spring Plate	
38	YERFX046005	Trigger Arm	
43	YERFX046008	Select Plate L	
44	YERFX046009	Select Plate R	
45	YERFX046010	Select Piece R	
46	YERFX046011	Select Piece L	
61	YESSZCDM002	Optical Pick-up Ass'y	
62	YERAS0001	Detection Switch	
72	YERAS0002	Mode Switch	
73	YESAJ07014	Loding Motor Wire	
74	YESAJ07015	Mode Switch Wire	
75	YESAJ07016	Spindle Motor Wire	
77	YERFX999001	Wire Clamper M	
78	YESFX024021	Wire Tube Spindle Motor	
79	YESFX024022	Wire Tube Mode Switch	
81	YERFX03005	Roller Shaft Ass'y	
82	YERFX046012	Loading Gear Plate Rivet Ass'y	
83	YERFX046013	Loading Plate Ass'y	
84	YESFX046173	Lock Arm Rivet Ass'y	
85	YESAK01040	Loading/Feed Motor Ass'y	
86	YERFX03006	Loading Gear 1	
87	YERFX03007	Loading Gear 2	
88	YERFX03008	Loading Gear 3	
89	YERFX03009	Loading Gear 4	
90	YERFX03010	Loading Gear 5	
91	YERFX03011	Loading Gear 6	
92	YERFX03012	Loading Gear 7	
93	YERFW04004	Roller Guide	
94	YERFX005007	Roller Guide Spring	
95	YERFX046015	Disc Stopper Arm	
96	YERFX005008	Disc Stop Arm Spring	
97	YERFX046016	LD Gear Bracket	
98	YESFX046174	L Slide Plate	
99	YERFX005009	Loading Plate Spring	
100	YESFX046150	Loading Roller	
101	YESJS01175	Collar Screw	

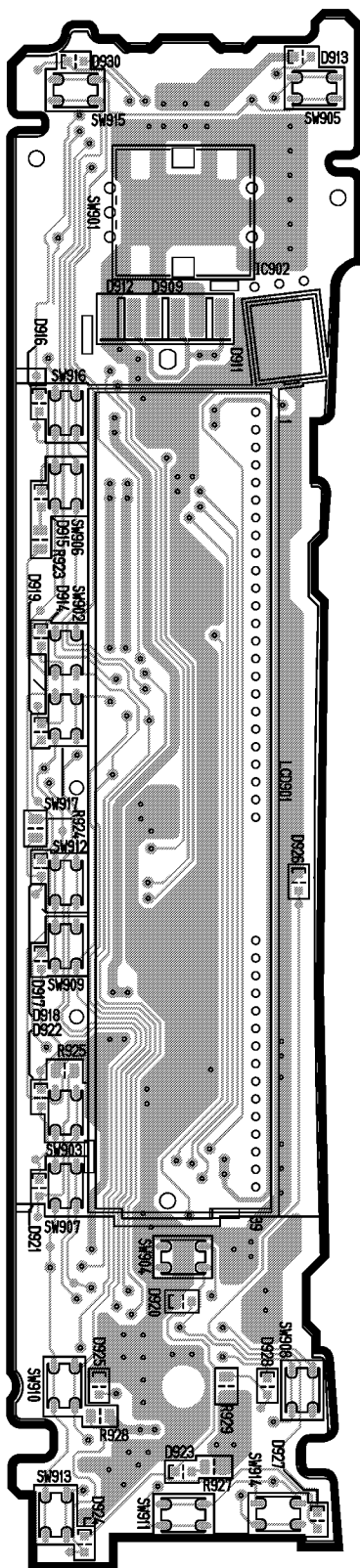
Ref. No.	Part No.	Part Name & Description	Remarks
111	YERJT01001	Tapping Screw 2*3	
112	YERJT01002	Tapping Screw 2*4	
113	YERJT03117	Tapping Bind Screw 2*4	
114	YERJS01002	Camera Screw 1.7*1.8	
115	YERJS01003	Camera Screw 2*2	
116	YERJS01004	Camera Tapping Screw 1.7*5	
121	YERJW01001	P Washer 3.5*8*0.3	
122	YERJW01002	HL Washer 1.85*5*0.13	
123	YERJW01003	Lumilar Washer 3.1*6*0.1	
124	YEJE01028	E Ring S 1.5	
125	YERJW01005	P Washer 2.1*4*0.13	

15 EXPLODED VIEW (CD Deck)

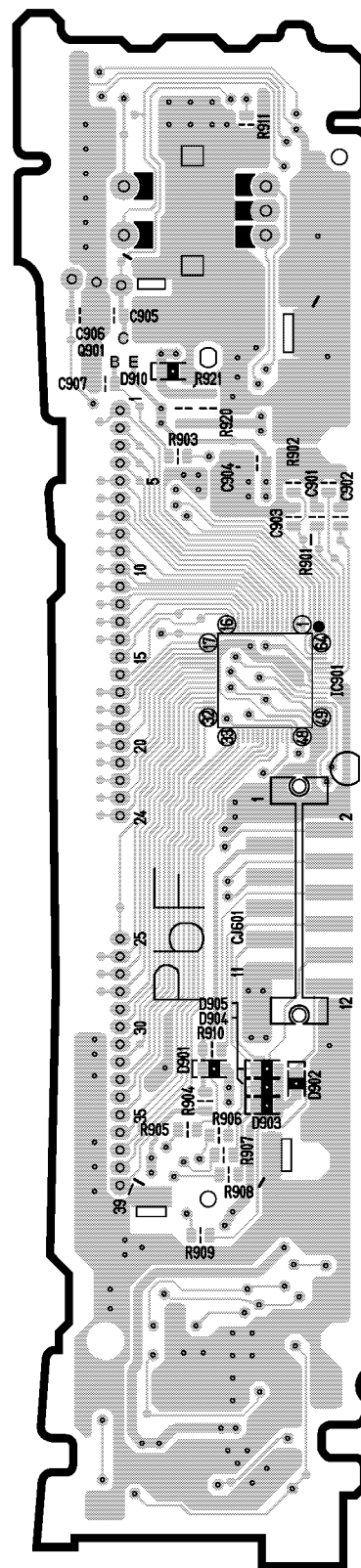


16 WIRING DIAGRAM

16.1. Display Block



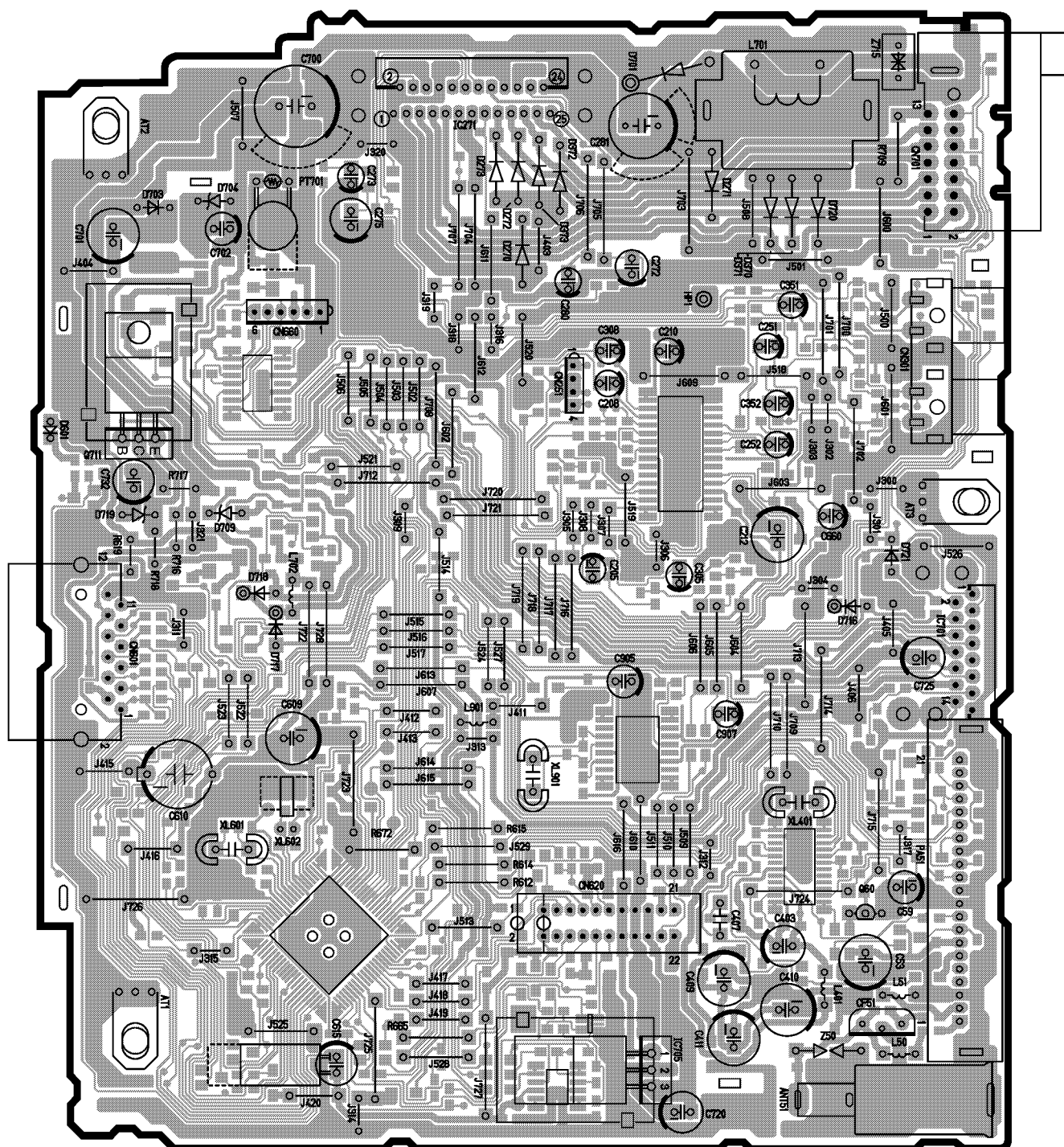
[E-9408][Top View]



[E-9408][Bottom View]

CQ-C1120AN/C1120GN/C1110AN/C1110GN/C1100VN DISPLAY P.C.B

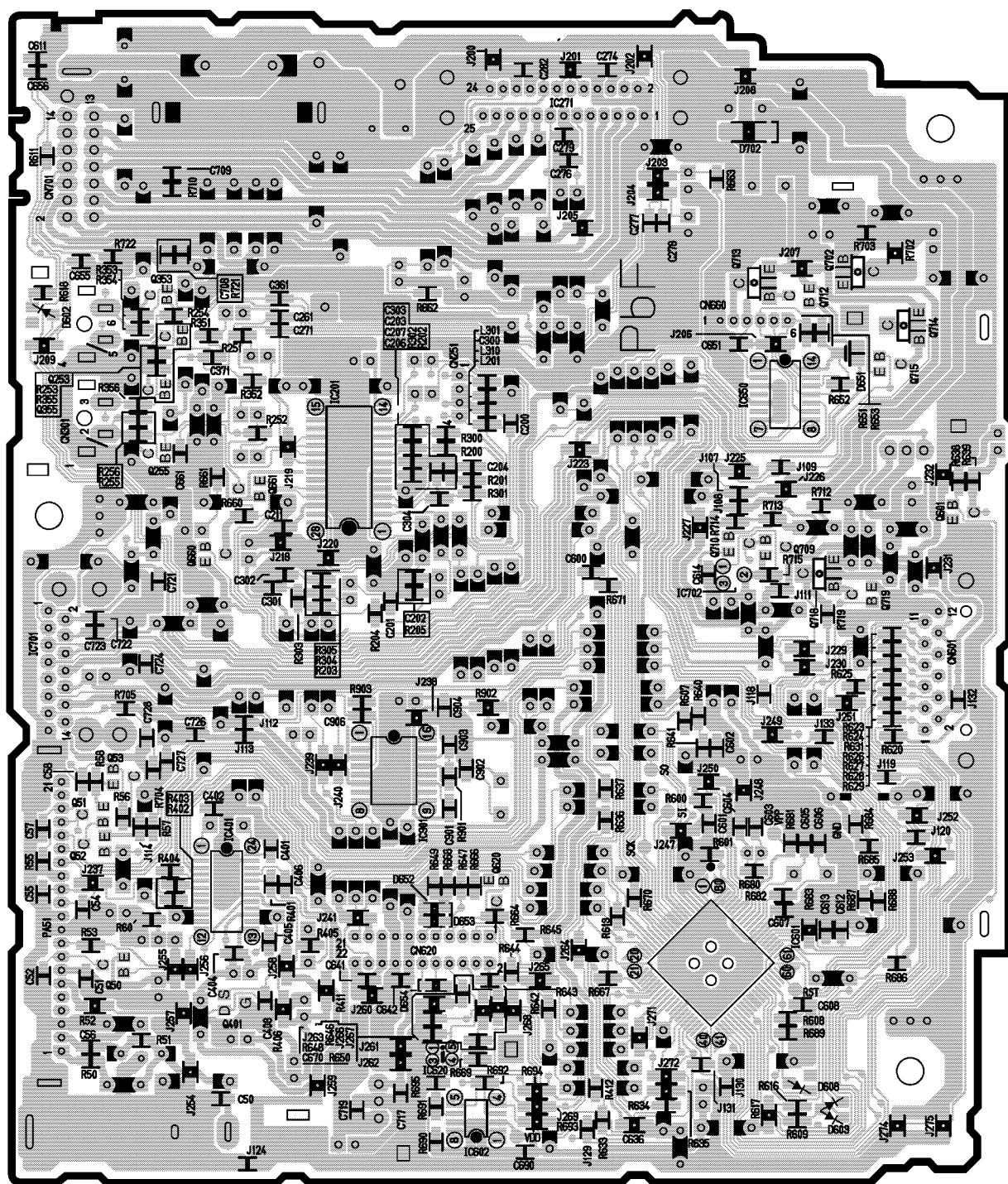
16.2. Main Block (Top View)



[E-6983a][Top View]

CQ-C1120AN/C1120GN/C1110AN/C1110GN/C1100VN MAIN P.C.B

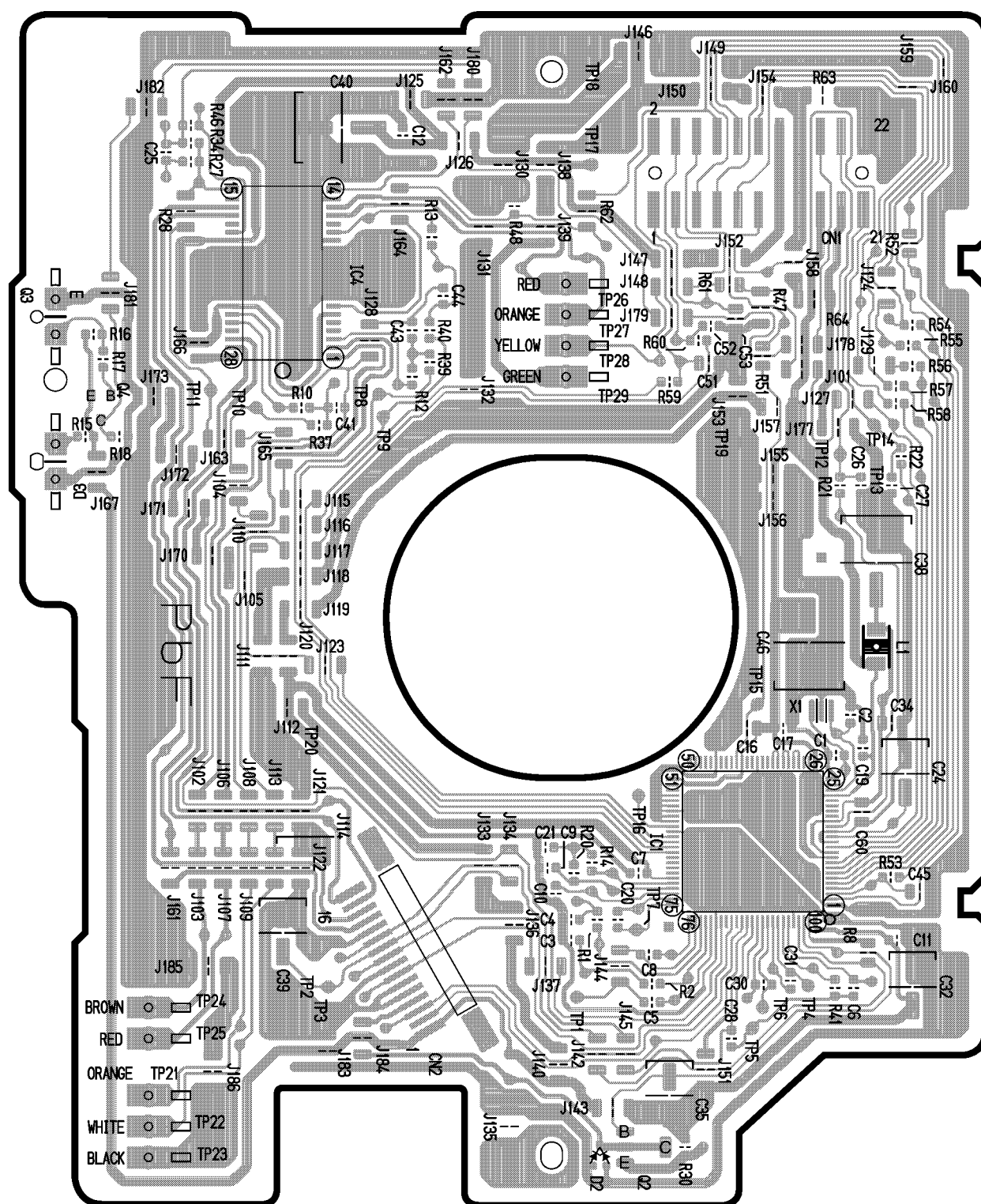
16.3. Main Block (Bottom View)



[E-6983a][Bottom View]

CQ-C1120AN/C1120GN/C1110AN/C1110GN/C1100VN MAIN P.C.B

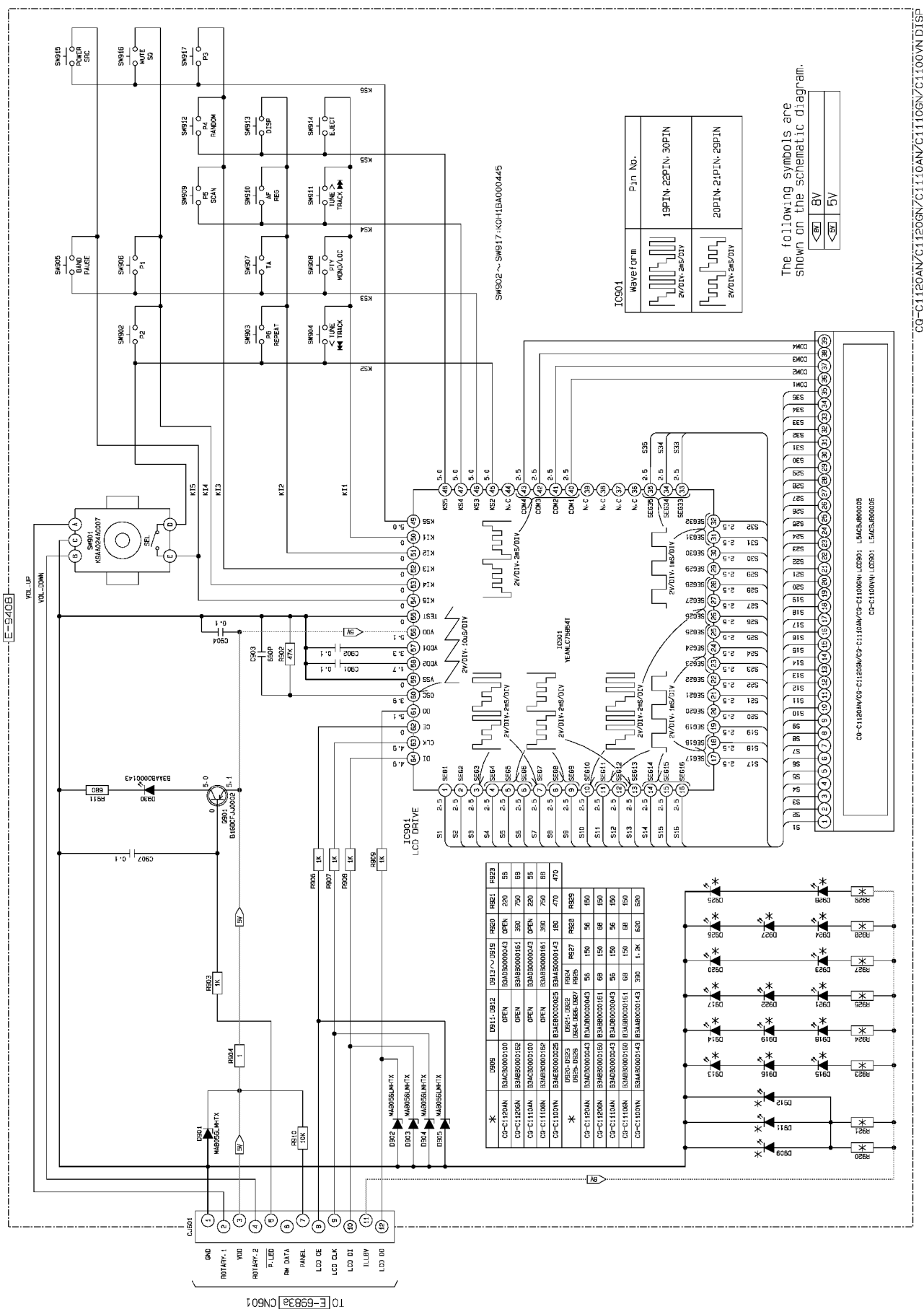
16.4. CD Servo Block



[E-9414][Top View]

17 SCHEMATIC DIAGRAM-1

17.1. Display Block



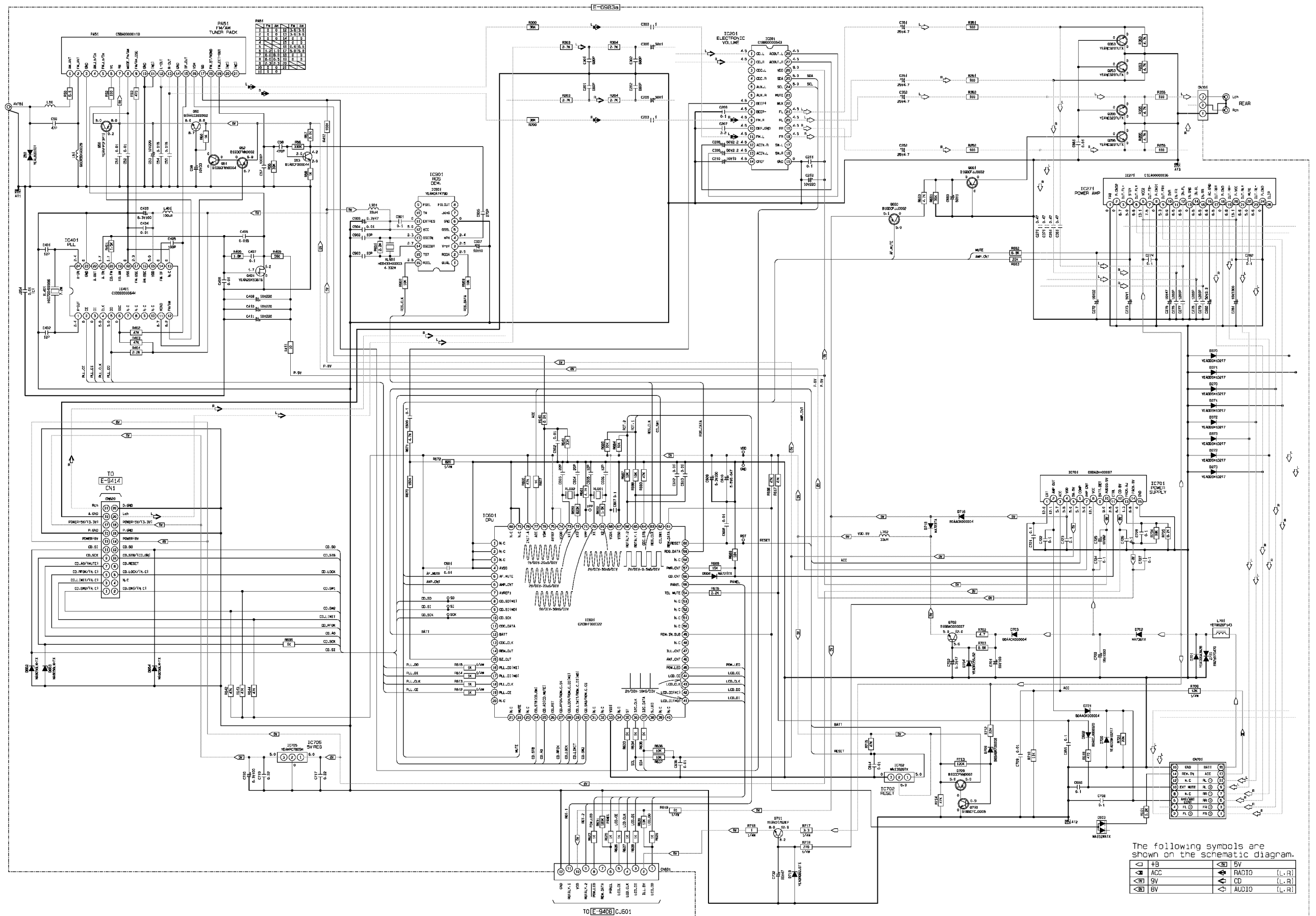
The following symbols are shown on the schematic diagram.

8V	8V
5V	5V









---CQ-C1120AN/C1120GN/C1110AN/C1110GN/C1100VN DISP---

18 SCHEMATIC DIAGRAM-2

18.1. Main Block



The following symbols are shown on the schematic diagram.

	+B		5V
	ACC		RADIO (L, R)
	9V		CD (L, R)
	8V		AUDIO (L, R)

18.2. CD Servo Block

