

MODEL: **i6500, i6100**

NO. : QR-12E-0059

DATE : April 1, 2003

M. Morita

LOCATION Units

SUBJECT Initial Shipment Information

DETAILS

Coinciding with shipment of the i6500 and i6100, this Service Information details shipment schedule, classification numbers at start of production, and related documents.

The i6500 is a successor model of the S6300, with enhanced specifications to increase competitiveness in the market.

- <Major enhancement>
- 4,800 x 1,200 dpi high resolution printing
 - Borderless printing supported
 - 5 x 7-sized paper (SP-101) supported

The i6100 is a successor model of the S4500, with enhanced specifications to increase competitiveness in the low-end A3 printer markets.

- <Major enhancement>
- 2,400 x 1,200 dpi high resolution printing
 - A3+, LDR, and 5 x 7 sized paper (SP-101) supported
 - Higher printing speed

START OF SHIPMENT

- Japan PIXUS 6100i, PIXUS 6500i: March, 2003
- Overseas i6100: March or later, 2003, in Asia, Oceania, and Europe
- i6500: March or later, 2003, in Asia and Oceania

CLASSIFICATION NUMBER READING

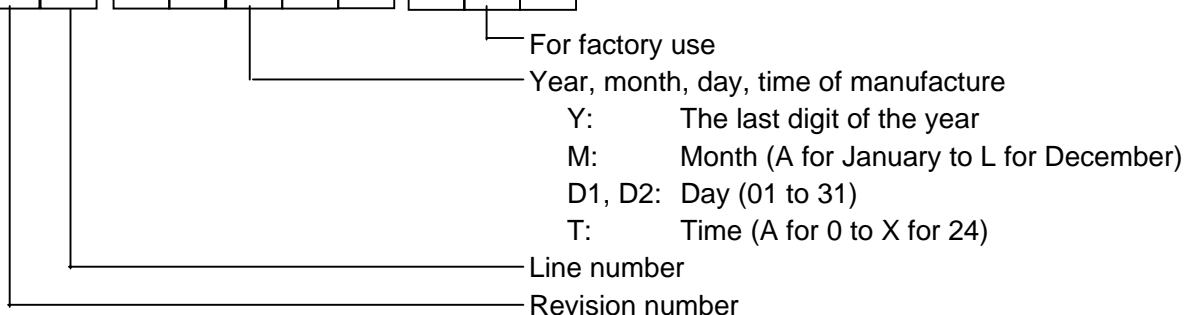
1. Printer
ROM version number at start of production: Ver. 1.00

2. Print head

No.	Part name	Part no.
1	Print head	QY6-0034

3. Classification number reading:

U	L	Y	M	D1	D2	T	F1	F2	F3
---	---	---	---	----	----	---	----	----	----



SERVICE TIP

1. Related documents reference number

Parts Catalog (attached to this bulletin): QY8-31BQ-000
(for i6100 and i6500)

Service Plan: QY8-6398-000 (i6500)
QY8-6399-000 (i6100)

2. Printer serial number label position

On the carriage ribbon cable holder (visible when the front cover is opened).



3. Special notes in repair servicing

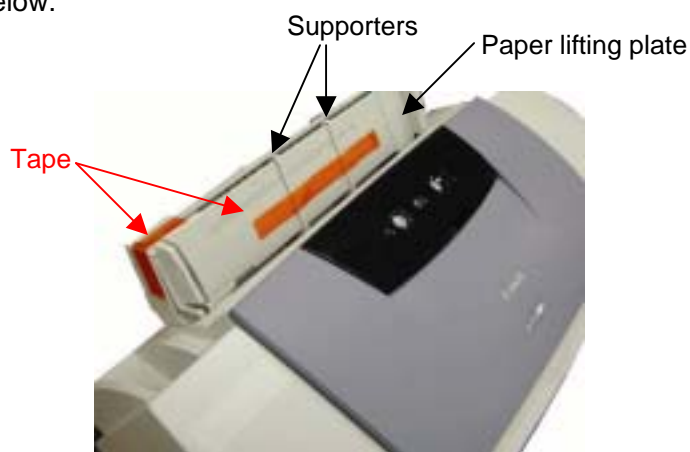
During transportation, the paper lifting plate and supporters may be dislocated from the auto sheet feeder unit. Please perform the following in repair servicing:

<When receiving a unit from a customer>

Check if the paper lifting plate or supporters are dislocated, and assemble them properly if necessary.

<When returning a repaired unit to the customer>

Apply the tapes over the upper left corner of the auto sheet feeder and supporters, as shown in the figure below.



PIXUS 6100i / i6100

PIXUS 6500i / i6500

PARTS

CATALOG

REVISION 0

PIXUS 6100i / i6100

8533A008AA	220V-240V(ASA HVT)
8533A009AA	220V-240V(AU)
8533A010AA	220V-240V(KR)
8533A011AA	220V-240V(GB)
8533A012AA	100V(JP)
8533A013AA	120V(TW)
8533A014AA	220V-240V(HK)
8533A015AA	220V-240V(CN)

PIXUS 6500i / i6500

8534A005AA	220V-240V(EUR)
8534A006AA	220V-240V(DE)
8534A007AA	220V-240V(FR)
8534A008AA	220V-240V(ASA HVT)
8534A009AA	220V-240V(AU)
8534A010AA	220V-240V(KR)
8534A011AA	220V-240V(GB)
8534A012AA	120V(JP)
8534A013AA	120V(TW)
8534A014AA	220V-240V(HK)
8534A015AA	220V-240V(CN)

Canon

MAR. 2003

QY8-31BQ-000

0303 N 0.00-0

PIXUS 6100i / i6100

PIXUS 6500i / i6500

**PARTS
CATALOG**

Canon

Application

This manual has been issued by Canon Inc. for qualified person to learn technical theory, installation, maintenance, and repair of products. This manual covers all localities where the products are sold. For this reason, there may be information in this manual that does not apply to your locality.

Corrections

This manual could include technical inaccuracies or typographical errors due to improvements or changes in the products. When changes occur in applicable products or in the content of this manual, Canon will release technical information as the need arises. In the event of major changes in the contents of this manual over a long or short period, Canon will issue a new editions of this manual.

The following paragraph does not apply to any countries where such provisions are inconsistent with local law.

Trademarks

The product names and company names described in this manual are the registered trademarks of the individual companies.

Copyright

This manual is copyrighted with all rights reserved. Under the copyright laws, this manual may not be copied, reproduced or translated into another language, in whole or in part, without the written consent of Canon Inc.

Copyright © 2003 by Canon Inc.

CANON INC.

i Printer Product Quality Assurance Div.

16-1, Shimonoge 3-chome, Takatsu-ku, Kawasaki-shi,
Kanagawa 213-8512, Japan

DTP System

This manual was produced on an Apple® Power Macintosh® G3 personal computer and Canon LBP-2030PS laser beam printer.

Parts layout illustrations and Logotypes were created using MACROMEDIA® FreeHand® 7J.

Documents and page layouts were created using QuarkXpress® 3.3J.

Parts lists were created using Helix Technologies® Herix Xpress® and converted to EPS files.

I. CONTENTS

- A. ILLUSTRATION INDEX
- B. PARTS LAYOUT & PARTS LIST
- C. OPTIONS & CONSUMABLES
- D. SCREWS & WASHERS LIST
- E. TOOL
- F. NUMERICAL INDEX

II. ABOUT THIS MANUAL

A. ILLUSTRATION INDEX

For illustration index, the parts layout illustrations in this parts catalog are listed in abbreviated form in order of illustration number to identify the pages they appear on. To find an illustration of a part, see the ILLUSTRATION INDEX.

B. PARTS LAYOUT & PARTS LIST

Parts layout illustration

a) Parts search

Find a part from the parts layout illustration and find its key number from the parts list to identify the part number and name. For screws, nuts, washers, lock washers, pins, spacers, see SCREWS & WASHERS LIST.

Note: If parts have the same or similar shape but different specifications, their key number is assigned to several part numbers and names in the parts list.

b) Parts replacement procedure

To replace parts, the parts layout illustrations have figure numbers according to the disassembly procedure of the product. The parts that require careful work are shown the illustration.

Parts list

a) FIGURE & KEY No.

The FIGURE & KEY No. column corresponds to the key numbers assigned to the parts in the parts layout illustration. It also corresponds to the part locations printed on the PC board.

b) PART NUMBER

The PART NUMBER column gives the part numbers corresponding to the key numbers. To order a part, indicate the part number clearly.

Note: Parts marked NPN are not service parts.

c) RANK

The service parts with N in the RANK column are order parts.

d) QTY

The QTY column gives the number of parts in the corresponding components layout illustration.

e) DESCRIPTION

The DESCRIPTION column gives the part names in English.

To order a part, indicate the part name, too.

C. OPTIONS & CONSUMABLES

These are illustrations and a list of units that can be used as optional consumable equipments.

D. SCREWS & WASHERS LIST

This is a list of screws, nuts, washers, lock washers, pins, and spacers.

The QTY column does not give the number of parts used.

E. TOOL LIST

This is a list of tools used for servicing products.

F. NUMERICAL INDEX

All the parts listed in this parts catalog are arranged in order of part number. You can identify part locations and names from the NUMERICAL INDEX.

A. ILLUSTRATION INDEX

FIGURE 1 PRINTER & PRINT HEAD

See Page
B - 1

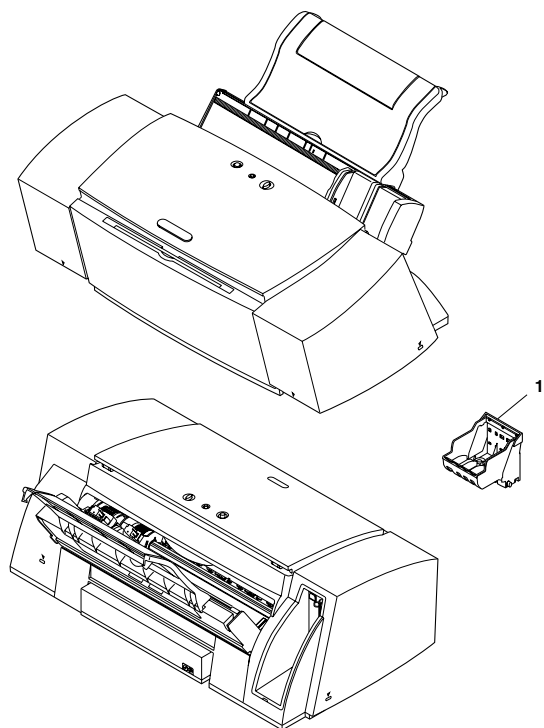


FIGURE 2 TRAY & COVER

See Page
B - 3

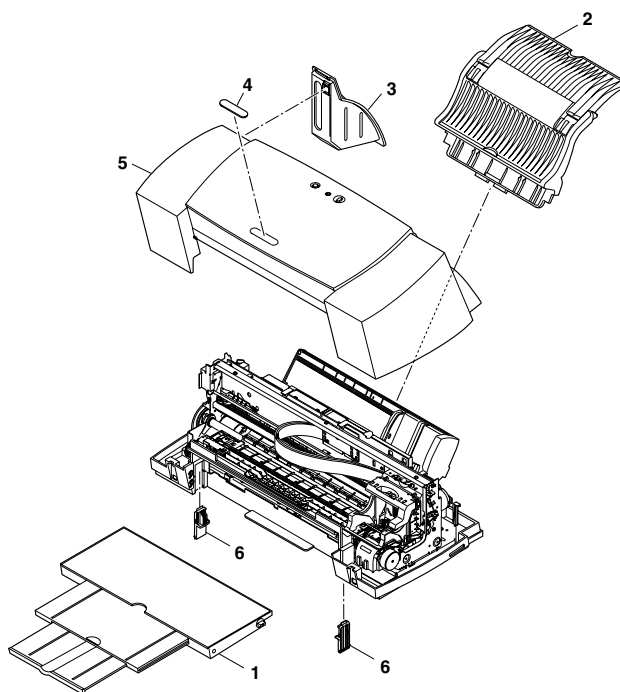


FIGURE 3 AC ADAPTER

See Page
B - 5

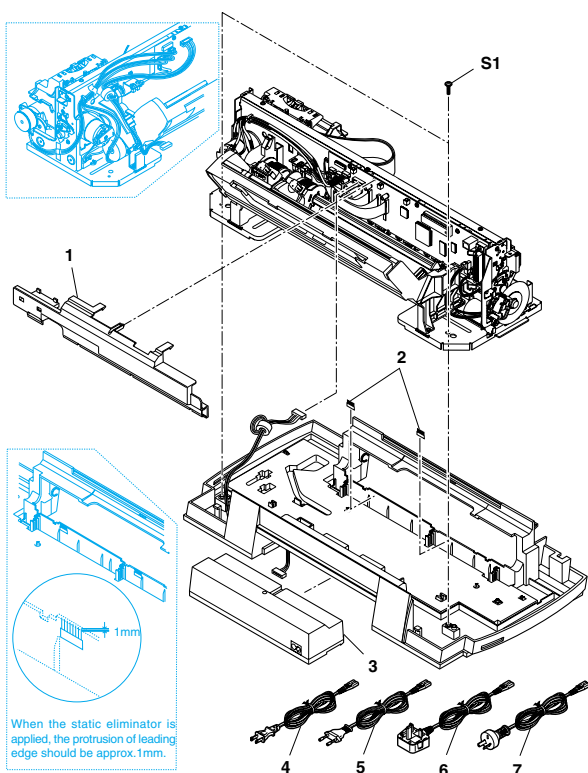


FIGURE 4 WASTE INK ABSORBER

See Page
B - 7

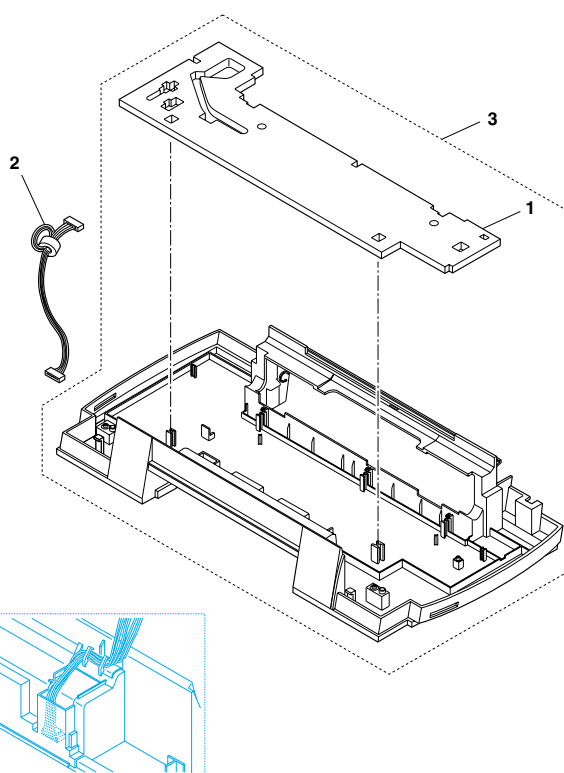


FIGURE 5 LOGIC BOARD & ASF UNIT

See Page
B - 9

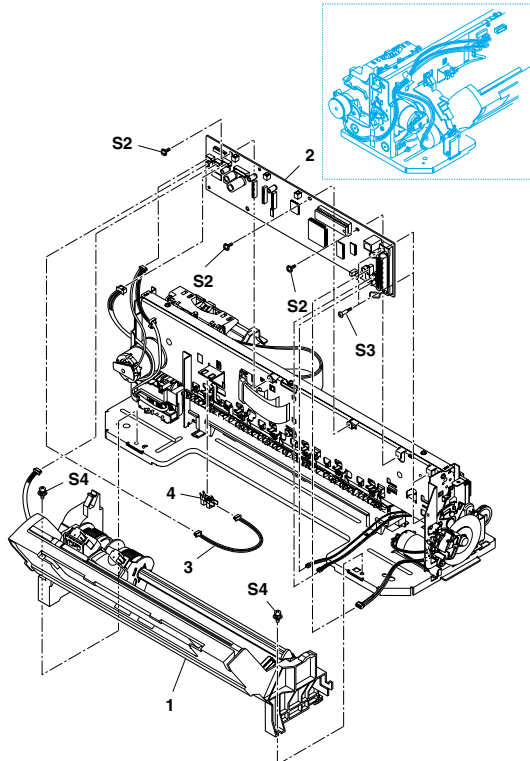


FIGURE 6 PURGE UNIT

See Page
B - 11

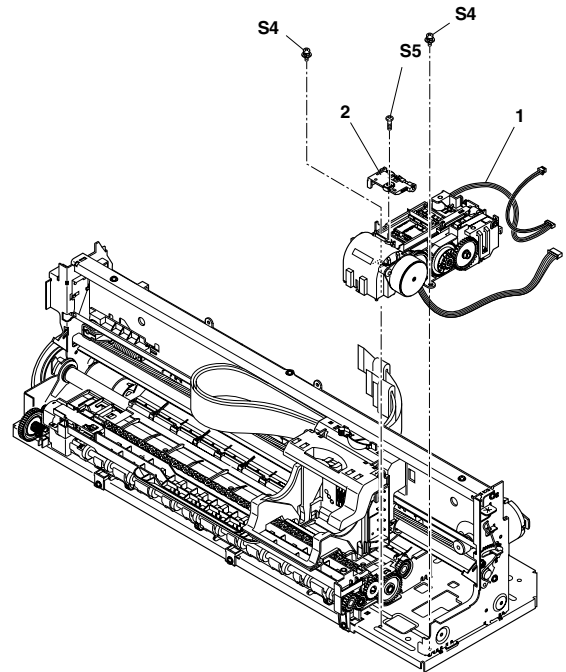


FIGURE 7 CARRIAGE UNIT

See Page
B - 13

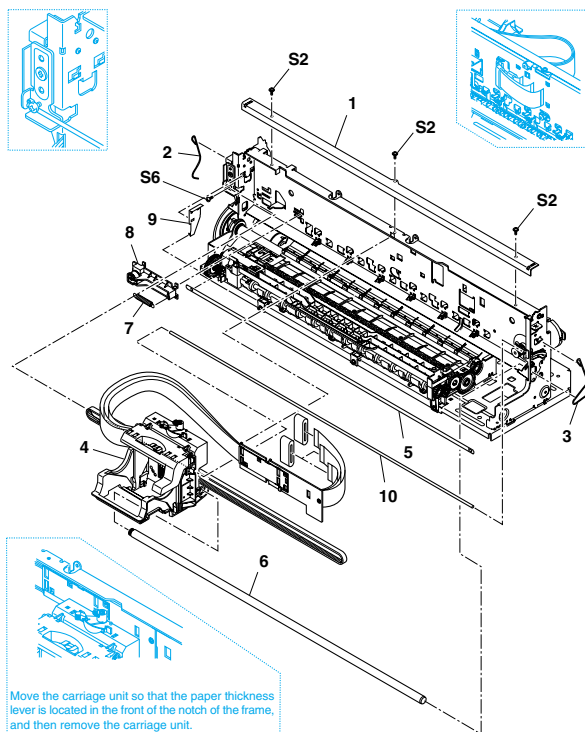


FIGURE 8 PRESSURE ROLLER ASS'Y

See Page
B - 15

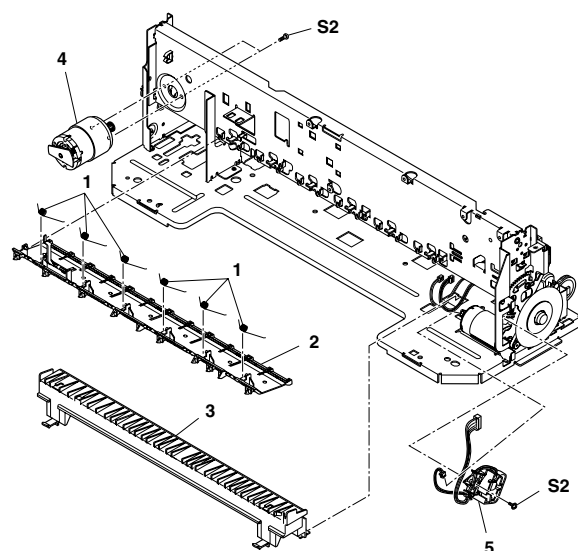
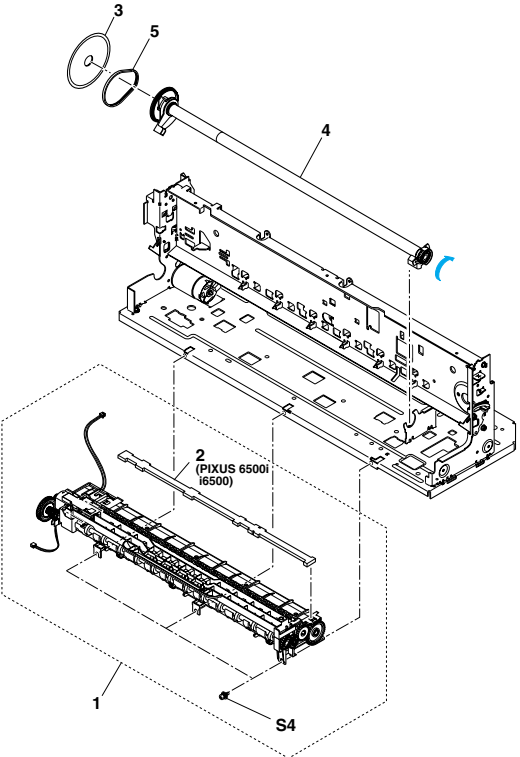
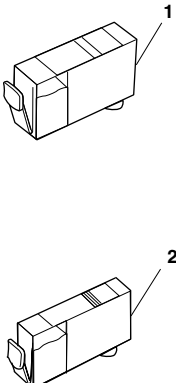
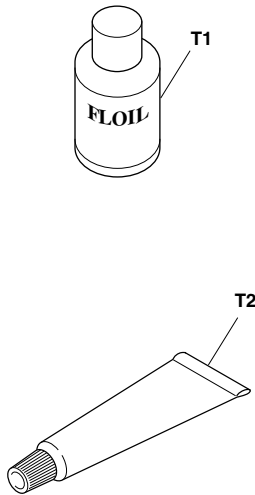


FIGURE 9 PAPER FEED UNIT	See Page B - 17	FIGURE 10 OPTION& CONSUMABLES	See Page C - 1
			
FIGURE 11 TOOL	See Page E - 1		
			

This page intentionally left blank



B. PARTS LAYOUT & PARTS LIST

FIGURE 1 PRINTER & PRINT HEAD

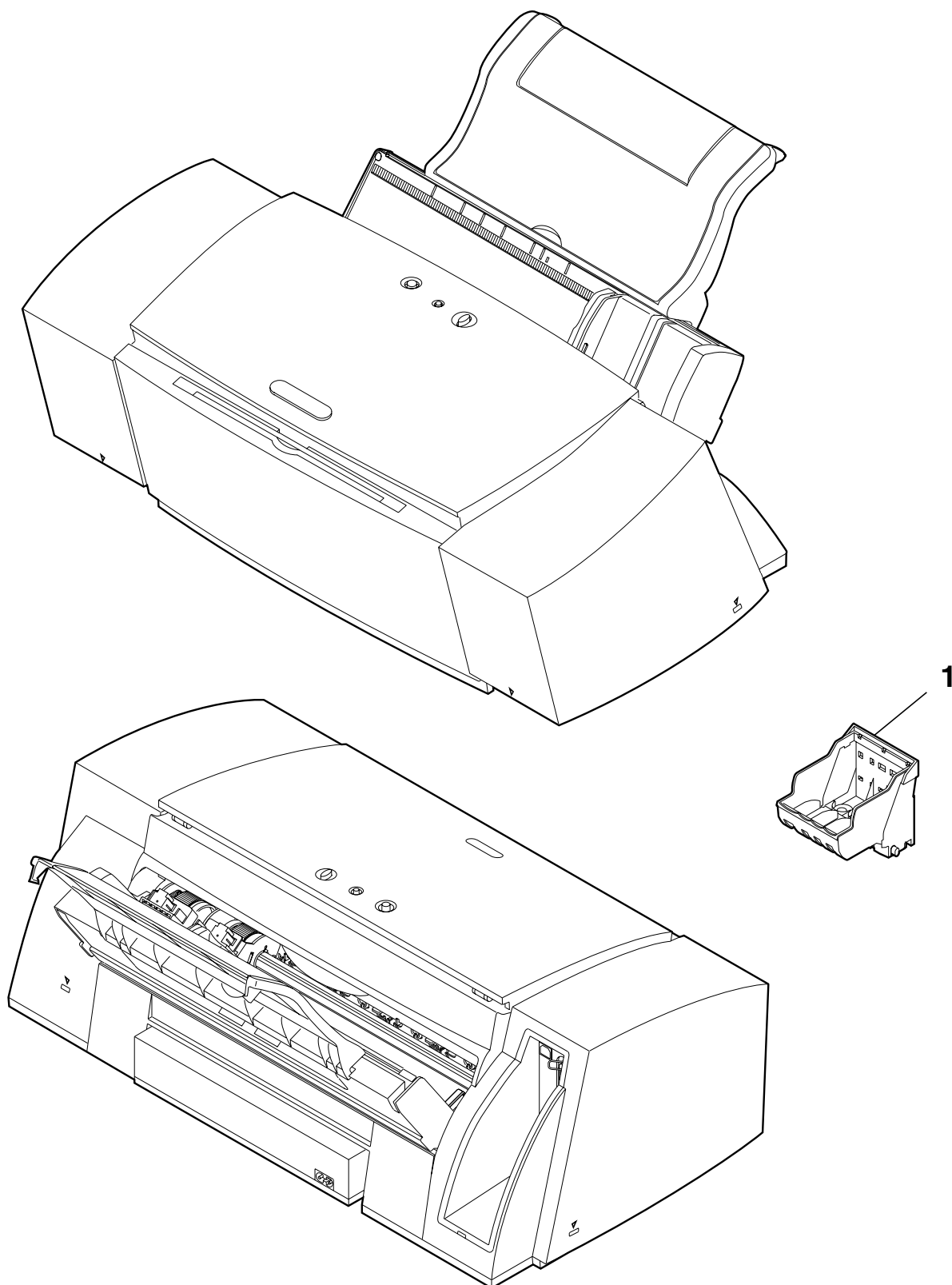


FIGURE & KEY NO.	PART NUMBER	R A N K	Q T Y	DESCRIPTION	REMARKS
1- 1	QY6-0034-000		1	PRINT HEAD	

FIGURE 2 TRAY & COVER

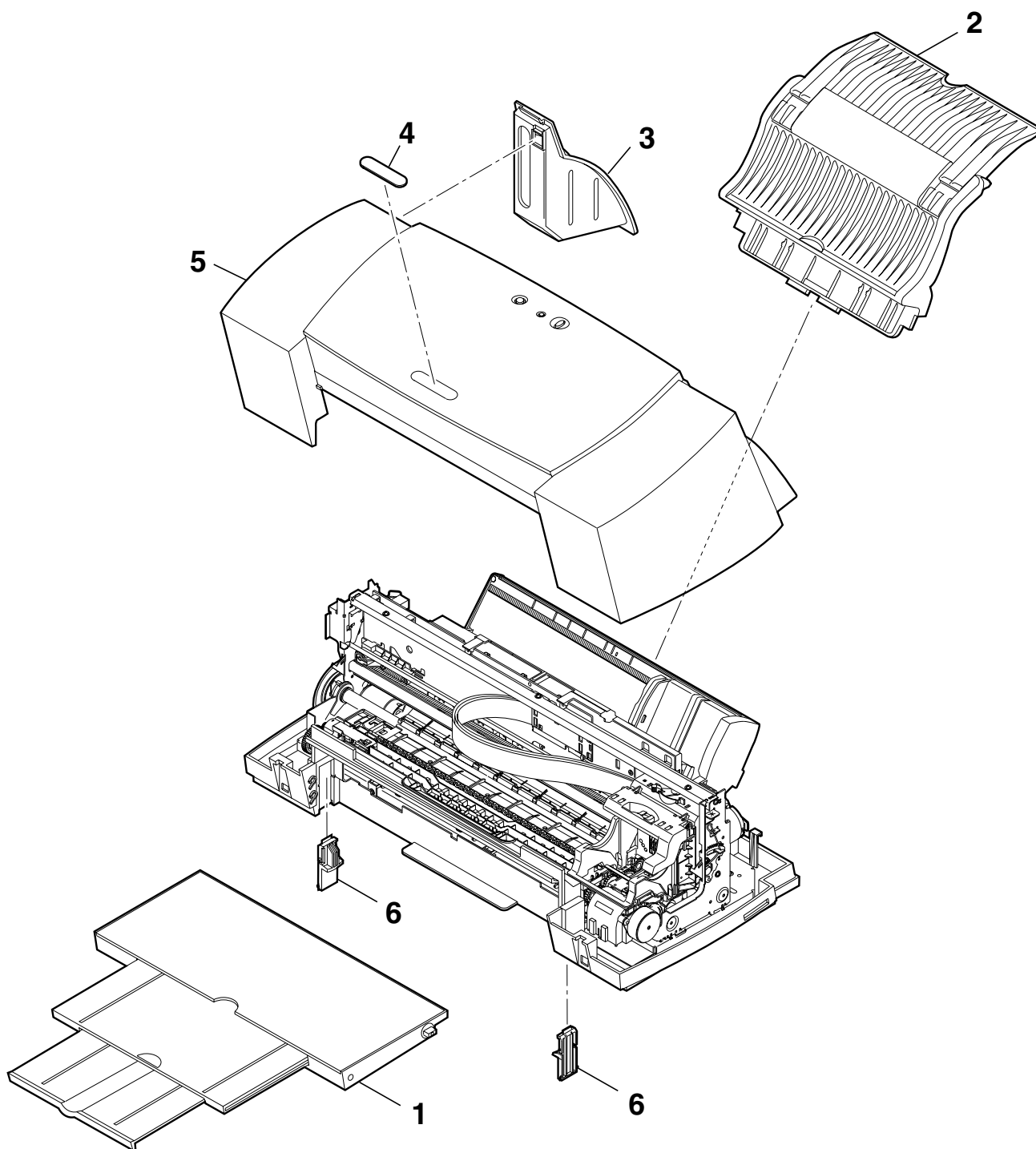


FIGURE & KEY NO.	PART NUMBER	R A N K	Q T Y	DESCRIPTION	REMARKS
2- 1	QM2-0426-000		1	OUT PUT TRAY UNIT	
2	QM2-0425-000		1	PAPER SUPPORT UNIT	
3	QC1-1580-000		1	COVER, I/F	
4	QC1-1581-000		1	PLATE, MODEL NAME	FOR PIXUS 6500i
	QC1-1582-000		1	PLATE, MODEL NAME	FOR i6500
	QC1-1615-000		1	PLATE, MODEL NAME	FOR PIXUS 6100i
	QC1-1616-000		1	PLATE, MODEL NAME	FOR i6100
5	QM2-0427-000		1	UPPER COVER ASS'Y	FOR PIXUS 6500i, i6500
	QM2-0439-000		1	UPPER COVER ASS'Y	FOR PIXUS 6100i, i6100
6	QC1-1583-000		2	STOPPER, TRAY	

FIGURE 3 AC ADAPTER

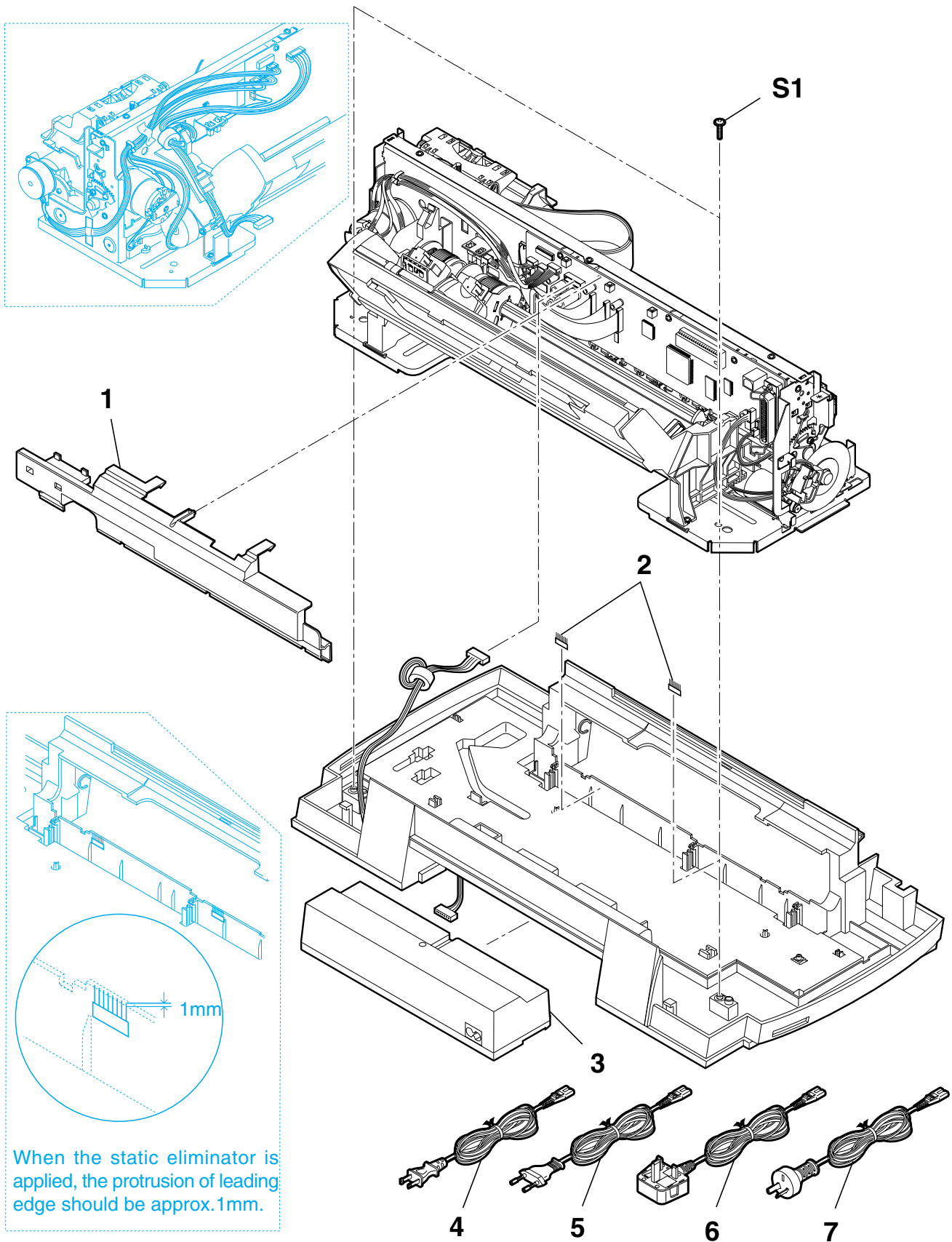


FIGURE & KEY NO.	PART NUMBER	R A N K	Q T Y	DESCRIPTION	REMARKS
3 - 1	QA4-0309-000		1	COVER, LOGIC BOARD	
2	QA4-0364-000		2	STATIC ELININATOR	
3	QH3-3411-000		1	AC ADAPTER: 100V-120V 50/60HZ	
	QH3-3412-000		1	AC ADAPTER: 220V-240V 50/60HZ	
	QH3-3467-000		1	AC ADAPTER: 220V-240V 50/60HZ	ASIA, KR
4	WT3-5122-000		1	CORD, POWER	100V-120V
	WT3-5159-000		1	CORD, POWER	250V(KR)
	WT3-5180-000		1	CORD, POWER	250V(CH)
5	WT3-5132-000		1	CORD, POWER	220V-240V
6	WT3-5121-000		1	CORD, POWER	220V-240V(UK,HK)
7	WT3-5133-000		1	CORD, POWER	220V-240V(AUST)

FIGURE 4 WASTE INK ABSORBER

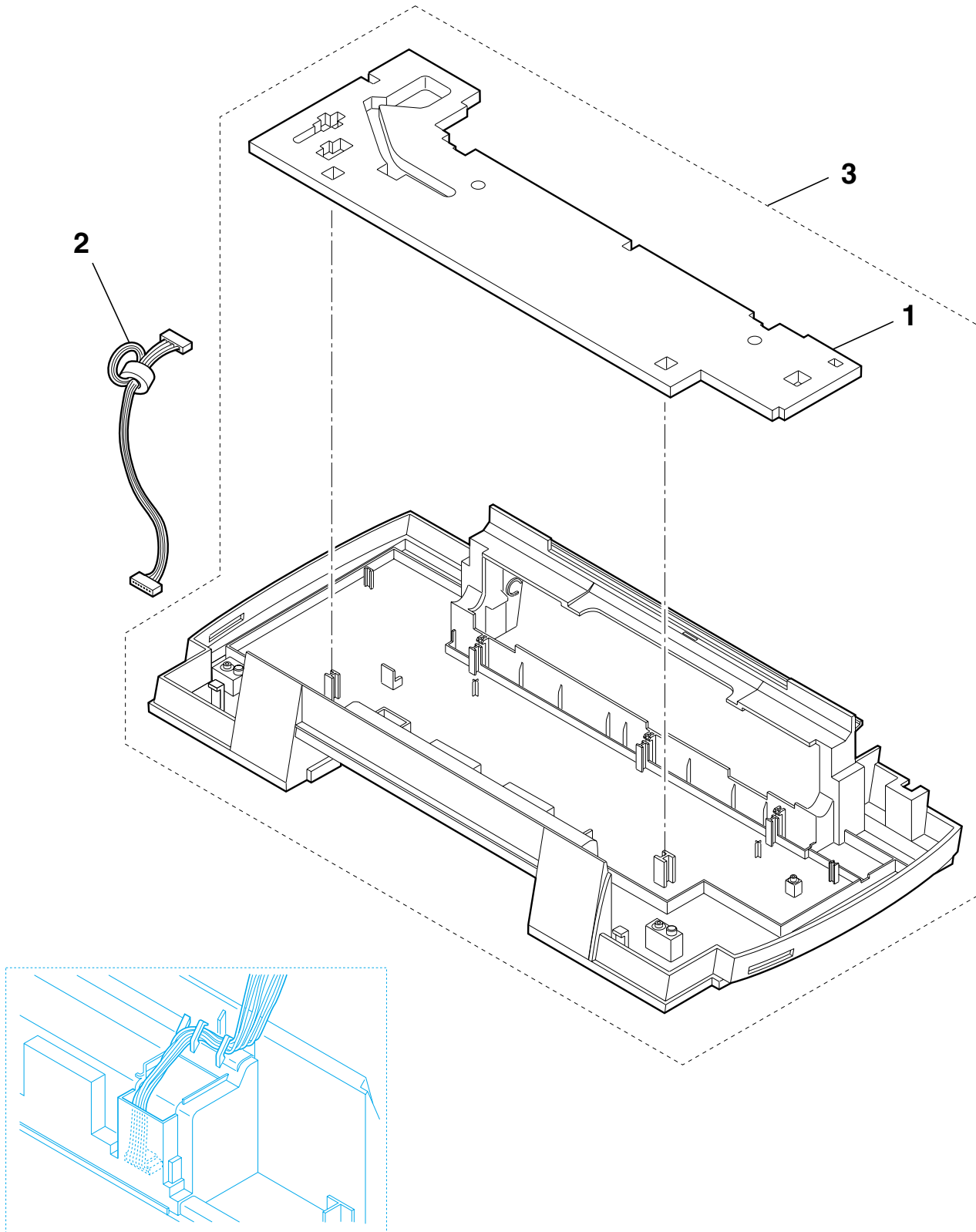


FIGURE & KEY NO.	PART NUMBER	R A N K	Q T Y	DESCRIPTION	REMARKS
4 - 1	QA4-0323-000		1	ABSORBER, INK	(WITH CABLE)
2	QG2-3348-000		1	DC CONNECTOR ASS'Y	
3	QM2-0428-000		1	BOTTOM CASE UNIT	

FIGURE 5 LOGIC BOARD & ASF UNIT

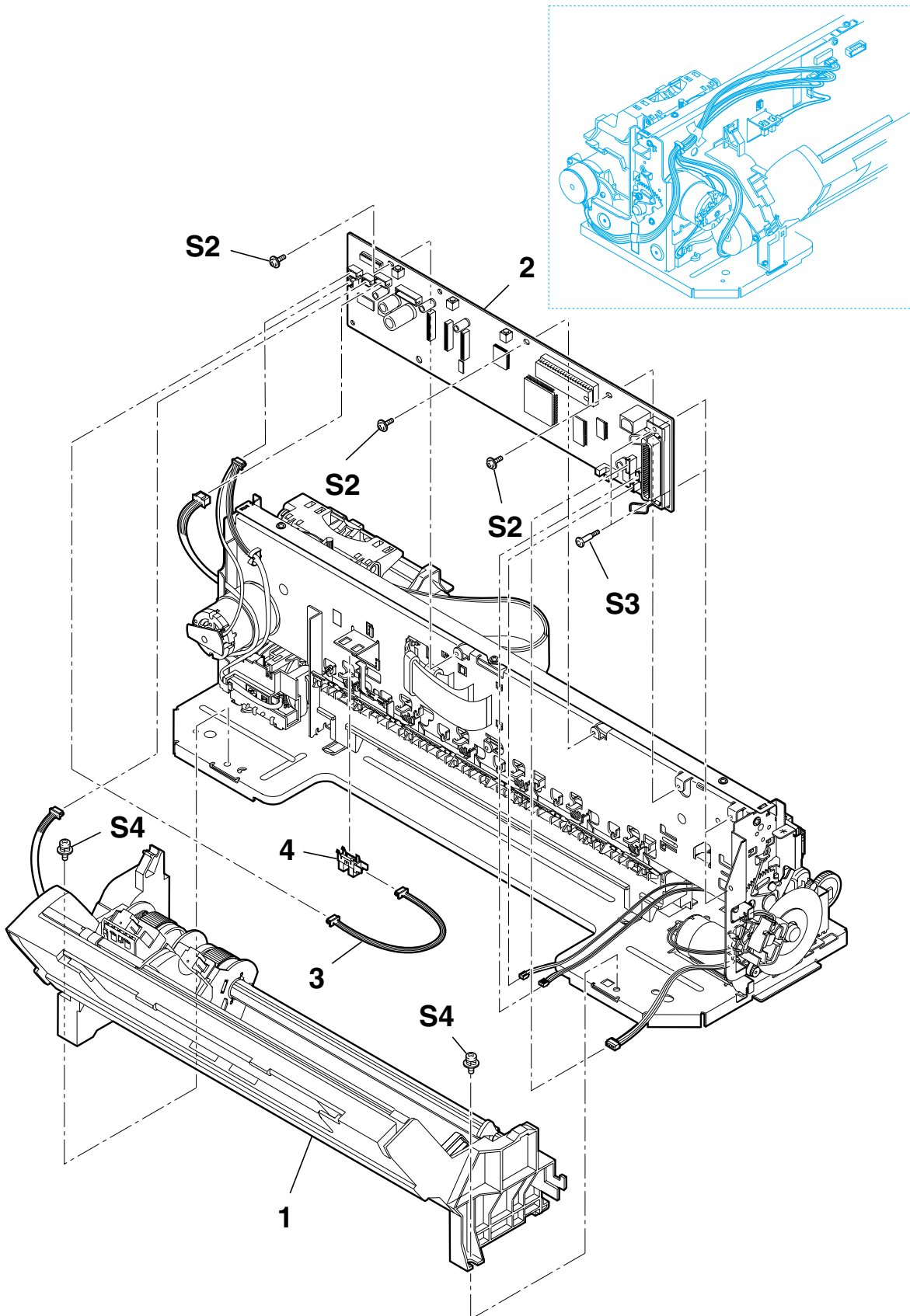


FIGURE & KEY NO.	PART NUMBER	R A N K	Q T Y	DESCRIPTION	REMARKS
5 - 1	QM2-0429-000		1	SHEET FEEDER UNIT	FOR PIXUS 6500i, i6500 FOR PIXUS 6100i, i6100
2	QG2-3515-000		1	LOGIC BOARD ASS'Y	
	QG2-3516-000		1	LOGIC BOARD ASS'Y	
3	QG2-3352-000		1	PE SENSOR CONNECTOR ASS'Y	
4	WG8-5382-000		1	IC, TLP1242, PHOTO INTERRUPTER	

FIGURE 6 PURGE UNIT

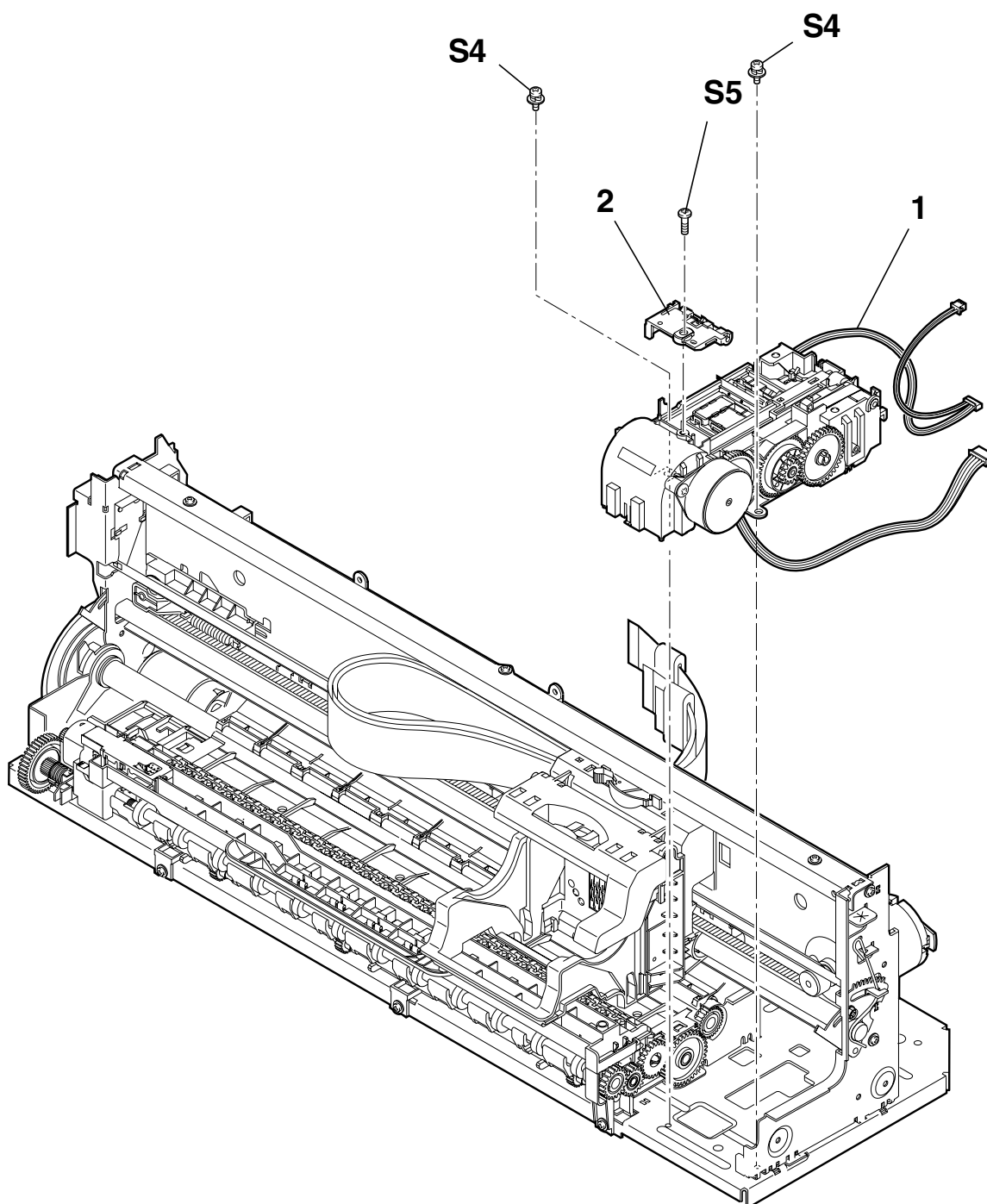
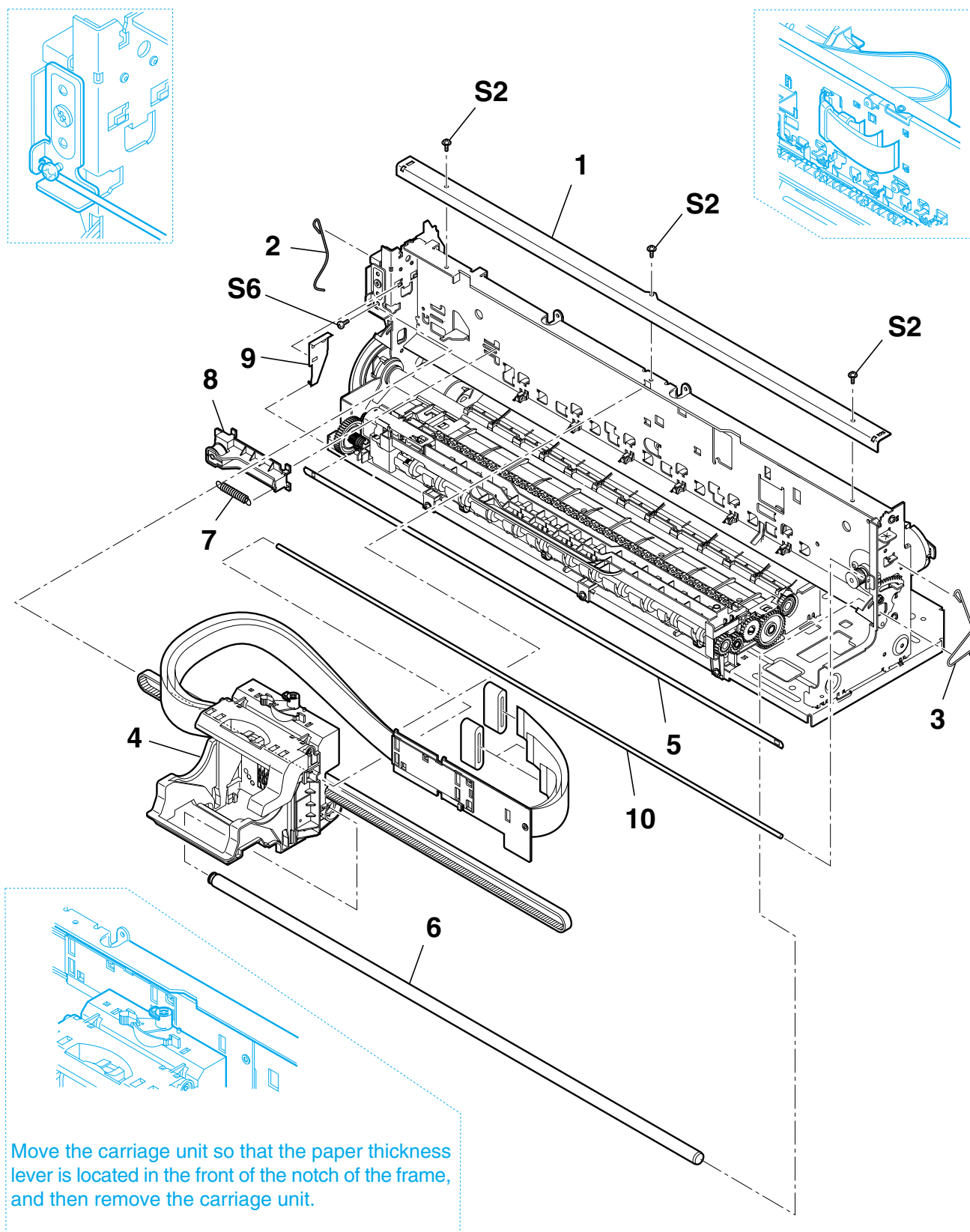


FIGURE & KEY NO.	PART NUMBER	R A N K	Q T Y	DESCRIPTION	REMARKS
6 - 1 2	QG4-0087-000 QG4-0022-000	N N	1 1	PURGE UNIT WIPER CLEANER ASS'Y	

FIGURE 7 CARRIAGE UNIT



Move the carriage unit so that the paper thickness lever is located in the front of the notch of the frame, and then remove the carriage unit.

FIGURE & KEY NO.	PART NUMBER	R A N K	Q T Y	DESCRIPTION	REMARKS
7 - 1	QA4-0335-000	N	1	FRAME, CARRIAGE GUIDE	
2	QA4-0370-000		1	CLIP, SHAFT	
3	QB1-4013-000		1	CLIP, SHAFT	
4	QG4-0089-000		1	CARRIAGE UNIT	
5	QA4-0334-000		1	FILM, TIMING SLIT STRIP	
6	QA4-0371-000		1	SHAFT, CARRIAGE	
7	QS4-2001-000		1	SPRING, COIL	
8	QF4-0004-000		1	IDLER, ROLLER ASS'Y	
9	QA4-0018-000		1	SPRING, LEAF	
10	QA4-1403-000		1	GUARD BAR	

FIGURE 8 PRESSURE ROLLER ASS'Y

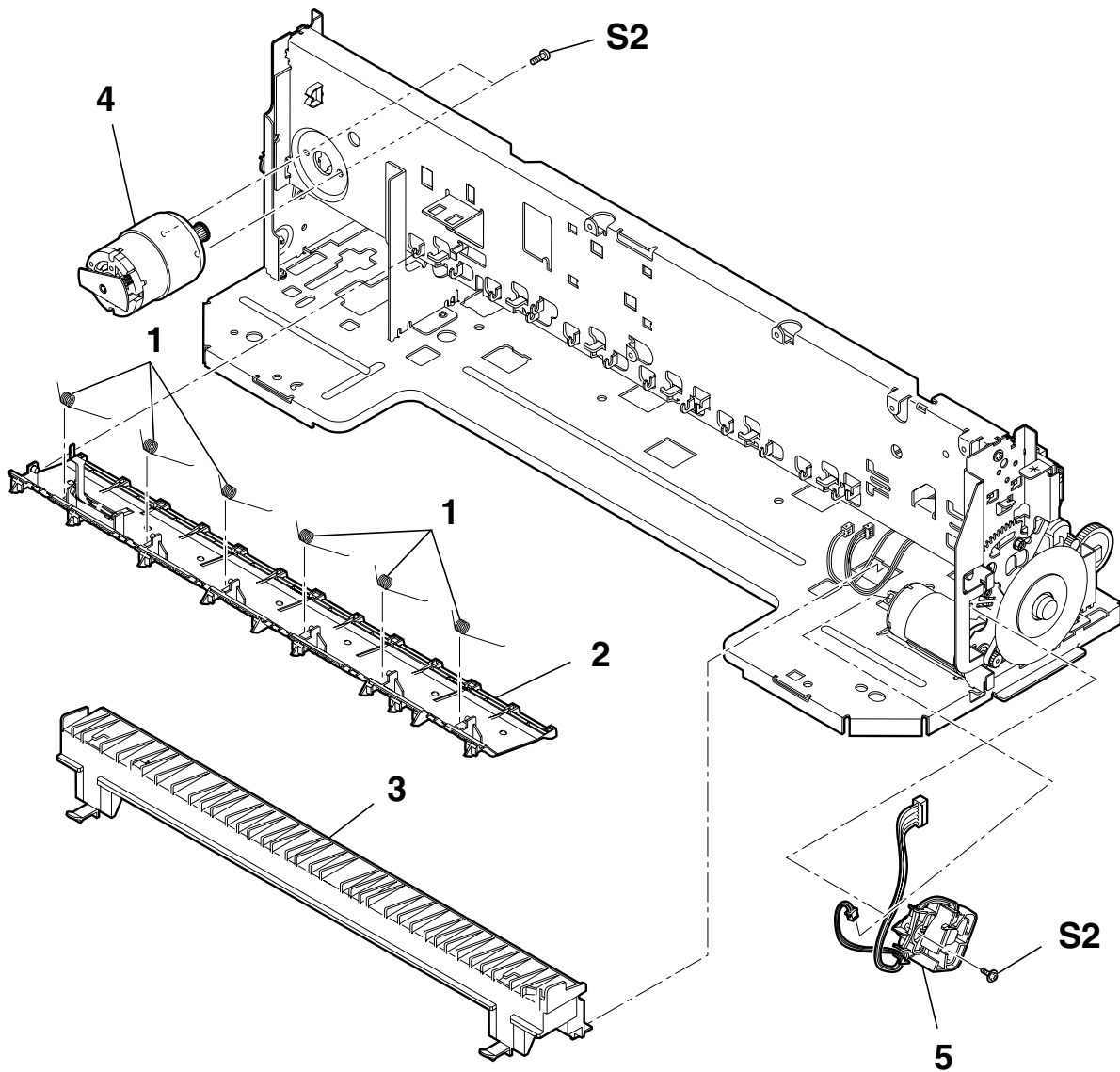


FIGURE & KEY NO.	PART NUMBER	R A N K	Q T Y	DESCRIPTION	REMARKS
8 - 1	QA4-0111-000		6	SPRING, TORSION	
2	QG4-0056-000		1	PRESSURE ROLLER ASS'Y	FOR PIXUS 6100i, i6100
	QM2-0433-000		1	PRESSURE ROLLER ASS'Y	FOR PIXUS 6500i, i6500
3	QA4-0336-000	N	1	BLOCK, PAPER FEED	FOR PIXUS 6100i, i6100
	QL2-0247-000	N	1	PAPER GUIDE ASS'Y	FOR PIXUS 6500i, i6500
4	QH4-4347-000		1	MOTOR, CARRIAGE	
5	QG4-0088-000		1	TIMING SENSOR UNIT	

FIGURE 9 PAPER FEED UNIT

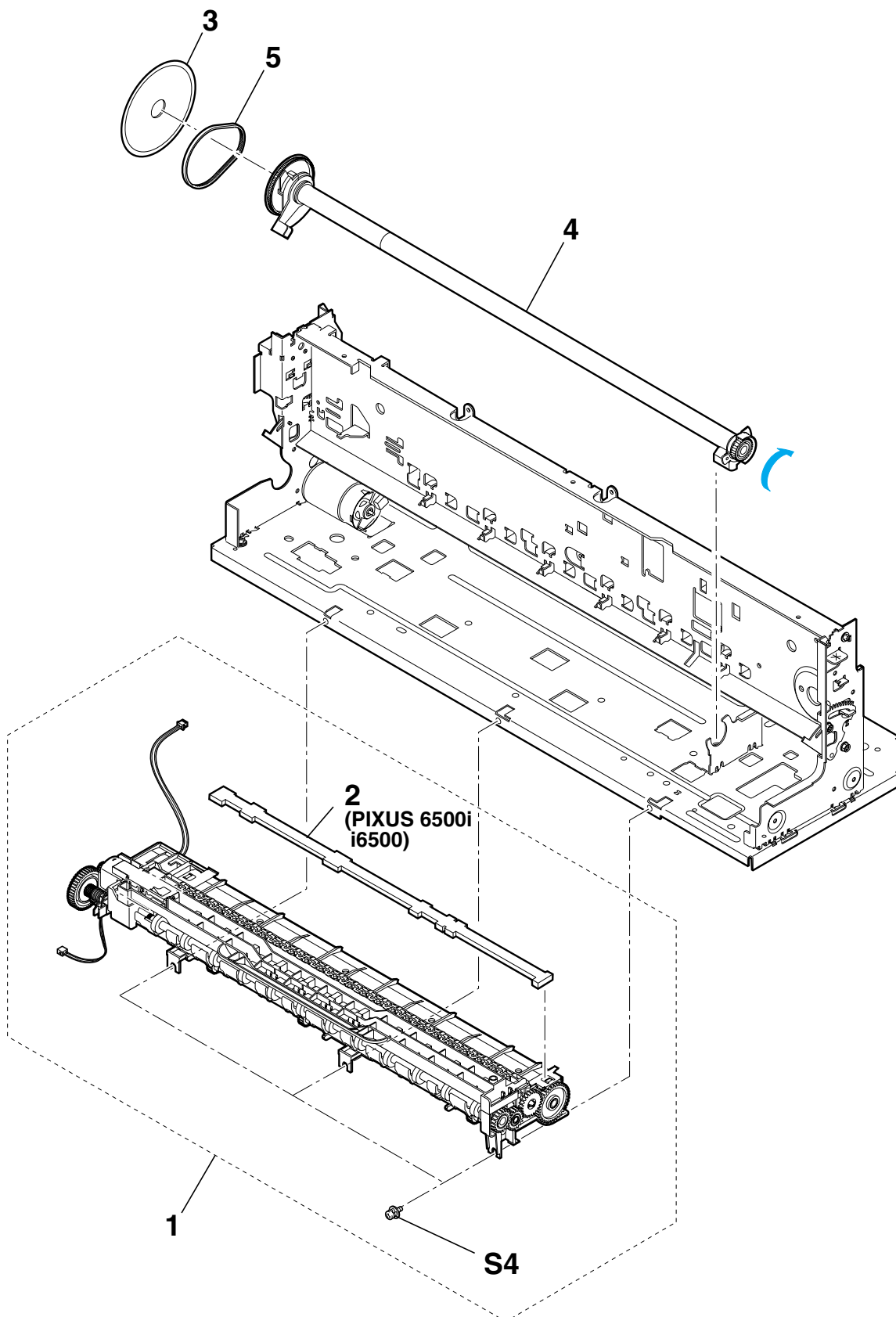


FIGURE & KEY NO.	PART NUMBER	R A N K	Q T Y	DESCRIPTION	REMARKS
9 - 1	QM2-0431-000		1	PLATEN UNIT	FOR PIXUS 6500i, i6500
	QM2-0442-000		1	PLATEN UNIT	FOR PIXUS 6100i, i6100
2	QC1-1601-000		1	ABSORBER, INK	FOR PIXUS 6500i, i6500
3	QA4-0026-000		1	FILM, TIMING SLIT DISK	
4	QF4-0025-000	N	1	FEED ROLLER ASS'Y	
5	QA4-0025-000		1	BELT, FEED ROLLER	

C. OPTIONS & CONSUMABLES

FIGURE 10 OPTION & CONSUMABLES

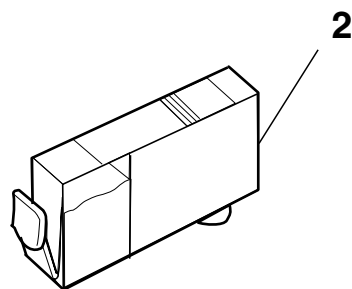
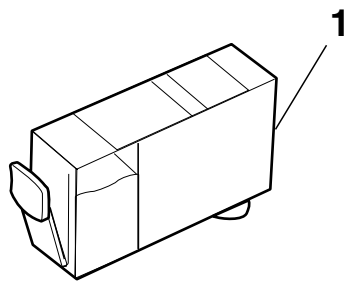


FIGURE & KEY NO.	PART NUMBER	R A N K	Q T Y	DESCRIPTION	REMARKS
10 - 1 2	NPN NPN NPN NPN		1 1 1 1	BLACK INK TANK BCI-3eBK CYAN INK TANK BCI-3eC MAGENTA INK TANK BCI-3eM YELLOW INK TANK BCI-3eY	CONSUMABLES CONSUMABLES CONSUMABLES CONSUMABLES

D. SCREWS & WASHERS LIST

FIGURE & KEY NO.	PART NUMBER	R A N K	Q T Y	DESCRIPTION	REMARKS
S - 1	XA9-1258-000			SCREW, TAP, WASHER HEAD, M3X12	
2	XB6-7300-605			SCREW, MACHINE, WASHER HEAD, M3x6	
3	XB1-2301-205			SCREW, MACHINE, M3X2	
4	XB2-4300-605			SCREW, W/WASHER, M3X6	
5	XB4-7300-605			SCREW, BH M3X6	
6	XB1-2300-405			SCREW, MACH.BH, M3X4	

This page intentionally left blank

FIGURE 11 TOOL

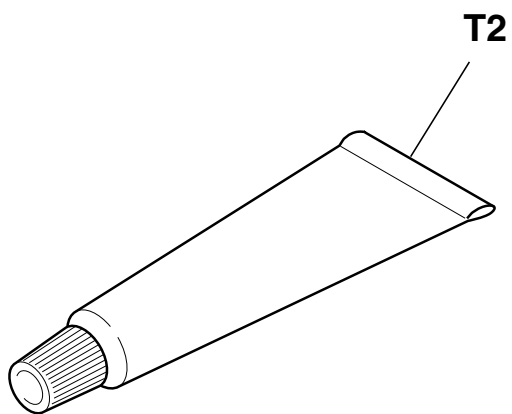
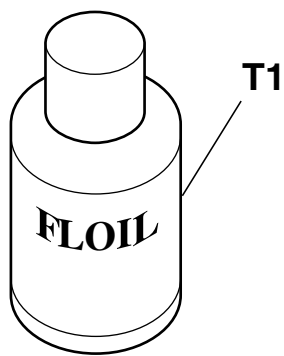


FIGURE & KEY NO.	PART NUMBER	R A N K	Q T Y	DESCRIPTION	REMARKS
T - 1 2	QY9-0057-000 CK-0562-000		1 1	LUBE, FLOIL KG107A, OIL GREASE, MOLYKOTE PG-641	

F. NUMERICAL INDEX

PART NUMBER	FIGURE & KEY NO.	DESCRIPTION	PART NUMBER	FIGURE & KEY NO.	DESCRIPTION
CK-0562-000	T - 2	GREASE, MOLYKOTE PG-641	XB1-2300-405	S - 6	SCREW, MACH.BH, M3X4
QA4-0018-000	7 - 9	SPRING, LEAF	XB1-2301-205	S - 3	SCREW, MACHINE, M3X2
QA4-0025-000	9 - 5	BELT, FEED ROLLER	XB2-4300-605	S - 4	SCREW, W/WASHER, M3X6
QA4-0026-000	9 - 3	FILM, TIMING SLIT DISK	XB4-7300-605	S - 5	SCREW, BH M3X6
QA4-0111-000	8 - 1	SPRING, TORSION	XB6-7300-605	S - 2	SCREW, MACHINE, WASHER HEAD, M3x6
QA4-0309-000	3 - 1	COVER, LOGIC BOARD			
QA4-0323-000	4 - 1	ABSORBER, INK			
QA4-0334-000	7 - 5	FILM, TIMING SLIT STRIP			
QA4-0335-000	7 - 1	FRAME, CARRIAGE GUIDE			
QA4-0336-000	8 - 3	BLOCK, PAPER FEED			
QA4-0364-000	3 - 2	STATIC ELININATOR			
QA4-0370-000	7 - 2	CLIP, SHAFT			
QA4-0371-000	7 - 6	SHAFT, CARRIAGE			
QA4-1403-000	7 - 10	GUARD BAR			
QB1-4013-000	7 - 3	CLIP, SHAFT			
QC1-1580-000	2 - 3	COVER, I/F			
QC1-1581-000	2 - 4	PLATE, MODEL NAME			
QC1-1582-000	2 - 4	PLATE, MODEL NAME			
QC1-1583-000	2 - 6	STOPPER, TRAY			
QC1-1601-000	9 - 2	ABSORBER, INK			
QC1-1615-000	2 - 4	PLATE, MODEL NAME			
QC1-1616-000	2 - 4	PLATE, MODEL NAME			
QF4-0004-000	7 - 8	IDLER, ROLLER ASS'Y			
QF4-0025-000	9 - 4	FEED ROLLER ASS'Y			
QG2-3348-000	4 - 2	DC CONNECTOR ASS'Y			
QG2-3352-000	5 - 3	PE SENSOR CONNECTOR ASS'Y			
QG2-3515-000	5 - 2	LOGIC BOARD ASS'Y			
QG2-3516-000	5 - 2	LOGIC BOARD ASS'Y			
QG4-0022-000	6 - 2	WIPER CLEANER ASS'Y			
QG4-0056-000	8 - 2	PRESSURE ROLLER ASS'Y			
QG4-0087-000	6 - 1	PURGE UNIT			
QG4-0088-000	8 - 5	TIMING SENSOR UNIT			
QG4-0089-000	7 - 4	CARRIAGE UNIT			
QH3-3411-000	3 - 3	AC ADAPTER: 100V-120V 50/60HZ			
QH3-3412-000	3 - 3	AC ADAPTER: 220V-240V 50/60HZ			
QH3-3467-000	3 - 3	AC ADAPTER: 220V-240V 50/60HZ			
QH4-4347-000	8 - 4	MOTOR, CARRIAGE			
QL2-0247-000	8 - 3	PAPER GUIDE ASS'Y			
QM2-0425-000	2 - 2	PAPER SUPPORT UNIT			
QM2-0426-000	2 - 1	OUT PUT TRAY UNIT			
QM2-0427-000	2 - 5	UPPER COVER ASS'Y			
QM2-0428-000	4 - 3	BOTTOM CASE UNIT			
QM2-0429-000	5 - 1	SHEET FEEDER UNIT			
QM2-0431-000	9 - 1	PLATEN UNIT			
QM2-0433-000	8 - 2	PRESSURE ROLLER ASS'Y			
QM2-0439-000	2 - 5	UPPER COVER ASS'Y			
QM2-0442-000	9 - 1	PLATEN UNIT			
QS4-2001-000	7 - 7	SPRING, COIL			
QY6-0034-000	1 - 1	PRINT HEAD			
QY9-0057-000	T - 1	LUBE, FLOIL KG107A, OIL			
WG8-5382-000	5 - 4	IC, TLP1242, PHOTO INTERRUPTER			
WT3-5121-000	3 - 6	CORD, POWER			
WT3-5122-000	3 - 4	CORD, POWER			
WT3-5132-000	3 - 5	CORD, POWER			
WT3-5133-000	3 - 7	CORD, POWER			
WT3-5159-000	3 - 4	CORD, POWER			
WT3-5180-000	3 - 4	CORD, POWER			
XA9-1258-000	S - 1	SCREW, TAP, WASHER HEAD, M3X12			

Canon