

PRODUCT(S):	SFP: PIXMA iP3000/4000/4000R/5000/6000D/8500 MFP: PIXMA MP750/760/780
AFFECTED:	All Units
DESCRIPTION:	5 Alternating Blinks (SFP) / ##356 (MFP) - ASF Cam Sensor Error
SOLUTION(S):	Adjust the Screws & Main Case Unit

Movement (i.e. from shipping) may cause the plastic guide to move away from the chassis. When this occurs, the gears cannot rotate properly causing a grinding noise and 5 alternating blinks (SFP) or ##356 (MFP) - ASF Cam Sensor Error.

PROCEDURES

- Step 1: Remove the Left and Right Covers and the Main Case Unit (main cover).
- Step 2: Remove the 4 mounting screws from the Chassis.
- Step 3: Remove the Main Unit from the Bottom Case.
- Step 4: Turn the Main Unit over (upside down) and place on work surface as shown in Figure 1.
- Step 5: Inspect the ASF section of the Main Unit for a gap between the white plastic guide and the Chassis (Figure 2). *Note:* The size of the gap varies. Even if the gap is not visible, complete the steps below.
- Step 6: Disconnect the appropriate cables and remove the Logic Board from the Chassis.
- Step 7: Loosen (do not remove) the 4 mounting screws (the mounting screws can be found behind the logic board) on the Chassis as shown in Figure 3.
- Step 8: Re-seat the white plastic guide so it sits flush against the Chassis. The tip of the white plastic guide should sit slightly inside the mounting screw hole. When seated correctly, the gap will no longer be present as shown in Figure 4.
- Step 9: Tighten the 4 mounting screws without causing the plastic guide to shift.
- Step 10: Reassemble the printer and retest.



FIGURE 1: PLASTIC GUIDE ON THE BOTTOM OF MAIN UNIT

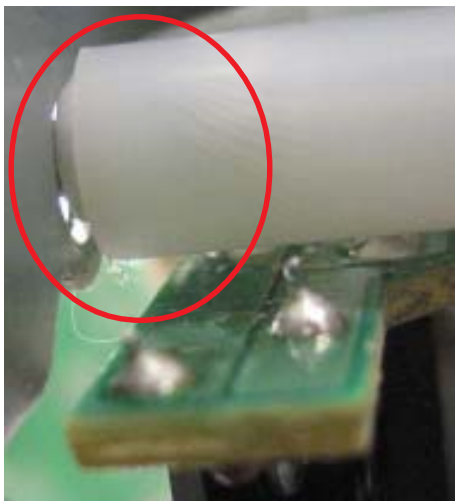


FIGURE 2: INCORRECT
GAP BETWEEN PLASTIC GUIDE & FRAME

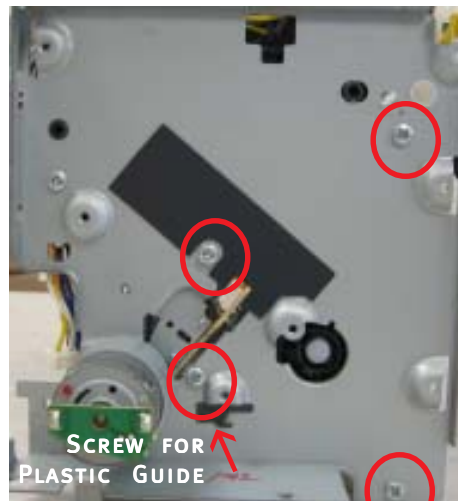


FIGURE 3: FOUR MOUNTING SCREWS
(RIGHT SIDE UP)

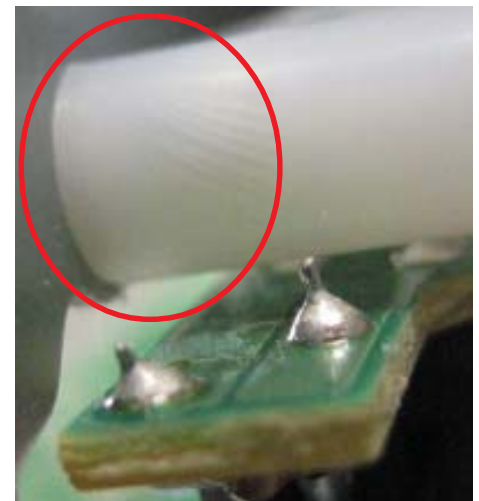


FIGURE 4: CORRECT
NO GAP BETWEEN PLASTIC GUIDE & FRAME