

# Local Service Organization Service Manual

---

S 35 i



---

SIEMENS INFORMATION AND COMMUNICATION MOBILE

---

## Table of Contents

C H A P T E R 1		Short Circuit Protection	12
Level 2 Service Guide		Charging	13
Introduction	1	S35i Mobile Phone Spare Parts Level 2	15
S35i Series Technical Information	2	Disassembling/Assembling the S35i	16
Accessories	4	Mobile Software Programming	22
General Information	5	Mobile Software Updating	22
S35i Series Exploded Diagram	7	Language Groups	23
Mechanical Concept	8	Customer Specific Initialization	25
Hardware Concept – Block diagram	9	International Mobile Equipment Identity	25
Hardware Description	10	Phone Unblocking	26
Power Supply Concept	11	Disclaimer	28
Over voltage Condition	11		
Battery – Charging	12		

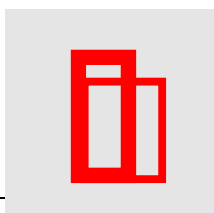
## Level 2 Service Guide

### Introduction

The document is intended to help you carry out repair up to Level 2 on the S35i series mobile phone.

The repair for international version and Asian variants are identical unless otherwise noted, therefore the description herein is confined to S35i only.

The S35i electrical design is similar to the C35 mobile phone – they use same PCB and electronics component for majority of the circuit. For testing and the accessories for the S35i please refer to the C35 service manual.



***All repairs have to be carried out in an environment set up according to ESD regulations defined in international standards.***

ESD procedure is available from your Service Manager. Ask for ASC/T001/98



## *S35 i Technical Information*

System	GSM Phase 2/Phase 2+, Dual Band EGSM 900, Class 4(2 Watt) GSM 1800, Class 1(1 Watt)
Operating Voltage	3.6V
Size(LxWxH)	118 x 46 x 21 mm(without antenna)
Volume	89cm <sup>3</sup> including battery (approx)
Weight	105g including battery (approx)
Battery(Standard)	Li-Ion, 600mAH (Standard)
Standby time <sup>1</sup>	60-220 hours (standard battery)
Talk time <sup>1</sup>	100-360 minutes (standard battery)
Charging Time	2 hours
SIM support	Plug in card 1.8 V or 3V
Antenna	Integrated
Speech codec	Triple rate <i>Enhance Full Rate</i> <i>Full Rate</i> <i>Half Rate</i>
Display	101 x 80 pixel graphical display with up to 6 lines 12 x 12 font size for Chinese
Keypad	12 numeric keys(10 numeric, #, *) 4 function keys(Send, End-ON/OFF, Menu, Phonebook) 2 multifunctional softkeys
Key Sound	Click/DTMF/None
Key Lock	Activation and Deactivation by #-key or Automatic.

---

<sup>1</sup> Actual time dependent on the network.

Dialing	10 redial numbers, Last 10 incoming with date stamp Last 10 outgoing calls Last 10 missed calls with date stamp
Ringer	On/Beep/Off Up to 42 melodies and 5 volume settings Melody Composer
Volume	Adjustable in 5 levels during call via softkey
Silent Alert	Built-in vibrator
Phone Book	Storage depends on the SIM card capacity Storage of up to 100 list in the phone (VIP)
SMS Support	MT, MO, CB Predictive Text Input, Tegic T9.
Supplementary Services	Call Forwarding, Call Hold, Call Wait, Multiparty Conference, CLIP, CLIR, AoCC AoCI, FDN, LND USSD and SAT.
Ciphering	A5/1 and A5/2 supported
PIN control	PIN 1 & 2 Code Control
Phone code	4 to 8 digit code
Network function	Automatic and manual network selection
Chipset	Siemens E – GOLD V 1.2
WAP Browser <sup>1</sup>	Version 1.1 (SMS &CSD)
Other Features	Clock / Alarm Alarm List <sup>2</sup> Built-in modem <sup>3</sup> Calculator <sup>4</sup> Currency Converter 4 Games
Voice memo	20 sec
Voice dialing	20
Tegic T9	Yes

---

<sup>1</sup> Only for Model S35i.

<sup>2</sup> Not available in S35 International version.

<sup>3</sup> Not available in S35 International version.

<sup>4</sup> Not available in S35 International version.

## *Accessories:*

1. Standard Battery	L36880-N4001-A100
2. Optional Battery	L36880-N4001-A101
3. Standard Charger	L36280-Z4- <u>CXXX</u> (Country Variant)
4. Travel Charger	L36880-N4001-A103 (EU) / A104 (UK) Similar to standard charger with an universal input voltage from 90 ~ 240V
4. Desk Top Charger	L36880-N4001-A102
5. Belt Clip	L36880-N4001-A113
6. Headset	L36880-N4001-A123
7. Antenna Cradle	L36880-N4001-A110
8. Car Charger Cable	L36880-N4001-A108
9. Car Kit Portable <sup>1</sup>	L36880-N3015-A117
10. Car Kit Comfort	L36880-N4001-A111
11. Car Handset <sup>2</sup>	L36880-N3015-A123
12. Designer Cases	L36880-N4001-A119
13. SoftDataLink 3.0	L36880-N4001-A122
14. Data Cable <sup>3</sup>	L36880-N3101-A102
15. Car Kit Professional Voice	L36880-N4001-A124
16. Data Cable Professional <sup>4</sup>	L36880-N3101-A112

---

<sup>1</sup> Same as C25(88)

<sup>2</sup> Same as C25(88)

<sup>3</sup> Same as C25(88)

<sup>4</sup> Same as C25(88)

## *General Information*

Due to different requirements of the markets, the S35i has different variants, which broadly classified under International version and Asian version. Marketing name for international version is S35i, whereas Asian version is named 3568i.

The different for ASIAN version is only mobile software.

The 3568i is equipped with a graphic display which enable the telephone to display CHINESE characters, either in Traditional font or Simplified font, beside the standard English.

## *Wireless Application Protocol, WAP.*

Wireless Application Protocol takes a client-server approach that uses the in-built micro-browser to make a request, in wireless markup language (WML), for information or service. The request is passed to a WAP Gateway which then retrieves the information from a Internet server, in HTML format, and translate it into WML. The requested information is then sent to from the WAP Gateway to WAP client (mobile) using the available and most appropriate mobile network bearer services.

## *Wireless Protocol Stack.*

Wireless Application Environment (WAE)
Wireless Session Protocol (WSP)
Wireless Transaction Protocol (WTP)
Wireless Transport Layer Security (WTLS)
Wireless Datagram Protocol (WDP)
Bearers e.g. Data, SMS, USSD

TABLE 1.1 WAP PROTOCOL STACK

### 1. Wireless Application Environment

Defines the user interface on the phone. WAE contains the WML,WML script and the wireless telephony application (WTA).

### 2. Wireless Session Protocol

Link the WAE to two session services – one connection oriented operating above the WTP and a connectionless service operating above WDP.

### 3. Wireless Transaction Protocol

Runs on top of the datagram service and part of the standard suite of TCP/IP protocols, to provide a simplified protocol suitable for low bandwidth mobile station.

### 4. Wireless Transport Layer Security

WTLS incorporates security features that are based upon the established Transport layer Security (TLS) protocol standard, that include data integrity checks, privacy on the WAP Gateway to client leg and authentication.



## 5. Wireless Datagram Protocol

Allows WAP to be bearer independent by adapting the transport layer of the underlying bearer. WDP presents a consistent data format to the higher layer of the WAP stack.

## S35 Series Mechanical Diagram

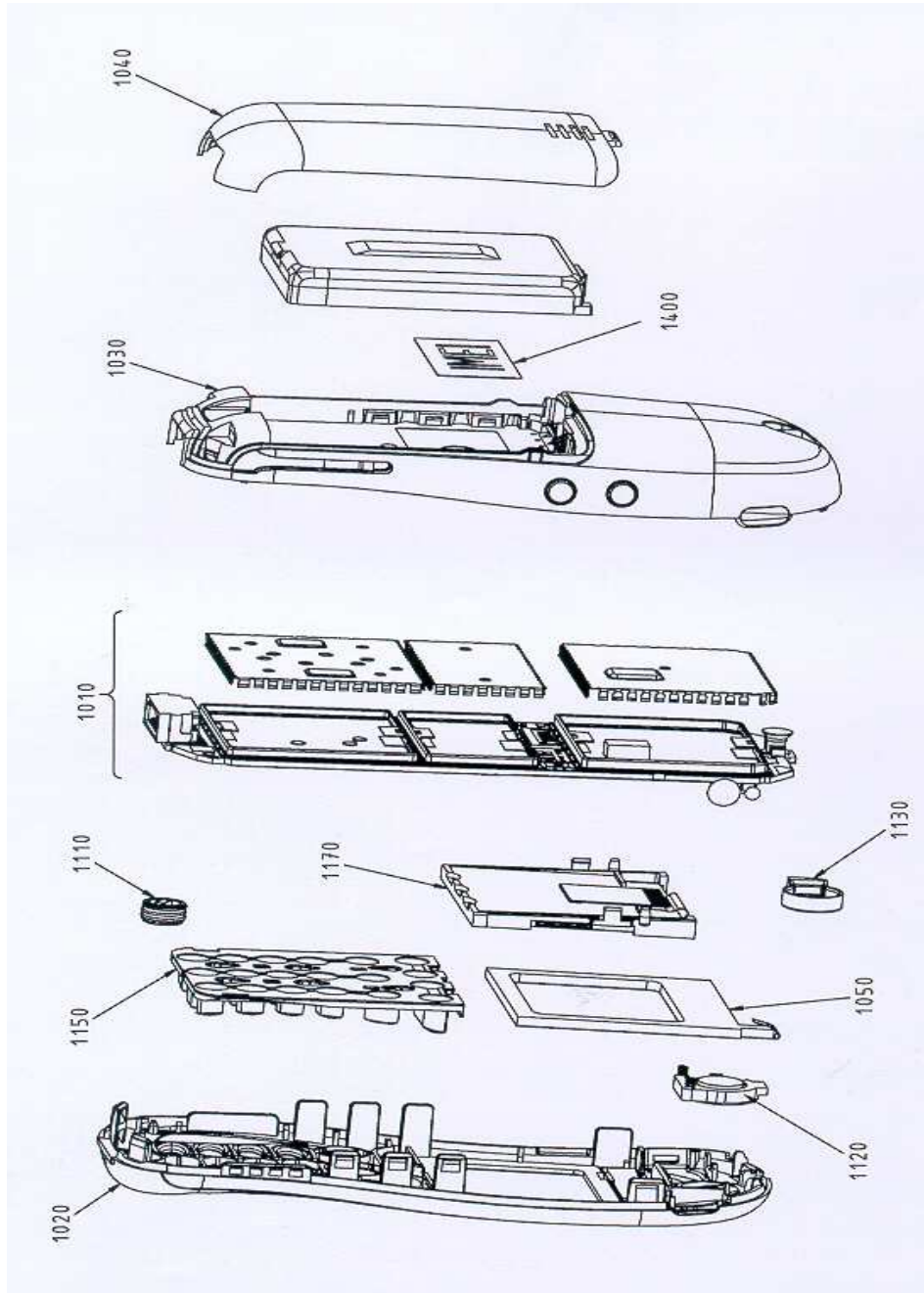
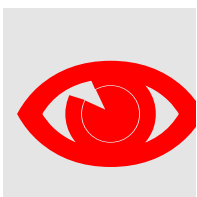


FIGURE 2.1 S35I MECHANICAL DIAGRAM.



Please take note that the number(s) used here IS NOT the part number,  
DO NOT used it in your spare parts purchase order.

**Always refer to the SERVICE PART PRICE LIST  
for your spare part order.**

## *Mechanical Concept*

***Note: All numbers refer to mechanical drawing in Figure 2.1.***

The mechanical concept of the S35i differs in various points from the one of the other Siemens mobile telephones.

The first thing you will experience is how the housing is locked. In S35i no screws are used to keep the housing closed. Also inside the telephone no screws are used anymore. To open the housing, which is kept closed by catches only, a special opening tool has been defined. Once the phone is open the catches will be damage and a new housing need to be used. *For details on disassembly tool please refer to Photo 2.3 in this chapter.*

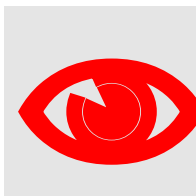
Inside, the S35i consists of just one board (1010) which carries display module(1170), control part and RF section of the mobile.

The display module (1170) is connected to the board by a flexible cable which is inserted into a plug. In case the display is defective electrically or mechanically it can be exchanged very easily.

S35i does have an external connector of a new type. Since S6 a so called "Molex"-connector was used, which also offered the possibility to connect an external antenna to it. The new "Lumberg"-connector which is used in S35i does not feature such a connection, because the connector for external antenna is located at the back side of the upper end of the mobile, close to the internal antenna (1130). As a consequence of this there is no need anymore for a RF cable mounted to the board nor for a RF plug on it to connect this cable. This improves RF-properties of the mobile and lowers production costs.

To be able to do measurements on and software update of the telephone, an adapter cable between Molex and Lumberg connector will be available. *See photos in Additional Tools of Chapter 3.*

S35i antenna (1130) is a integral part of the lower case shell (1030). The antenna can only be changed by open up the S35i phone and replace the housing.



***The S35i is a dual-band mobile operating on GSM900 and GSM1800, the antenna is an integral part of the lower housing.***

The keypad (1150), the microphone (1110) and the loudspeaker (1120) are mounted into the upper case shell (1020). Make sure that the microphone and the earphone contact springs are not dirty or damaged during repair process.



## *Hardware Description*

The handset consists of the following major integrated circuits:

### 1) **E-GOLD (PMB 2850)**

This IC is a combination of microprocessor and signal processor.

The microprocessor part of this component is responsible for controlling the keyboard, SIM-Card, Flash and RAM. Furthermore it controls the power up/power down of the RF module and sets the amplification of the PA.

The signal processor part of PMB 2800 is responsible for processing the Rx I/Q signals (filtering, equalizing, speech and channel decoding).

Furthermore it does the speech and channel encoding and the GSMK modulation of the Tx I/Q signals.

The coprocessor PMB 2805 is used to realize advanced features regarding coding of the speech signal. These are:

- Halfrate-Encoding
- Halfrate-Decoding
- Enhanced Fullrate Encoding
- Enhanced Fullrate Decoding
- Voice Activity Detection
- Comfort Noise

### 3) **GAIM (PMB 2906)**

The GAIM (GAIM = **G**SM **A**nalog **I**nterfacing **M**odule) provides the interface between the analogue signals (I/Q, voiceband, PA-control, charging control signals) and its digital representation.

### 4) **Transceiver Circuit (Bright II HD155124F)**

This circuit provides the following main functionalities:

- Low Noise Amplifier (LNA) with a fixed amplification of +20dB to amplify the input RF signal.
- Mixer to mix down the RF signal to the Intermediate Frequency (IF)
- Programmable IF amplifier with a dynamic range of 60dB ( -10dB ~+50dB in steps of 2dB).
- Mixer to mix down the IF signal to the baseband, generating and inphase (I) and a quadrature (Q) signal.
- Offset compensation for the I/Q signals.

This circuit provides the IF synthesizer, the I/Q modulator, prescalers to regulate the RF synthesizer and a buffer stage to feed the PA.

The antenna switch is mechanical, located in the connector for the external antenna.

## Power Supply Concept

The S35i has two main power inputs:

1. Battery voltage(3.6V) connected at the battery contact
2. Charging voltage(6.5V) delivered by the different charger type(see Accessory List) via the Lumberg connector at the bottom of the telephone.

Since the battery voltage is supplying the power supply ASIC, it is always needed to operate the phone. **You cannot switch on the handset if the battery voltage is not present.**

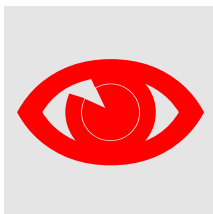
From the battery voltage, all other supply voltages are derived and controlled by the power supply ASIC.

The RF power amplifier is directly connect to the battery, a bad battery with high internal resistance can cause malfunction of the S35i phone.

The Logic module uses 1.92V, 2.65V & 2.9V generated by voltage regulators inside the ASIC.

Furthermore, the ASIC generates the supply voltage for the SIM card and the RESET signal for the logic devices.

The ASIC also checks the presence of the watchdog signal from the microprocessor and provides the switching on functionality (ON\_OFF button or Ignition signal).



***Wrong polarity or battery voltage setting that exceed the +6.5V could damage the phone.***

### *Over-voltage Condition*

- Battery voltage

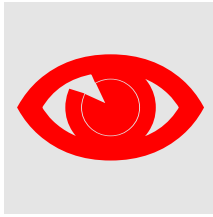
If the supply voltage rises above 6.2V, the phone will switch off and it cannot be switched on again before the voltage is lower than 6.2V.

If the supply voltage rises above 7V, the phone can be damaged.

- Charging Current

The charging current must not rise above 1A or a track fuse in the phone will blow. As a result charging the battery will no longer be possible.





***Be careful with NON-original SIEMENS accessories or chargers. Make sure that the charging current is limited to value below 1A.***

## *Battery – Charging*

S35i series uses a Lithium Ion 600mAH battery pack as standard battery. It also support the Nickel Metal Hyride (NiMH) 500mAH battery pack (For C35 phone).

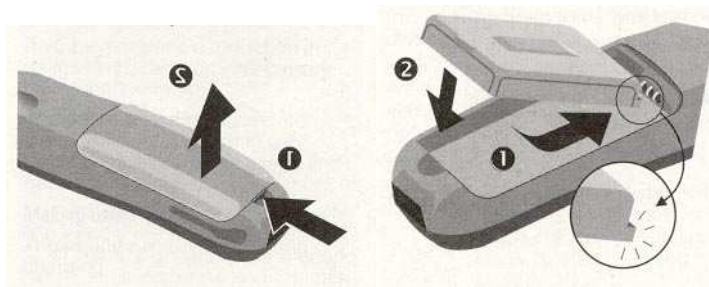
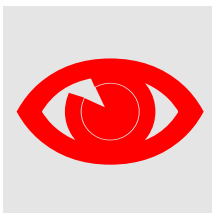


PHOTO 2.3 S35i SERIES INSERTING BATTERY.

For S35i, BATT+ has a voltage level from +3.0V to 5.5V, and a BATT\_TEMP contact is used for detecting abnormal increase in temperature of the battery.



***If the temperature is too high or too low, there is a high probability that the battery is not charged. To enable the charging process again, battery and phone needs to cools down or warm up. Battery replacement is not required.***

**Avoid shorting the battery terminals.**

## *Short Circuit Protection*

For the Nickel Metal Hydride battery, a polyswitch in the battery pack protecting the battery from short circuit and it should reset by itself after some time removing the short circuit.

For the Lithium Ion battery, it is short-circuit protected by an electronics fuse. The fuse will be activated in case a too high current is drawn. This fuse will **not reset** automatically.

The resetting of the battery fuse can be done with either of the following procedures:

1. Insert the battery into the S35i and then connect the rapid charger to the phone. Wait for approximately 10 second, then the mobile can be turned on again.
2. Plug the battery separately into the desktop charger. The fuse is reset immediately or,
3. Insert the battery into the S35i and put the phone into the desktop charger. Wait for approximately 10 second, then the mobile can be switched on.

## *Charging*

The battery can be charged when it is inserted into the phone. The charging process is completely controlled by the mobile. Charging can be done with any of the following accessory:

1. Rapid charger
2. Travel charger
3. Car charger
4. Desktop charger

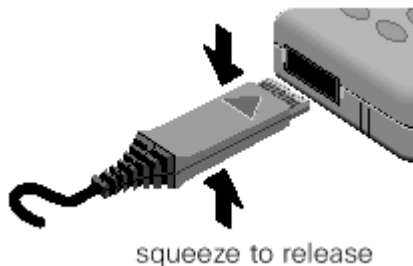


PHOTO 2.4 INSERT CHARGER

Photo 2.4 shows the correct way of inserting and removing the charger plug.

## *Deep Discharge Battery*

In case of a deeply discharged battery, the voltage of the battery is too low to operate the charging circuit and the display controller, the phone can not be turned on and the normal charging process can not be started. No charging symbol is visible in the display.

In this case, charging the battery is divided into two different steps, which have to be run subsequently:

### **a) Trickle charge for S35i Phone**

Trickle charge mode is automatically started if the battery voltage is below 3.0V when the charger is connected to the mobile. The charging current in Trickle mode is appr. 10mA.

Trickle charge mode has to last minimum until the battery voltage has exceeded 3.2V, then the phone will switch on and the charging icon appear. During trickle charge the charging symbol will not be visible and the telephone can not be turned on. This is because the battery voltage is too low to operate the telephone.

### **Action:**

Insert battery into handset and connect travel charger to the telephone. If within 4 hours the battery voltage is high enough again, the charging symbol will come up.

If the battery is discharged very deeply, the symbol may not come up and the trickle charge time possibly has to be extended up to 24 hours.



## b) Normal charge

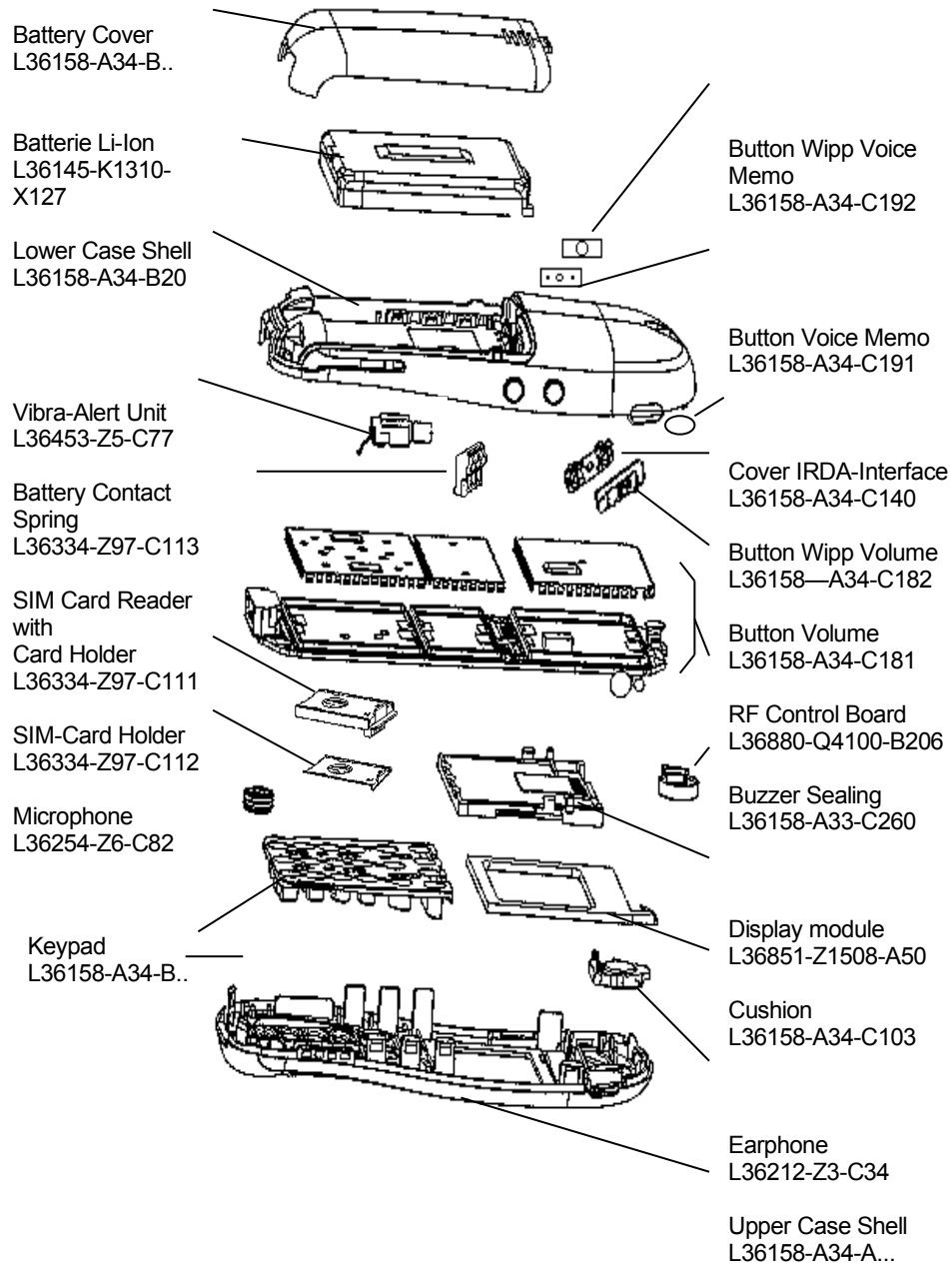
When the battery voltage is above the a.m. value (e.g. by trickle charge) the mobile will start the normal charging mode and show a charging symbol in the display. \* Always normal charge a new battery or a deep discharged battery for more then 12 hours before first use.

### **Action:**

Connect charger to the telephone (*see section on Charging*).

The charging symbol will come up as an indication that the normal charging process has been started by the mobile.

## Mobile Phone S35i Spare Parts Level 2



**L36880-A34-A.... see Spare Part List**

## *Disassemble the S35i*

A case opener is needed to disengage the latch of the S35i casing.

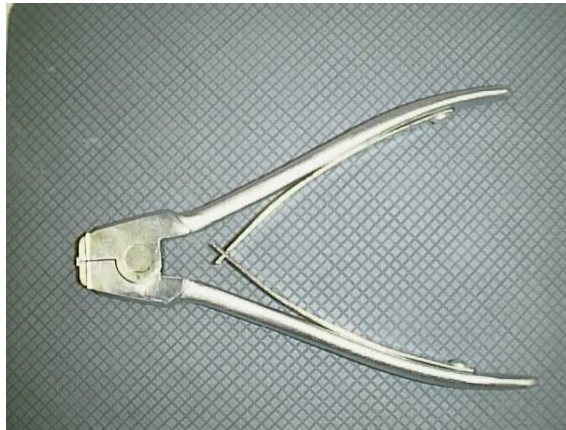
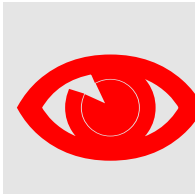


PHOTO 2.5 C35/S35i CASE OPENER



*The part number for this mandatory tool is **F30032-P46-A1***

*Refer to ANNEX B of Chapter 3 for Service Equipment List.*

### STEP 1 & 2:

Remove the battery cover then the battery as shown in PHOTO 2.6 . Open the housing with the opening tool and carefully pull the lower housing section off as illustrated in PHOTO 2.7 .



PHOTO 2.6 DISASSEMBLE S35i – STEP 1



PHOTO 2.7 DISASSEMBLE S35i – STEP 2

## STEP 3:

Use the Case Opener carefully disengaged the catches of the Lower housing and Upper housing to separate the housing and the Control Board Assembly as in PHOTO 2.8



PHOTO 2.8 DISASSEMBLE S35i – STEP 3

## *Disassemble/Assemble of the Lower Housing Assembly*

## STEP 1:

Open the housing with the opening tool and carefully pull the lower housing section off as illustrated in PHOTO 2.9



PHOTO 2.9 Lower Housing Assy – STEP 1

PHOTO 2.10 Disassembly Lower Housing – STEP 2

## STEP 2:

Remove in sequence by hand the SIM Card Holder, SIM Card Reader, Battery Contact Spring, Vibra-Alert Unit, left & right side button and the Infrared Cover as illustrated in PHOTO 2.10

For the assembly of the Lower Housing just reverse the sequence for the disassembly.

### *Dis-assemble/Assemble the Control Board Assembly*

## STEP 1:

Open the housing with the opening tool and carefully pull the lower housing section off as illustrated in PHOTO 2.11

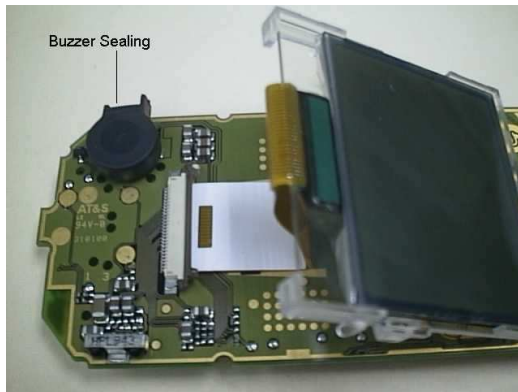


PHOTO 2.11 Control Board Assy – STEP 1

PHOTO 2.12 Disassemble Control Board Assy – STEP 2

## STEP 2:

Unlock the catches of the Display Module from the Control Board and move the display module to the lower part of the PCB. Lift up carefully the retaining clip of the display connector on the Control Board as illustrated in PHOTO 2.12

## STEP 3:

Remove the Display Module and the Buzzer Sealing from the Control Board as illustrated in PHOTO 2.13

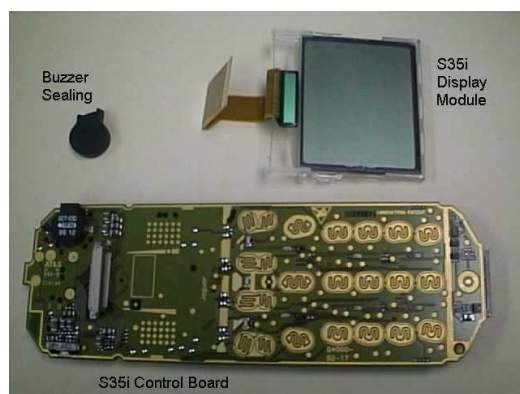


PHOTO 2.13 Disassemble Control Board Assy – STEP 2

For Remove/Install the display module, watch out for the catches on the display module and the guide hole of the PCB. For the assembly of the Control Board Assembly just reverse the sequence for the disassembly.

## Disassemble/Assemble of the Upper Housing Assembly

### STEP 1:

Open the housing with the opening tool and carefully pull the lower housing section off as illustrated in PHOTO 2.14



PHOTO 2.14 Upper Housing Assy – STEP 1

PHOTO 2.15 Disassemble Upper Housing – STEP 2

### STEP 2:

Remove the Keypad by hand and use a fine point metal tweezers to remove the microphone as illustrated in PHOTO 2.15



***The loudspeaker is glued to the upper housing section by a foam covered with glue on both sides. When you remove it, the foam will***

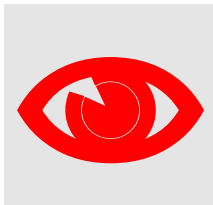
***be damaged. Please use new loudspeaker for assembling Upper Housing Assembly.***

For assembly of a new Upper Housing install a new earphone first, watch out for the orientation. For install of the other parts just reverse the sequence for the disassembly.

## *Assemble the S35i*

### STEP 1:

Check that the Lower Housing Assembly, Control Board Assembly and Upper Housing Assembly are in good order. Check if the Buzzer sealing was installed on the Control Board.



***New Upper and Lower Casing must be used. All contact pins must not be dirty, damaged or bent!***

***If any part is not O.K please replace it with a new part.***





PHOTO 2.16 ASSEMBLE S35i – STEP 1

PHOTO 2.17 ASSEMBLE S35i – STEP 2

## STEP 2:

Clear the dust on the display screen of the Display module and the Upper Housing by an air gun. Place the Control Board Assembly in the Upper Housing as illustrated in PHOTO 2.17.

Check and ensure the display is free from dust.

## STEP 3:

Close the device by putting on the Lower casing section as illustrated in PHOTO 2.18. Hold the phone and use both hands to close the casing starting from the catches at the top part near the antenna, watch out for leaving any finger marking on the display screen.



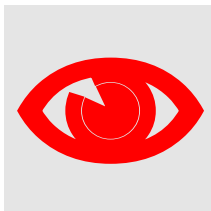
PHOTO 2.18 ASSEMBLE S35i – STEP 3

#### STEP 4:

Remove old IMEI label from the old housing using a hair-dryer for re-use of the IMEI label or paste the new IMEI label supplied for control board replacement. Insert the battery and put back the battery cover. Ready for testing.



PHOTO 2.19 ASSEMBLE S35i – STEP 4



***Do not place the phone on the table  
to close up the housing as the  
Antenna may be damage.***

**ALL CATCHES MUST BE ENGAGED COMPLETELY!**

## *Mobile Software Programming*

Model before C25 and S35i, software used for the mobile are similar except for their differences in the language group. Customer specific values (e.g. ringing tones etc) are seldom, but there were some, were included in the common mobile software.

S35i and C25 has changed. There is still a common mobile software available which is divided into language groups. However, this software does not contain the specific settings, such as ringing tones, greeting text, short dial list etc., required by the operator(s) or service provider(s). Therefore, it is not uncommon to have some menu item(s) differ in different variants or are not visible at all. These settings are stored in different memory area of the mobile and will be activated depending on the customer specific model or variant of the phone by a separate test step during the production process.

Due to this separation of common mobile software and customer specific initialization, it is possible to fulfill the demands of the market requiring customization and flexibility.

As a consequence the software programming process in the LSO is divided into two different steps as followed:

1. Software update to actual version and appropriate language group
2. Programming of CUSTOMER SPECIFIC INITIALIZATION

## *Mobile Software Updating*

The software of the mobile, S35i series, is loaded from a PC directly. Hardware interconnection between the mobile and the PC is shown in Figure 2.20

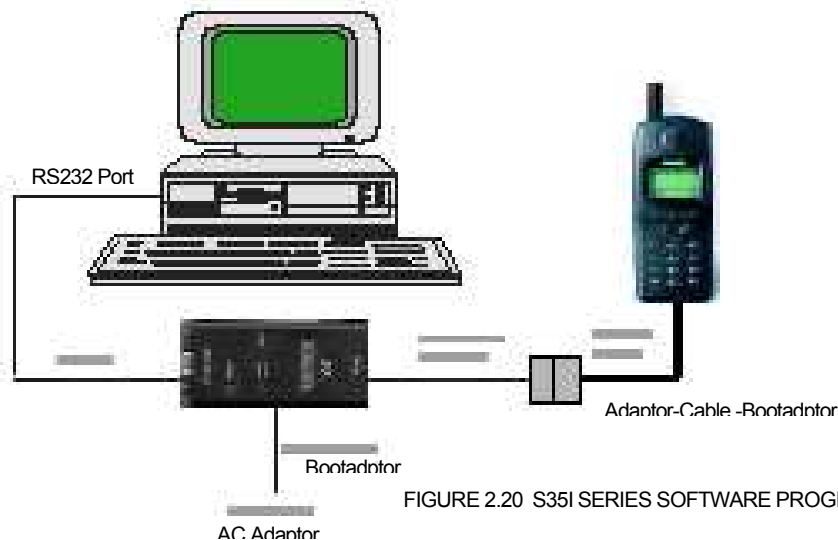


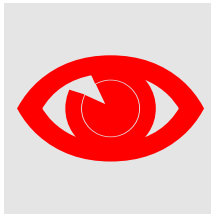
FIGURE 2.20 S35i SERIES SOFTWARE PROGRAMMING SETUP

Because of the new type of external connector used in S35i (Lumberg type) an additional adapter cable between mobile and boot adapter is required. Table 2.1 listed all the hardware requirements

If you use the S35i battery dummy, then make sure that the power supply voltage is correctly adjusted 4V and 3A rating.

Description	Part No.
Adapter-Cable-Bootadapter, C25/S25/P35	V30146-A5004-D
Boot Adapter	L24857-F1006-A30
IBM Compatible PC – Pentium	-

TABLE 2.1 EQUIPMENT LIST FOR SOFTWARE PROGRAMMING.



**SOFTWARE IS A DOS-BASED PROGRAM, IT IS ADVISABLE TO DO THE SOFTWARE UPGRADE IN DOS ENVIRONMENT.**

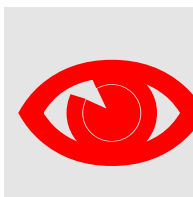
## Language Groups

There are over 20 languages for the S35i series in total. These languages are divided into groups as follows

<b>SLG 1</b>	<b>English, german, french, italian, dutch</b> , swedish, finnish, norwegian, danish
<b>SLG 2</b>	<b>English, swedish, finnish, norwegian, danish</b> , german, french, italian, dutch
<b>SLG 3</b>	<b>English, french, italian, spanish, portuguese</b> , german, catalan, dutch
<b>SLG 4</b>	<b>English, german</b> , hungarian, polish, russian, bulgarian, czech, slovakian
<b>SLG 5</b>	<b>English, french, italian</b> , arabic, greek, turkish, hebrew, bahasa, malaysia, bahasa indonesia
<b>SLG 6</b>	<b>English 2, chinese simplified, chinese traditional (For 3568i)</b>

**Note: Tegic T9 is supported in bold**

TABLE 2.2 SOFTWARE LANGUAGE GROUPS.



***This information is subject to change!***

***Contact your Service Manager for the order number of the right version of mobile software for your market.***

The mobile software file is named using this convention:

**S35\_(Version)(LG).EXE**

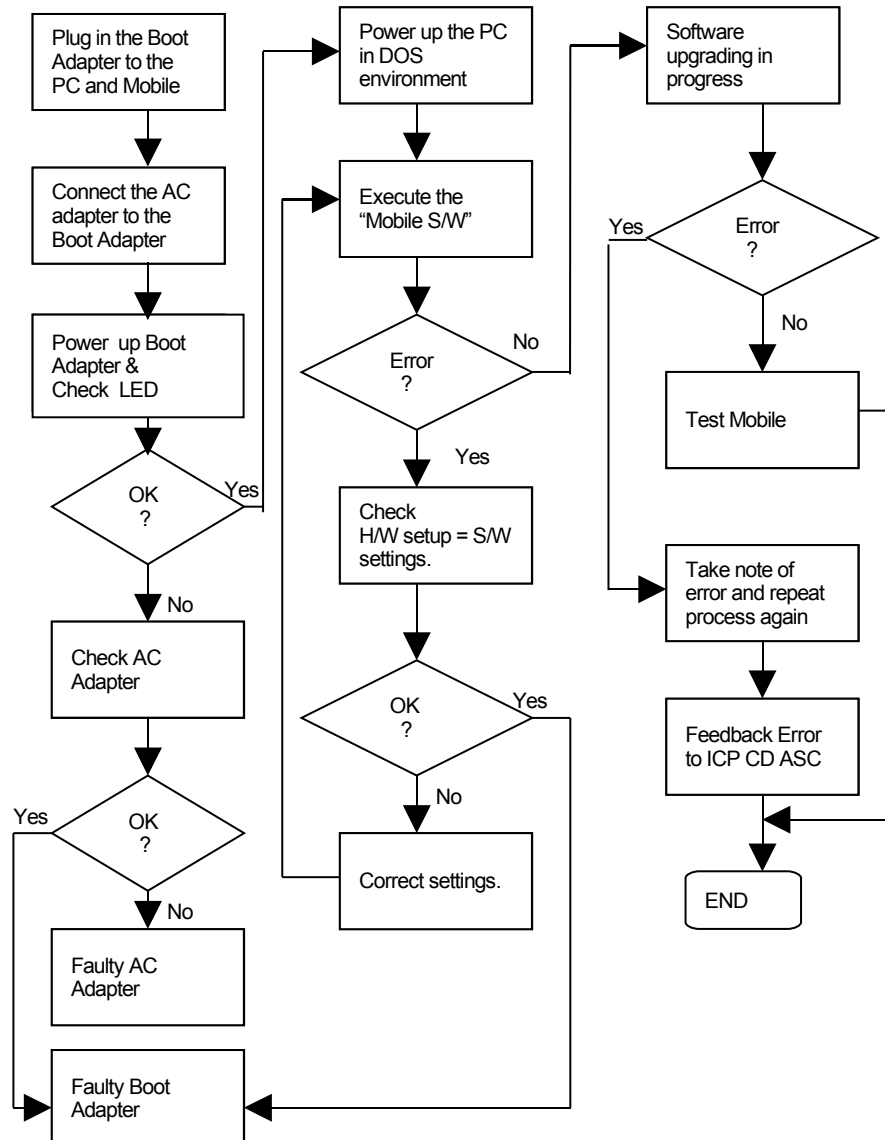
e.g. S35\_0501 → Version = 05; Language Group = 1  
S35\_0508 → Version = 05; Language Group = 8.

This executable file needs an definition or init file, named **SWUP.INI**, to define the message language preferences and the hardware communication port set up. The content of this file consists of the following text:

**Language=English**  
**COM=x**

Where x is the number that corresponds to the serial port that is used, either 1, 2 or 3.

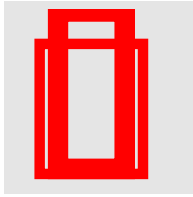
Flow chart 2.1 illustrates the software programming process.



FLOWCHART 2.1 SOFTWARE PROGRAMMING. PROCESS

*Customer Specific Initialization*

Refer to Customization guide



***LSO has to make sure that after repair the customer gets the mobile with correct variant specific initialization.***

***For more information about the configuration tool, refer to Service Information dated 30<sup>th</sup> April 1999, or contact your Service Manager.***

## *International Mobile Equipment Identity, IMEI*

The mobile equipment is uniquely identified by the International Mobile Equipment Identity, IMEI, which consists of 15 digits. Type approval granted to a type of mobile is allocated 6 digits. The final assembly code is used to identify the final assembly plant and is assigned with 2 digits. 6 digits have been allocated for the equipment serial number for manufacturer and the last digit is spare.

S35i series IMEI label is accessible by removing the battery. It is illustrated in Photo 2.34.

PHOTO 2.21 S35I SERIES IMEI LABEL



On this IMEI label, Siemens has also includes the date code for production or service, which conforms to the industrial standard DIN EN 60062. The date code comprises of 2 characters: first character denotes the Year and the second character denotes the Month.

Example: **KD**

Year	Date Code	Month	Date Code
<b>1999</b>	<b>L</b>	<b>December</b>	<b>D</b>
2000	M	January	1
2001	N	February	2

TABLE 2.3 DIN EN 60062 DATE CODE

## *Phone Unblocking*

When the phone is disable due to wrong entry of PHONECODE, it can be re-activated by entering the right unblocking code. This unblocking code is derived from the IMEI number of the mobile.

The unblocked code, also known as Master Phone Code, has to be entered in the following format:

**\* # 0 0 0 3 \* - - - - - #**

The Master Phone Code can be obtained by:

1. Fax to Siemens Hotline in Germany

Siemens AG  
ICP CD SH  
World Service Center, Bocholt, Germany  
+49-2871-91-3007

2. Fax to Siemens Hotline in Singapore

Siemens Advanced Engineering Pte Ltd  
ICP CD ASC  
Ms Ginny Siew  
+65-842-6641

3. Internet Solution

A password protected homepage where LSO can enter IMEI number of a disable phone. The generated Master Code will then be presented for unblocking purpose. This service is offered to all LSOs.

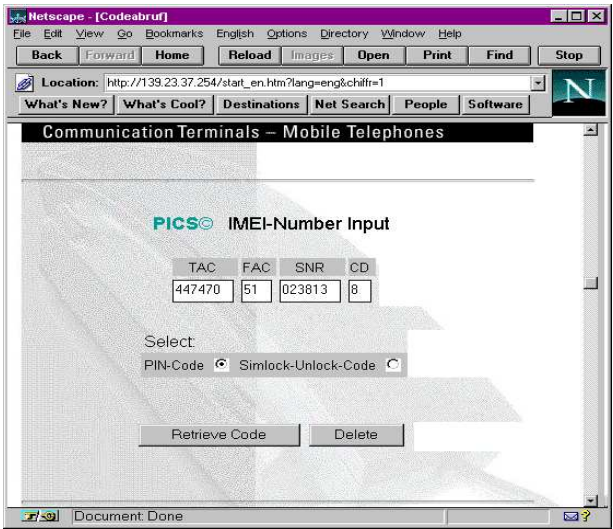


PHOTO 2.22 INTERNET PAGE

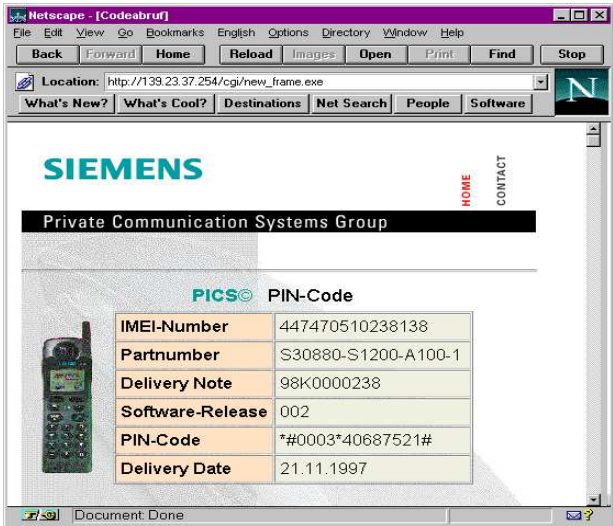
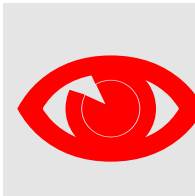


PHOTO 2.23 INTERNET PAGE: MASTER PHONE CODE



Contact your Service Manager for more information regarding setting up of the INTERNET SOLUTION & its installation procedure, ASC/T002/98.



*Disclaimer: This content is subjected to change without notice.*

Copyright © 1999 Siemens Advanced Engineering Pte Ltd  
ICP CD Asia Service Center,  
164, Kallang Way, #04-22, Kolam Ayer Industrial Estate, Singapore 349248  
Author: Tan Guan San.  
Phone +65-8454822 • Fax +65-8426641  
First Print: March, 00  
Revised Print: May,00  
Date Print: May 26, 2000

The reproduction and transmission of this document to unauthorized parties is not permitted without written authority. Offender will be liable for damages.