

Service
Service
Service



Philips Domestic Appliances and Personal Care

Service Manual

PRODUCT INFORMATION

Features

Iron

- Careeza soleplate
- Max steam output 90 grams/min
- Shot of steam (SOS)
- Cord length 1.9 m

Boiler

- Inox boiler
- Capacity 1 litre
- Stainless steel tray assy
- Ergonomic backrest
- Vario steam
- Steam ready light indicator
- Anti-scaling funnel

Safety Information

- This product meets the requirements regarding interference suppression on radio and TV.
- After the product has been repaired, it should function properly and has to meet the safety requirements as officially laid down at this moment.

TECHNICAL INFORMATION

Voltage : 220 - 240 V

Frequency : 50 - 60 Hz

Power consumption : Iron : 800 W
Boiler : 1200 W
Pressure : 3.5 bar

Dimension (F-box) : 41 x 38 x 20 cm

Weight : 3850 grams

Water advice : Suitable for tap water use. However if the tap water in your area is very hard, we advise you to mix it with a equal portion of distilled water or to use distilled water only.

Soleplate

Careeza is a multi layer chemical substance that gives an excellent gliding over various fabrics and better care for the garments.

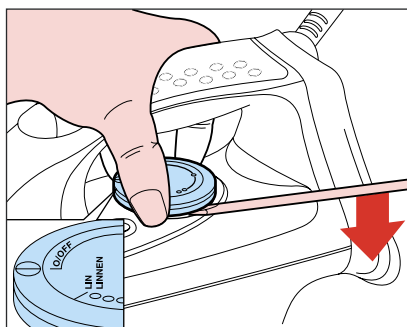
Vario steam

The vario steam function allows user to have control over the steam rate and this prevent over moisturising the cloth.

Anti calc

The anti calc is integrated in the funnel and softens the water that goes into the boiler.

REPLACE DIAL 1



REPLACE BACKPLATE 2

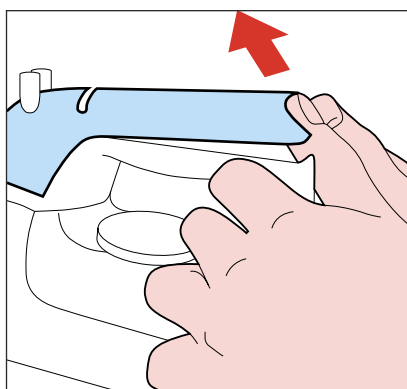
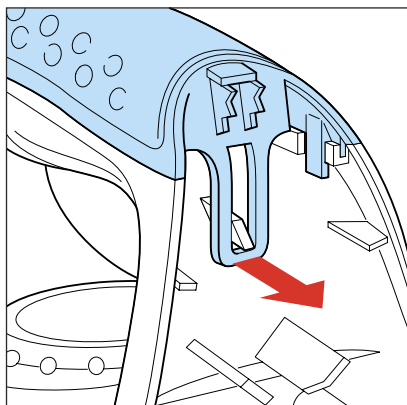
- disassemble DIAL 1
- remove screw A
- remove connection
- remove hose

REPLACE INLAY 3

STEAM KNOB 4

IRON LAMP 5

MICRO SWITCH 6



REPLACE IRON HANDLE 7

- disassemble DIAL 1
- remove screw A
- remove connection
- remove hose
- disassemble BACKPLATE 2
- disassemble INLAY 3
- STEAM KNOB 4
- IRON LAMP 5
- MICRO SWITCH 6
- remove screw B (3x)

REPLACE
INTERMEDIATE CABLE 8

SWIVEL 9

DEVIATOR ASSY 10

THERMOSTAT BUSH 11

- disassemble DIAL 1
- remove screw A
- remove connection
- remove hose
- disassemble BACKPLATE 2
- disassemble INLAY 3
- STEAM KNOB 4
- IRON LAMP 5
- MICRO SWITCH 6
- remove screw B (3x)
- disassemble IRON HANDLE 7

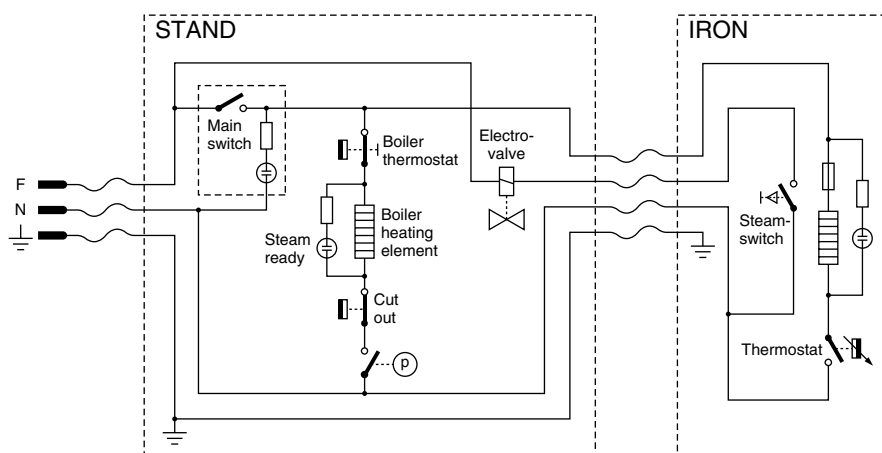
REPLACE IRON SKIRT 12

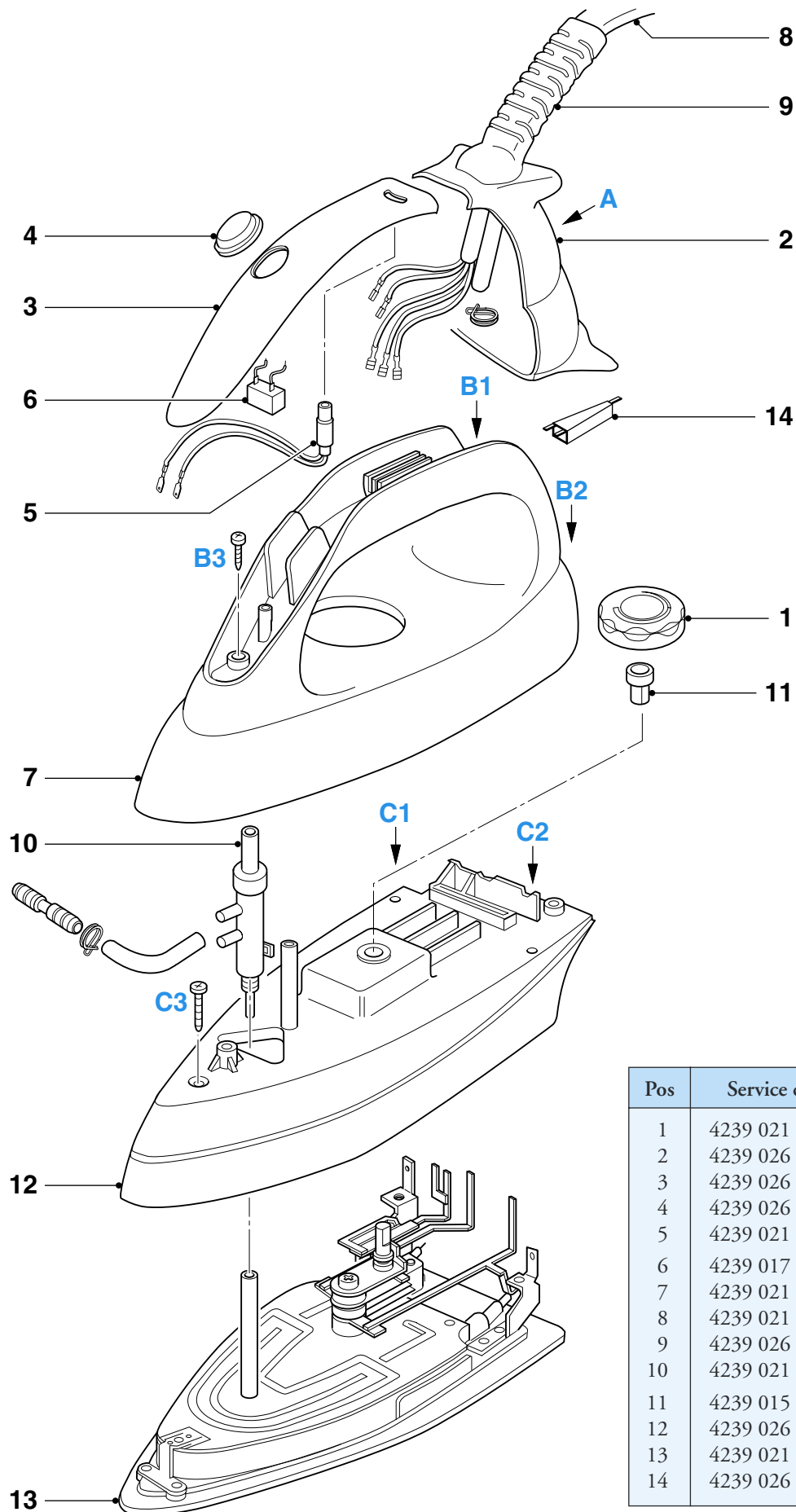
SOLEPLATE UNIT 13

- disassemble DIAL 1
- remove screw A
- remove connection
- remove hose
- disassemble BACKPLATE 2
- disassemble INLAY 3
- STEAM KNOB 4
- IRON LAMP 5
- MICRO SWITCH 6
- remove screw B (3x)
- disassemble IRON HANDLE 7
- disassemble INTERMEDIATE CABLE 8
- SWIVEL 9
- DEVIATOR ASSY 10
- THERMOSTAT BUSH 11
- remove screw C (3x)

REPAIR INSTRUCTIONS - IRON

- For disassembly, you will need a Torx screwdriver: 362 TR T20 x 100

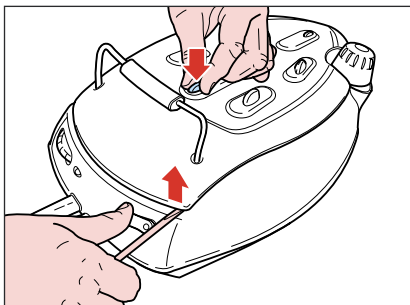




| Pos | Service code | Description |
|-----|----------------|----------------------|
| 1 | 4239 021 19670 | Dial |
| 2 | 4239 026 15690 | Backplate |
| 3 | 4239 026 15680 | Inlay |
| 4 | 4239 026 15670 | Jet of steam knob |
| 5 | 4239 021 19630 | Iron Lamp |
| 6 | 4239 017 08950 | Micro switch |
| 7 | 4239 021 19660 | Iron Handle |
| 8 | 4239 021 19570 | Intermediate Cord |
| 9 | 4239 026 15580 | Swivel |
| 10 | 4239 021 19620 | Steam deviator assy |
| 11 | 4239 015 98410 | Thermostat bush |
| 12 | 4239 026 15620 | Iron skirt |
| 13 | 4239 021 19510 | Soleplate unit |
| 14 | 4239 026 15650 | Electrovalve trigger |

SAFETY CAP 21

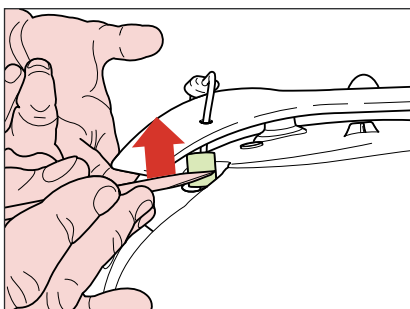
COMPLETE TRAY 22



Press tray anchorage rubber 23 through the tray

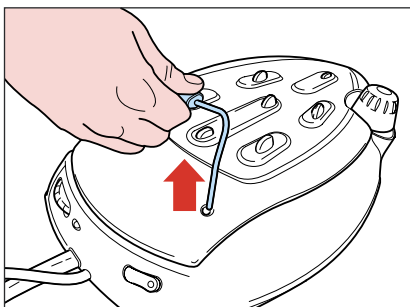
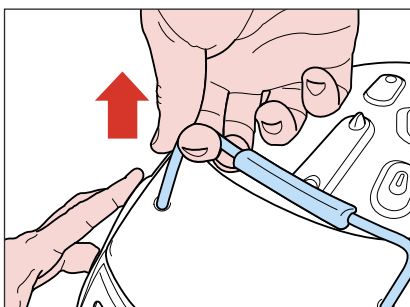
BACK REST ASSY 34

HOSE CLAMP 35



With tray lifted, use a screw driver to upwardly unplug hose clamps at the foot of back rest.

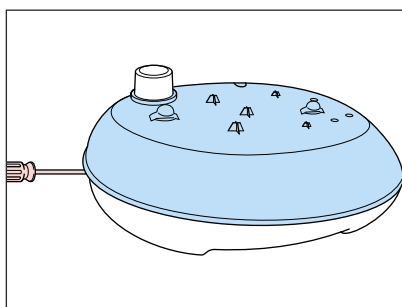
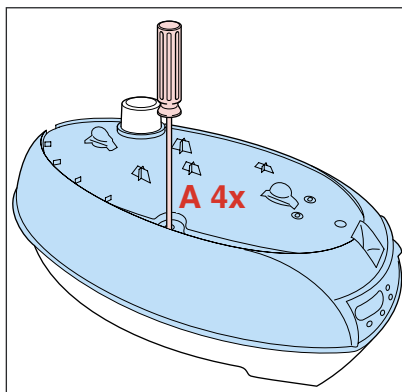
Note: Hose clamps **MUST BE** unplugged before back rest can be removed.



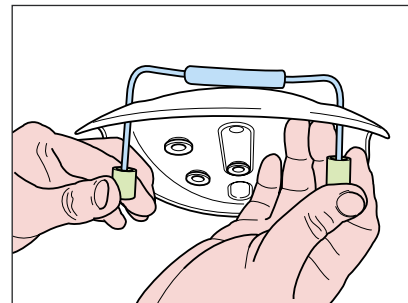
When both hose clamps are unplugged, remove back rest by pulling one leg first, then the other leg.

SUPERIOR STAND
PRINTED 32

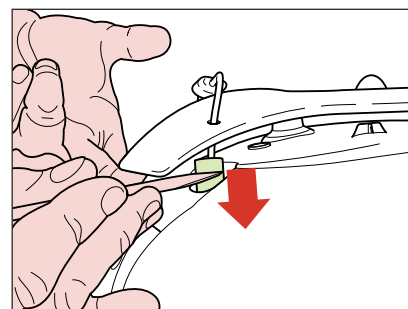
Remove screws A (4x)



Remove the SUPERIOR STAND and you will see the respective parts of the Boiler.

REASSEMBLY
COMPLETE TRAY 22

Insert back rest through the complete tray, hose clamps added to the legs of the back rest as shown above.

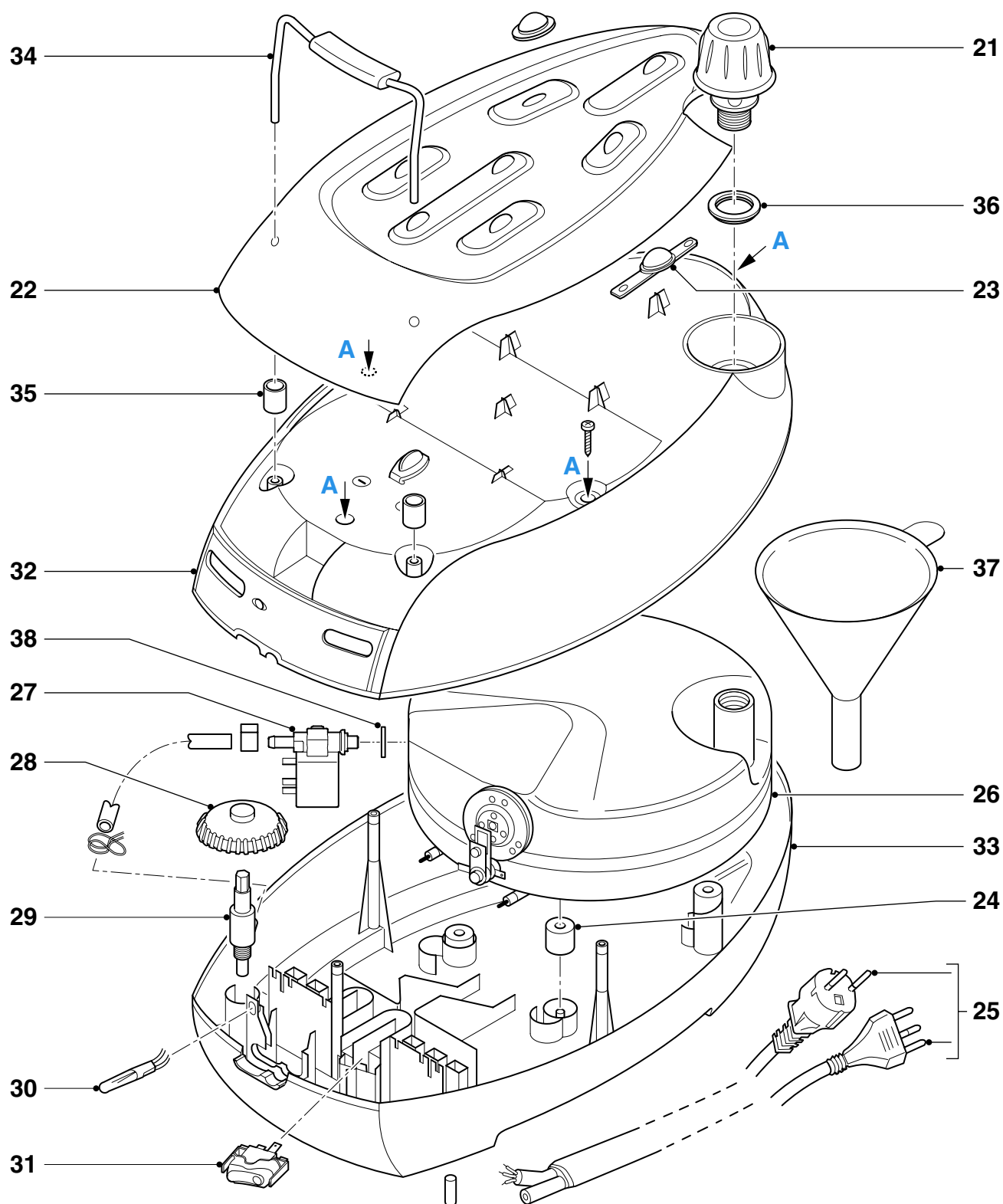


REMEMBER to plug in the hose clamps after inserting back rest to the superior stand.

Note: The hose clamps lock the back rest into position.

REPAIR INSTRUCTIONS - STAND

- For disassembly, you will need a Torx screwdriver 362 TR T20 x 100
- Be careful of the sharp edges of the stainless steel tray assy. Use a **thick glove** when removing the tray assy.
- To avoid damage to the sealings and components of the boiler, **NEVER** clean the boiler with vinegar, descaling agent or other chemicals.
- The boiler does not contain serviceable parts. Never disassemble and service any components on the boiler assy.
- The boiler is required to be rinsed after every 10 times usage.
- **ALWAYS** replaced boiler assy (Pos 26) when
 - mechanical safety valve at the cap has been activated
 - thermal fuse/thermostat at boiler bottom is open



| Pos | Service code | Description |
|-----|----------------|------------------------------------|
| 21 | 4239 026 15630 | Safety cap |
| 22 | 4239 021 19590 | Complete tray |
| 23 | 4239 015 55310 | Tray rubber foot |
| 24 | 4239 015 55280 | Boiler rubber foot |
| 25 | 4239 000 09150 | Intermediate supply cable (Europe) |
| | 4239 000 09260 | Intermediate supply cable (Italy) |
| 26 | 4239 021 19550 | Inox boiler unit |
| 27 | 4239 010 08870 | Electrovalve |
| 28 | 4239 026 15610 | Steam Dial |
| 29 | 4239 021 19610 | Steam regulator |

| Pos | Service code | Description |
|-----|----------------|-----------------------|
| 30 | 4239 017 08960 | Lamp |
| 31 | 4239 017 08810 | Main switch |
| 32 | 4239 021 19580 | Superior stand |
| 33 | 4239 026 15770 | Inferior stand |
| 34 | 4239 021 19650 | Back rest assy |
| 35 | 4239 026 00230 | Hose clamp |
| 36 | 4239 015 55300 | Filling hole gasket |
| 37 | 4239 021 19680 | Anti calc funnel assy |
| 38 | 4239 017 09151 | Teflon ring |