



Philips Domestic Appliances and Personal Care

Service Manual

PRODUCT INFORMATION

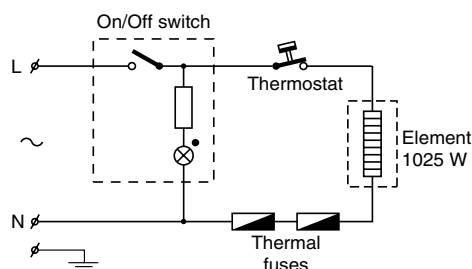
- This product meets the requirements regarding interference suppression on radio and TV.
- After the product has been repaired, it should function properly and has to meet the safety requirements as officially laid down at this moment.

TECHNICAL INFORMATION

- Voltage : 120 V
- Frequency : 60 Hz
- Power consumption : 1025 W
- Contents jug : 1800 cc
- Coloursetting : White
- Filter size : 1 x 4
- Thermostat switch-off temp : 162 °C
- Fuse cut-off temp : 240 °C
- SAP coding : HD7534/54

DISASSEMBLY- AND RE-ASSEMBLY ADVISE

- No specific issues.



REPAIR INSTRUCTION

- **Electrical circuit**
When the appliance does not work, check the electrical circuit. If the thermal fuse or thermostat prove defective, the complete pump unit has to be replaced.

- **De-scaling**
If the water system is nearly or less clogged by scale then operate the coffeemaker a few times with vinegar or with a 10-15% solution of either vinegar-acid, citric acid or tartaric acid, into cold tap water.

Do not use other de-scaling agents as these may harm the appliance.

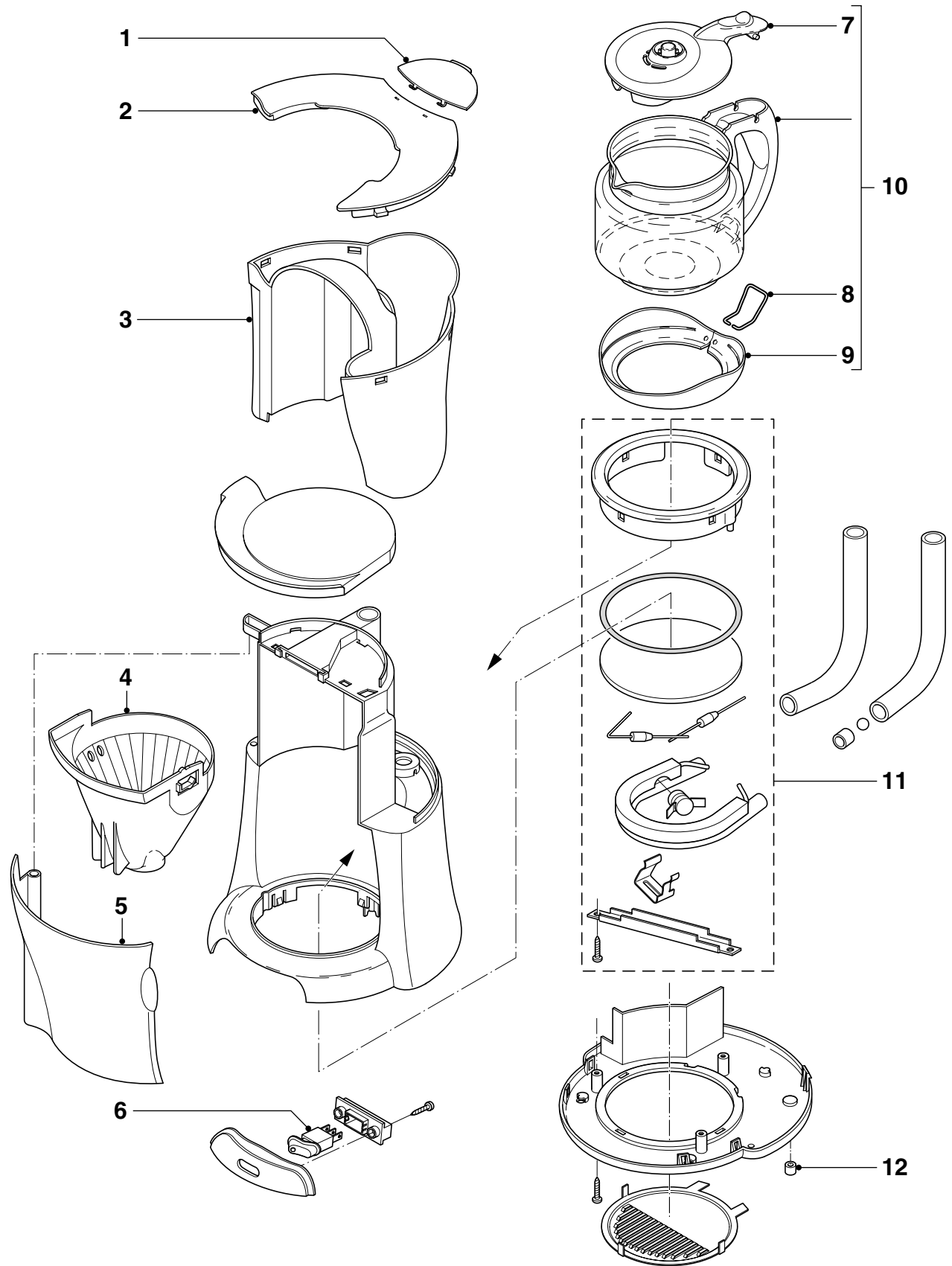
If this procedure does not restore the function, then switch off the coffeemaker when the acid has passed through during appr. 3 min. Keep the appliance in this condition overnight and continue/repeat the cleaning operation. After the de-scaling procedure, operate the coffeemaker twice with tap water in order to rinse away any residual substances.

OPTIONAL (accessories)

- Commercial trade number : HD7974 (White)

EXPLODED VIEW & PARTS LIST

HD7534/54



| Pos | Service code | Description |
|-----|----------------|--------------------|
| 1 | 9965 000 16815 | Door lid watertank |
| 2 | 9965 000 16816 | Lid water tank |
| 3 | 9965 000 16817 | Watertank assy |
| 4 | 9965 000 16818 | Filter assy |
| 5 | 9965 000 16819 | Filter cover |
| 6 | 9965 000 16820 | Switch |

| Pos | Service code | Description |
|-----|----------------|-----------------------------|
| 7 | 9965 000 16821 | Jug lid white |
| 8 | 9965 000 16822 | Carafe clamp |
| 9 | 9965 000 16823 | Bumper, white |
| 10 | 9965 000 16824 | Jug assy (Canadian version) |
| 11 | 9965 000 16825 | Heater assy complete |
| 12 | 9965 000 16826 | Rubber foot |