



Philips Domestic Appliances and Personal Care

Service Manual 4322 277 00369 is herewith cancelled

Service Manual

PRODUCT INFORMATION

	Battery type	Color setting	Operation time (fully charged)
HR 6070	NiCd	Antique white + Blue	>6 minutes
HR 6071	NiMH	Antique white + Blue	>11 minutes

TECHNICAL SPECIFICATION

Adapter AC / AC	: 230V / 7V AC
Rechargeable batteries	: 4 x 1.2V
Charge indicator	: LED
Dust capacity	: 0.45 Liter
Weight	: 1 kg
Dimensions	: 77 x 15 x 11 cm
Cord length	: 1.8 m

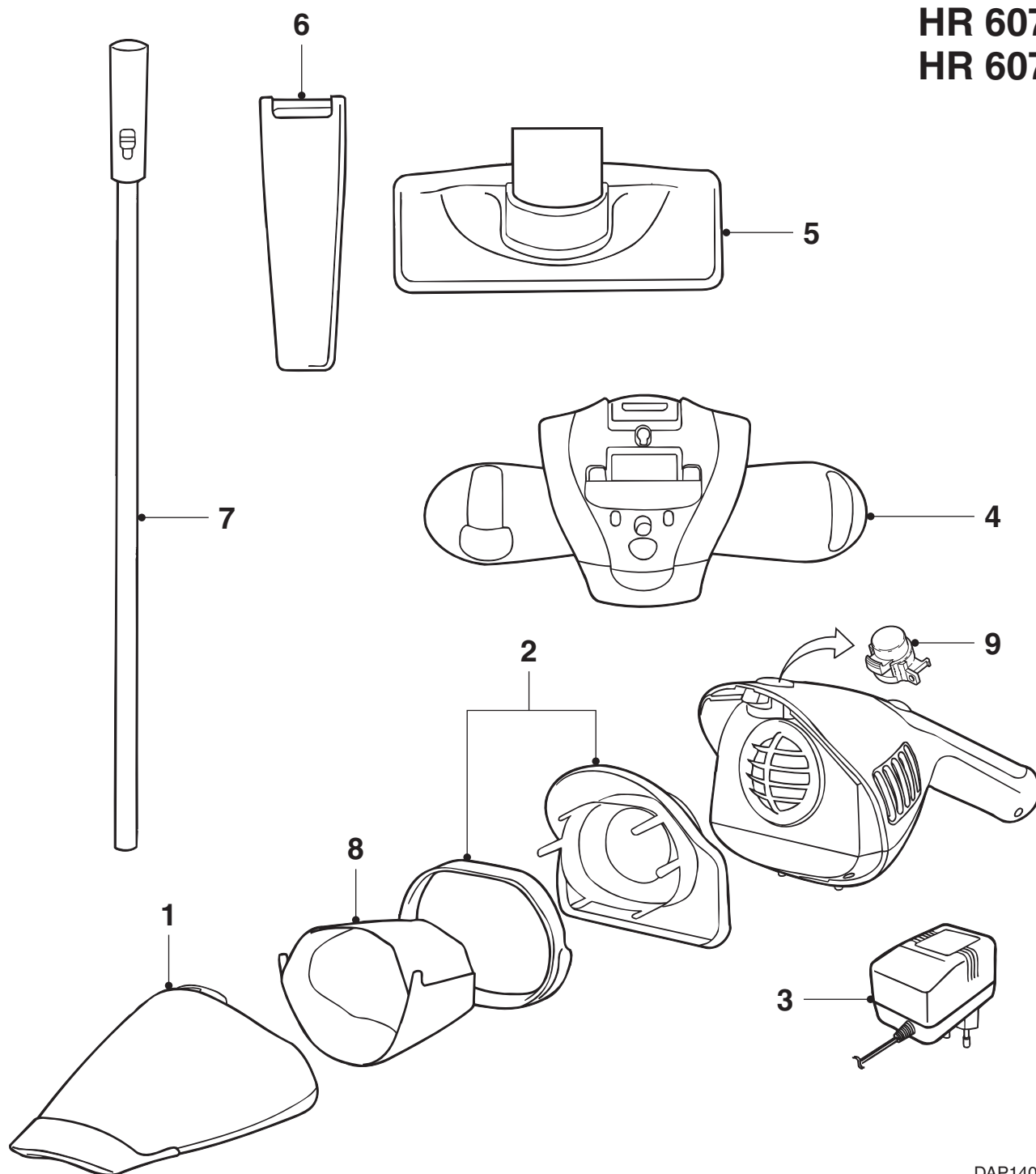
SERVICE INFORMATION

- Washable permanent filter is available under type number HR6934.
- The rechargeable batteries contained substances, which may pollute the environment. Dispose unused cells at especially assigned places.
- If a repair has been executed, ensure that all the functions of the appliance are working correctly.

This product meets the requirements regarding interference suppression on radio and TV.

After the product has been repaired, it should function properly and has to meet the safety requirements as officially laid down at this moment.

HR 6070 HR 6071



DAP1409

Item	Description	Service code
1	Dust container	9965 000 06423
2	Filter holder	9965 000 06424
3	Adapter - EU	9965 000 06425
	Adapter - UK	9965 000 06426
	Adapter - Taiwan	9965 000 06427
	Adapter - Korea	9965 000 06428
4	Holder	9965 000 06429
5	Floor nozzle	9965 000 06430
6	Crevice tool	9965 000 06431
7	Extension pole	9965 000 06510
8	Dust bag HR 6934	9965 000 03256
9	Jack release button assy	9965 000 12781