

Service
Service
Service



Philips Domestic Appliances and Personal Care

Service Manual

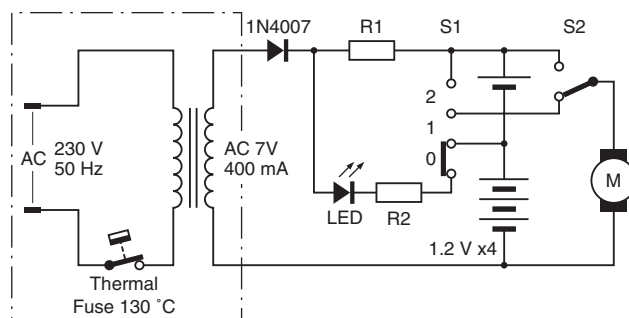
PRODUCT INFORMATION

Adapter AC / AC	: 230 V / 7 V AC - 400 mA
Rechargeable batteries	: 4 x 1.2V
Charge indicator	: LED
Dry dust cap capacity	: 0.45 Liters
Wet dust cap capacity	: 0.1 Liters
Switch positions	: 0 - 1 - 2
Weight	: 1 kg
Dimensions	: 77 x 15 x 11 cm
Cord length	: 1.8 m
Air flow	: 0.57 m ³ / minute

SERVICE INFORMATION

- Washable permanent filter is available under type number FC 8036 (8838 036 01010).
- The rechargeable batteries contained substances, which may pollute the environment. Dispose unused cells at especially assigned places.
- If a repair has been executed, ensure that all the functions of the appliance are working correctly.
- Operating time is defined as the time it takes to discharge 50 % of the nominal capacity of the batteries.

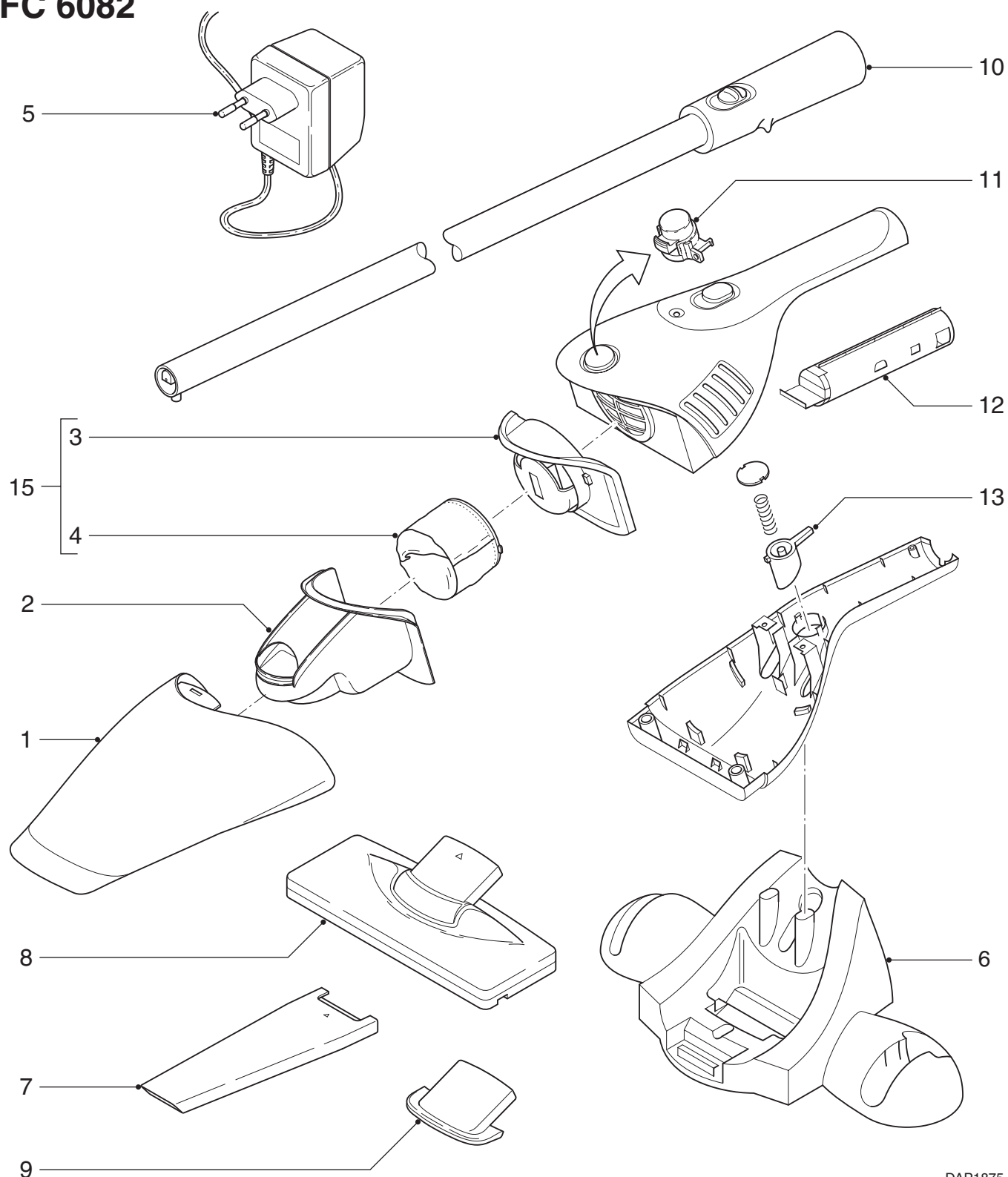
	Battery type	Colour setting	Operation time (fully charged)
FC 6082/01	NiCd 4 x 1600 mA	Bordeaux	> 10 minutes
FC 6082/02	NiMH 4 x 2200 mA	Bordeaux	> 15 minutes



This product meets the requirements regarding interference suppression on radio and TV.

After the product has been repaired, it should function properly and has to meet the safety requirements as officially laid down at this moment.

FC 6082



DAP1875

Item	Description	Service code	Item	Description	Service code
1	Dust container	9965 000 10812	7	Crevice nozzle	9965 000 10810
2	Deflector	9965 000 10813	8	Floor nozzle	9965 000 10809
3	Filter holder	9965 000 10814	9	Squeegee	9965 000 10815
4	Filter dry/wet	9965 000 10795	10	Extension pole	9965 000 10811
5	Adapter - EU	9965 000 06425	11	Jack release button assy	9965 000 12781
	Adapter - UK	9965 000 06426	12	Bush	9965 000 10452
	Adapter - Taiwan	9965 000 06427	13	Release button	9965 000 10453
	Adapter - Korea	9965 000 06428	15	Filter assy	9965 000 13460
6	Wall holder	9965 000 10808		Dry/wet filter set (2 pcs)	8838 036 01010