

Service
Service
Service



Philips Domestic Appliances and Personal Care

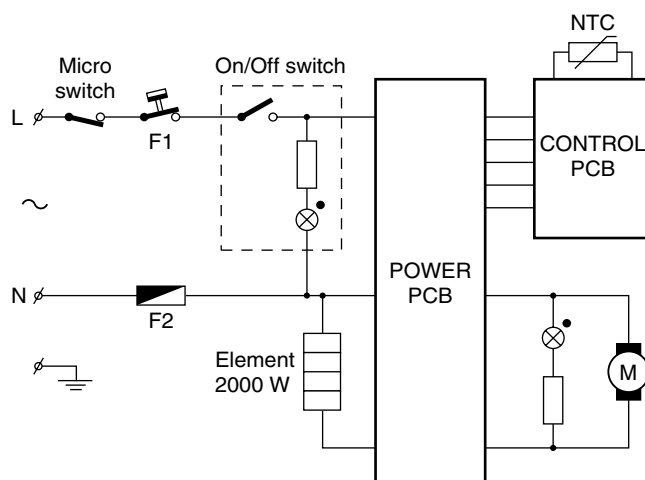
Service Manual

PRODUCT INFORMATION

- This product meets the requirements regarding interference suppression on radio and TV.
- After the product has been repaired, it should function properly and has to meet the safety requirements as officially laid down at this moment.

TECHNICAL INFORMATION

- Voltage : 220 - 240 V
- Frequency : 50 - 60 Hz
- Power consumption : 2000 W
- Contents Oil : 2500 cc
- Coloursetting : White / grey
- Electronic adjustable temperature control : 150 - 190 °C
- Resetable fuse F1 switch-off temp. : 185 °C
- Fuse F2 cut-off temp. : 184 °C
- SAP coding : HD6180



DISASSEMBLY- AND RE-ASSEMBLY ADVISE

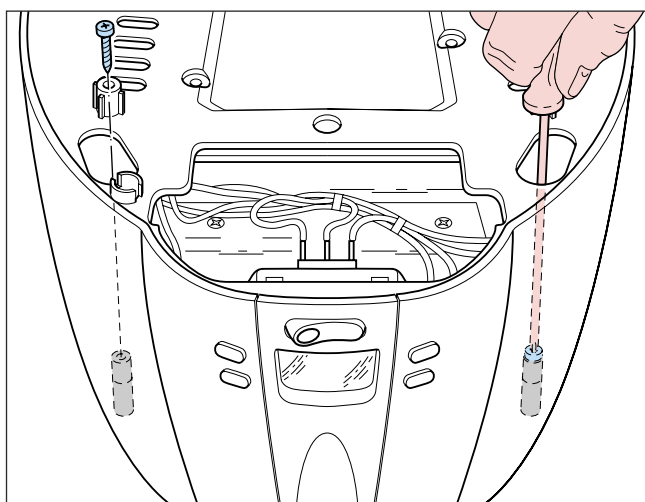
Base removal:

To remove the base first remove the two rubber feet (item 18) unscrew the four larger and the six smaller crosshead screws. Now the base can be removed!

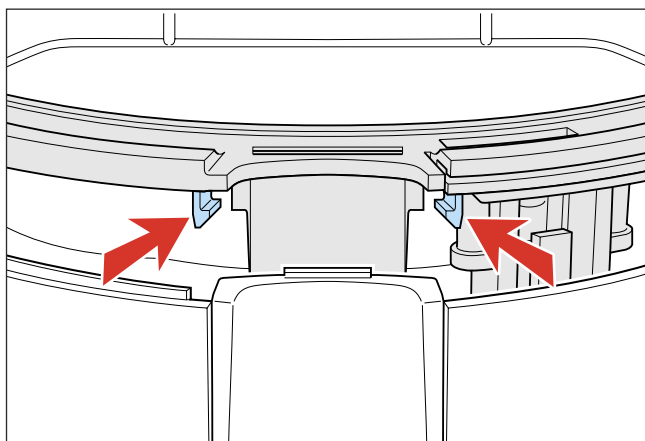
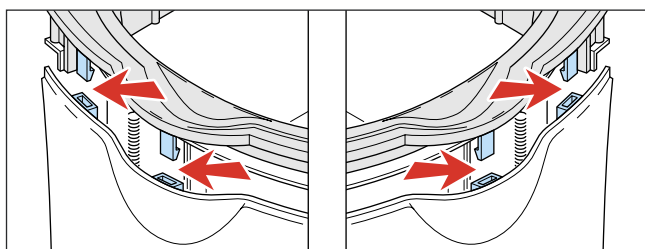
Housing removal:

To remove the housing please follow the steps below and be careful with the “hidden snap locks”.

1. Remove the 4 cross head screws at the rear site of the appliance (situated at the FAN outlet)
2. Remove the 2 cross head screws at the inner side of the appliance.
You'll need a crosshead screwdriver with a long shaft minimum 22 cm, for the location of the screws see picture.



3. If all the screws (step 1 and 2) are removed, next step is to find the hidden snap locks were the housing is connected to the upper Grey top ring.
In total there are 6 hidden snap locks, for the locations see pictures.



4. Remove/disconnect the white wires connected to the element, micro switch and mains contact block to make the way free for removing the housing.

If all the snap locks are reached and are unlocked, the housing can be lifted from the Grey top ring.

Now it will be possible to reach the inner parts.

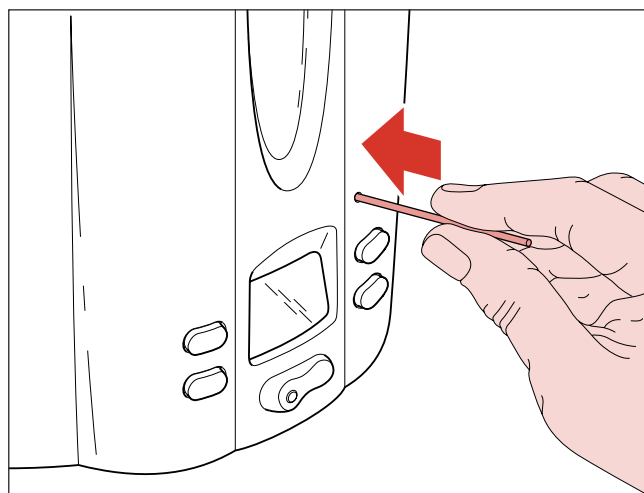
REPAIR INSTRUCTION

Electrical circuit

When the appliance does not work, check the electrical circuit.

Be aware of the micro switch that detects if the bowl is right placed!

Fuse F1 is Reset able, to reset the fuse place a pin (diameter $\varnothing < 2$ mm) through the hole and push gently until you feel a click, see picture.



The Thermostat is now reset.

OPTIONAL (accessories)

- No specific issues

PARTS LIST
HD6I80

Pos	Service code	Description	
1	9965 000 20583	Hinge Cover	grey
2	9965 000 20584	Hinge Shaft	
3	9965 000 20585	Hinge Moving	
4	9965 000 20586	Hinge Spring	
5	9965 000 20587	Stopper Shaft	
6	9965 000 20588	Lid Assy	
7	9965 000 20589	Stir Rubber	grey
8	9965 000 20590	Pivot Block	grey
9	9965 000 20591	Pivot Block Rubber	grey
10	9965 000 20592	Basket Assy	grey
11	9965 000 20593	Bowl W/ Coating	black
12	9965 000 20594	Cord Storage	grey
13	9965 000 20595	Rear Housing	grey
14	9965 000 20596	PCB Power	
15	9965 000 20597	Base Clipper	
16	9965 000 20598	Clipper Spring	
17	9965 000 20599	Base Ass'y	grey
18	9965 000 20600	Rubber Foot	
19	9965 000 20601	Fan	
20	9965 000 20602	Motor Assy	
21	9965 000 20603	Heat Sink Ass'y	
22	9965 000 20607	Condenser Tray Ass'y	blue transparency
23	9965 000 20608	Heat Sink Seal	
24	9965 000 20609	Heater	
25	9965 000 20610	Lid Release Button	grey
26	9965 000 20611	Spring Plate	
27	9965 000 20612	LCD Panel	grey
28	9965 000 20613	Switch Holder	
29	9965 000 20614	On/Off Switch	grey
30	9965 000 20615	PCB control	
31	9965 000 20616	Lid Button Right	Silver
32	9965 000 20617	Button Left	Silver
33	9965 000 20618	Thermostat Manual Reset, 185 °C	
34	9965 000 20619	Housing Thermostat	
35	9965 000 20620	NTC	
36	9965 000 20621	NTC Housing	
37	9965 000 20622	Fuse Assy	
38	9965 000 20623	Activator	
39	9965 000 20624	Micro Switch	

