



Philips Domestic Appliances and Personal Care

# Service Manual

## PRODUCT INFORMATION

### Features

- Colour pearl blue
- Careeza soleplate
- Tank capacity (300 ml)
- Steam rate (35 g/min)
- Shot of steam (85 g/min)
- Vertical steam
- Permanent Anti-Calc
- Soft touch hand grip
- Drip stop
- Anti slip
- Integrated cord winder
- Cord length : 2 m.

### Safety Information

- This product meets the requirements regarding interference suppression on radio and TV.
- After the product has been repaired, it should function properly and has to meet the safety requirements and legal regulations as officially laid down at this moment.

## TECHNICAL INFORMATION

Voltage	: 220 - 240 V
Frequency	: 50 - 60 Hz
Power consumption	: 1900 W

### Water advice

Suitable for tap water use. However if the tap water in your area is very hard, we advise you to mix it with a equal portion of distilled water or to use distilled water only.

### Cleaning of the Iron

Use only the Calc clean button for cleaning of the Iron. Never use vinegar, starch or chemically descaled water.

### Soleplate

Careeza is a multi layer chemical substance that gives an excellent gliding over various fabrics and better care for the garments.

### Vertical Steam

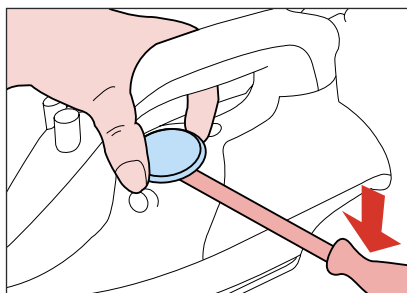
When the iron is kept in a vertical position, the shot of steam (S.O.S) button can be used to iron hanging fabrics such as curtains.

### Drip stop

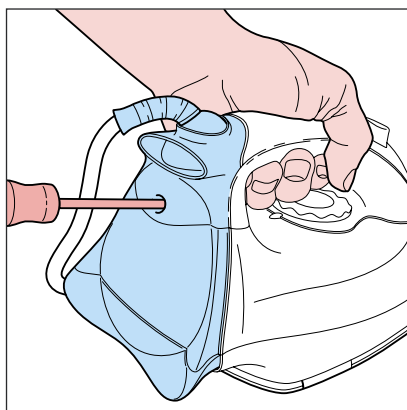
Water is only released to through the tank valve into the steam chamber if the soleplate temperature is high enough to evaporate all water. If the temperature is too low, the tank valve is closed by means of a bi-metal disc.

### Anti Slip heel rest

The rubberised part that is provided on the backplate prevent the iron from slipping off a smooth surface (like a table top) when left in a vertical position.

**DIAL 1****BACKPLATE 2****CORD SET 3****SWIVEL 4**

Remove Screw A (1x)



Remove BACKPLATE 2

Remove Screw B (2x) cord clamping

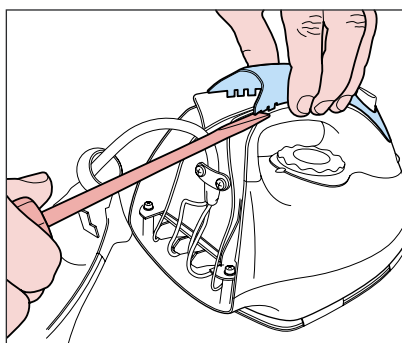
**INLAY 5****LAMP ASSY 6****FILLING DOOR 7****STEAM SLIDER 8****LAMP COVER 9****SOS KNOB 10****SPRAY KNOB 11****TANK SEAL 12**

remove Screw A (1x)

remove BACKPLATE 2

remove Screw B (2x) cord clamping

remove INLAY 5

**DOSING UNIT 13**

remove Screw A (1x)

remove BACKPLATE 2

remove Screw B (2x) cord clamping

remove INLAY 5

remove Screw C (2x)

remove Screw D (2x)

remove DOSING UNIT 13

**HANDLE 14****RATTLE SPRING 15****PUMP 16**

remove Screw A (1x)

remove BACKPLATE 2

remove Screw B (2x) cord clamping

remove INLAY 5

remove Screw C (2x)

remove Screw D (2x)

remove DOSING UNIT 13

remove Screw E (2x)

remove HANDLE 14

**TANK 17****VALVE BELLOW 18****THERMOSTAT BUSH 19**

remove Screw A (1x)

remove BACKPLATE 2

remove Screw B (2x) cord clamping

remove INLAY 5

remove Screw C (2x)

remove Screw D (2x)

remove DOSING UNIT 13

remove Screw E (2x)

remove HANDLE 14

remove Screw F (2x)

remove TANK 17

**SHIELD 20**

remove Screw A (1x)

remove BACKPLATE 2

remove Screw B (2x) cord clamping

remove INLAY 5

remove Screw C (2x)

remove Screw D (2x)

remove DOSING UNIT 13

remove Screw E (2x)

remove HANDLE 14

remove Screw F (2x)

remove TANK 17

remove Screw G (1x)

remove SHIELD 20

**COVER 21****SOS SEAL 22****DOSING SEAL 23****SOLEPLATE ASSY 24**

remove Screw A (1x)

remove BACKPLATE 2

remove Screw B (2x) cord clamping

remove INLAY 5

remove Screw C (2x)

remove Screw D (2x)

remove DOSING UNIT 13

remove Screw E (2x)

remove HANDLE 14

remove Screw F (2x)

remove TANK 17

remove Screw G (1x)

remove SHIELD 20

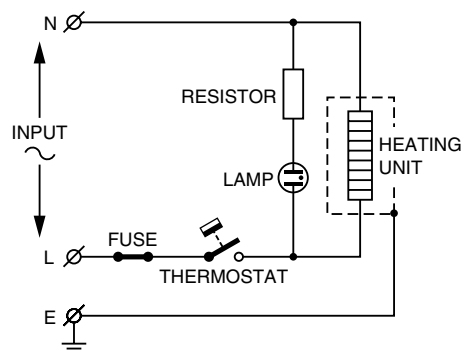
remove Screw H (2x)

remove COVER 21

Pos	Service code	Description
1	4239 022 53070	Dial
2	4239 022 53090	Backplate
3	4239 000 07970	Cordset (Europe)
	4322 000 08380	Cordset (UK)
4	4239 026 10120	Swivel
5	4239 021 10290	Inlay
6	4239 021 03140	Lamp assy
7	4239 021 10070	Filling door assy
8	4239 026 10170	Steam slider
9	4239 026 08280	Lamp cover
10	4239 026 10050	SOS knob
11	4239 026 10100	Spray knob
12	4239 015 54400	Tank seal
13	4239 021 11730	Dosing unit
14	4239 026 10440	Handle
15	4239 026 08840	Rattle spring
16	4239 020 90560	Pump
17	4239 022 53270	Tank Assy (Drip stop)
18	4239 020 85140	Valve bellow
19	4239 015 98410B	Thermostat bush
20	4239 010 07850	Heat shield
21	4239 026 10420	Cover (Drip Stop)
22	4239 015 51450	SOS seal
23	<b>4239 015 55430</b>	Dosing seal
24	4239 022 53150	Soleplate assy 230 V / 1800 W
	4239 022 53160	Soleplate MTD assy 120 V / 1300 W
25	4239 026 01220	Lamp holder

**Note:**

When replacing either Dosing seal (22) or Heat shield (19), both parts have to be replaced together.

**REPAIR INSTRUCTIONS**

- Due to high voltage of the iron, ONLY the specified cordsets must be used.
- For standardisation reasons :  
Type plate : No information about the typenumber and voltage have been stamped onto the typeplate.  
When replacing the typeplate, engrave at least typenumber onto the typeplate with a sharp object.
- Thermostat, fitted to the soleplate 24 has already been adjusted by the supplier and secured by glue. To avoid mal-function of the iron, NEVER re-adjust the thermostat.

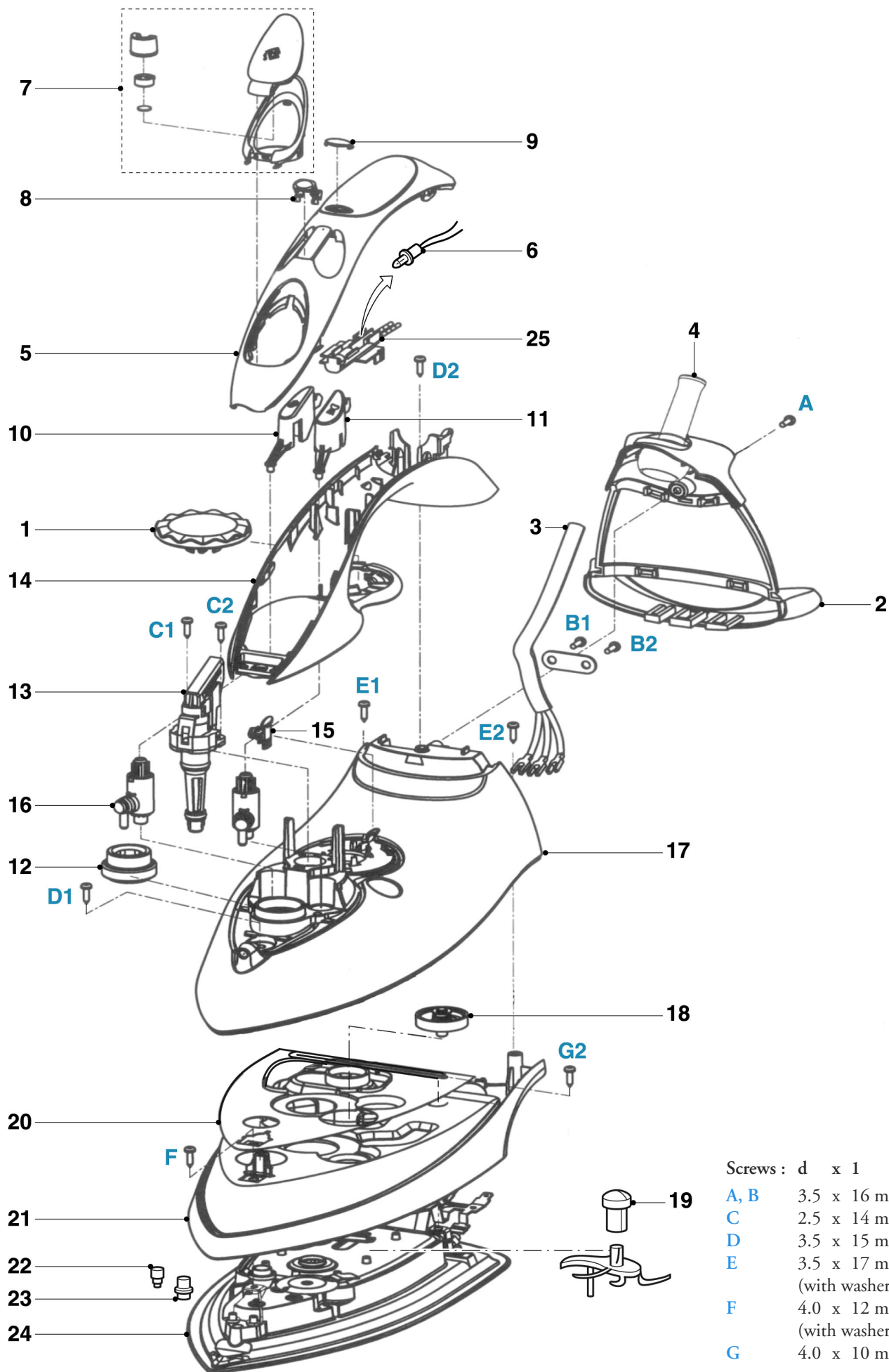
**NOTE :**

The thermostat can only be ordered together with the soleplate assembly 24.

**OPTIONAL (ACCESSORIES)**

- No specific issues

**■** = changed



Screws : d x l

A, B	3.5 x 16 mm
C	2.5 x 14 mm
D	3.5 x 15 mm
E	3.5 x 17 mm (with washer 1mm)
F	4.0 x 12 mm (with washer 1mm)
G	4.0 x 10 mm