

Service  
Service  
Service



Philips Domestic Appliances and Personal Care

# Service Manual

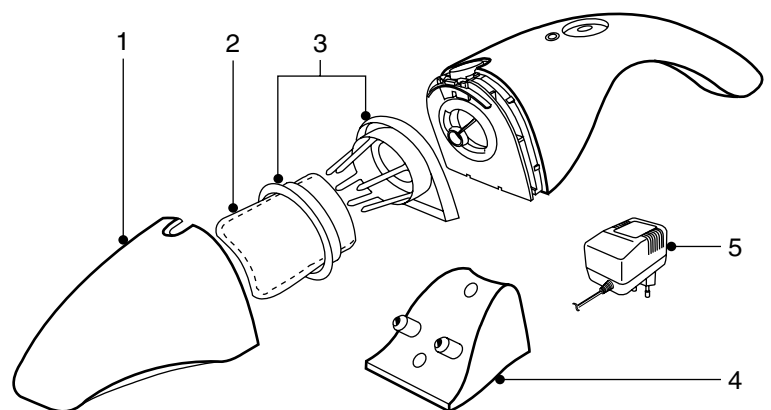
## PRODUCT INFORMATION

Rechargeable batteries	:	2 x 1.2V NiCd
Transformer AC / AC	:	220 / 4V AC
Charger indicator	:	Led red
Operation time (fully charged)	:	> 10 minutes
Dust capacity	:	0.4 L
Colour setting	:	Lime green
Weight	:	0.75 kg
Dimensions	:	12.5 x 10.0 x 38.5 cm
Cord length	:	1.8 m

## SERVICE INFORMATION

- The dust container and wall holder are all interchangeable for all versions, only with color difference.
- Washable permanent filter is available under type number HR6934
- The rechargeable batteries contained substances, which may pollute the environment. Dispose unused cells at especially assigned places.
- If a repair has been executed, ensure that all the functions of the appliance are working correctly.

1 Dust container	- lime green	9965 000 07836
2 Dust bag	- HR 6934	9965 000 03256
3 Filter holder assy		9965 000 03260
4 Wall holder	- orange	9965 000 07837
5 Adapter	- 220 V China	9965 000 07838



This product meets the requirements regarding interference suppression on radio and TV.

After the product has been repaired, it should function properly and has to meet the safety requirements as officially laid down at this moment.