



Philips Domestic Appliances and Personal Care

Service Manual

PRODUCT INFORMATION

- This product meets the requirements regarding interference suppression on radio and TV.
- After the product has been repaired, it should function properly and has to meet the safety requirements as officially laid down at this moment.

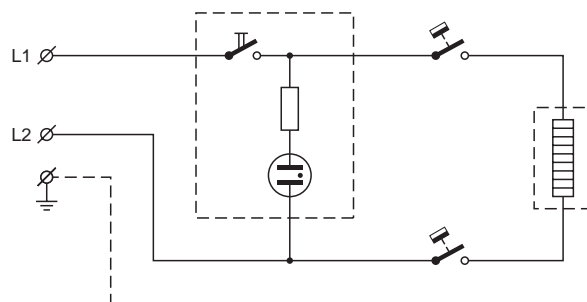
TECHNICAL INFORMATION

- Voltage : 220 - 240 V
- Frequency : 50 - 60 Hz
- Power consumption : 900 - 1100 W
- Contents jug : 960 cc
- Coloursetting : Black
- Filter size : 1 x 4
- Thermostat switch-off temp : 135 °C
- Fuse cut-off temp : 260 °C
- SAP Coding : HD7528/20

DISASSEMBLY- AND RE-ASSEMBLY ADVISE

Base removal

Besides three screws, three plastic snap connections have to be detached by means of using a simple screwdriver, as indicated on the base of the appliance.



REPAIR INSTRUCTION

1. Electrical circuit

When the appliance does not work, check the electrical circuit. If the thermal fuse or thermostat prove defective, the complete pump unit has to be replaced.

2. De-scaling

If the water system is nearly or less clogged by scale then operate the coffeemaker a few times with vinegar or with a 10-15% solution of either vinegar-acid, citric acid or tartar-acid, into cold tap water.

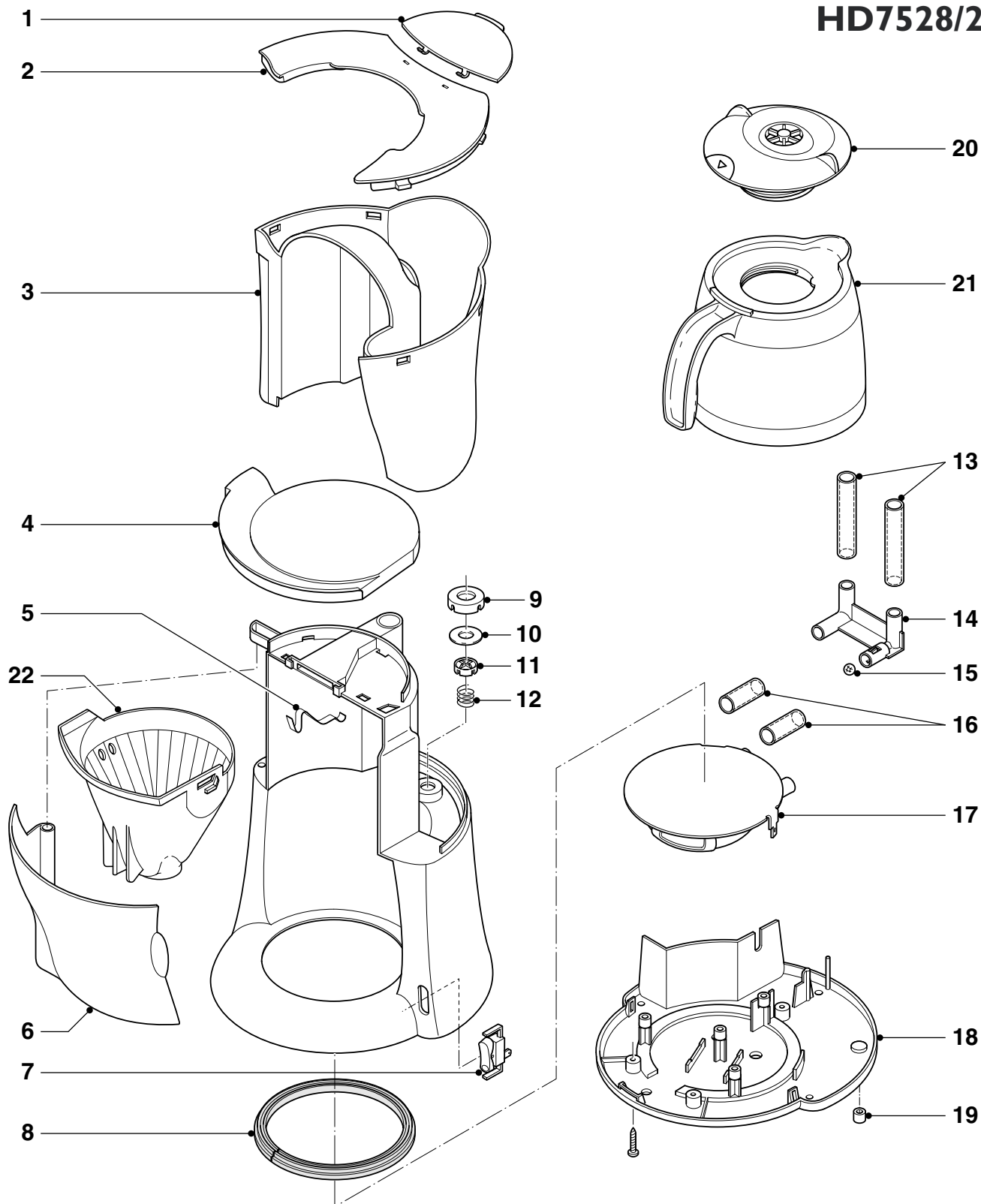
Do not use other de-scaling agents as these may harm the appliance.

If this procedure does not restore the function, then switch off the coffeemaker when the acid has passed through during appr. 3 min. Keep the appliance in this condition overnight and continue/repeat the cleaning operation.

After the de-scaling procedure, operate the coffeemaker twice with tap water in order to rinse away any residual substances.

OPTIONAL (accessories)

- Commercial trade number Thermos Jug : HD7968 (Black)



Pos	Description	Service code
1	Tank lid	9965 000 15552
2	Tank Cover, black	9965 000 15553
3	Water tank	9965 000 15554
4	Cover	9965 000 15555
5	Spring Filter hold bracket	9965 000 15556
6	Filter cap, black	9965 000 15557
7	Switch, black	9965 000 15558
8	Seal heatingplate	9965 000 15559
9	Seal cover	9965 000 09505
10	Locking ring	9965 000 15560
11	Lockingplate	9965 000 09506

Pos	Description	Service code
12	Spring valve	9965 000 09507
13	Hose piece 8 x 2	9965 000 16705
14	Connecting piece	9965 000 15561
15	Ball	9965 000 15562
16	Hose piece 9.8 x 2,7	9965 000 15563
17	Pump assy	9965 000 15564
18	Base assy	9965 000 15565
19	Foot	9965 000 15566
20	Thermos Juglid Black	9965 000 15567
21	Thermos Jug	9965 000 15568
22	Filter without Cap	9965 000 16700