



**PRINTER OPTION**

**DU-30**

# **PARTS CATALOGUE**

# DU-30 Parts Catalogue

## Table of Contents

DU-30 Duplex Unit (Fig.30).....3

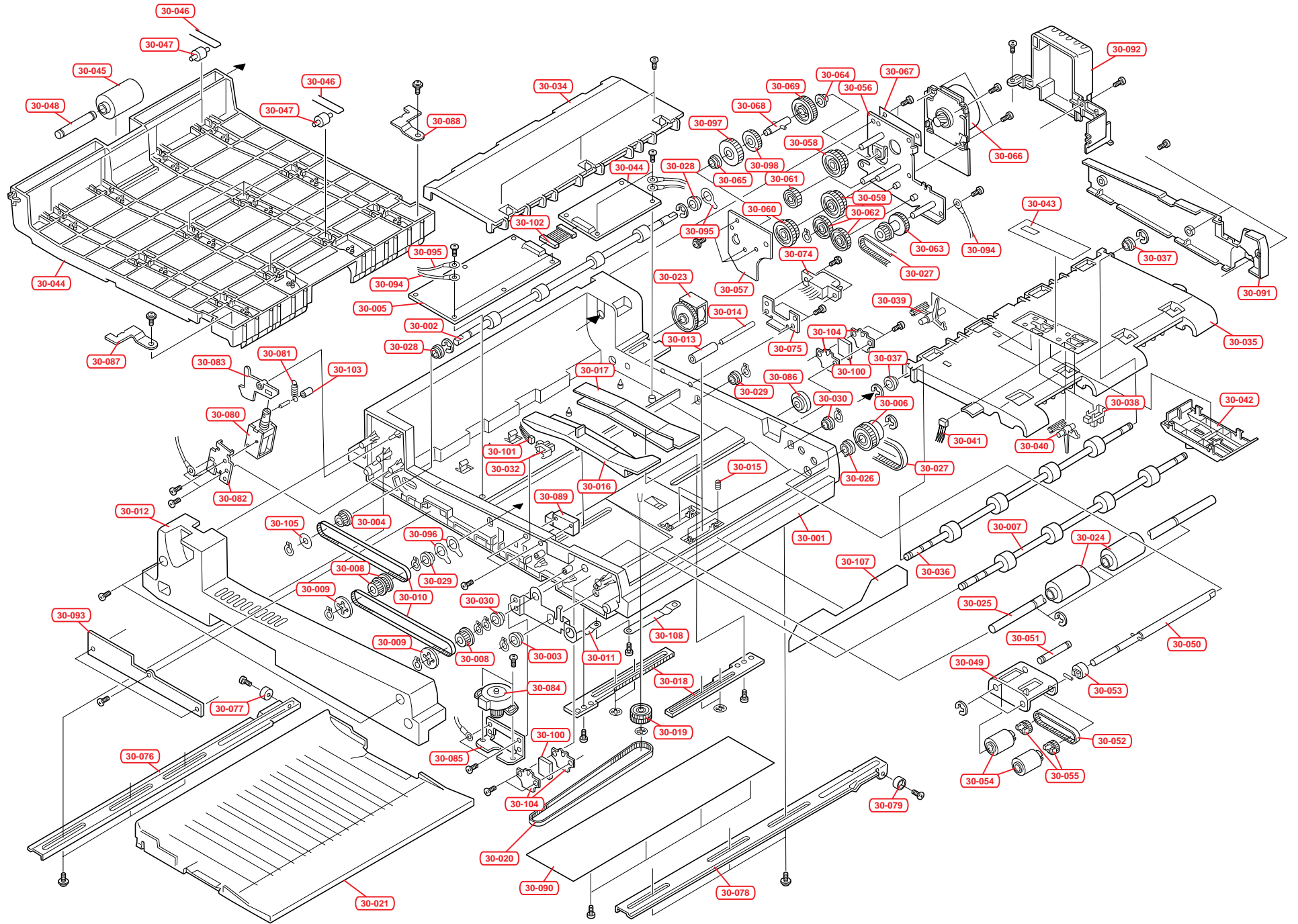
## Introduction

The figures which follow depict the major assemblies of the printer or option, broken down into components. Following each figure are the list giving the following information:

- 'Ref No.' .....Reference number which corresponds to the parts in the figure
- 'Part code'.....Part code which identifies the part
- 'Part description' .....A brief description of the part
- 'Quantity'.....Quantity of the part used in the printer or option

Only the parts highlighted in BOLD should be ordered. All other parts are for reference only and are not stocked.

Fig. 30 - DU-30 Duplex Unit



Ref No.	Part Code	Description	Quantity
<b>30-000</b>	<b>DU-30</b>	<b>Duplex Unit</b>	<b>1</b>
30-001	5MVB886SB008	Frame Main DU	1
30-002	5MMT866SN026	Shaft L	1
30-003	5MMM121CX001	Bush Drum	1
30-004	5MVG1216DN012	Pulley P18	1
<b>30-005</b>	<b>5AAPRCZR2005AH</b>	<b>PWB Assy</b>	<b>1</b>
<b>30-006</b>	<b>5AAVCLTCH009</b>	<b>Clutch Assy</b>	<b>1</b>
30-007	5MMT876SN053	Shaft M	1
30-008	5MVG337DN004	Pulley P24	1
30-009	5MVF182DN001	Cover Pulley	1
<b>30-010</b>	<b>5MVM190RB020</b>	<b>Belt S2M328</b>	<b>1</b>
30-011	5MMS852LD001	Plate Earth A	1
30-012	5MVB865SB040	Cover Front DU	1
30-013	5MVM460DB001	Roller Idle	1
30-014	5MMT555SN001	Shaft B	1
30-015	5MMW155LD001	Spring Bottom	1
30-016	5MVB843SB002	Guide Paper R	1
30-017	5MVB843SB003	Guide Paper L	1
30-018	5MVB822DW001	Rack DU	1
30-019	5MVG147DN010	Gear Z25-P36	1
<b>30-020</b>	<b>5MVM190RB024</b>	<b>Belt S2M426</b>	<b>1</b>
30-021	5MVB883SB014	Frame Bottom DU	1
<b>30-023</b>	<b>5EYYAFAAM01**02</b>	<b>Spring Clutch</b>	<b>1</b>
30-024	5MVM687DB001	Roller Guide	1
30-025	5MMT866SN024	Shaft S	1
30-026	5MMM176CJ003	Metal Bush KD	1
30-027	5MVM190RB021	Belt S2M 630	1
30-028	5MMM121CX001	Bush Drum	1
30-029	5MMM121CX001	Bush Drum	1
30-030	5MMM121CX001	Bush Drum	1
30-032	5ENXGP1A73A**01	Photo Sencor	1
30-034	5MVB873SB048	Plate Paper	1
30-035	5MVB873CC001	Plate Bottom	1
30-036	5MMT876SN053	Shaft M	1
30-037	5MMM121CX001	Bush Drum	1
<b>30-038</b>	<b>5ENXGP1A73A**01</b>	<b>PT. Sencor</b>	<b>1</b>
<b>30-039</b>	<b>5MVX433DB004</b>	<b>Actuator H</b>	<b>1</b>
<b>30-040</b>	<b>5MVX433DB003</b>	<b>Actuator S</b>	<b>1</b>
<b>30-041</b>	<b>5AACCNQF1GEA</b>	<b>Conn. Cord Assy S02099</b>	<b>1</b>
30-042	5MVB753SB020	Cover PB	1
30-043	5MVS522KC003	Sheet BU	1
30-044	5MVB882CC001	Plate Top	1
30-045	5MVM687DB001	Roller Guide	1
<b>30-046</b>	<b>5MMW521LX001</b>	<b>Spring PA</b>	<b>1</b>
<b>30-047</b>	<b>5MVM374DN001</b>	<b>Pulley PA</b>	<b>1</b>

Ref No.	Part Code	Description	Quantity
30-048	5MMT666SN002	Shaft P	1
30-049	5MVB662DW001	Guide Turn	1
30-050	5MMT866SN025	Shaft PI	1
30-051	5MMT666SN001	Shaft PU	1
<b>30-052</b>	<b>5MVM190RB019</b>	<b>Belt S2M 124</b>	<b>1</b>
<b>30-053</b>	<b>5AAROLL*034</b>	<b>Torque Limiter</b>	<b>1</b>
30-054	5AAVROLL*036	Roller DU Assy	1
<b>30-055</b>	<b>5AYDU30**09</b>	<b>Roller Return Assy</b>	<b>1</b>
30-056	5MMX776SD003	Plate Drive A	1
30-057	5MMS766SD005	Plate Drive B	1
30-058	5MVG158DN024	Gear H50-Z36	1
30-059	5MVG148DN024	Gear Z36-Z29	1
30-060	5MVG148DN025	Gear Z36-Z24	1
30-061	5MVG137DN020	Gear Z24	1
30-062	5MVG138DN034	Gear Z30	1
30-063	5MVG137DN021	Gear Z30-P30	1
30-064	5MMM121CX001	Bush Drum	1
30-065	5MMM176CJ005	Bushing SBK	1
<b>30-066</b>	<b>5AAXMT031GEA</b>	<b>Main Motor Assy</b>	<b>1</b>
30-067	5MVS622SC001	Sheet MO	1
30-068	5MMT466SN001	Sheet D	1
30-069	5MVG147DN011	Gear Z36	1
30-070	5MVG148DN026	Gear Clutch Z36	1
30-071	5AAVCLTCH010	Oneway Clutch	1
30-072	5MVG137DN019	Gear Clutch Z24	1
30-073	5AAVCLTCH010	Oneway Clutch	1
30-074	5AACCNQE6GEA	Conn Cord Assy S2094	1
30-075	5MMS527SD002	BKT Connector	1
30-076	5MMU932SD001	Rail Case L	1
30-077	5MMM165SN002	Roller DU	1
30-078	5MMU932SD002	Rail Case R	1
30-079	5MMM165SN002	Roller DU	1
<b>30-080</b>	<b>5EZSA2401020308</b>	<b>Solenoid</b>	<b>1</b>
30-081	5MMW261LD028	Spring Sol	1
<b>30-082</b>	<b>5MMS447SD001</b>	<b>BKT Solenoid</b>	<b>1</b>
30-083	5MVX443SG001	Arm DU	1
<b>30-084</b>	<b>5AAXMT027GEA</b>	<b>Stepping Motor Assy</b>	<b>1</b>
30-085	5MML373SD006	BKT Step	1
30-086	5MVM176DB014	Pulley Belt PU	1
30-087	5MML211SN002	Plate Catch L	1
30-088	5MML211SN001	Plate Catch R	1
30-089	5MVX622SB012	Cover PT	1
30-090	5MVB861SB007	Cover Bottom	1
30-091	5MVB864SB013	Cover Rear DU A	1
30-092	5MVB766SB003	Cover Rear DU B	1

Ref No.	Part Code	Description	Quantity
30-093	5MVS735CC004	Sheet DU	1
30-094	5AACCNQJ8GEA	Conn Cord Assy	1
30-095	5AACCNQJ9GEA	Conn Cord Assy	1
30-096	5AACCNQK0GEA	Conn Cord Assy	1
30-097	5AAVGEAR*029	Gear Clutch Z36 ASSY	1
30-098	5AAVGEAR*030	Gear Clutch Z24 ASSY	1
30-100	5MMK224FJ001	Magnet	1
<b>30-101</b>	<b>5AACCNQF2GEA</b>	<b>Conn Cord Assy S02100</b>	<b>1</b>
<b>30-102</b>	<b>5AACCNQE3GEA</b>	<b>Conn Cord Assy S02100</b>	<b>1</b>
30-103	5MVM150RB008	Rubber Pin	1
30-104	5MMS426SN003	Plate Magnet	1
30-105	5MVS766KN001	Sheet PU	1
30-106	5MML232LD002	Plate Earth Manual	1
30-107	5MVS854CB001	Sheet Turn	1
30-108	5MMS612LD003	Plate Earth DU	1
30-109		Ser. No. Plate	1
30-110		Label Front DU	1
30-111	5AAXAP026GEA	Mo PWB Assy	1