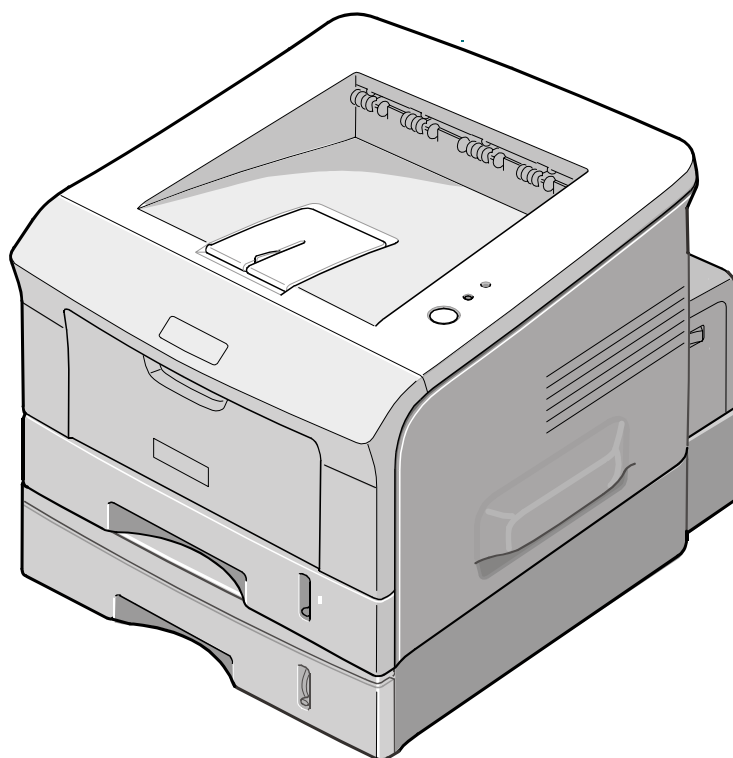




# RICOH UNIVERSITY

Learning ♦ Knowledge ♦ Performance



## G144/G145 PARTS CATALOG

002541MIU

*Gestetner* **LANIER** **RICOH** **SAVIN**





# G144/G145 PASRTS CATALOG

*Gestetner*<sup>®</sup>  
**LANIER**  
**RICOH**<sup>®</sup>  
**SAVIN**<sup>®</sup>





**RICOH UNIVERSITY**  
Learning ♦ Knowledge ♦ Performance

# **G144/G145 PARTS CATALOG**

002541MIU

*Gestetner* **LANIER** **RICOH** **SAVIN**



It is the reader's responsibility when discussing the information contained within this document to maintain a level of confidentiality that is in the best interest of Ricoh Corporation and its member companies.

***NO PART OF THIS DOCUMENT MAY BE REPRODUCED IN ANY FASHION AND DISTRIBUTED WITHOUT THE PRIOR PERMISSION OF RICOH CORPORATION.***

All product names, domain names or product illustrations, including desktop images, used in this document are trademarks, registered trademarks or the property of their respective companies.

They are used throughout this book in an informational or editorial fashion only and for the benefit of such companies. No such use, or the use of any trade name, or web site is intended to convey endorsement or other affiliation with Ricoh products.





## **WARNING**

*The Service Manual contains information regarding service techniques, procedures, processes and spare parts of office equipment distributed by Ricoh Corporation. Users of this manual should be either service trained or certified by successfully completing a Ricoh Technical Training Program.*

*Untrained and uncertified users utilizing information contained in this service manual to repair or modify Ricoh equipment risk personal injury, damage to property or loss of warranty protection.*

*Ricoh Corporation*



# LEGEND

PRODUCT CODE	COMPANY			
	GESTETNER	LANIER	RICOH	SAVIN
G144	-----	-----	BP20	-----
G145	-----	-----	BP20N	-----
G844	Paper Feed Unit Type 20			

# DOCUMENTATION HISTORY

REV. NO.	DATE	COMMENTS
*	10/2005	Original Printing



# **G144/G145**

## **TABLE OF CONTENTS**

<b>G144/G145 PARTS LOCATION AND LIST .....</b>	<b>1</b>
1. MAIN ASSEMBLY .....	2
1.1. PARTS LIST .....	3
2. FRAME ASSEMBLY .....	4
2.1. PARTS LIST .....	5
3. MP ASSEMBLY .....	6
3.1 PARTS LIST .....	7
4. FUSING UNIT ASSEMBLY .....	8
4.1 PARTS LIST .....	9
5. DRIVE UNIT ASSEMBLY .....	10
5.1 PARTS LIST .....	11
6. CASSETTE UNIT ASSEMBLY .....	12
6.1 PARTS LIST .....	13
 <b>G144/G145 PARTS INDEX .....</b>	 <b>1</b>
 <b>G844 PARTS LOCATION AND LIST .....</b>	 <b>1</b>
1. OPTIONAL PAPER FEED UNIT ASSEMBLY .....	2
1.1. PARTS LIST .....	3
 <b>G844 PARTS INDEX .....</b>	 <b>1</b>



# **G144/G145**

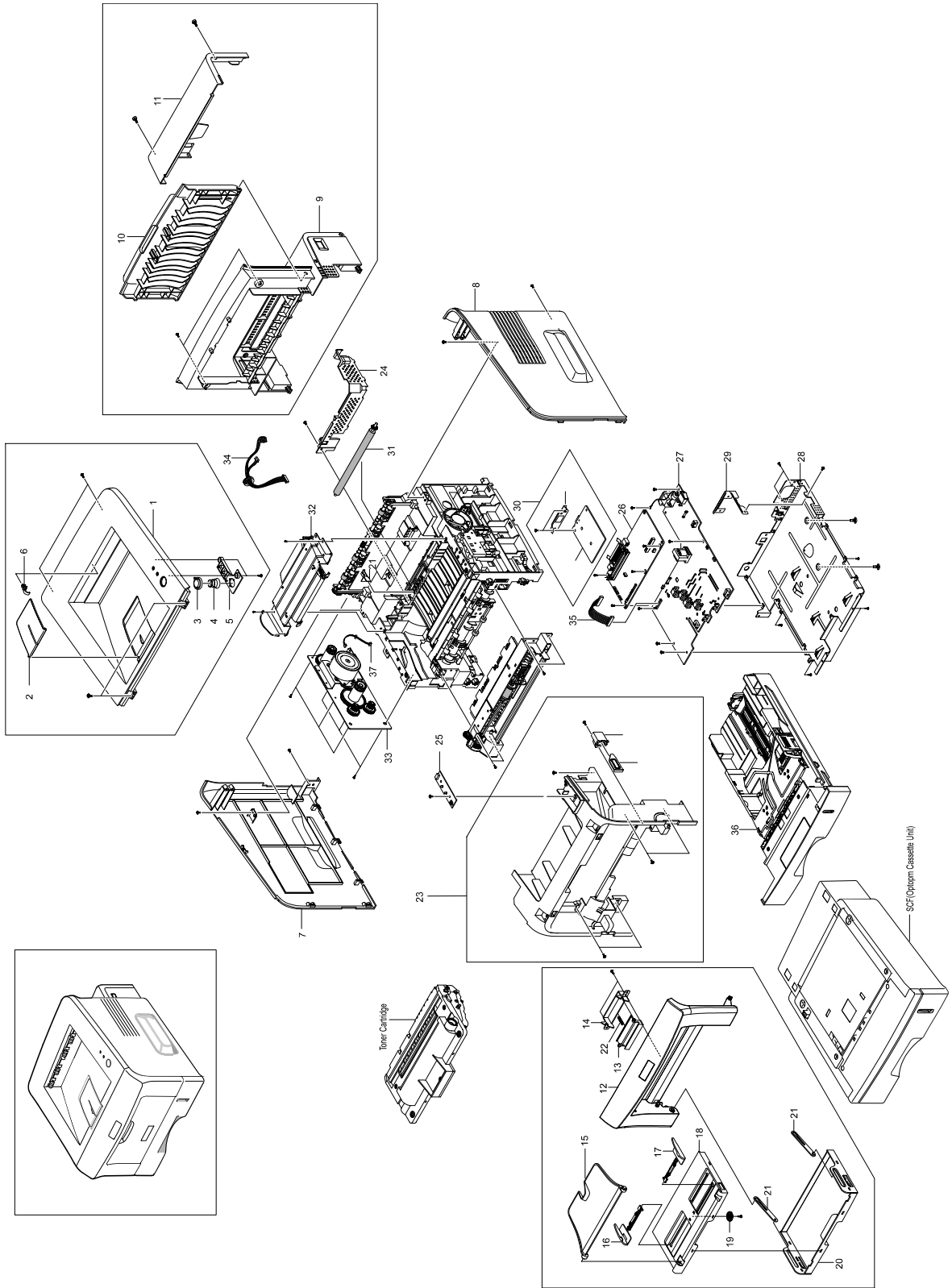
## **PARTS LOCATION AND LIST**





This section instructs you as to the numbers and names of parts on this machine.

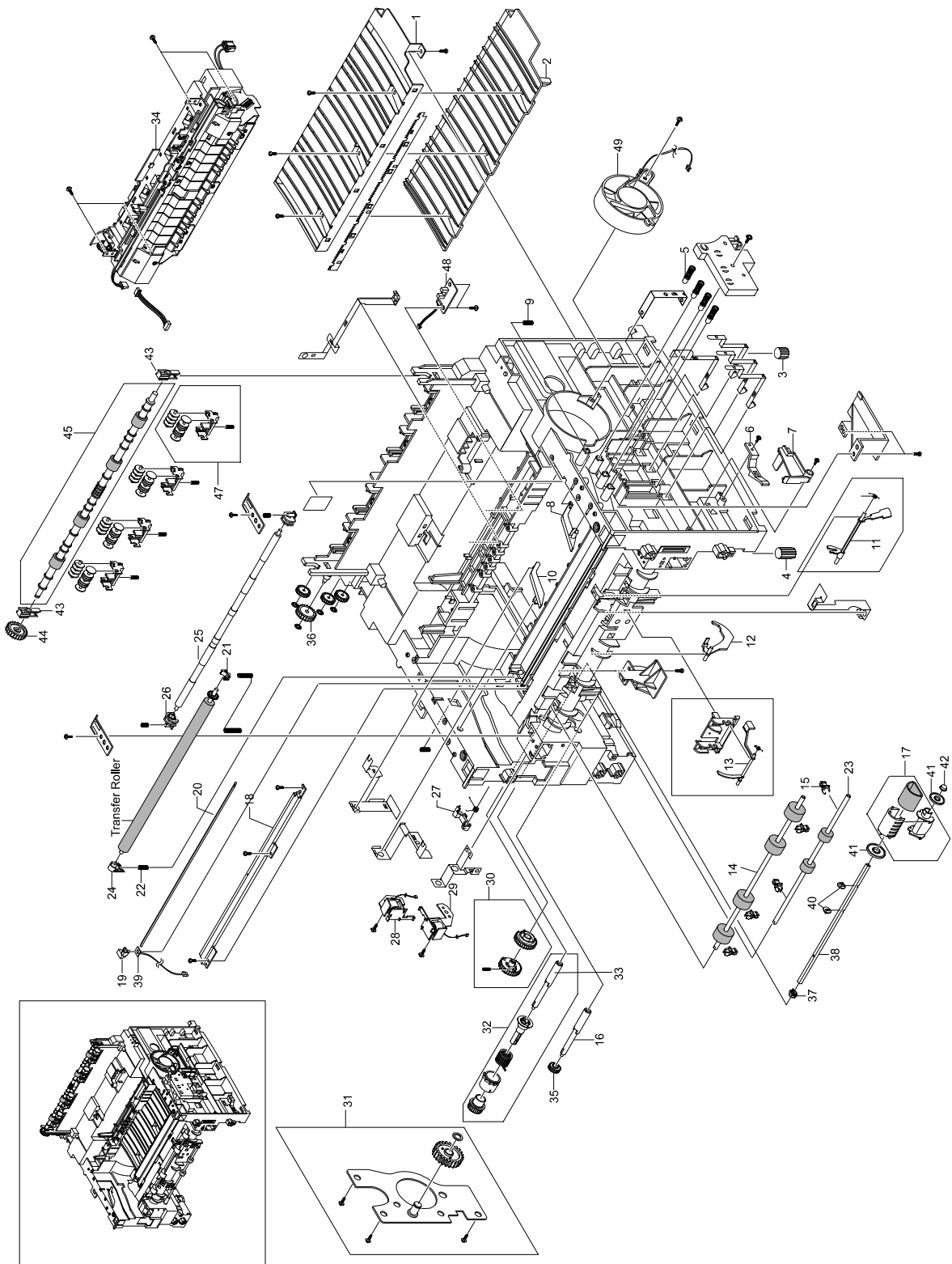
# 1. MAIN ASSEMBLY



## 1.1 PARTS LIST

Index No.	Part No.	Description	Q'ty
1	G1449500	TOP COVER	1
2	G1449501	EXTENSION - PAPER STACK	1
3	G1449502	OP - BUTTON	1
4	G1449503	OP- SPRING	1
5	G1449504	OP – LED	1
6	G1449505	BUSHING -PAPER EXIT	1
7	G1449506	LEFT COVER	1
8	G1449507	RIGHT COVER	1
9	G1449508	REAR COVER	1
10	G1449509	FACE UP DOOR – REAR	1
11	G1449511	REAR OPEN COVER	1
12	G1449512	FRONT COVER	1
13	G1449513	KNOB - FRONT COVER	1
14	G1449514	KNOB HOLDER - FRONT COVER	1
15	G1449515	EXTENSION - BYPASS TRAY	1
16	G1449516	ADJUSTMENT - DOCUMENT FEEDER L	1
17	G1449517	ADJUSTMENT - DOCUMENT FEEDER R	1
18	G1449518	DOCUMENT FEEDER TRAY	1
19	G1449519	GEAR - DOCUMENT FEEDER	1
20	G1449520	CASE - DOCUMENT FEEDER TRAY	1
21	G1449521	TRAY LINE - BYPASS	2
22	G1449522	SPRING – KNOB	1
23	G1449523	FRONT FRAME	1
24	G1449524	REAR COVER – PSU	1
25	G1449525	OP – BOARD	1
26	G1449526	MAIN BOARD	1
27	G1449527	PSU - 200V	1
27	G1449528	PSU - 100V	1
28	G1449529	SHIELD PLATE - MAIN BOARD	1
29	G1449530	NCU BRACKET	1
30	G1449606	NCU	1
31	G1449531	TRANSFER ROLLER	1
32	G1449532	LASER UNIT	1
33	G1449533	RX DRIVE ASS'Y	1
34	G1449534	HARNESS – LSU	1
35	H9149514	HARNESS - MAIN BOARD	1
36	G1449535	CASSETTE ASS'Y	1
37	G1449536	HARNESS - RX DRIVE	1

## 2. FRAME ASSEMBLY



## 2.1 PARTS LIST

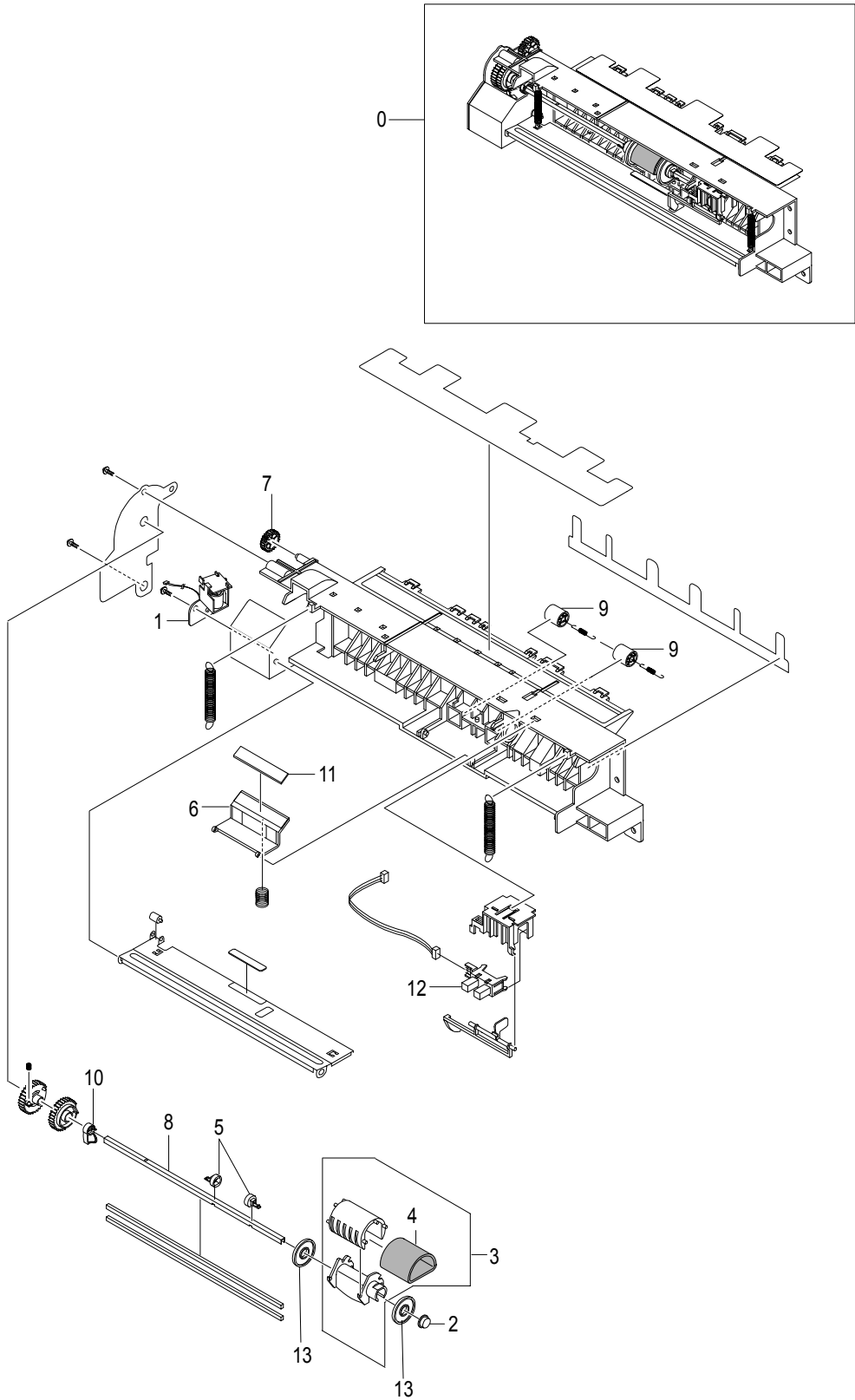
Index No.	Part No.	Description	Q'ty
1	G1449537	TRANSFER GUIDE UPPER	1
2	G1449538	TRANSFER GUIDE LOWER	1
3	G1449539	RUBBER FOOT BACK	1
4	G1449540	RUBBER FOOT FRONT	1
5	G1449541	MEC TERMINAL	1
6	G1449542	CASSETTE COCKER	1
7	B1739621	ACTUATOR - COVER OPEN	1
8	G1449543	PLATE GUIDE RIGHT	1
9	G1449544	SPRING – GUIDE	1
10	G1449545	PLATE GUIDE LEFT	1
11	G1449546	ACTUATOR – FEED	1
12	B1739626	ACTUATOR - PAPER END	1
13	G1449547	ACTUATOR – MANUAL	1
14	G1449548	FEED ROLLER	1
15	G1449549	BUSHING - FEED ROLLER	5
16	G1449550	FEED SHAFT	1
17	G1449551	PAPER PICK - UP ASS'Y	1
18	G1449552	EARTH - TRANSFER ROLLER	1
19	G1449553	HOLDER – QUENCHING	1
20	B1739636	LENS – QUENCHING	1
21	B1739639	BUSHING - TRANSFER : R	1
22	G1449554	SPRING - TRANSFER ROLLER	1
23	B1739638	FEED ROLLER	1
24	G1449555	BUSHING - TRANSFER ROLLER	1
25	B1739641	IDLE SHAFT – FEED	1
26	G1449556	BUSHING - IDLE SHAFT	1
27	G1449557	CAM – PICKUP	1
28	G1449558	SOLENOID - PICK UP	1
29	B1739647	SOLENOID – BYPASS	1
30	G1449559	PICK - UP GEAR ASS'Y	1
31	G1449560	BRACKET – FEED	1
32	B1739651	FEED CLUTCH ASS'Y	1
33	G1449550	FEED SHAFT	1
34	G1449565	FUSING UNIT 110 V	1
34	G1449566	FUSING UNIT 220V	1
35	G1449567	FEED SHAFT GEAR	1
36	G1449568	IDEAL GEAR MA ASS'Y	1
37	G1449569	BUSHING – PICKUP	1
38	G1449570	SHAFT PICK-UP ROLLER	1
39	G1449571	PCB – QUENCHING	1
40	G1449572	STOPPER PICK - UP ROLLER	2



## PARTS LIST

41	G1449573	IDLE – PICKUP	1
42	G1449574	BUSHING - MP ASS'Y	1
43	B1739611	BEARING – EXIT	2
44	G1449575	GEAR - EXIT ROLLER	1
45	G1449576	EXIT ROLLER	1
46	G1449577	RUBBER – EXIT	1
47	G1449578	RACK - EXIT ROLLER	1
48	G1449579	EXIT SENSOR	1
49	G1449580	COOLING FAN	1

3. MP ASSEMBLY

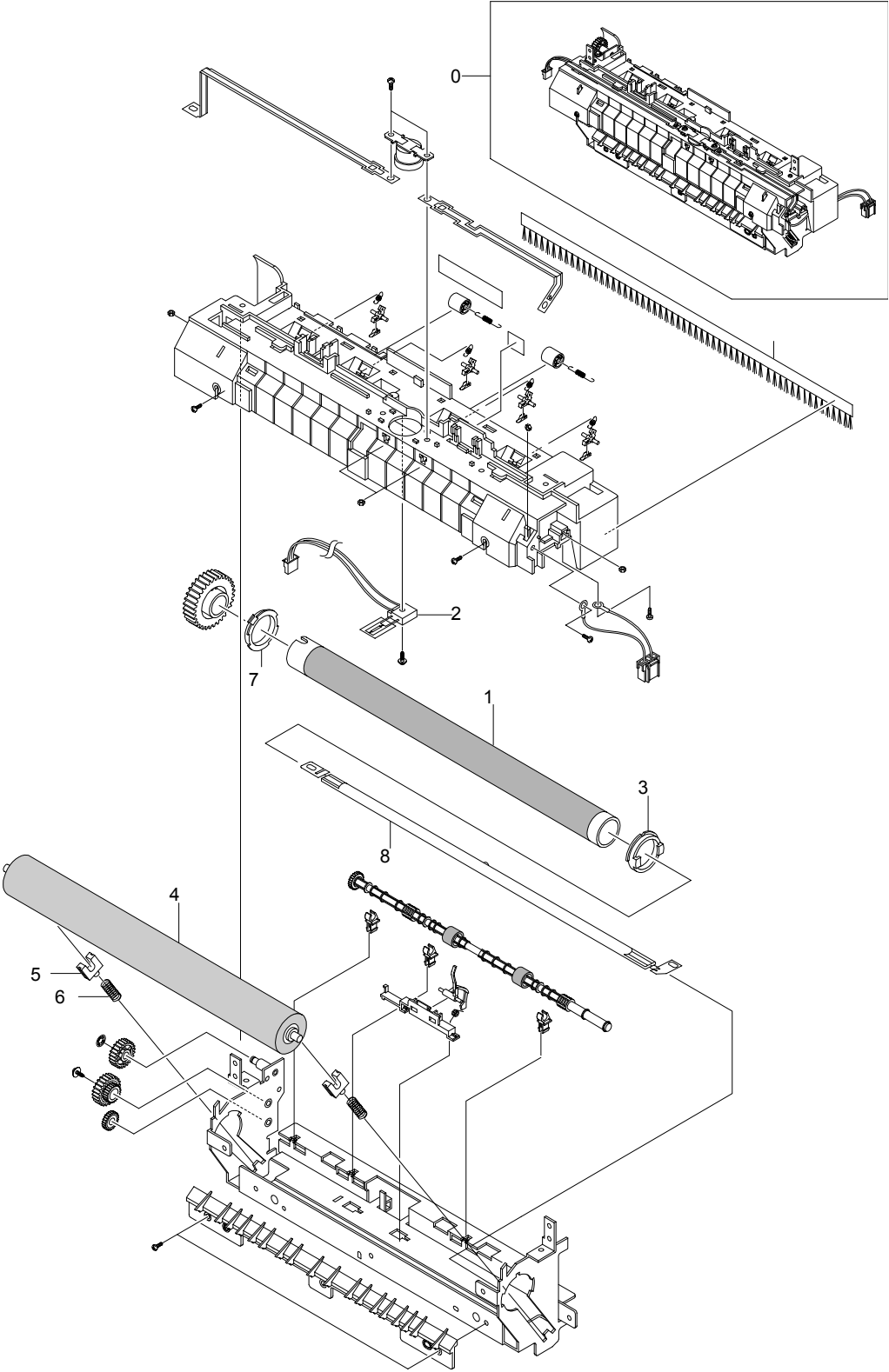




### 3.1 PARTS LIST

Index No.	Part No.	Description	Q'ty
0	G1449581	MP ASS'Y	1
1	G1449582	SOLENOID - MP ASS'Y	1
2	G1449574	BUSHING - MP ASS'Y	1
3	G1449551	PAPER PICK - UP ASS'Y	1
4	B1739631	SPONGE ROLLER - PICK-UP	1
5	G1449572	STOPPER PICK - UP ROLLER	2
6	G1449583	FRICTION PAD HOLDER	1
7	G1449568	IDLE GEAR MA ASS'Y	1
8	G1449570	SHAFT PICK-UP ROLLER	1
9	G1449584	IDLE FEED ROLLER	2
10	G1449585	PICK-UP ROLLER CAM	1
11	G1449586	FRICTION PAD	1
12	B1739602	PLATEN COVER SENSOR	1
13	G1449573	IDLE - PICKUP	1

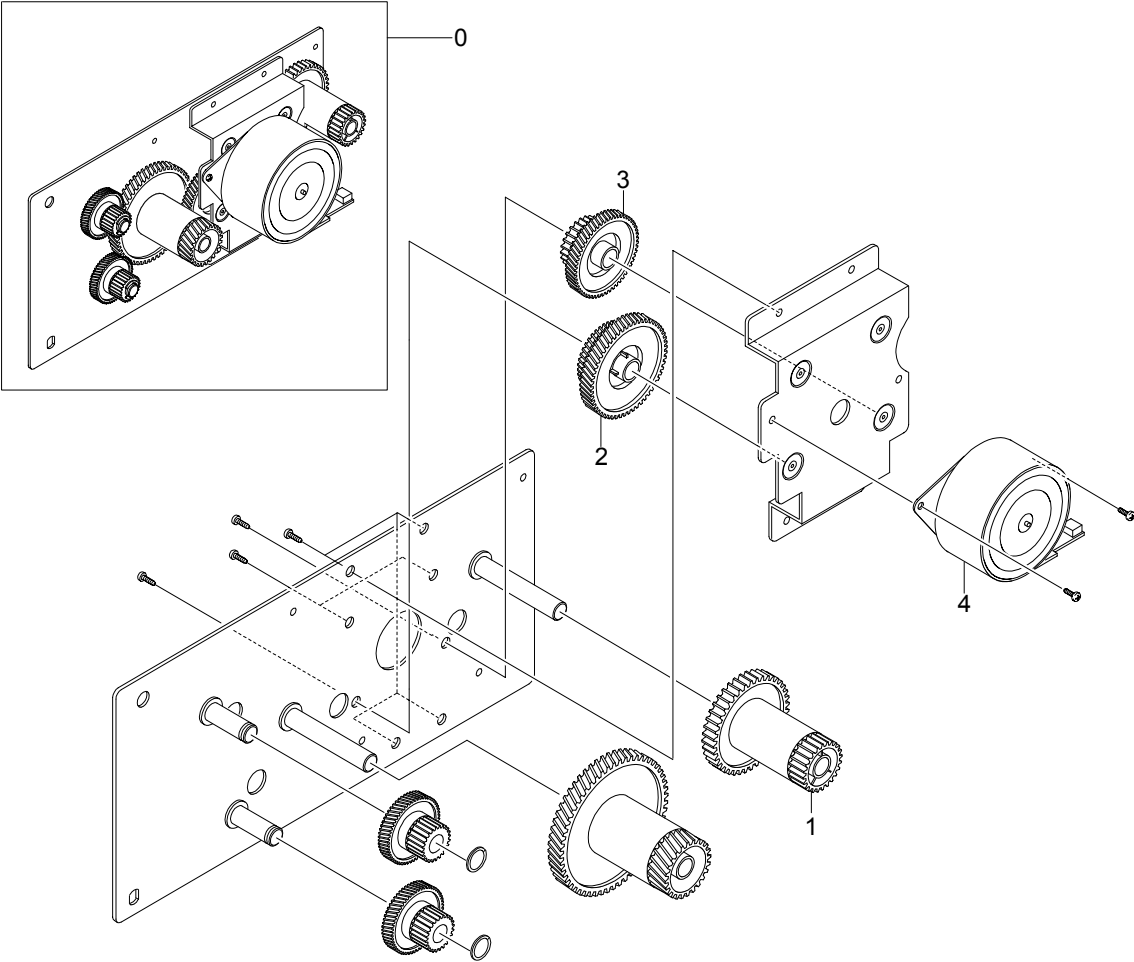
# 4. FUSING UNIT ASSEMBLY



## 4.1 PARTS LIST

Index No.	Part No.	Description	Q'ty
0	G1449565	FUSING UNIT 120 V	1
0	G1449566	FUSING UNIT 220V	1
1	G1449587	HOT ROLLER	1
2	G1449588	THERMISTOR	1
3	G1449589	BUSHING HEAT ROLLER	1
4	G1449590	PRESSER ROLLER	1
5	G1449591	BEARING PRESSER ROLLER	1
6	G1449592	SPRING – BEARING	1
7	G1449593	HOT ROLLER BUSHING	1
8	G1449594	FUSING LAMP 110 V	1
8	G1449595	FUSING LAMP 220V	1

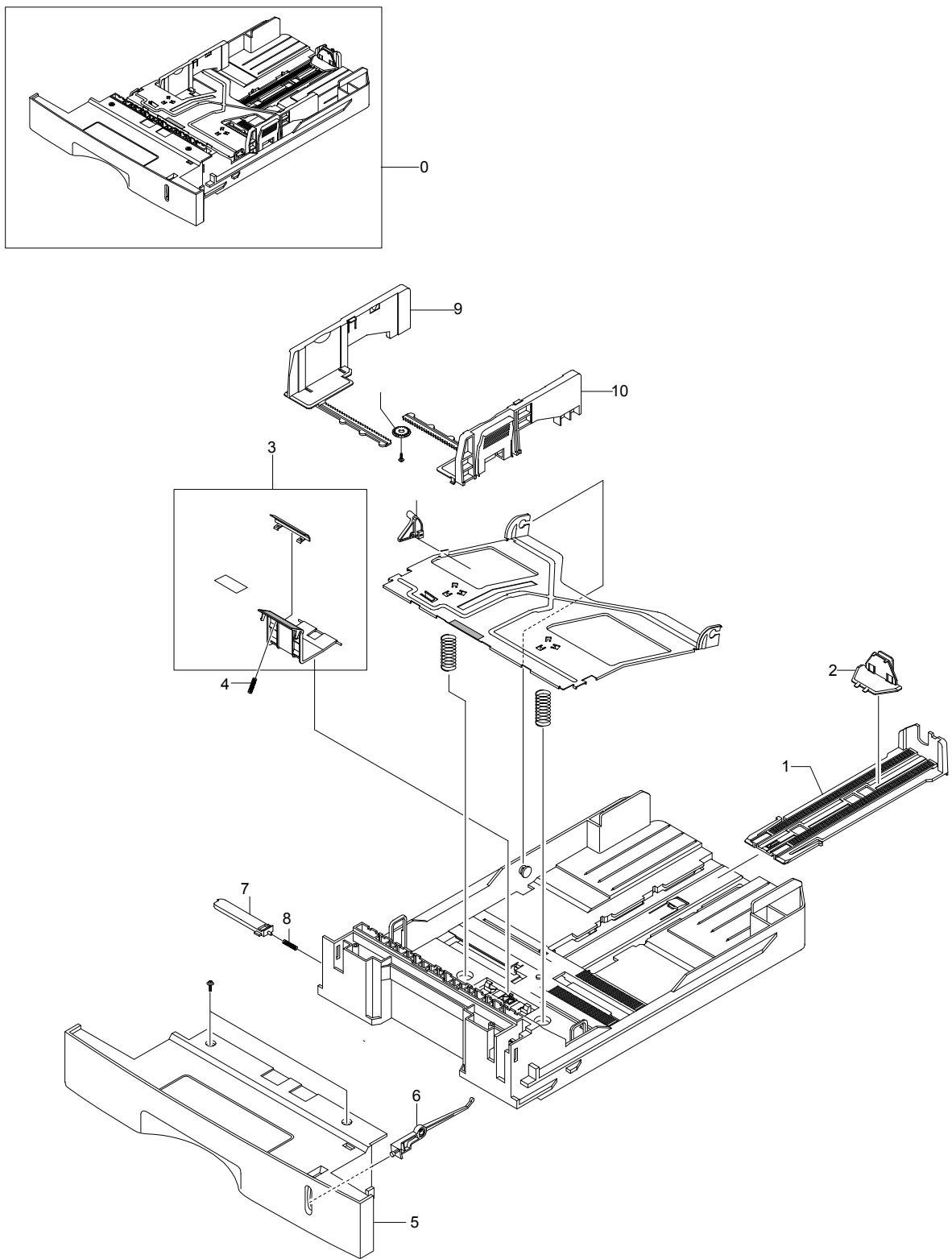
5. DRIVE UNIT ASSEMBLY



## 5.1 PARTS LIST

Index No.	Part No.	Description	Q'ty
0	G1449533	RX DRIVE ASS'Y	1
1	G1449596	GEAR 53/26	1
2	G1449597	GEAR 103/41	1
3	G1449598	GEAR 90/31	1
4	G1449599	STEPPING MOTOR	1

# 6. CASSETTE UNIT ASSEMBLY



## 6.1 PARTS LIST

Index No.	Part No.	Description	Q'ty
0	G1449535	CASSETTE ASS'Y	1
1	G1449600	EXTENSION – END	1
2	G1449601	END FENCE	1
3	G1449602	FRICTION PAD ASS'Y	1
4	G1449603	SPRING - FRICTION PAD	1
5	G1449604	COVER CASSETTE	1
6	G1449605	LEVER - PAPER INDICATOR	1
7	H9149554	LOCKER PLATE	1
8	H9149555	SPRING - LOCKER PLATE	1
9	B1739661	SIDE FENSE – L	1
10	B1739662	SIDE FENCE – R	1





# **G144/G145**

## **PARTS INDEX**



This section instructs you as to the numbers and names of parts on this machine.



## PARTS CATALOG INDEX

Part No.	Description	Section and Index No.
G1449500	TOP COVER	1-1
G1449501	EXTENSION - PAPER STACK	1-2
G1449502	OP - BUTTON	1-3
G1449503	OP- SPRING	1-4
G1449504	OP - LED	1-5
G1449505	BUSHING -PAPER EXIT	1-6
G1449506	LEFT COVER	1-7
G1449507	RIGHT COVER	1-8
G1449508	REAR COVER	1-9
G1449509	FACE UP DOOR - REAR	1-10
G1449511	REAR OPEN COVER	1-11
G1449512	FRONT COVER	1-12
G1449513	KNOB - FRONT COVER	1-13
G1449514	KNOB HOLDER - FRONT COVER	1-14
G1449515	EXTENSION - BYPASS TRAY	1-15
G1449516	ADJUSTMENT - DOCUMENT FEEDER L	1-16
G1449517	ADJUSTMENT - DOCUMENT FEEDER R	1-17
G1449518	DOCUMENT FEEDER TRAY	1-18
G1449519	GEAR - DOCUMENT FEEDER	1-19
G1449520	CASE - DOCUMENT FEEDER TRAY	1-20
G1449521	TRAY LINE - BYPASS	1-21
G1449522	SPRING - KNOB	1-22
G1449523	FRONT FRAME	1-23
G1449524	REAR COVER - PSU	1-24
G1449525	OP - BOARD	1-25
G1449526	MAIN BOARD	1-26
G1449527	PSU - 200V	1-27
G1449528	PSU - 100V	1-27
G1449529	SHIELD PLATE - MAIN BOARD	1-28
G1449530	NCU BRACKET	1-29
G1449531	TRANSFER ROLLER	1-31
G1449532	LASER UNIT	1-32
G1449533	RX DRIVE ASS'Y	1-33 / 5-0
G1449534	HARNESS - LSU	1-34
G1449535	CASSETTE ASS'Y	1-36 / 6-0
G1449536	HARNESS - RX DRIVE	1-37
G1449537	TRANSFER GUIDE UPPER	2-1
G1449538	TRANSFER GUIDE LOWER	2-2
G1449539	RUBBER FOOT BACK	2-3
G1449540	RUBBER FOOT FRONT	2-4
G1449541	MEC TERMINAL	2-5

# PARTS CATALOG INDEX

Part No.	Description	Section and Index No.
G1449542	CASSETTE COCKER	2-6
G1449543	PLATE GUIDE RIGHT	2-8
G1449544	SPRING - GUIDE	2-9
G1449545	PLATE GUIDE LEFT	2-10
G1449546	ACTUATOR - FEED	2-11
G1449547	ACTUATOR - MANUAL	2-13
G1449548	FEED ROLLER	2-14
G1449549	BUSHING - FEED ROLLER	2-15
G1449550	FEED SHAFT	2-16 / 2-33
G1449551	PAPER PICK - UP ASS'Y	2-17 / 3-3
G1449552	EARTH - TRANFSE ROLLER	2-18
G1449553	HOLDER - QUENCHING	2-19
G1449554	SPRING - TRANSFER ROLLER	2-22
G1449555	BUSHING - TRANSFER ROLLER	2-24
G1449556	BUSHING - IDLE SHAFT	2-26
G1449557	CAM - PICKUP	2-27
G1449558	SOLENOID - PICK UP	2-28
G1449559	PICK - UP GEAR ASS'Y	2-30
G1449560	BRACKET - FEED	2-31
G1449565	FUSING UNIT 110 V	2-34 / 4-0
G1449566	FUSING UNIT 220V	2-34 / 4-0
G1449567	FEED SHAFT GEAR	2-35
G1449568	IDEAL GEAR MA ASS'Y	2-36 / 3-7
G1449569	BUSHING - PICKUP	2-37
G1449570	SHAFT PICK-UP ROLLER	2-38 / 3-8
G1449571	PCB - QUENCHING	2-39
G1449572	STOPPER PICK - UP ROLLER	2-40 / 3-5
G1449573	IDLE - PICKUP	2-41 / 3-13
G1449574	BUSHING - MP ASS'Y	2-42 / 3-2
G1449575	GEAR - EXIT ROLLER	2-44
G1449576	EXIT ROLLER	2-45
G1449577	RUBBER - EXIT	2-46
G1449578	RACK - EXIT ROLLER	2-47
G1449579	EXIT SENSOR	2-48
G1449580	COOLING FAN	2-49
G1449581	MP ASS'Y	3-00
G1449582	SOLENOID - MP ASS'Y	3-1
G1449583	FRICTION PAD HOLDER	3-6
G1449584	IDEL FEED ROLLER	3-9
G1449585	PICK-UP ROLLER CAM	3-10
G1449586	FRICTION PAD	3-11
G1449587	HEAT ROLLER	4-1
G1449588	THERMISTOR	4-2

## PARTS CATALOG INDEX

Part No.	Description	Section and Index No.
G1449589	BUSHING HEAT ROLLER	4-3
G1449590	PRESSER ROLLER	4-4
G1449591	BEARING PRESSER ROLLER	4-5
G1449592	SPRING - BEARING	4-6
G1449593	HEAT ROLLER BUSHING	4-7
G1449594	HALOGEN LAMP 110 V	4-8
G1449595	HALOGEN LAMP 220V	4-8
G1449596	GEAR 53/26	5-1
G1449597	GEAR 103/41	5-2
G1449598	GEAR 90/31	5-3
G1449599	STEPPING MOTOR	5-4
G1449600	EXTENSION - END	6-1
G1449601	END FENCE	6-2
G1449602	FRICTION PAD ASS'Y	6-3
G1449603	SPRING - FRICTION PAD	6-4
G1449604	COVER CASSETTE	6-5
G1449605	LEVER - PAPER INDICATOR	6-6
G1459501	NCU	1-30
B1739602	PLATEN COVER SENSOR	3-12
B1739611	BEARING - EXIT	2-43
B1739621	ACTUATOR - COVER OPEN	2-7
B1739626	ACTUATOR - PAPER END	2-12
B1739631	SPONGE ROLLER - PICK-UP	3-4
B1739636	LENS - QUENCHING	2-20
B1739638	FEED ROLLER	2-23
B1739639	BUSHING - TRANSFER : R	2-21
B1739641	IDLE SHAFT - FEED	2-25
B1739647	SOLENOID - BYPASS	2-29
B1739651	FEED CLUTCH ASS'Y	2-32
B1739661	SIDE FENCE - L	6-9
B1739662	SIDE FENCE - R	6-10
H9149514	HARNESS - MAIN BOARD	1-35
H9149554	LOCKER PLATE	6-7
H9149555	SPRING - LOCKER PLATE	6-8