

Service
Service
Service



Philips Domestic Appliances and Personal Care

Service Manual

PRODUCT INFORMATION

Features :

- Adjustable comb attachment to set the beard length
- 9 positions, resulting beard length 1.5 - 18.0 mm
- Beard length indication window
- Zoom ring to set the comb to the requested position
- Maintenance free cutting element: no oiling required

Technical data :

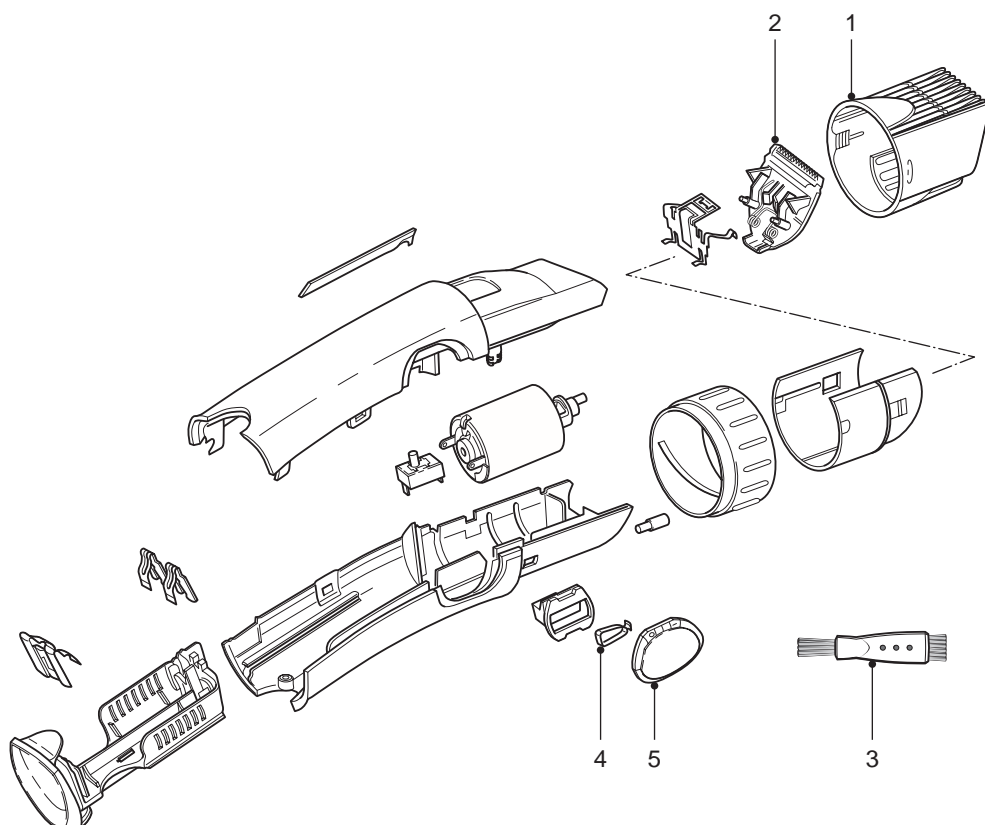
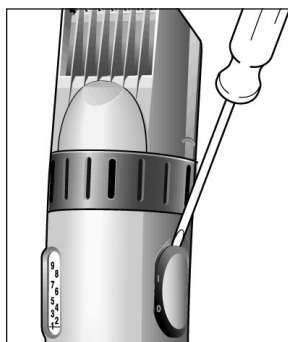
Power system : battery powered
Batteries : 2 x LR6 1.5V AA cells
Capacity : 130 minutes on Philips Alkaline batteries

Product meets the requirements regarding interference suppression on radio and TV.



PHILIPS

to replace **SPRING ON /
OFF SWITCH**



Pos	Description	Service code
1	comb	4822 690 10172
2	cutter	4822 690 10174
3	cleaning brush	4822 479 30183
4	spring on/off switch	4822 492 71508
5	slide on/off switch	4822 277 11808

After the product has been repaired , it should function properly and has to meet the safety requirements as laid down and officially established at this moment.