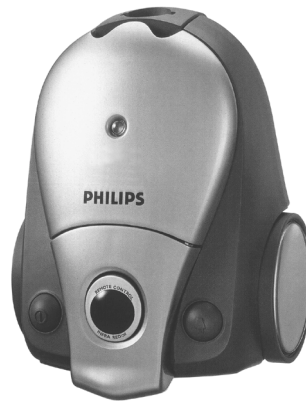


Service
Service
Service



Philips Domestic Appliances and Personal Care

Service Manual

PRODUCT INFORMATION

- Electronic controlled motor rpm
- Cordwinder build-in with flat cord
- Dustbag-full indicator in dustcover
- The Infrared remote control can adjust the suction power with 5 speeds. When switched on, the appliance always starts with the highest power, even without a connected hose. Use LR03 batteries, Alkaline is advised.
- This product meets the requirements regarding interference suppression on radio and TV.
- After the product has been repaired, it should function properly and has to meet the safety requirements as officially laid down at this moment.

TECHNICAL INFORMATION

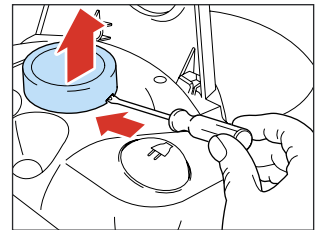
- | | |
|------------------------------------|-------------------|
| - Maximum air displacement | : 34 l/sec |
| - Maximum vacuum water column | : 280 cm |
| - Power consumptio (IEC) 225V | : 1400 W |
| - Dust storage capacity | : 2 litres |
| - Cord length (depends on version) | : 6 m |
| - Filter system | : 6 filters |
| - Dimensions cleaner | : 37 x 28 x 23 cm |
| - Weight + accessories on board | : 4.3 kg |
| - Noise | : 80 dB |
| - Colour | : Violet shadow |

DISASSEMBLY- AND RE-ASSEMBLY ADVISE

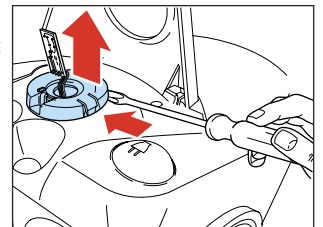
- To open the appliance, first remove the screws A,B,C,D.
- To reach the motor remove the screws E.

- To disassemble the cordwinder use Torx screw driver no T10, which is one of set consisting of :
T20, T15, T10, T9, T8, T7 and T6 = 4822 395 50145.

- First remove the 2 screws **B** of (item 15) hinge turn. Remove (item 10) window of the PCB-holder by placing a small screwdriver in the recesses on both sides of the window and opening the snap connection.



- Remove the PCB-holder of (item 10) from the upper housing by placing a flat screwdriver between the front of the PCB-holder and the upper housing as shown in the drawing. The PCB-holder has snaps which fit into the upper housing.



REPAIR INSTRUCTION

- Give attention that the contact fingers (item 45) are placed on the cord-winder shaft in such a way that the pressure point of the cordwinder knob to the cord winderlever (item 40) is vertical.
- The spare parts have been standardized as much as possible.
- Component configuration on exploded view may differ in case of specific versions, however, the actual components are distinguished by means of code numbers.
- Item 1 Cotton dustbag is used in those countries where paper dustbags are not available
- Item 41 Cord-winder spring unit is provided with a long spring, both long and short cords can be used in combination with this spring.
- Cordwinder spring has to be tensioned till maximum minus approx. 1,5 revolution.

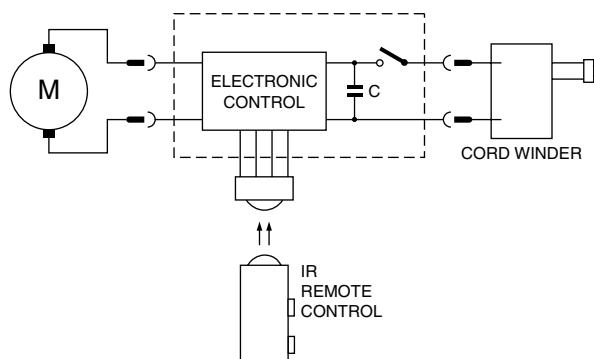
Pos	Service code	Description
1	4822 480 10113	S-paper dustbags FC8021
	8836 999 90010	Sydney 3M dustbags (opt.)
	8836 997 01010	Sydney cotton dustbag (opt.)
2	4322 009 06030	dustbag holder
3	4322 009 06150	upperhousing (canyon grey)
4	4322 001 73150	inletrubber
5	4322 003 20580	nose piece (canyon grey)
6	4322 005 13780	caster dish assy
7	4322 003 17230	fixing pin
8	4322 009 06050	lower housing (canyon grey)
9	4322 005 14000	handle (violet shadow)
10	4322 009 06180	window / holder IR-RMC
11	4322 009 06140	dust cover (violet shadow)
12	4322 001 72900	motor buffer
13	4322 001 73160	m.c. sealing
14	4322 009 08460	safety filter and holder
	4322 000 35360	safety filter (duo)
15	4322 003 20680	hinge (canyon grey)
16	4322 009 06070	cord outlet combi (canyon grey)
17	4322 003 20640	back grille (canyon grey)
18	8836 932 01210	exhaust filter
19	4322 009 06080	rear wheel (canyon grey)
20	4322 003 20600	knobs (canyon grey)
21	4322 000 09750	pedal spring
22	4322 006 22450	PCB ans 220 - 240 V receiver
22A	4322 006 50600	switch (soldered version)
23	4322 001 73270	AP cooling connection
24	4322 003 17850	motor cap
25	4322 001 72780	buffer ring front
26	4322 009 06430	motor ans 220 - 240 V
27	4322 003 11990	receptical housing (opt.)
28	4322 009 07520	motor foam / disc / ans

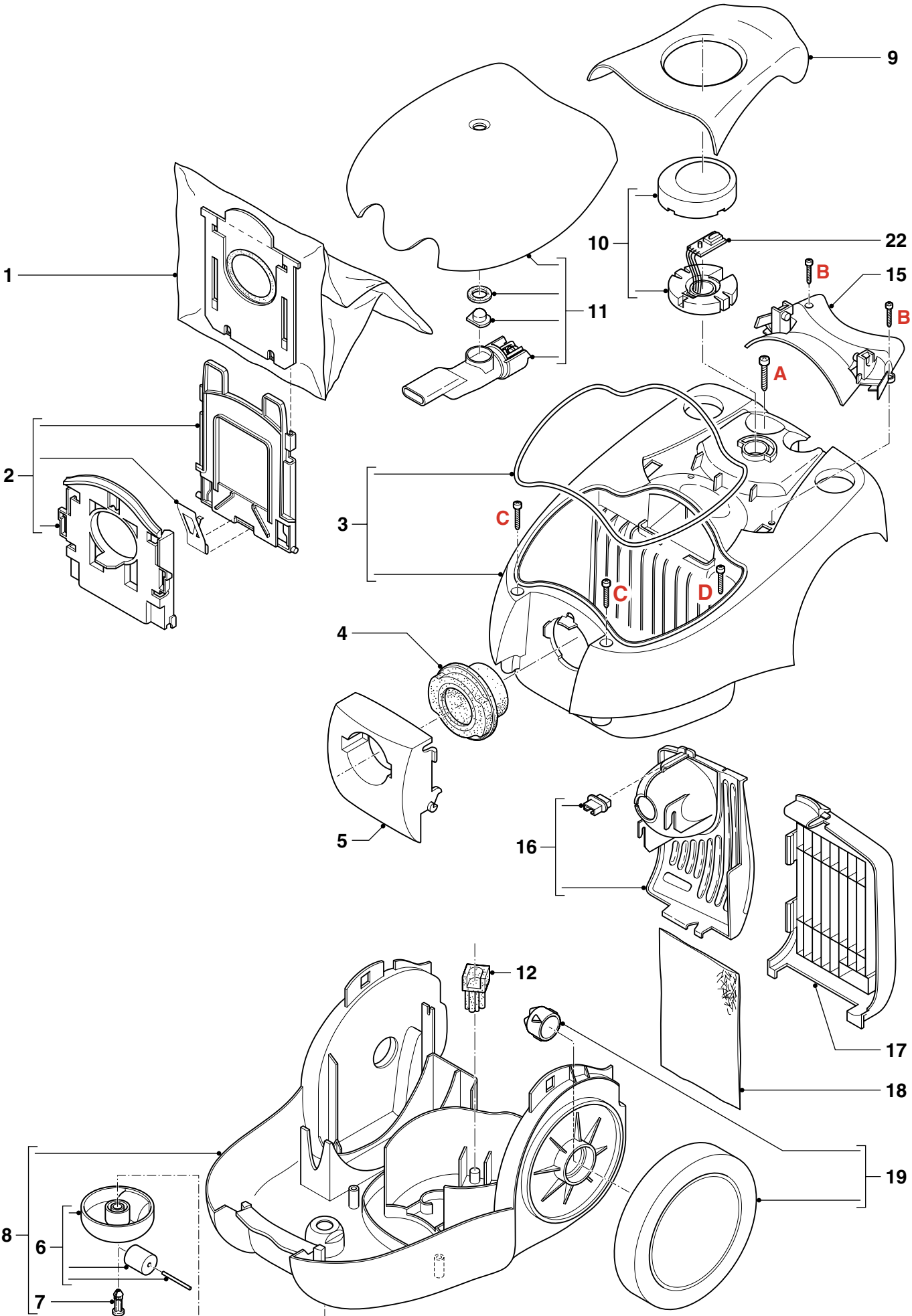
Pos	Service code	Description
40	4322 003 06620	push rod
41	4322 009 07610	reelhalf springside
42	4322 001 72360	brake tyre
43	4322 009 07640	base plate
44	4322 009 07620	reelhalf contactside
45	4322 009 07630	contact plate
46	4322 006 02110	Argentina L = 6.3 m
	4322 006 01380	Australia L = 6.3 m
47	4322 006 01770	Japan / Taiwan L = 5.3 m
48	4322 006 02100	H.K. / U.K. L = 6.3 m
49	4322 006 02060	Euro 4.8 mm L = 6.3 m
50	4322 006 02080	Swiss L = 6.3 m
51	4322 006 02070	Italy L = 6.3 m
55	4341 003 01900	crevice nozzle 118 mm
56	4322 004 22560	small nozzle
57	4322 004 22570	plumeau
58	4322 004 22490	R&C nozzle standard l.grey
59	4322 003 10070	tube clip (opt.)
60	4322 004 41140	metal tube (opt.)
61	4322 003 10020	clip telesc. tube
62	4322 004 22510	telescopic tube
63	4341 004 20590	bend + hose ass'y IR-RMC
64	4341 003 02090	bend IR-RMC
65	4322 007 31640	leaf spring
66	4322 001 99120	tube bush
67	4322 007 45550	tube spring
68	4322 006 22600	RMC
69	4322 003 19420	RMC cover
70	4322 004 22030	polishing nozzle HR8040
71	4322 005 11040	polishing disc
72	8838 041 01010	polishing brushes HR8041

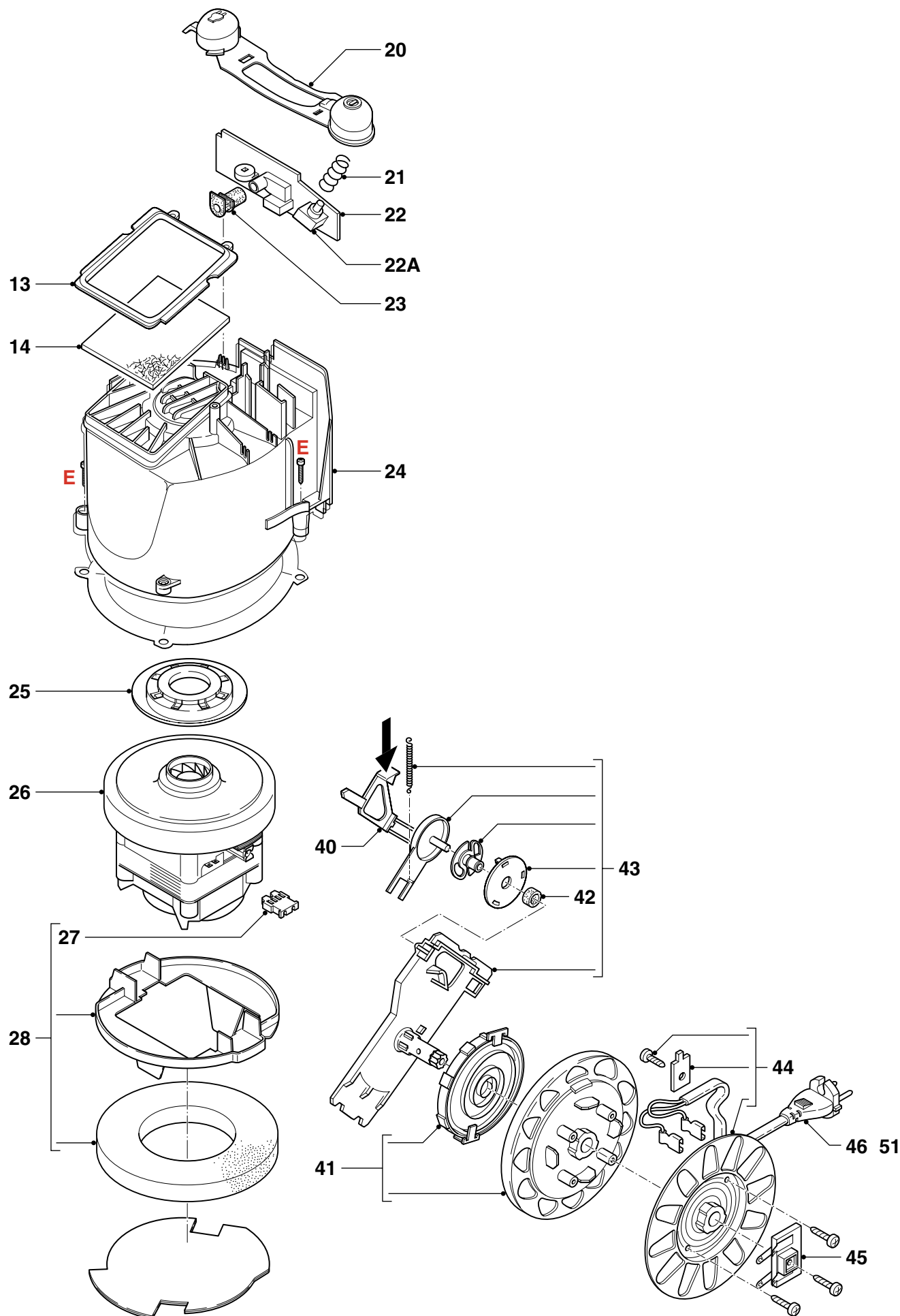
■ = changed

OPTIONAL (accessories)

Exhaust air filter	HR6932	(8836 932 01210)
Sydney cotton dustbag	HR6997	(8836 997 01010)
Sydney 3M dustbag	HR6999	(8836 999 90010)
S-paper dustbags	FC8021	(4822 480 10113)
Turbo brush	HR6988	(4822 004 22130)
Polishing nozzle	HR8040	(4322 004 22030)







EXPLODED VIEW

FC8412

