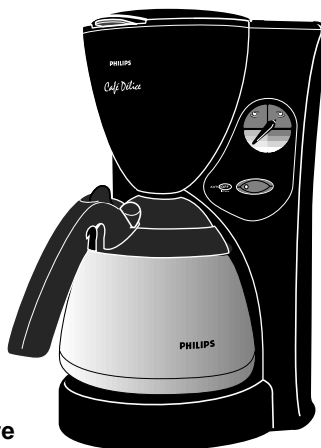
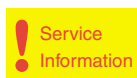


Service Service Service



Philips Domestic Appliances and Personal Care

Service Manual

SAP coding HD 7613/0

PRODUCT INFORMATION

Voltage : 230V
Frequency : 50 - 60Hz
Power consumption : 1400W/850W
Contents jug : 1200 cc
Coloursetting : ?

SERVICE INFORMATION

Thermostat switch-off temp : 160°C (T1)
Thermostat switch-off temp : 140°C (T2)
Thermal fuse cut-off temp : 227°C

REPAIR INSTRUCTIONS

1. Electrical circuit

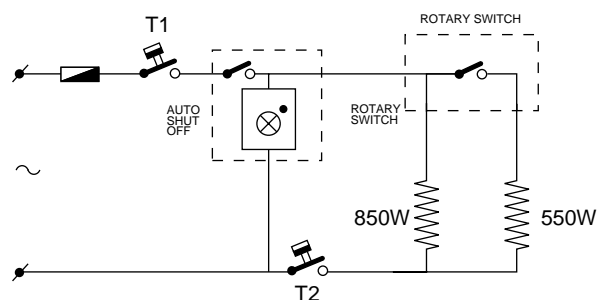
When the appliance does not work, check the electrical circuit. If the thermal fuse or thermostat prove defective, the complete pump unit has to be replaced.

2. De-scaling

If the water system is nearly or less clogged by scale then operate the coffeemaker a few times with vinegar or with a 10-15% solution of either vinegar-acid, citric acid or tartar-acid, into cold tap water.

Do not use other de-scaling agents as these may harm the appliance.

If this procedure does not restore the function, then switch off the coffeemaker when the acid has passed through during appr. 3 min. Keep the appliance in this condition overnight and continue/repeat the cleaning operation. After the de-scaling procedure, operate the coffeemaker twice with tap water in order to rinse away any residual substances.



3. Pump unit removal

To separate the pump unit (item 24) from the hotplate unit (item 22), the two plastic snaps at place A have to be loosened. Then the pump unit can be lifted out easily.

4. Exchanging the switch unit

Remove the panel (11) by carefully pushing a small screwdriver into the chink at point A and moving it towards to point B (see exploded view). Do not damage the housing. If the panel has been damaged, get a new one.

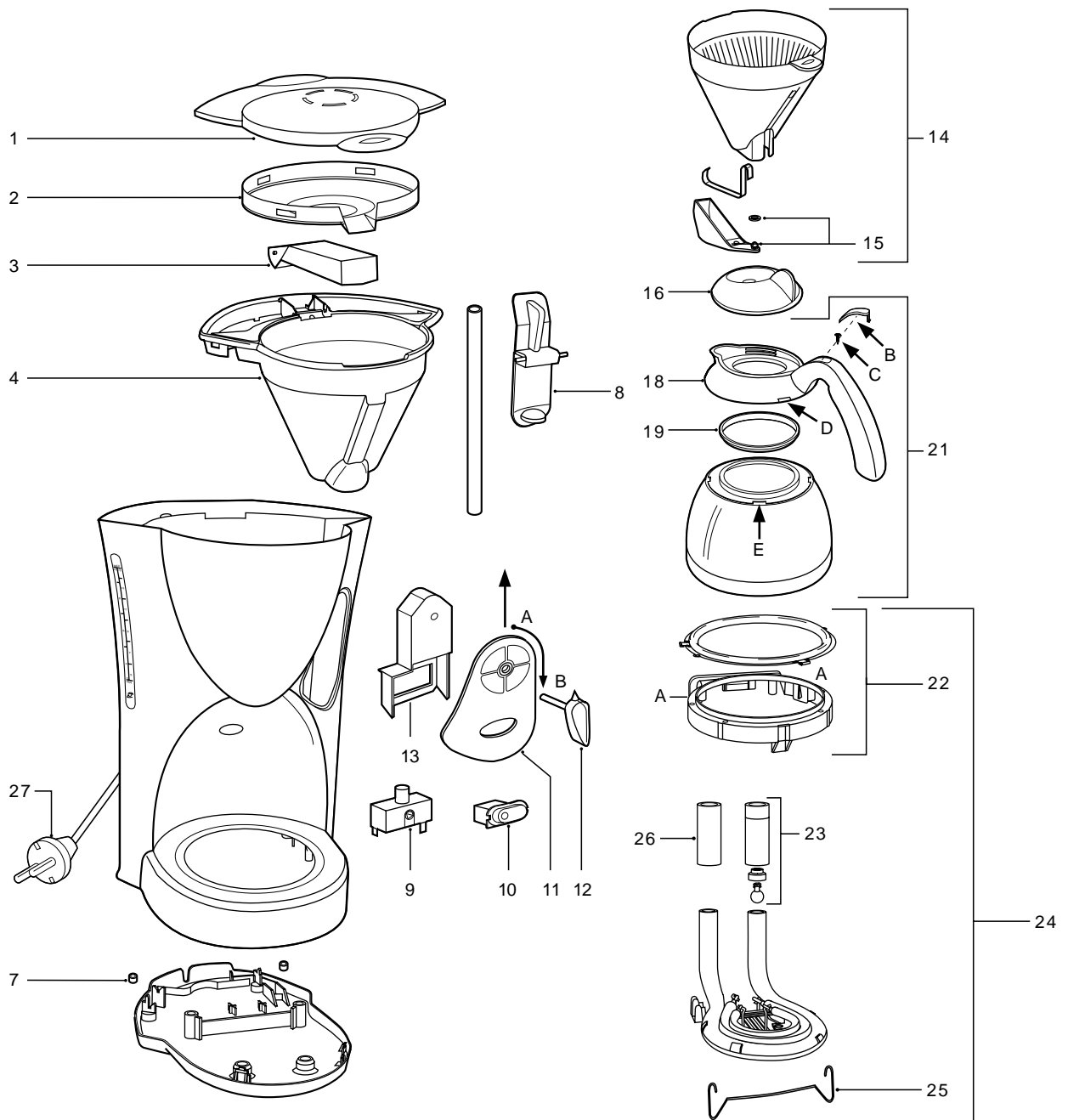
5. Thermosjug handgrip removal (bajonet catch)

To separate the handgrip 18 from the metal jug, lift up the small cover B and unscrew the screw C. Then put a small screwdriver at place D. Lift up the handgrip and turn simultaneous the handgrip anti-clockwise 45°.

Before (re)placing the handgrip, apply a drop of detergent to the sealing ring 19. This will make it easier to position the handgrip by pushing it downwards and rotating.



HD 7613/0



| | | |
|----|----------------|--------------------------------------|
| 1 | 4222 247 58520 | Tank lid |
| 2 | 4222 247 58540 | Spout disc |
| 3 | 4222 247 58530 | Spout |
| 4 | 4222 247 58510 | Rim |
| 7 | 4222 447 05680 | Stud |
| 8 | 4222 247 58440 | Jug lever |
| 9 | 4222 246 23640 | Rota switch |
| 10 | 4222 246 25390 | Aso switch |
| 11 | 4222 259 02210 | Panel printed |
| 12 | 4222 247 55770 | Rota button |
| 13 | 4222 247 55780 | Switch casing |
| 14 | 4222 259 01400 | Filterholder assy |
| 15 | 4222 259 01410 | Drip stop assy |
| 16 | 4222 259 02220 | Lid assy |
| 18 | 4222 259 02360 | Carrier assy (pos. 18 + B + screw C) |

| | | |
|----|----------------|---------------------|
| 19 | 4222 247 06740 | Sealing ring |
| 21 | 4222 259 02340 | Thermos jug assy |
| 22 | 4222 259 01820 | Hotplate unit therm |
| 23 | 4822 360 50864 | Valve hose assy |
| 24 | 4222 259 29470 | Pump 1400 W therm |
| 25 | 4822 492 71174 | Wire spring |
| 25 | 4822 532 21371 | Hose piece |
| 27 | 4222 246 25150 | Cord set EURO |

Notes:

- Optional part for use as an insert in item 5:
4822 480 50479 Permanent filter nylon
4822 480 50402 Permanent filter gold coated
- Commercial trade number of the complete thermosjug is HD 7962