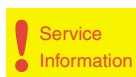


Service
Service
Service



Philips Domestic Appliances and Personal Care

Service Manual

SAP coding GC 6007

PRODUCT INFORMATION

Features : carezza sole plate
boiler capacity 1 litre
length steam hose 1,9 metre
length cord set 1,9 metre
maximum steam output 80 gr/min
steam ready indicator
boiler empty indicator
shot of steam
front steam
variable steam

Voltage : 220-240 Volt

Frequency : 50-60 Hz

Power consumption : Boiler : 1200 Watt
Pressure : 3,5 bar
Iron : 800 Watt

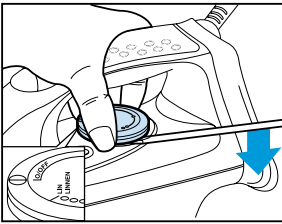
Product meets the requirements regarding interference suppression on radio and television.

- After the product has been repaired, it should function properly and has to meet the safety requirements as laid down officially established at this moment.



DISASSEMBLY ADVISE IRON

DIAL 1



RATTLE SPRING 11

BACK PLATE 2

remove **SCREW A**
 remove **CORD CLAMPING**
 remove **SCREW (2x)**
 remove **CONNECTIONS**
 remove **HOSE**

INLAY 4

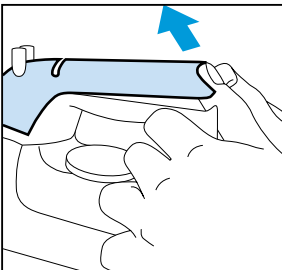
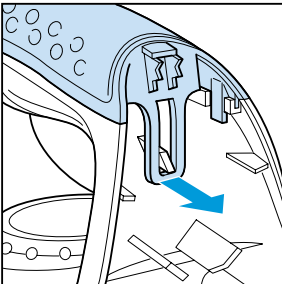
CONTROL BUTTONS 6

SPRAY NOZZLE 7

PILOT LIGHT 10

SLIDE UNIT 9

remove **SCREW B (2x)**



HANDLE 10

remove **SCREW C (3x)**

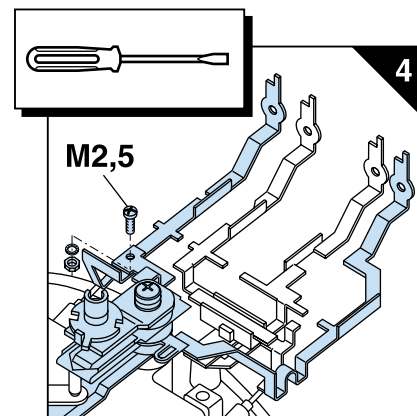
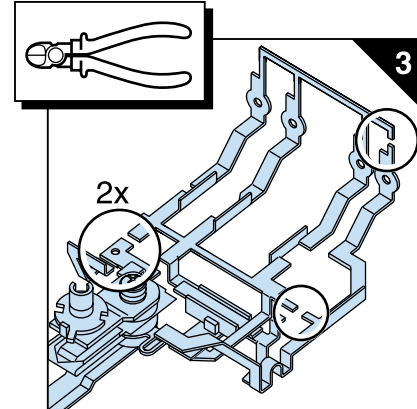
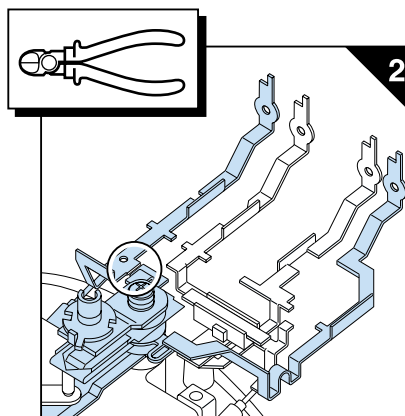
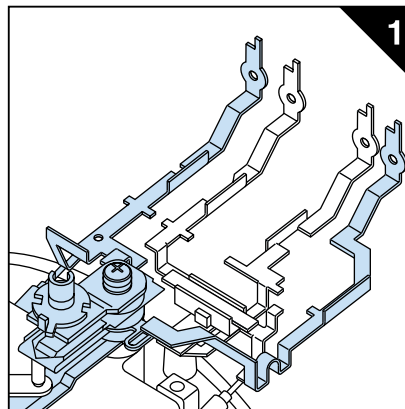
STEAM CONTROL ASSY 19

remove **SCREW D**
 remove **SWITCH HOUSING 15**
 remove **JOS ACTUATOR ASSY 7**
 remove **SOS ACTUATOR ASSY 13**

SKIRT (HB) 12

remove **SCREW F (3x)**

Replacement Thermostat see fig. I-4

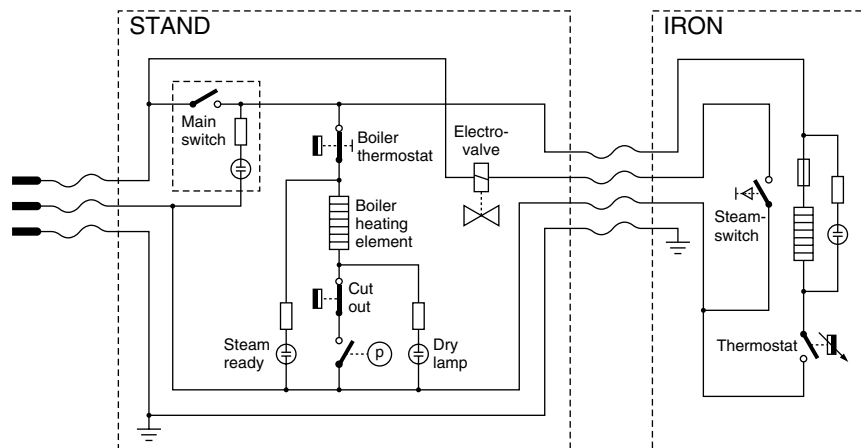


NOTES :

- For standardisation reasons :

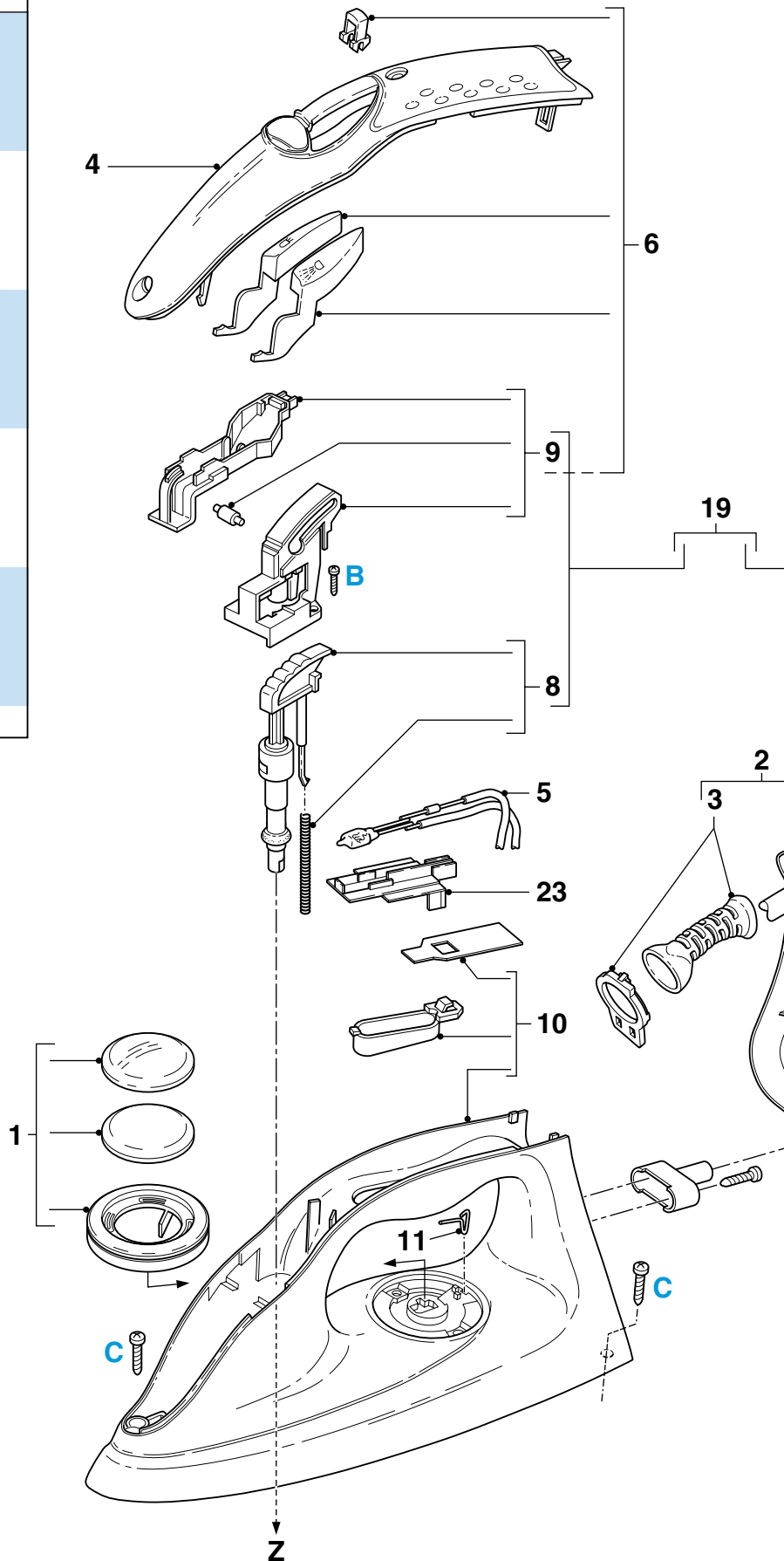
Dial (1) : Dutch / French language only
 Suction tubes stand : Only 27 cm long tubes will be supplied
 Rattle spring (11) : 5 pieces will be supplied when ordered

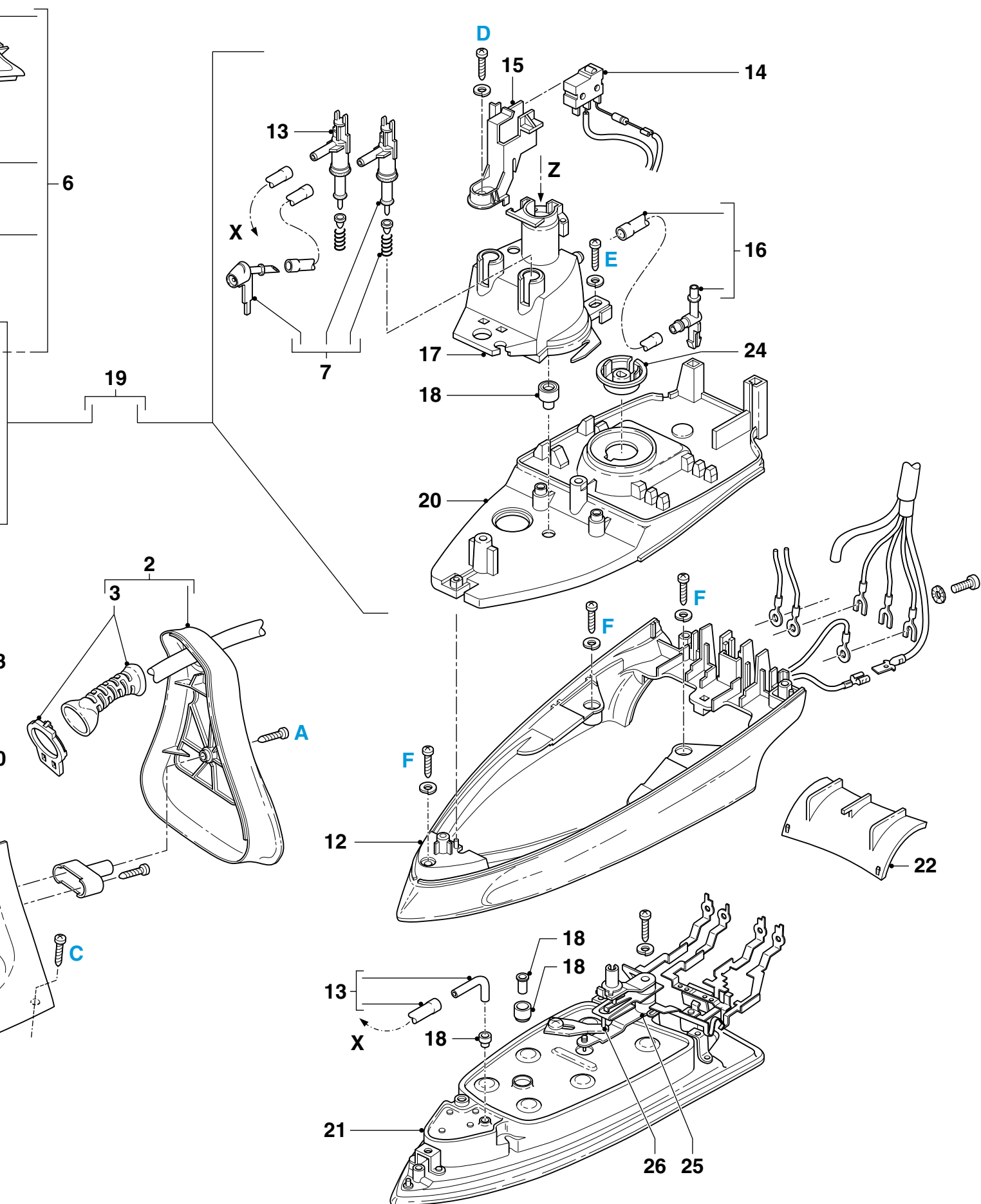
For opening you need a Torx screwdriver 362 TR T20 x 100.



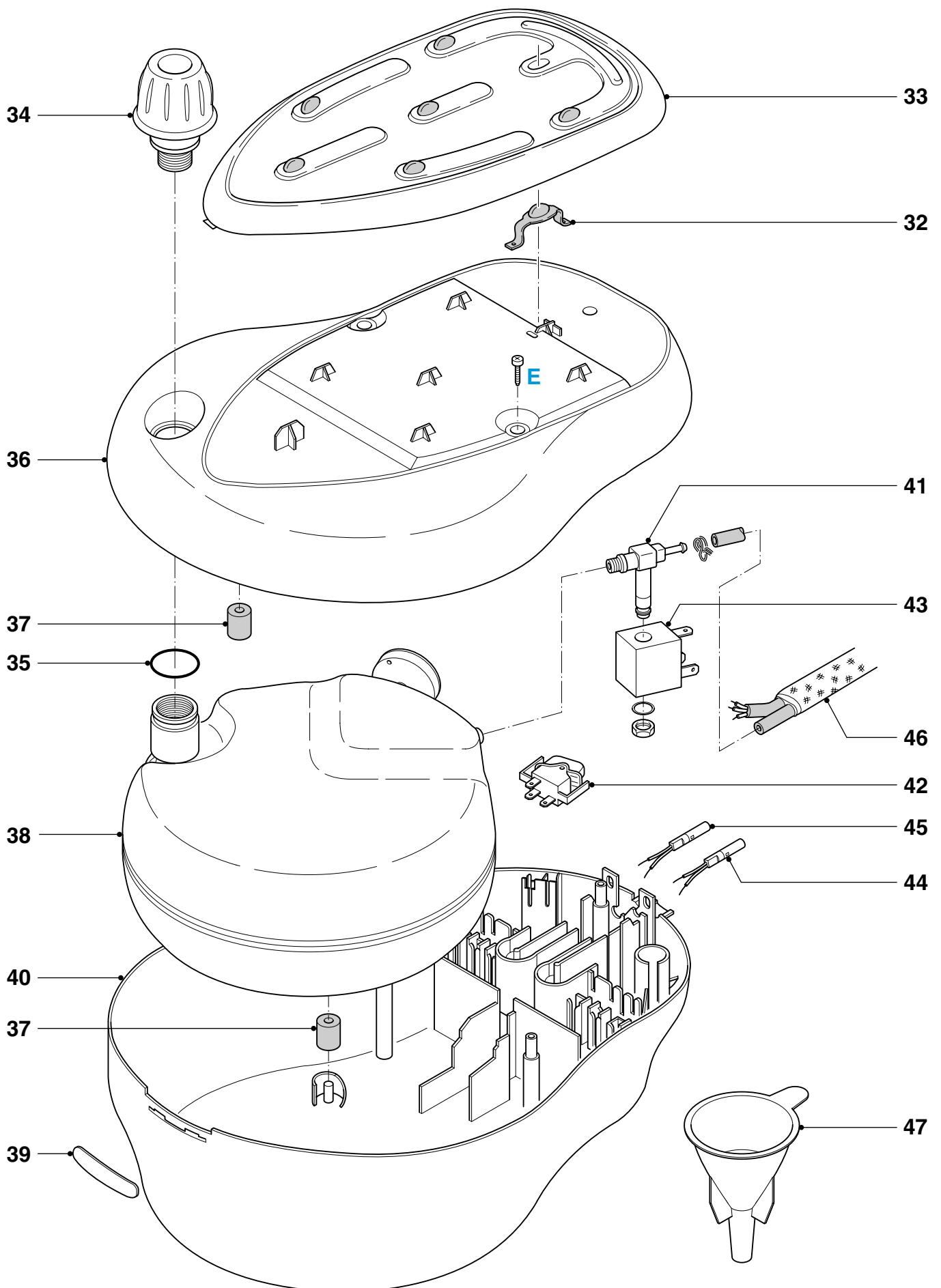
PARTS LIST + EXPLODED VIEW IRON

Pos	Service Number	Description
1	4822 310 11417	Kit dial
2	4822 310 11418	Kit backplate
3	4822 310 11157	Kit swivel
4	4822 442 01896	Inlay printed assy
5	4822 134 10146	Lamp assy
6	4822 310 11421	Kit knobs
7	4822 360 10459	JOS actuator assy
8	4822 690 10225	Dosing assy
9	4822 310 11422	Kit slide unit
10	4822 310 11423	Kit handle
11	4822 310 11021	Rattle spring (5x)
12	4822 442 01807	Skirt (HB)
13	4822 360 10461	SOS actuator assy
14	4822 277 11884	Microswitch assy
15	4822 441 12368	Switch housing
16	4822 310 11424	Kit tubes
17	4822 441 12369	Dosing housing welded
18	4822 310 11425	Kit sealings
19	4822 690 10226	Steam control assy
20	4822 464 10531	Baseplate 2
21	4822 259 10331	Soleplate mtd assy
22	4822 454 13475	Type plate
23	4822 256 10582	Lamp holder
24	4822 532 13161	Thermostat bush
25	4822 282 10315	Thermostat
26	4822 535 10469	Pin thermostat





EXPLODED VIEW STAND



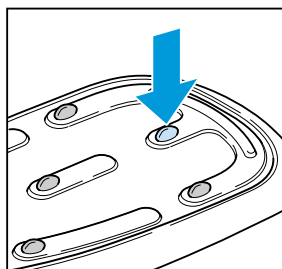
PARTS LIST + DISASSEMBLY ADVICE STAND

Pos	Service Nummer	Description
32	9965 000 08193	Tray rubber foot for fixation
33	9965 000 08194	Complete tray
34	9965 000 08244	Safety cap for boiler
35	9965 000 01782	Filling hole gasket for alu boiler
36	9965 000 08245	Superior stand printed
37	4822 462 71999	Boiler rubber feet
38	9965 000 08243	Complete boiler
39	9965 000 08201	Locket insert
40	9965 000 08202	Inferior stand
41	9965 000 01790	Filter
42	9965 000 08203	Main switch
43	4822 218 11561	Electrovalve
44	9965 000 01901	Steam ready light
45	9965 000 01902	Boiler empty light
46	9965 000 07437	Intermediate cable
47	9965 000 08246	Funnel

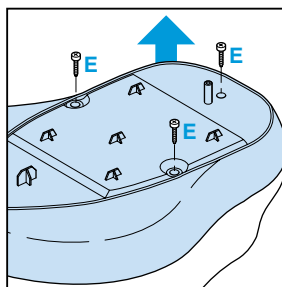
ADJUSTMENT AND CONTROLS

- To avoid leakage of the sealings and damage to the components in and on the boiler, **NEVER** clean the boiler with vinegar, a descaling agent or other chemicals.
- The boiler doesn't contain serviceable parts. Never disassemble the boiler body and /or components on and in the boiler.
- **ALWAYS REPLACE THE BOILER (28) WHEN:**
 - * the mechanical safety valve (24) has been activated.
 - * the boiler thermostat or hand - resettable safety thermostat are open, because the boiler has been subjected to too high temperatures.
 - * the electrovalve (33) fails or the sieve is soiled with scale.
- After the product has been repaired, it should function properly and has to meet the safety requirements as laid down and officially established at this moment.

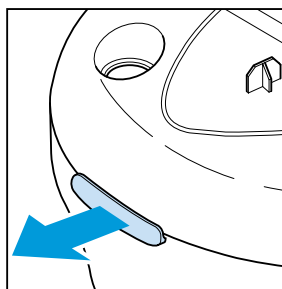
OPEN THE STAND



pressure fixation rubber through the tray



remove **SCREW E (3 x)**



remove **LOCKED INSERT 39**

NOTE:
OPEN NOW THE STAND.
DON'T WORRY IF THE SNAPS AT THE SIDE WILL BE BROKEN.
THEY ARE ONLY FOR THE ASSEMBLY.
THE STAND REMAINS CLOSE WITHOUT THESE SNAPS.