

Service
Service
Service



Domestic Appliances and Personal Care

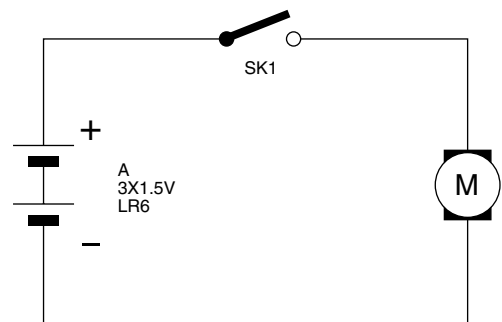
Service Manual

SAP Coding HQ 300

HINTS FOR REPAIRS

DISASSEMBLY

- Remove the shaving unit, to prevent damages during repairs.
- Remove the batterieholder.
- Unlock the snaplocks from the tailpart.
- Lift the motor unit out of the housing.
- Loosen the motor clamp springs on the bearing block of the motor with a small screwdriver.
- Unlock the peg-clamping 'Z' (2X) between frame (item 7) and hair chamber (item 5).



ASSEMBLY

- The assembly must be carried out in the reverse order of what is discribed under Disassembly.
- When fitting the shaver it must be checked if wiring is correctly positioned.

TECHNICAL DATA

| | |
|-------------------|---------------------|
| Operating voltage | : 4.5V \equiv |
| Power supply | : 3X AA/LR6 battery |
| Shaving heads | : 2X HQ3 |
| Comfort control | : fixed setting |

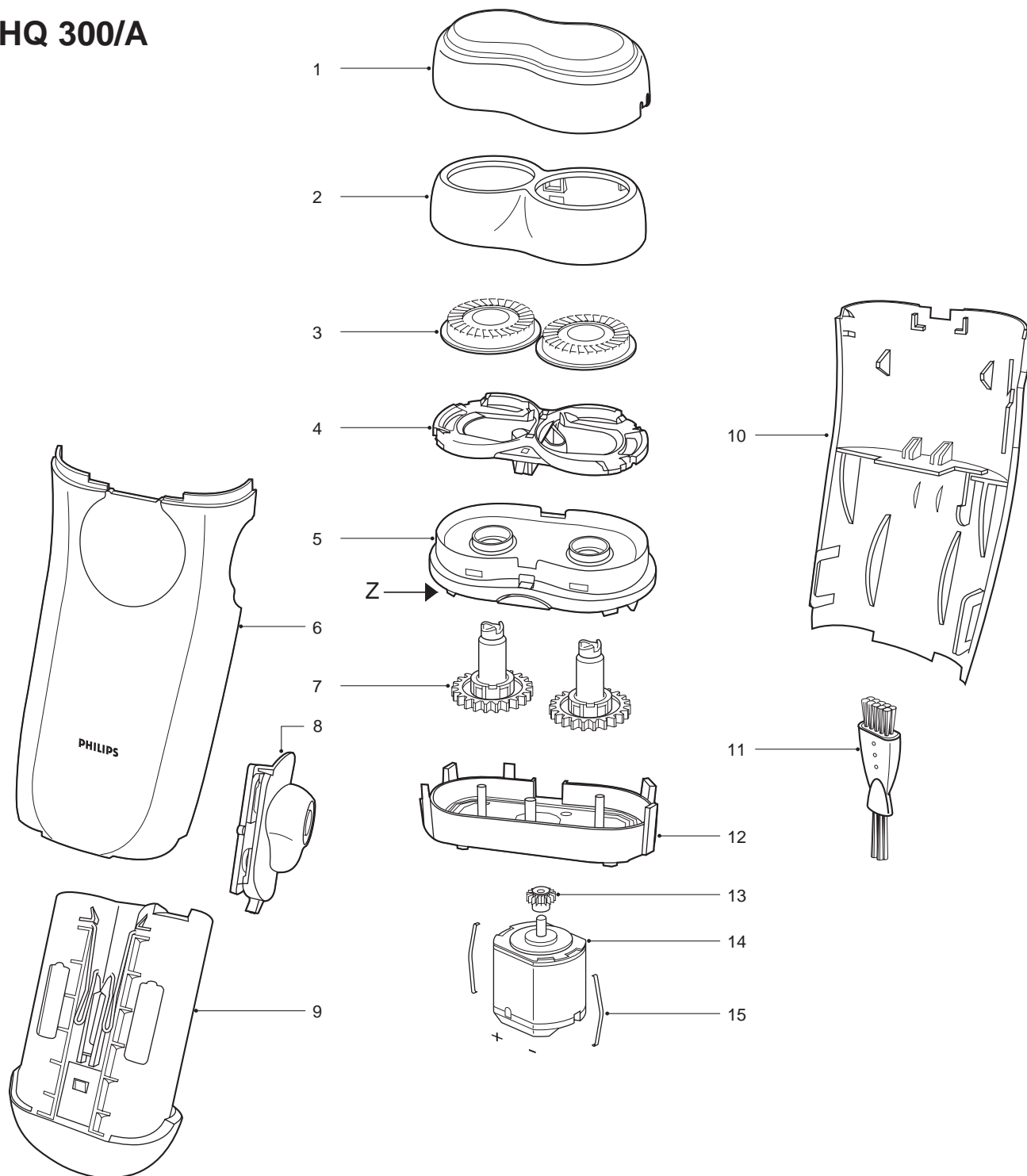
PRODUCTS MEETS THE REQUIREMENTS REGARDING INTERFERENCE SUPPRESSION ON RADIO AND TELEVISION.

- AFTER THE PRODUCT HAS BEEN REPAIRED IT SHOULD FUNCTION PROPERLY AND HAS TO MEET THE SAFETY REQUIREMENTS AS LAID DOWN OFFICIALLY ESTABLISHED AT THIS MOMENT.



PHILIPS

HQ 300/A



- | | | |
|----|----------------|------------------|
| 1 | 4222 036 01330 | Protection cap |
| 2 | 4222 036 01340 | Head housing |
| 3 | 4822 690 30471 | HQ3 shaving head |
| 4 | 4222 036 02780 | Head holder |
| 5 | 4222 036 01550 | Hairchamber |
| 6 | 4222 036 01940 | Housing |
| 7 | 4222 036 01790 | Gearwheel |
| 8 | 4222 036 01810 | On/off knob |
| 9 | 4222 036 01900 | Battery holder |
| 10 | 4222 036 01880 | Cover |
| 11 | 4222 036 02770 | Cleaning brush |
| 12 | 4822 464 30194 | Frame |
| 13 | 4822 522 33039 | Pinion |
| 14 | 4222 036 01800 | Motor 4.5V |
| 15 | 4822 492 63165 | Motor clamp |