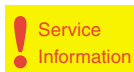
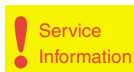


Service Service Service



QUADRA ACTION



Domestic Appliances and Personal Care

Service Manual

HINTS FOR REPAIRS

- Remove the shaving unit, to prevent damages during repairs.
- Remove screws A1 (2x, of which 1 is under trimmer slide).
- Take cover with trimmer from housing.
- Remove bracket (16 + 22).
- The PC-board can now be removed from the housing.
- Remove screws B1 (2x) the motor and hair-chamber can now be removed from the housing.
- Detach the motor clamping spings (item 19) on the bearing block with a small screwdriver.

GENERAL

- Only mainshaver possible.
- Converts input voltage 8-16V dc to constant motorvoltage of appr. 6.2V.
- Electronic on/off.
- Overcurrent protection

TECHNICAL DATA

Voltage	: 100-240 V 50/60Hz
Power consumption	: Motor depending
Motor voltage	: 3.6 V...
Power supply	:
Speed of cutters	: > 2100 r.p.m.
Shaving heads	: HQ6 - 4822 690 10214

SAP CODING: 8856 425 99999

CAUTION!

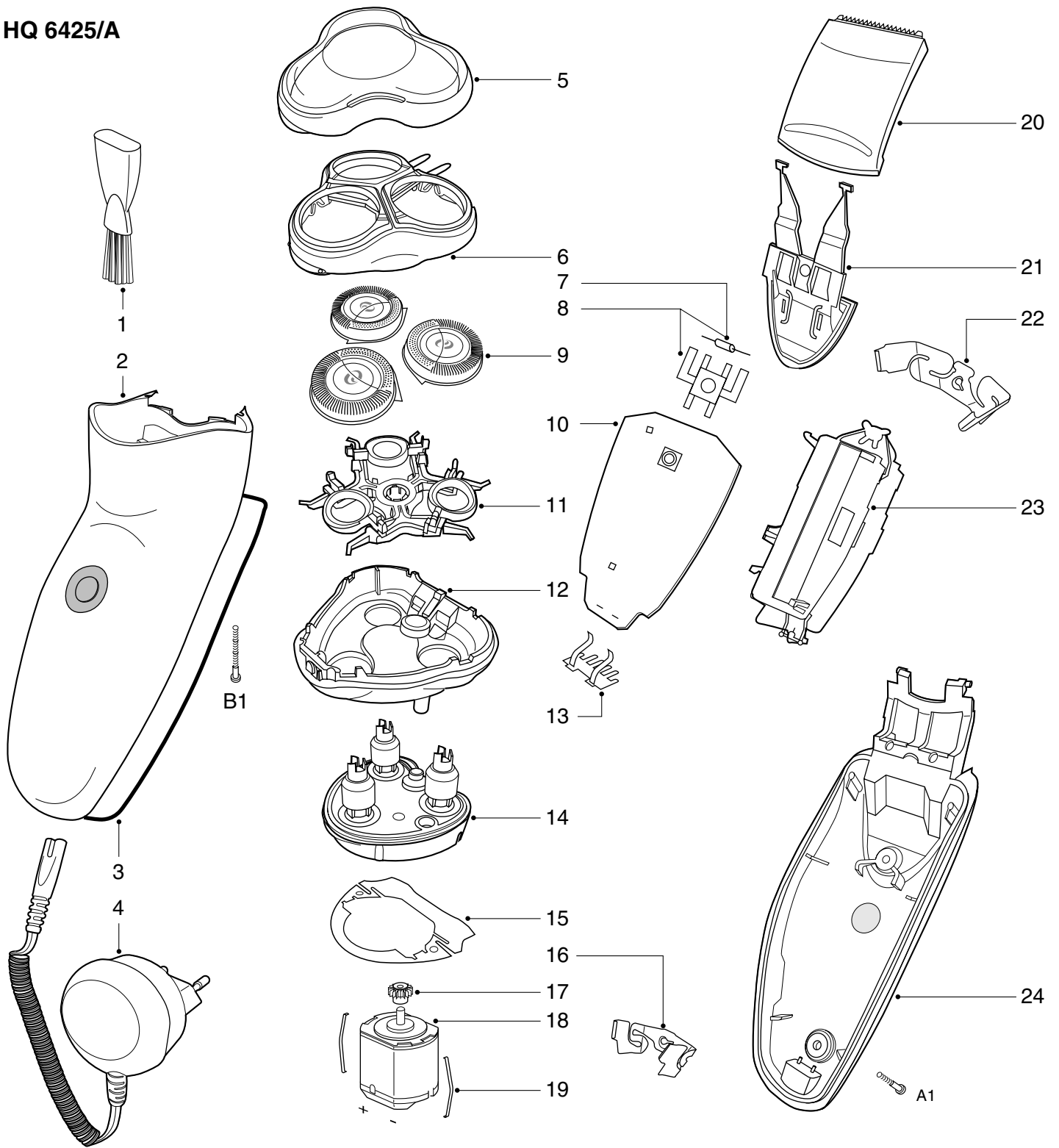
WHILE CHECKING THE P.C.-BOARD REMEMBER THAT MOST COMPONENTS AND MOTOR ARE ENERGIZED BY MAINS VOLTAGE.

PRODUCTS MEETS THE REQUIREMENTS REGARDING INTERFERENCE SUPPRESSION ON RADIO AND TELEVISION.

- AFTER THE PRODUCT HAS BEEN REPAIRED IT SHOULD FUNCTION PROPERLY AND HAS TO MEET THE SAFETY REQUIREMENTS AS LAID DOWN OFFICIALLY ESTABLISHED AT THIS MOMENT.



HQ 6425/A



- | | | | | | | | |
|----|----------------|--------------------|----|----------------|---------------------|----------------|-----------------------------|
| 1 | 4822 479 20261 | cleaning brush | 12 | 4822 442 01819 | hairchamber PH | 4822 600 10856 | pouch PH |
| 2 | 4822 441 12342 | housing PH | 13 | 4822 265 11548 | connecting pins | 4822 736 16901 | DFU (1) |
| 3 | 4822 466 12232 | rubber seal | 14 | 4822 522 10762 | gearwheel unit | 4822 736 16902 | DFU (2) |
| 4 | 4822 219 10711 | power plug EU | 15 | 4822 466 12233 | sealing plate | 4822 736 16903 | DFU (3) |
| | 4822 219 10713 | power plug E-EU | 16 | 4822 402 11318 | bracket small | 4822 736 16904 | DFU (4) |
| | 4822 219 10715 | power plug GB | 17 | 4822 522 10763 | pinion | 4822 736 16905 | DFU (5) |
| | 4822 219 10716 | power plug CDN/TWN | 18 | 4822 361 11177 | motor | 4822 736 16906 | DFU (6) |
| | 4822 219 10718 | power plug AUS/NZ | 19 | 4822 492 71735 | motor clamp | (1) | GB D N S FIN DK GR |
| 5 | 4822 462 11177 | protecting cap | 20 | 4822 690 10213 | trimmer | (2) | GB D F NL E P I TR |
| 6 | 4822 441 12327 | head housing | 21 | 4822 463 11257 | trimmer slide | (3) | GB RUS PL EST LV LT |
| 7 | 4822 122 30103 | cer. cap. 22nF/63V | 22 | 4822 402 11317 | bracket large | (4) | GB RUS UA HR SLO CZ SK H RO |
| 8 | 4822 265 11613 | connector | 23 | 4822 532 13151 | spacer 4/5A | (5) | GB CN RC ROK T MAL RI VN |
| 9 | 4822 690 10214 | HQ6 shaving head | 24 | 4822 442 01818 | cover | (6) | GB Arab Farsi E P/BR F |
| 10 | 4822 214 13053 | power module | A | 4822 502 14657 | s.t.screw spec/T8 | | |
| 11 | 4822 402 11319 | retaining bracket | B | 4822 502 14544 | s.t.screw 1.8x18/T8 | | |

