

Service
Service
Service



Philips Domestic Appliances and Personal Care

Service Manual

PRODUCT INFORMATION

Features

- Colour white/green
- Aluminium soleplate
- Tank capacity (150 ml)
- Integrated calc clean
- Steam rate (15 g/min)

TECHNICAL INFORMATION

Voltage	: 220-240 V
Frequency	: 50-60 Hz
Power consumption	: 1200 W, 1450 W
Water advice	: Suitable for tap water use. However if the tap water in your area is very hard, we advise you to mix it with a equal portion of distilled water or to use distilled water only.

Soleplate

The Aluminium soleplate used is smooth and corrosion free which treats fabrics gently.

Calc clean

The integrated Calc clean function ensure a longer lifetime using normal tap water by removing the scale out of the steam chamber.

This product meets the requirements regarding interference suppression on radio and TV.

DISASSEMBLY ADVICE + PARTS LIST

BACKPLATE 3

LAMP ASSY 6

SWIVEL 7

CORDSET 8

INLAY 4

Remove **Screw A** 1x
 Remove **Backplate 3**
 Remove **Lamp assy 6**
 Remove **Swivel 7**
 Remove **Cord set 8**
 Remove **Dosing assy 1**
 Remove **Screw B** 1x
 Remove **Inlay 4**

DIAL 2

TANK SET 5

THERMOSTAT BUSH 9

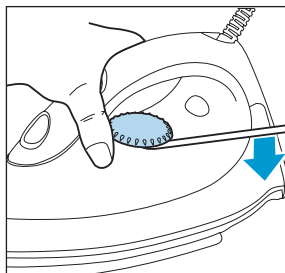
COVER 10

ISOLATION STUD 11

COVER SEAL 12

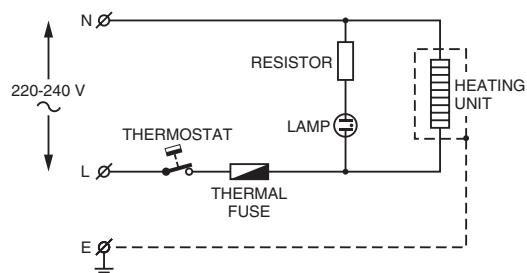
SOLEPLATE ASSY 14

Remove **Dial 2**

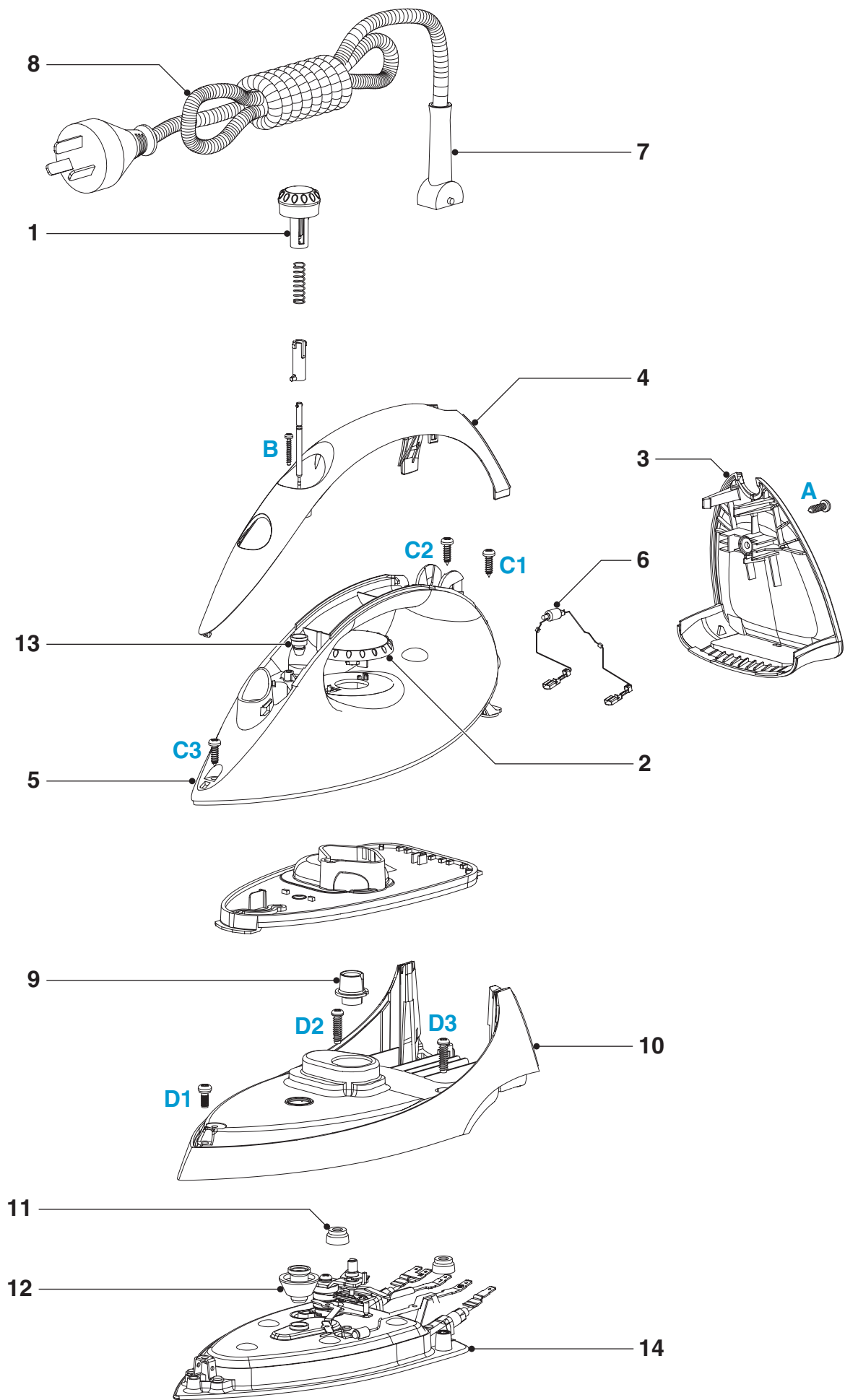


Remove **Dosing assy 1**
 Remove **Screw B** 1x
 Remove **Inlay 4**
 Remove **Screw C** 3x
 Remove **Tank Set 5**
 Remove **Thermostat bush 9**
 Remove **Screw D** 3x
 Remove **Cover 10**
 Remove **Isolation stud 11**
 Remove **Cover seal 12**
 Remove **Soleplate assy 14**

Pos	Description	Service code
1	Dosing assy (non extra steam)	4239 021 14550
2	Dial (printed)	4239 021 14540
3	Backplate	4239 026 12140
4	Inlay (non spray)	4239 026 12090
5	Tank set (non spray)	4239 022 53640
6	Lamp assy	4239 021 14520
7	Swivel	4239 025 96960
8	Cordset Eu	4239 000 06800
	Cordset PRC	4239 000 07130
9	Thermostat Bush	4239 026 12830
10	Cover	4239 026 12070
11	Isolation stud	4239 015 70150
12	Cover seal	4239 015 52140
13	Tank seal	4239 015 54210
14	Soleplate assy	4239 022 53660



EXPLODED VIEW



NOTES

NOTES :

- 1) For standardisation reasons, Cerelon coated soleplate will be supplied for GC 1121, 1120, 1115, 1110 and Aluminium soleplate for GC 1015, 1010, 1005.
- 2) Parts with numbers from 100 and higher, cannot be ordered separately.
- 3) In case of any defect in thermostat, the complete soleplate has to be resplaced.
- 4) No information about the type number has been stamped into the type plate.
When replacing the type plate, engrave at least type number and voltage onto the type plate with a tool.
- 5) After the product had been repaired, it should function properly and has to meet the safety requirement and legal regulations set by the related country.