



Philips Domestic Appliances and Personal Care

# Service Manual

## PRODUCT INFORMATION

### Features

- Dynaglide soleplate coating
- Spray feature
- Self clean function
- Steam output (15 grams/min)
- Extra steam setting (25 grams/min)
- Water tank capacity 170 ml
- Auto-Shut-Off (ASO) feature

### Safety Information

- This product meets the requirements regarding interference suppression on radio and TV.
- After the product has been repaired, it should function properly and has to meet the safety requirements as officially laid down at this moment.

## TECHNICAL INFORMATION

Voltage	: 100 ~ 120 V
	: 220 ~ 240 V
Frequency	: 50 ~ 60 Hz
Power consumption	: 900 ~ 1100 W
	: 1200 ~ 1440 W
Dimension (F-box)	: 272 x 112 x 140 mm <sup>3</sup>
Weight	: 1100 grams

### Self Clean

When the self clean button is pushed, a sudden flow of water is released from the tank into the soleplate. This thermal shock will cause water scale particles to come loose from the steam chamber. These particles are then flushed out through the steam vents by the water.

### Auto-Shut-Off (ASO)

This is an energy saving feature that automatically cuts off the power when the iron has been motionless:

- for 30 seconds in the horizontal position
- for 8 minutes in vertical position

When the iron is moved, it automatically switches on again.

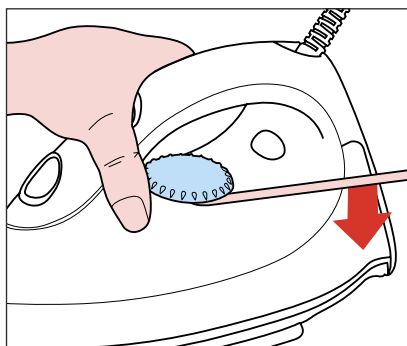
NB: When the iron is plugged in at a horizontal position, it will not be switched off during the first 2 minutes to ensure proper heating up.

**CORD SET 5****PUMP 2****PILOT LIGHT COVER 9****PILOT LIGHT 10**

- remove DOSING UNIT 1  
 remove SPRAY KNOB 3  
 remove screw A (2x)  
 remove screw B (1x)  
 remove INLAY 4  
 remove screw C (2x) (cord clamp)

**TANK SET 11**

- remove DIAL 7

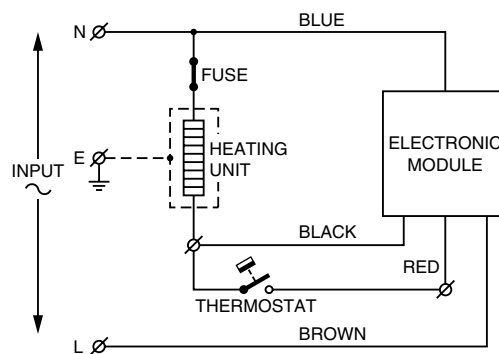


- remove screw D (2x)

**COVER 12****SOLEPLATE 15****ISOLATION STUD 13**

- remove screw E (3x)

Pos	Service code	Description
1	4239 021 17300	Dosing assembly (extra steam) - PRC
	4239 021 19340	Dosing assembly (extra steam) - Taiwan
2	4239 020 90560	Pump
3	4239 026 14320	Spray knob
4	4239 015 35810	Inlay (spray feature) - PRC
	4239 015 36210	Inlay (spray feature) - Taiwan
5	4239 000 06800	Cord set - PRC
	4239 000 07150	Cord set - Taiwan
6	4239 026 14310	Swivel
7	4239 021 17370	Dial - PRC
	4239 021 19100	Dial - Taiwan
8	4239 014 53790	Rattle spring
9	4239 026 00880	Pilot light cover
10	4239 020 92720	Pilot light
11	4239 021 17290	Tank set (spray feature) - PRC
	4239 021 19330	Tank set (spray feature) - Taiwan
12	4239 026 00850	Cover
13	4239 015 70150	Isolation stud
14	4239 026 12360	Thermostat bush
15	4239 021 19300	Soleplate assembly (120V)
	4239 021 17230	Soleplate assembly (230V)
16	4239 015 52140	Cover seal
17	4239 015 54210	Tank top seal
18	4239 020 94040	ASO module (120V)
	4239 020 94030	ASO module (230V)

**REPAIR INSTRUCTIONS**

- In case of any defect in the thermostat, the complete soleplate has to be replaced.
- No information about the type number and voltage has been stamped into the type plate spare part. When replacing the type plate, engrave at least type number and voltage into the type plate with a tool.

