

Service
Service
Service



Philips Domestic Appliances and Personal Care

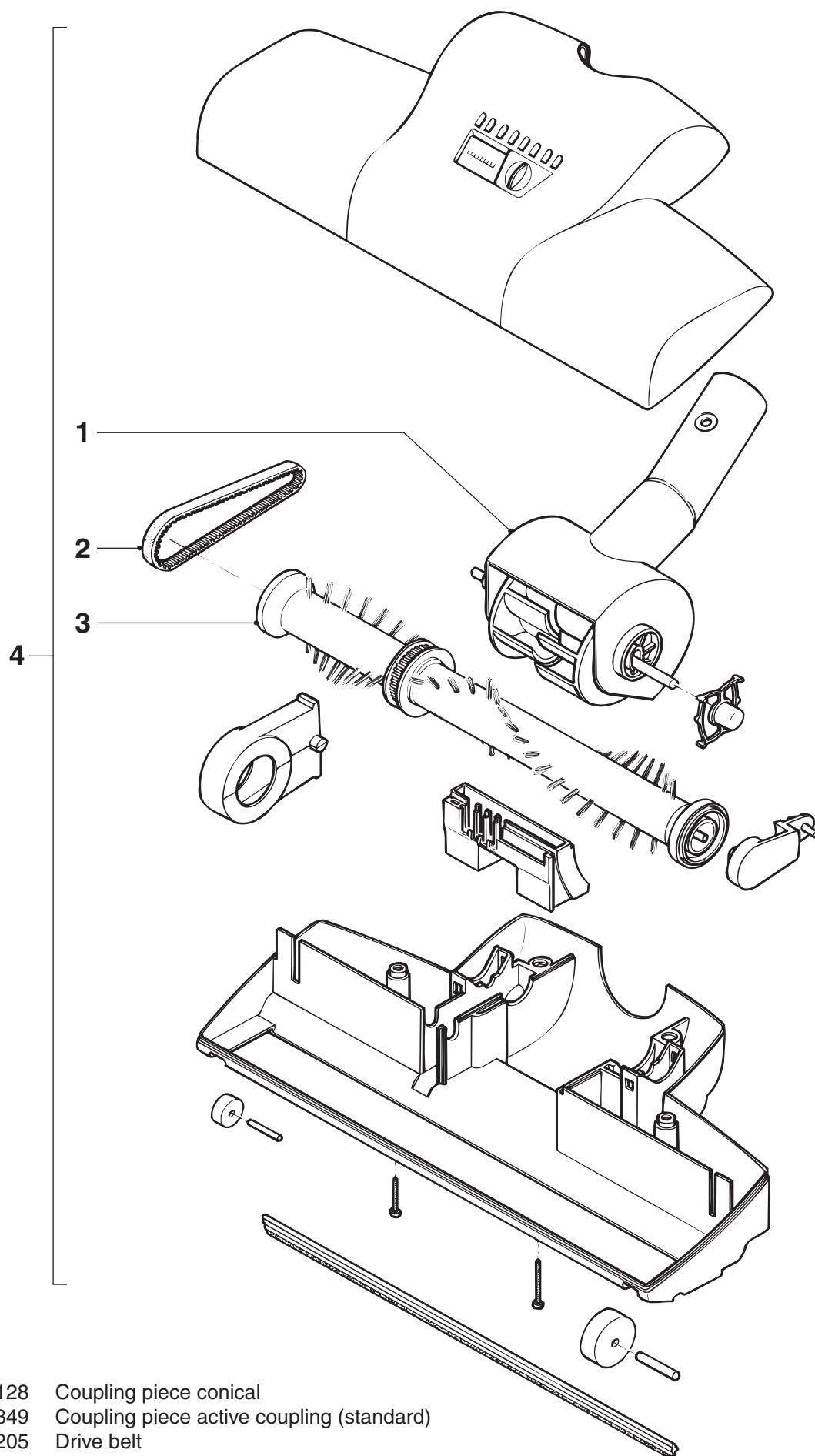
Service Manual

This nozzle driven by air, can be used for all vacuum cleaners.
For spare parts see reverse side of this sheet.

This product meets the requirements regarding interference suppression on radio and TV.

After the product has been repaired, it should function properly and has to meet the safety requirements as officially laid down at this moment.

FC 8043



- | | | |
|---|----------------|---|
| 1 | 4822 528 11128 | Coupling piece conical |
| | 9965 000 03349 | Coupling piece active coupling (standard) |
| 2 | 4822 358 10205 | Drive belt |
| 3 | 4822 479 20201 | Brush assy |
| 4 | 4822 479 20196 | Turbo nozzle complete (conical coupling) |
| | 4322 004 22960 | Turbo nozzle complete (standard coupling and park ass.) |