

Service
Service
Service



Philips Domestic Appliances and Personal Care

Service Manual

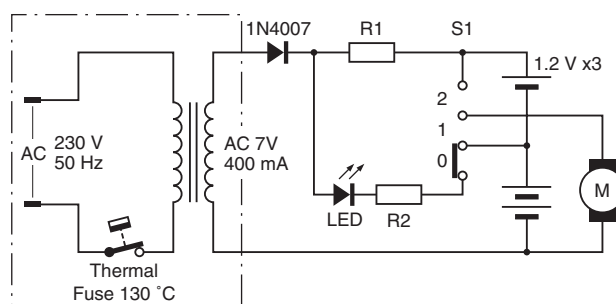
PRODUCT INFORMATION

Rechargeable batteries	: 3 x 1.2V
Transformer AC / AC	: 230 V / 7 V AC - 400 mA
Charge indicator	: LED
Dust capacity	: 0.3 Liter
Switch positions	: 0 - 1 - 2
Weight	: 0.75 kg
Dimensions	: 16.7 x 40.4 x 11.2 cm
Cord length	: 1.8 m
Air flow	: 0.48 m ³ / minute

SERVICE INFORMATION

- The dust container and wall holder are all interchangeable for all versions, only with color difference.
- Washable permanent filter is available under type number FC 8035 (8838 035 01010).
- The rechargeable batteries contained substances, which may pollute the environment. Dispose unused cells at especially assigned places.
- If a repair has been executed, ensure that all the functions of the appliance are working correctly.
- Operating time is defined as the time it takes to discharge 50 % of the nominal capacity of the batteries.

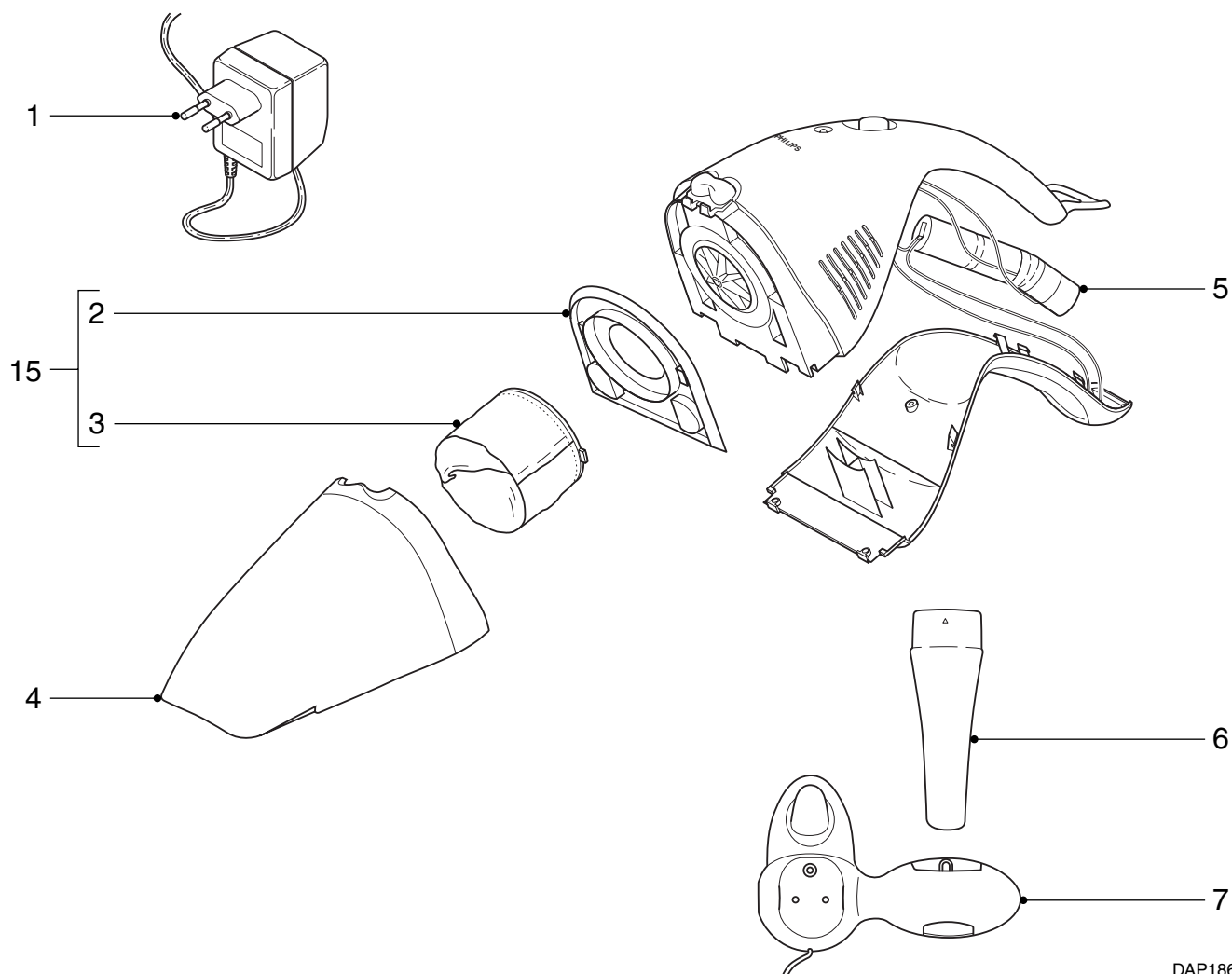
	Battery type	Colour setting	Operation time (fully charged)
FC 6064/01	NiCd 3 x 1600 mA	Ivory / Pearl blue	> 8 minutes
FC 6064/02	NiMH 3 x 2200 mA	Ivory / Pearl blue	> 11 minutes



This product meets the requirements regarding interference suppression on radio and TV.

After the product has been repaired, it should function properly and has to meet the safety requirements as officially laid down at this moment.

FC 6064



DAP1864

Item	Description	Service
1	Adapter - EU	9965 000 06425
	Adapter - UK	9965 000 06426
	Adapter - Taiwan	9965 000 06427
	Adapter - Korea	9965 000 06428
2	Filter holder assy	9965 000 10792
3	Filter dry	9965 000 10791
4	Dust container	9965 000 04825
5	Battery	NiCd 9965 000 11452
	Battery	NiMH Not available
6	Crevice tool	9965 000 10793
7	Wall holder	9965 000 04828
15	Filter assy	9965 000 13457
	Dry filter set (2 pcs)	8838 035 01010