

MDR-V700DJ

SERVICE MANUAL

Ver. 1.2 2007.11

US Model
Canadian Model
AEP Model
E Model



SPECIFICATIONS

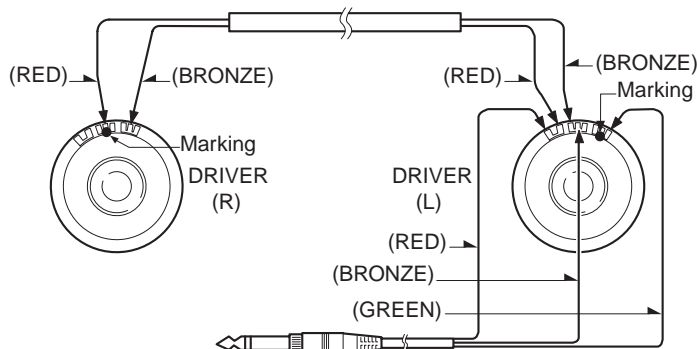
Type	: Closed, dynamic
Driver unites	: 50 mm, dome type
Impedence	: 24 Ω at 1 kHz
Sensitivity	: 107 dB/mW
Power handling capacity	: 3,000 mW
Frequency response	: 5 – 30,000 Hz
Cord	: Coiled 1 – 3 m long single-sided OFC litz cord with a gold plated stereo unimatch plug
Mass	: Approx. 300 g (10 ⁹ /16oz.) without cord
Supplied accessory	: Carrying pouch (1)

Design and specifications are subject to change without notice.

Features

- Monitoring headphones for DJ and remix use
- Swivel earcup with automatic position recovery mechanism allows easy single sided monitoring on shoulders
- Resists high power audio input up to 3W
- 50 mm driver unit for high quality sound
- Neodymium magnet for powerful bass and clear treble sound
- Coiled OFC litz cord for high conductivity
- Screw type gold plated stereo unimatch plug for secure connection
- Convenient folding design

[WIRING DIAGRAM]



ACCESSORIES

Ref. No.	Part No.	Description	Remarks
		ACCESSORIES	

	4-218-130-12	CASE, SOFT	
	2-891-181-12	MANUAL, INSTRUCTION(US) (ENGLISH/SPANISH)	
	3-866-560-11	MANUAL, INSTRUCTION(EXCEPT US) (ENGLISH/FRENCH/GERMAN/SPANISH/ ITALIAN/PORTUGUESE/RUSSIAN)	

9-926-946-13
2007K16-1
© 2007.11

Sony Corporation
Audio Business Group
Published by Sony Techno Create Corporation

STEREO HEADPHONES

SONY®

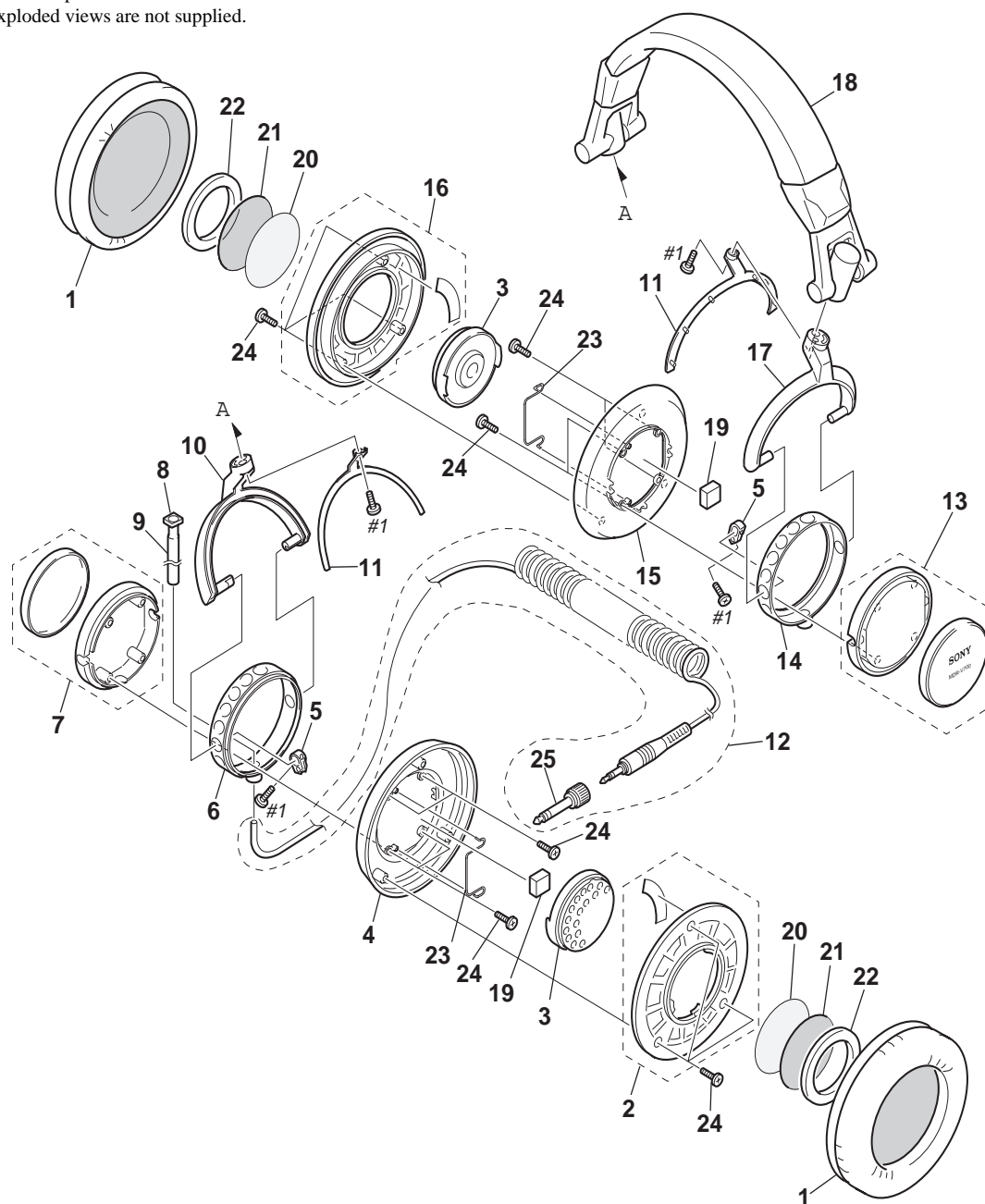
MDR-V700DJ

Ver. 1.2

EXPLODED VIEW

NOTE:

- -XX, -X mean standardized parts, so they may have some differences from the original one.
- The mechanical parts with no reference number in the exploded views are not supplied.



Ref. No.	Part No.	Description	Remarks	Ref. No.	Part No.	Description	Remarks
1	4-218-140-01	PAD, EAR		14	4-218-136-01	RING, HOUSING (R)	
2	X-4951-694-1	PLATE (L) ASSY, FRONT		15	X-4951-697-1	FLANGE (R) ASSY	
3	1-542-390-11	DRIVER (HEADPHONE) (050F025)		16	X-4951-695-1	PLATE (R) ASSY, FRONT	
4	X-4951-696-1	FLANGE (L) ASSY		17	4-218-142-01	HANGER (R)	
5	4-954-017-01	CAM, HANGER		18	X-4951-652-1	BAND ASSY, HEAD	
6	4-218-135-01	RING, HOUSING (L)		19	4-220-391-01	ABSORBENT, ACOUSTIC	
7	X-4951-698-1	HOUSING (L) ASSY		20	4-220-392-01	EQUALIZER	
* 8	3-671-893-00	CLAMP (LOW TYPE)		21	4-219-368-01	URETHANE, FRONT	
9	4-218-139-01	BUSHING		22	4-219-367-01	RING, URETHANE	
10	4-218-141-01	HANGER (L)		23	4-219-791-01	SPRING, HANGER	
11	4-218-143-01	LID, HANGER		24	3-255-448-01	SCREW (2.6 × 5), TAPPING	
12	1-790-644-12	CORD (WITH PLUG)		25	1-506-589-11	PLUG, ADAPTOR (6.3mm)	
13	X-4951-699-1	HOUSING (R) ASSY		#1	7-685-103-14	SCREW +P 2 × 5 TYPE2 NON-SLIT	

MEMO

REVISION HISTORY

Clicking the version allows you to jump to the revised page.

Also, clicking the version at the top of the revised page allows you to jump to the next revised page.

[illegible]