

# MDR-V6

## SERVICE MANUAL

Ver. 1.2 2007.07



US Model  
Canadian Model  
AEP Model  
UK Model  
E Model

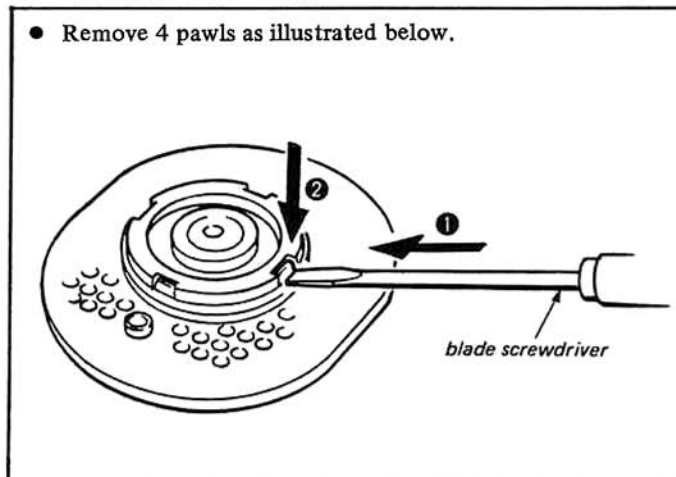
### SPECIFICATIONS

Type	Circum-aural, closed
Driver units	40 mm dia., dynamic type
Impedance	63 ohms at 1 kHz
Sensitivity	106 dB/mW
Rated power	0.5 W
Power handling capacity	1 W
Frequency response	5–30,000 Hz
Cord	3 m (extended length) coiled cord with a stereo unimatch plug
Weight	Approx. 230 g (without cord)

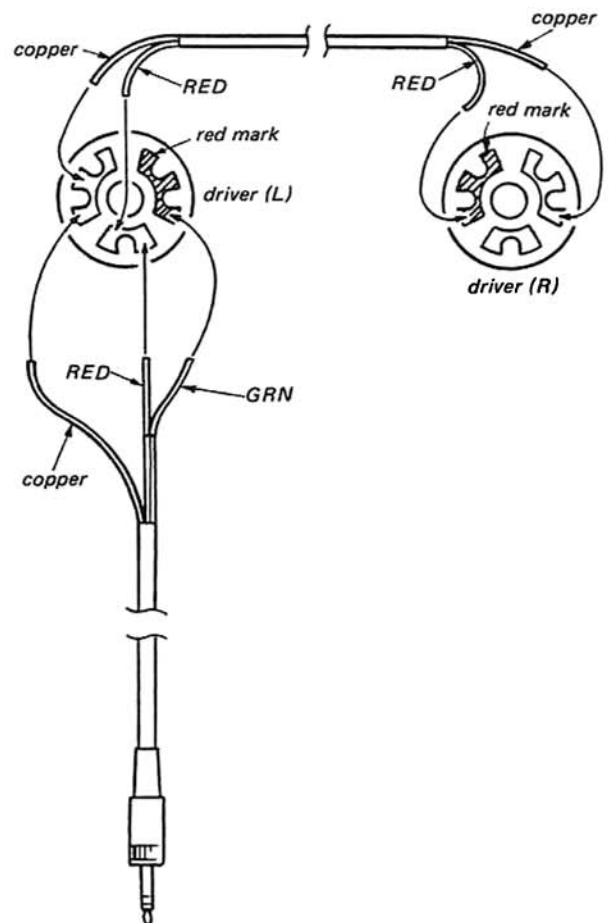
### 1. DISASSEMBLY

**Note:** Follow the disassembly procedure in the numerical order given.

- Remove 4 pawls as illustrated below.



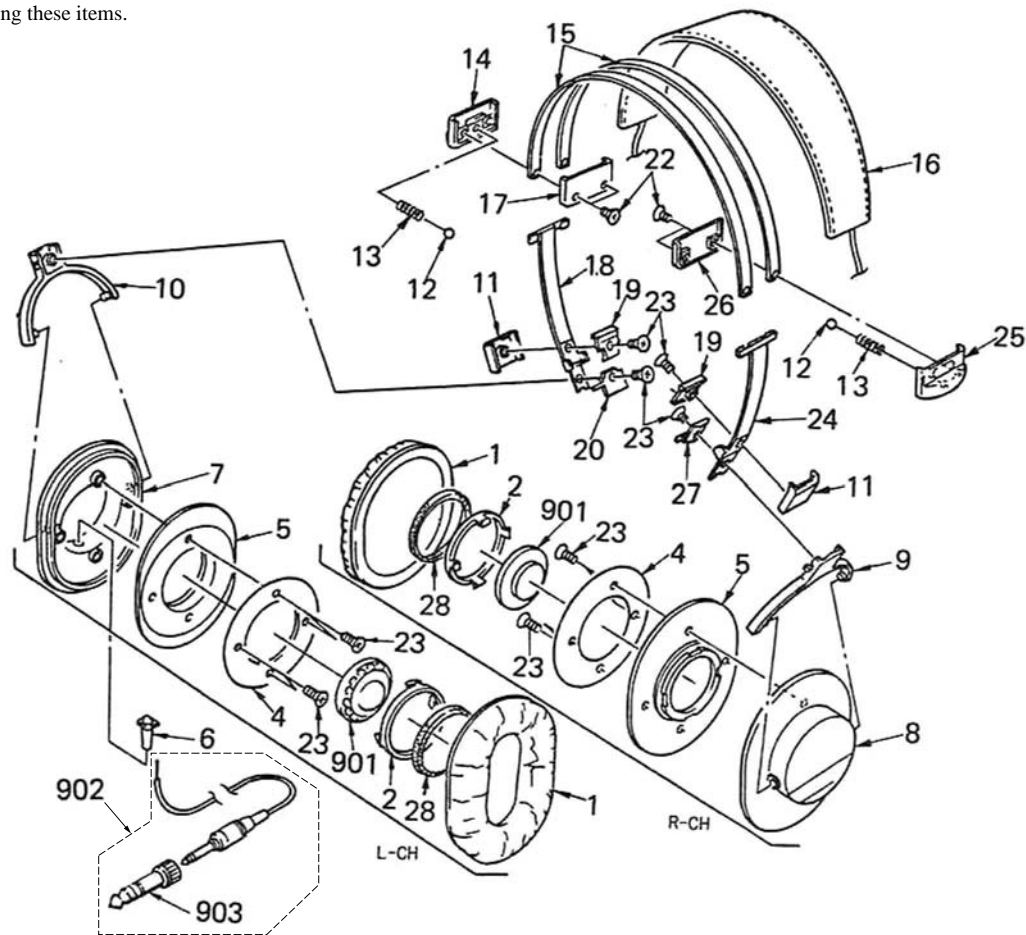
### 2. MOUNTING DIAGRAM



STEREO HEADPHONES

3. EXPLODED VIEW AND PARTS LIST

NOTE:  
Items marked “\*” are not stocked since they are seldom required for routine service. Some delay should be anticipated when ordering these items.



Ref. No.	Part No.	Description	Remarks
1	2-115-668-03	PAD, EAR	
2	2-113-129-01	STOPPER, DRIVER	
* 4	2-113-152-02	REGISTER, FRONT	
* 5	2-113-140-01	PLATE, FRONT	
6	2-113-137-01	BUSHING	
7	X-2113-114-1	HOUSING (LEFT) ASSY	
8	X-2113-113-1	HOUSING (RIGHT) ASSY	
9	2-113-133-11	HANGER (RIGHT)	
10	2-113-132-11	HANGER (LEFT)	
11	2-113-134-11	CASE, HINGE	
12	7-671-113-01	STEEL, BALL 3	
13	2-113-146-01	SPRING, COMPRESSION	
14	X-2113-116-1	CASE (LEFT) ASSY, CLICK	
* 15	2-113-122-01	BAND, HEAD	
16	X-2113-112-1	CUSHION ASSY, HEAD	
* 17	2-113-124-11	LID (LEFT), CLICK CASE	
18	X-2113-101-1	SLIDER (LEFT) ASSY	
* 19	2-113-123-11	LID, HINGE CASE	

Ref. No.	Part No.	Description	Remarks
20	2-113-130-11	LID (LEFT), HANGER	
22	7-685-235-29	SCREW +KTP 2.6X10 TYPE2NON-SLIT	
23	7-685-232-19	SCREW +KTP 2.6X5 TYPE2NON-SLIT	
24	X-2113-102-1	SLIDER (RIGHT) ASSY	
25	X-2113-115-1	CASE (RIGHT) ASSY, CLICK	
* 26	2-113-125-11	LID (RIGHT), CLICK CASE	
27	2-113-131-11	LID (RIGHT), HANGER	
28	2-113-149-01	RING, URETHANE	
901	1-542-491-11	DRIVER (040F001P)	
902	1-580-792-12	CORD (WITH PLUG) (with PLUG ADAPTOR)	
903	1-506-589-11	ADAPTOR, PLUG	

ACCESSORIES  
\*\*\*\*\*  
2-113-147-11 CASE, SOFT  
3-765-010-21 MANUAL, INSTRUCTION  
(ENGLISH, FRENCH, SPANISH, GERMAN)

MEMO

## REVISION HISTORY

Clicking the version allows you to jump to the revised page.

Also, clicking the version at the top of the revised page allows you to jump to the next revised page.

[illegible]