

Service
Service
Service



Domestic Appliances and Personal Care

Service Manual

SAP Coding HQ 304

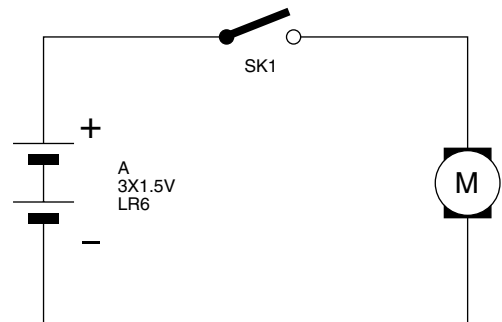
HINTS FOR REPAIRS

DISASSEMBLY

- Remove the shaving unit, to prevent damages during repairs.
- Remove the batterieholder.
- Unlock the snaplocks from the tailpart.
- Lift the motor unit out of the housing.
- Loosen the motor clamp springs on the bearing block of the motor with a small screwdriver.
- Unlock the peg-clamping 'Z' (2X) between frame (item 8) and hair chamber (item 5).
- To remove the trimmer, first disassemble the trimmer slide by pushing down the locking pegs 'V' (2X) and move slide slightly outwards.
- Make room between trimmer and cover with a small screwdriver, to release the peg fastening 'Y'.

ASSEMBLY

- The assembly must be carried out in the reverse order of what is described under Disassembly.
- When fitting the shaver it must be checked if wiring is correctly positioned.



TECHNICAL DATA

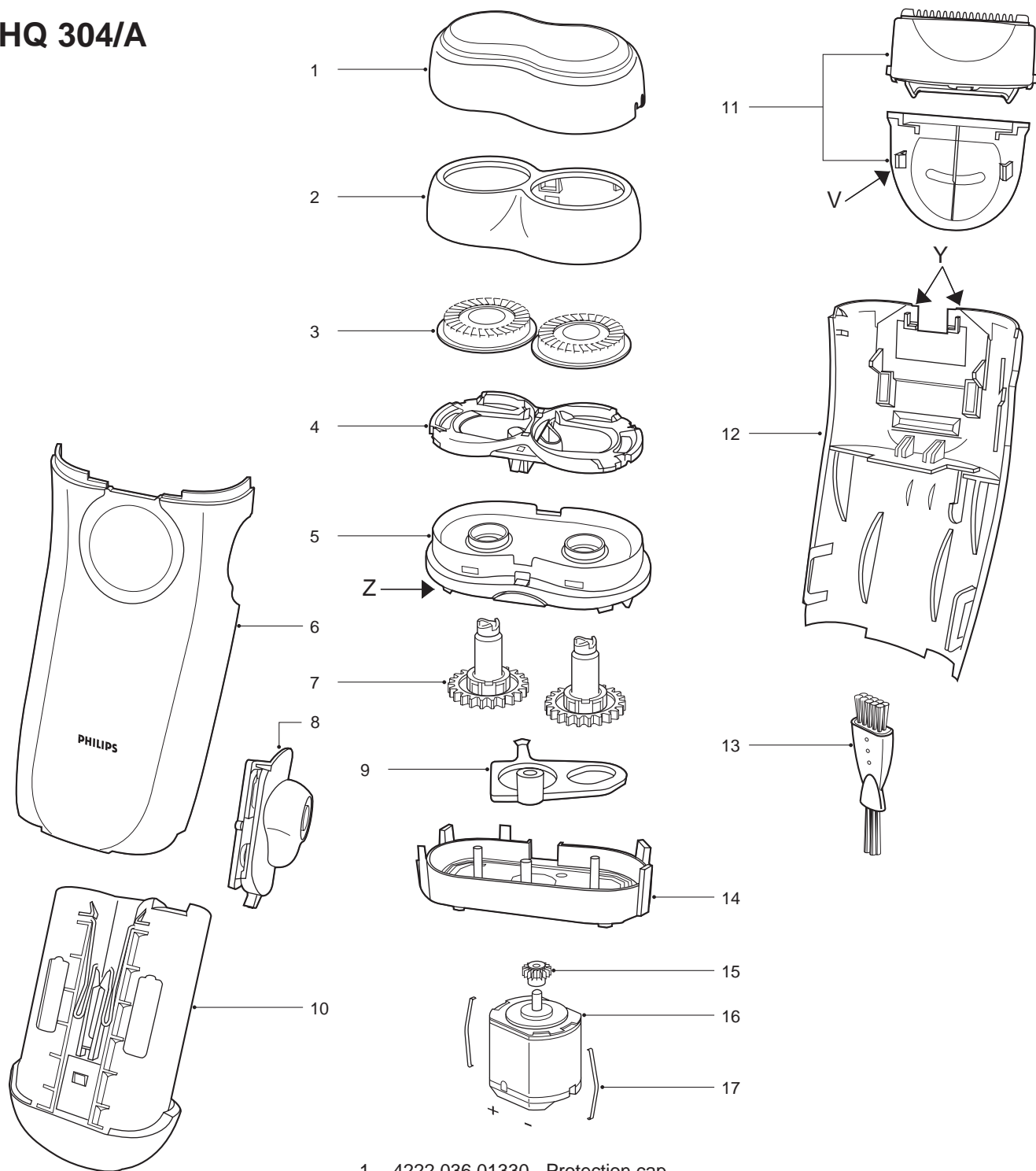
Operating voltage	: 4.5V \equiv
Power supply	: 3X AA/LR6 battery
Shaving heads	: 2X HQ3
Comfort control	: fixed setting
Trimmer	: pop-up system

PRODUCTS MEETS THE REQUIREMENTS REGARDING INTERFERENCE SUPPRESSION ON RADIO AND TELEVISION.

- AFTER THE PRODUCT HAS BEEN REPAIRED IT SHOULD FUNCTION PROPERLY AND HAS TO MEET THE SAFETY REQUIREMENTS AS LAID DOWN OFFICIALLY ESTABLISHED AT THIS MOMENT.



HQ 304/A



- | | | |
|----|----------------|------------------|
| 1 | 4222 036 01330 | Protection cap |
| 2 | 4222 036 01340 | Head housing |
| 3 | 4822 690 30471 | HQ3 shaving head |
| 4 | 4222 036 02780 | Head holder |
| 5 | 4222 036 01360 | Hairchamber |
| 6 | 4222 036 01890 | Housing |
| 7 | 4222 036 01790 | Gearwheel |
| 8 | 4222 036 01810 | On/off knob |
| 9 | 4222 036 01380 | Lever |
| 10 | 4222 036 01900 | Battery holder |
| 11 | 4222 036 01390 | Trimmer |
| 12 | 4222 036 01910 | Cover |
| 13 | 4222 036 02770 | Cleaning brush |
| 14 | 4822 464 30194 | Frame |
| 15 | 4822 522 33039 | Pinion |
| 16 | 4222 036 01800 | Motor 4.5V |
| 17 | 4822 492 63165 | Motor clamp |
| | 4222 036 03050 | Pouch |