

Philips Domestic Appliances and Personal Care

Service manual 4822 729 21803 herewith cancels

Service Manual

PRODUCT INFORMATION

Features	HI 170	HI 172	HI 178
Detachable tank	x	x	x
Spray	x	x	x
Steam positions (incl 0)	3	3	3
Self clean	x	x	x
Pilot light	x	x	x
Automatic shut-off	-	-	x
Integrated cord winder	x	x	x
Length cord set 2.0 m	x	x	x
Sole plate finished	x	-	-
Sole plate coated	-	x	x

Voltage / frequency : 220 V , 50 - 60 Hz
: 220 - 240 V , 50 - 60 Hz
: 110 - 127 V , 50 - 60 Hz

Power consumption : 1000 Watts

Product meets the requirements regarding interference suppression on radio and TV.

Auto shut-off :

A relay in the electronic module interrupts the power to the heating element when the iron is motionless in :

- horizontal position for 30 seconds
- vertical position for 8 minutes

When the iron is moved again, normal function continues.

N.B. In order to allow the iron to heat up in horizontal position, the iron switches off after plugging in for once after 2 minutes.

DIASSEMBLY ADVICE

PILOT LIGHT 6

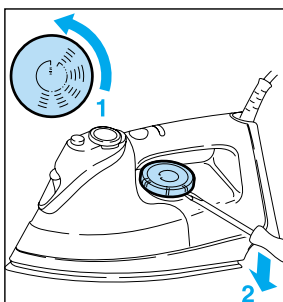
PCB 7

CORD SET 8

SWIVEL 9

remove **SCREW A**
remove **BACK PLATE 5**

DIAL 10



COVER 14

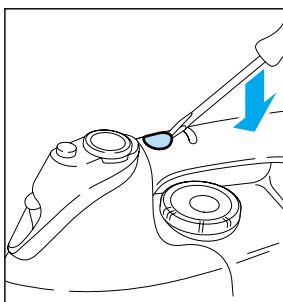
THERMOSTAT 15

SOLE PLATE 17

DOSING SEAL 18

remove **TANK 1**
remove **SCREW A**
remove **BACK PLATE 5**
remove **SCREWS CORD SET/LAMP/PCB**
remove **DIAL 10**
remove **SCREW B 4x**
remove **HANDLE 12**
remove **SCREW D 2x**
remove **SCREW C 1x**
remove **COVER 14**

SET RELEASE BUTTON 13



PARTS LIST HI 170 / HI 172 / HI 178

POS.	DESCRIPTION	CONSISTING OF	SERVICE CODE
1	Tank	item 1 and 2	4822 418 10443
2	Tank top seal		4822 532 13162
4	Steam control unit		4822 410 11135
5	Back plate		4822 442 00915
6	Pilot lamp 100 - 240 V. HI 170/HI 172		4822 134 41228
7	PCB 110 - 127 V. HI 178 PCB 220 - 240 V. HI 178		4822 214 12294 4822 214 12293
8	Cord set Euro plug Cord set UK plug Cord set UL plug Cord set China plug		4822 321 10951 4822 321 10952 4822 321 10947 4822 321 11317
9	Swivel		4822 325 50217
10	Dial		4822 410 11134
11	Rattle spring		4822 492 32876
12	Handle + lamp covers HI 170, HI 172	items 12 + 106	4822 498 10646
	Handle + lamp covers HI 178	items 12 + 105	4822 498 10645
13	Set release button/slider	items 107,108,109	4822 310 10964
14	Cover		4822 442 00916
15	Thermostat HI 170, HI 172	items 15,112 and 16	4822 282 10313
	Thermostat HI 178	items 15,112 and 16	4822 282 10314
16	Pin		4822 535 10469
17	Sole plate 110 - 127 V		4822 259 20426
	Sole plate 220 - 240 V		4822 259 10094
18	Dosing seal		4822 532 12799

NOTES:

1) For standardisation reasons:

- * only the coated sole plate will be supplied.
- * only cordsets with a length of 2.6 m will be supplied.
- The colour of the cordset may differ from the original colour.
- * no info about type number and voltage has been stamped onto the backplate.
- When replacing the back plate, engrave at least type number and voltage into the back plate with a sharp object.

2) Parts, with numbers from 100 and higher, cannot be ordered separately.

3) After the product has been repaired, it should function properly and has to meet the safety requirements and legal regulations as laid down and officially established at this moment.

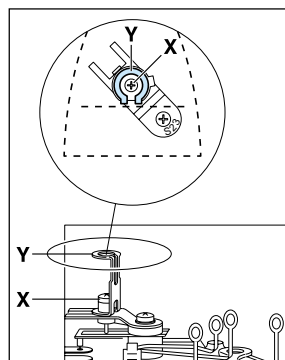


Fig. 1

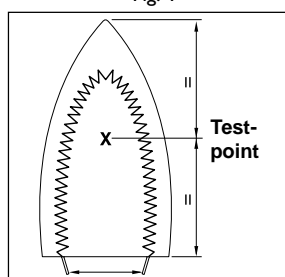


Fig. 2

ADJUSTMENT AND CONTROLS

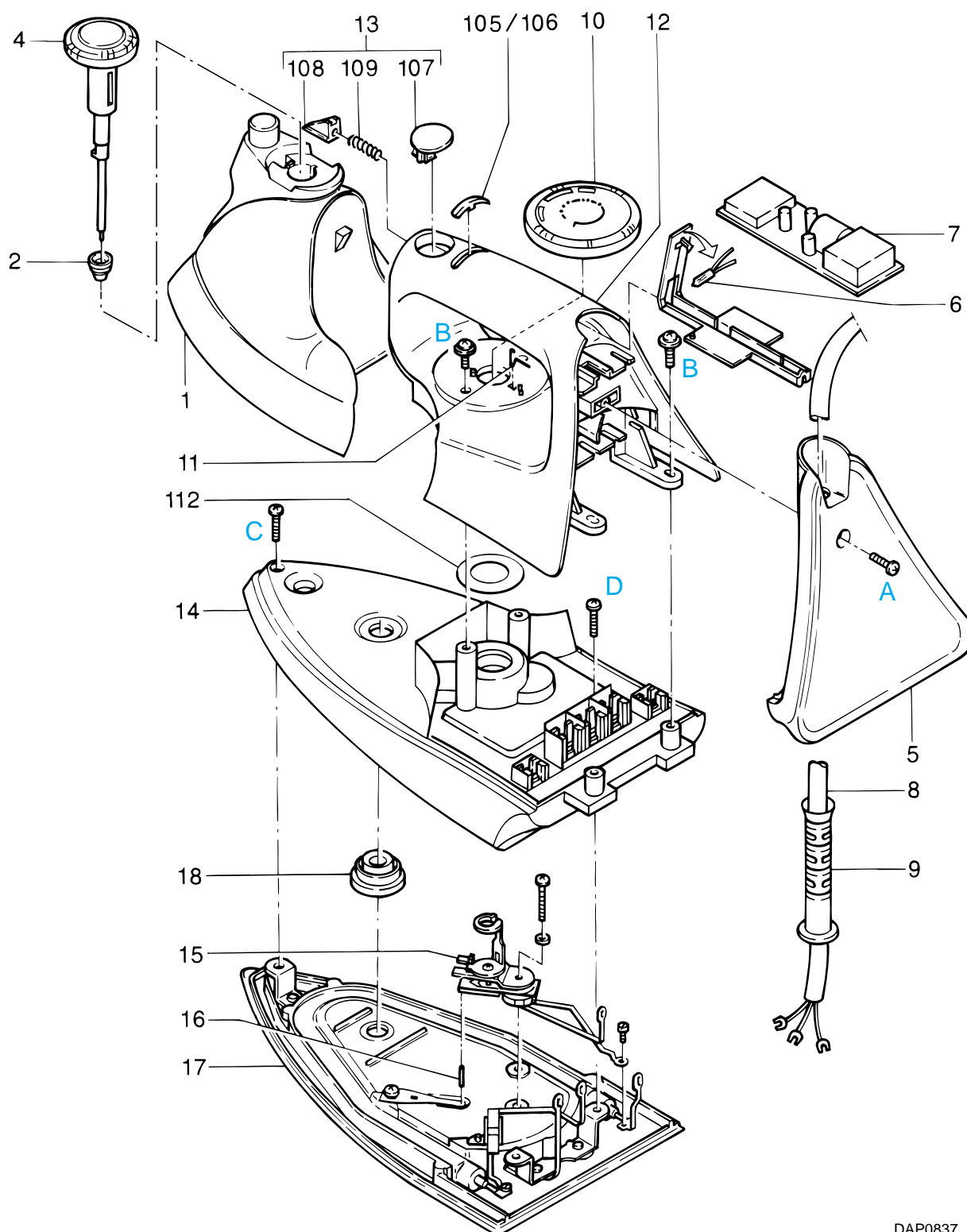
Introduction :

The sole plate (17) is supplied without thermostat (15).
After assembling the thermostat (15), the thermostat must be adjusted.

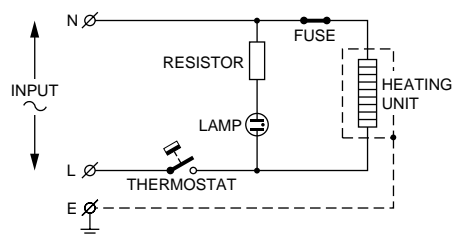
Adjusting procedure

Connect the connecting strips to an Ohm meter.
Set the bracket (Y) in position as shown in fig. 1
Turn the adjusting screw (X) clockwise or anti-clockwise until the Ohm meter indicates " 0 " and the contacts have only just been closed. You hear a " click ".
By turning bracket (Y) freely, check if the thermostat switches when the bracket is in the position of fig. 1.
Secure the adjusting screw with glue (loctite).
After adjusting the thermostat, always check the temperature of the sole plate, with the dial set in MAX. position. ($210 \pm 25^{\circ}\text{C}$).
For location of the test point, see fig 2.
The temperature must be measured, when the iron has been connected to the mains for at least 15 min.
The max. temperature shall not be higher than 235°C

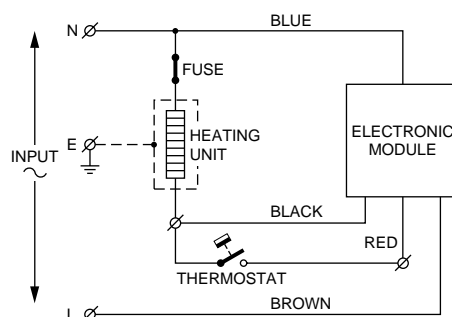
EXPLODED VIEW HI 170 / HI 172 / HI 178



DAP0837



HI 170, HI 172



HI 178

Screws : d x l in mm

- A 1 x : 6.0 x 13
B 4 x : 3.5 x 13
C 1 x : M4.0 x 10
D 2 x : M4.0 x 8