

Service
Service
Service



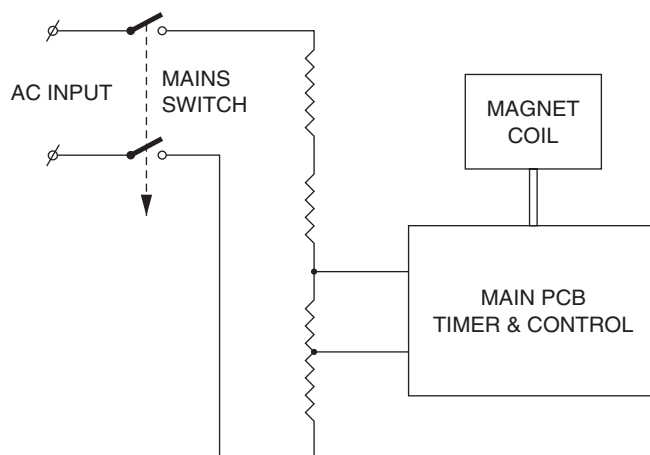
Philips Domestic Appliances and Personal Care

Service Manual

SAP coding HD 2601

PRODUCT INFORMATION

Voltage	: 220 - 240 V
Frequency	: 50 - 60 Hz
Power consumption	: 800 W
Coloursetting	: Chromium and Anthracite



SERVICE INFORMATION

To open the appliance, first remove the 4 rubber feet Item (11).

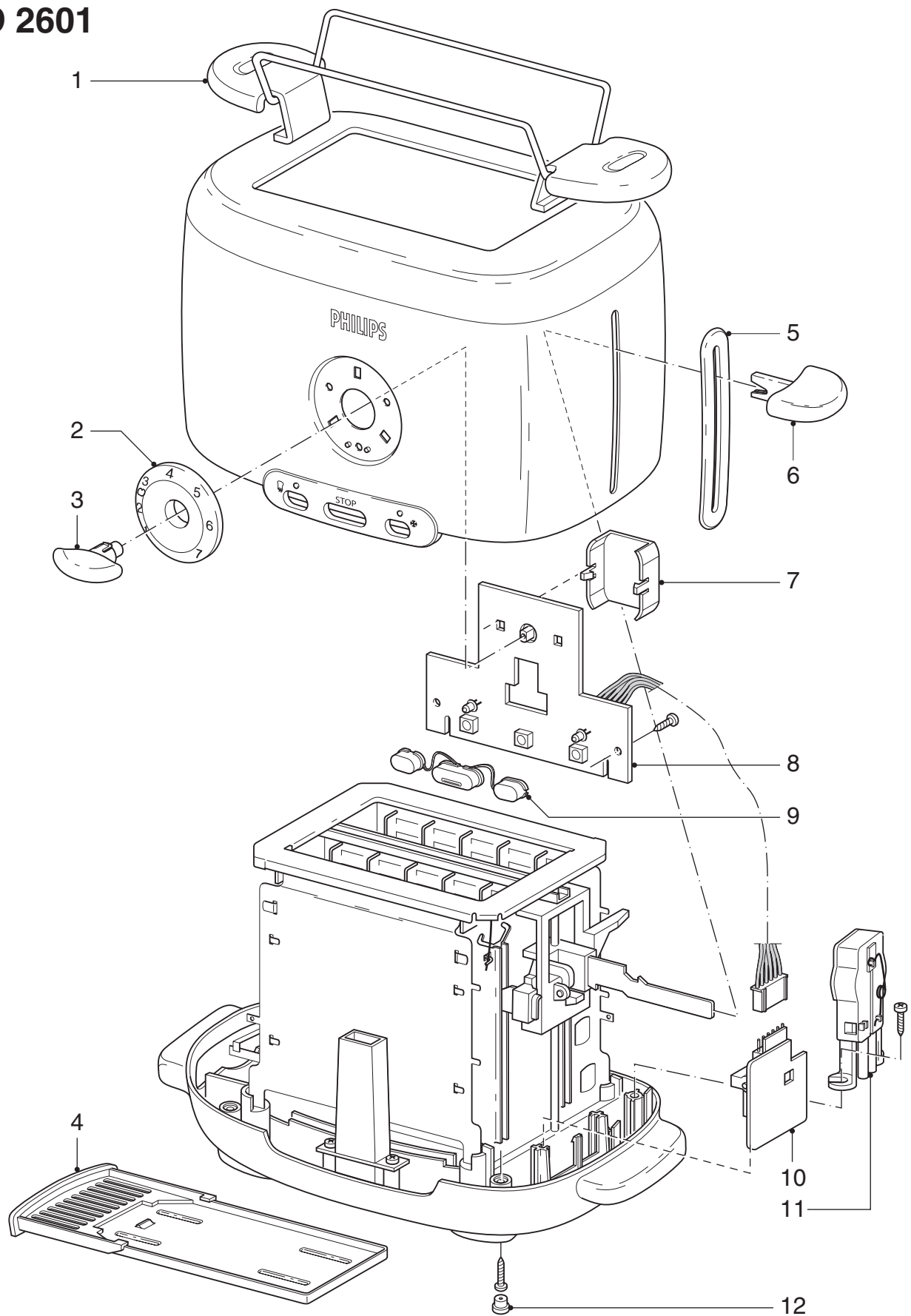
After the rubber feet has been removed, a special screwdriver is needed.

The code number to order this special screwdriver is: 9965 000 15315

This product meets the requirements regarding interference suppression on radio and TV.

After the product has been repaired, it should function properly and has to meet the safety requirements as officially laid down at this moment.

HD 2601



Pos	Description		Service code
1	Bunwarmer	Anthracite	9965 000 14813
2	Control knob cover	Anthracite	9965 000 14802
3	Control knob	Anthracite	9965 000 14803
4	Crumtray complete	Anthracite	9965 000 14804
5	Push slot	Anthracite	9965 000 14805
6	Push knob	Anthracite	9965 000 14806

Pos	Description		Service code
7	PCB cover		9965 000 14807
8	Function PCB assembly		9965 000 14808
9	Future button (3x)	Anthracite	9965 000 14809
10	Main PCB (Magnet unit)		9965 000 14810
11	Mains switch assy		9965 000 14811
12	Rubber foot	White	9965 000 14812