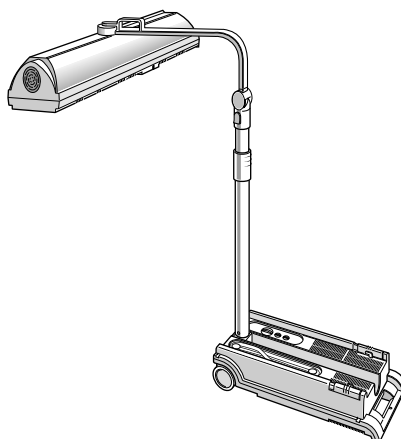
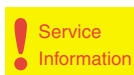
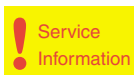


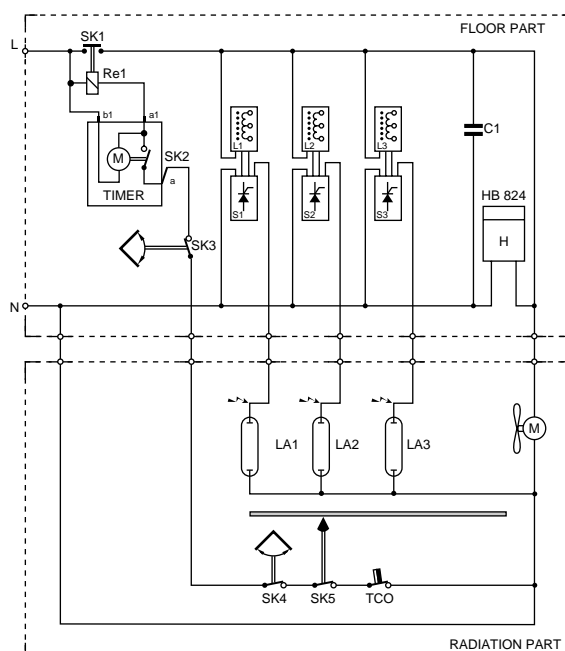
Service
Service
Service

Domestic Appliances and Personal Care

Service Manual

TECHNICAL DATA

Input consumption	: 1200W / 230V
UV-A source	: 3x HPA400 / 118 mm
Ballast	: 3x BHA 400L / 230V
Starter	: 3x SN 58-spec.
Timer	: 60 mins motor driven
Hours counter HB 824	: electro mechanical
Radiation area	: 185 x 75 cm
Protecting goggles	: HB072 ² 4822 690 80147
Output (minimum)	: mW/cm ² at 65 cm
LMV meter	: 4.6
HEBRU meter	: 2.4
Production code YYWW	: on type plate



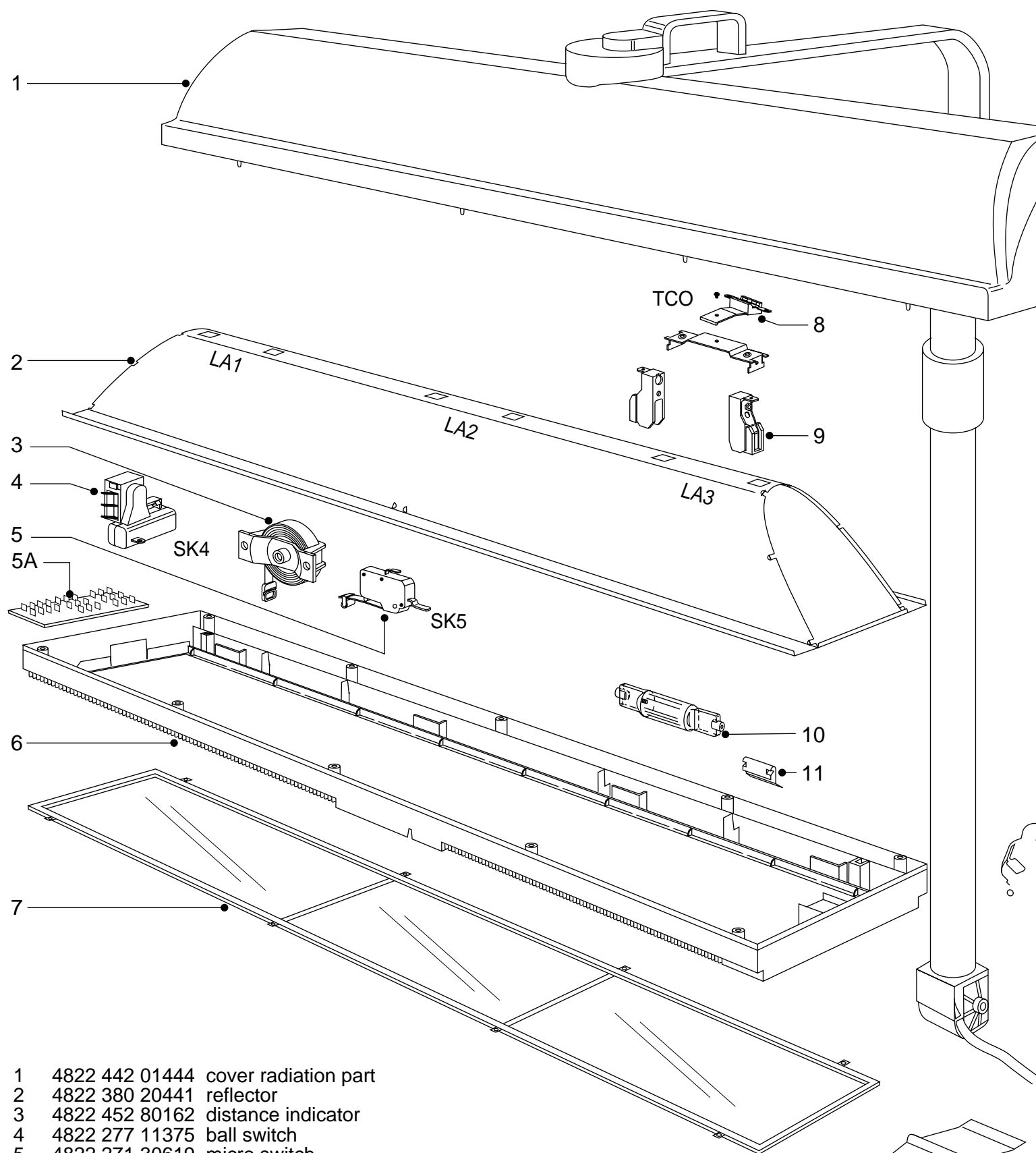
IMPORTANT

- On account of the short high starting current, the house fuse should be of a 16A-delayed type.
- The appliance will work in operating position only.
- Always check if the protecting glass pane (item 7) is fitted after a repair.
- HPA-lamps only start when they have cooled down sufficiently.
- Never touch a HPA-lamp with your fingers. If necessary, clean the lamp with alcohol.
- Colour differences may occur when new lamps are installed. This phenomenon is characteristic of HPA-lamps and disappears after a short period of use.
- After assembly the glass filter should be free from finger prints and dust. Clean the glass filter with alcohol, if necessary.
- Never look in the direction of the radiation part while the lamps are on without wearing protecting goggles.
- In case of insufficient cooling (e.g. when the ventilation apertures are blocked or when the fan is defective) the safety device (item 8) will automatically switch off the solarium. Once the cause of overheating has been removed and the solarium has cooled down sufficiently, the appliance will switch on again automatically.
- When the appliance is a few years old, we advise you to apply a drop of thin oil to the bearings of the fan.
- Let the solarium cool down first (approx. 15 mins) before closing and storing it away.
- Only move the solarium when folded.
- In case of complaints about little or no tanning, the output can be measured by means of a so-called LMV- or HEBRU-meter. The figures given on the title sheet are the minimum values to be measured in the centre of the radiation field after 5 mins of warming up and with the appliance connected to the rated voltage.

HINTS FOR REPAIRS

- If the lift mechanism is defective or the wiring between floor part and radiation part is interrupted, you should contact a Philips Service Centre (repair is not possible).
- The above also applies when the housing (item 1) has to be replaced.
- Disassembly of the radiation part:
 1. Remove the 10 screws with which the cover (item 6) is fastened to the housing (item 1). The cover will continue to cling to the housing.
 2. Disconnect the connectors of the connecting cable and motor.
 3. Undo the other connections.
- It can be established whether lamps, ballasts or starters are defective by interchanging them.
- When replacing a lamp holder (item 9) 2 tubular rivets must be drilled out. The bracket is fastened with 2 M2.5x10 bolts.
- Disassembly of the floor part:
 1. Remove 6 square and 3 round ornamental props (item 16).
 2. Loosen 14 visible screws by which the cover (item 15) is fastened.
 3. Pass the mains cord cover (item 23A) and the timer cover (item 13A) through the opening below, after the screws have been taken out.
 4. Loosen the screw under the timer cover.
 5. Remove the cover (item 15) in horizontal position so that the screws will not fall out. (As screws with varying length are used, it is not possible to interchange them.)
- The wheel can be replaced after the decorative cap has been removed by means of a small screwdriver.

HB 821/A HB 824/A



- | | | |
|----|----------------|------------------------|
| 1 | 4822 442 01444 | cover radiation part |
| 2 | 4822 380 20441 | reflector |
| 3 | 4822 452 80162 | distance indicator |
| 4 | 4822 277 11375 | ball switch |
| 5 | 4822 271 30619 | micro switch |
| 5A | 4822 267 10902 | PCB connector |
| 6 | 4822 441 12207 | housing radiation part |
| 7 | 4822 466 62573 | glasspane |
| 8 | 4822 252 20325 | cut-out |
| 9 | 4822 325 20102 | lamp holder |

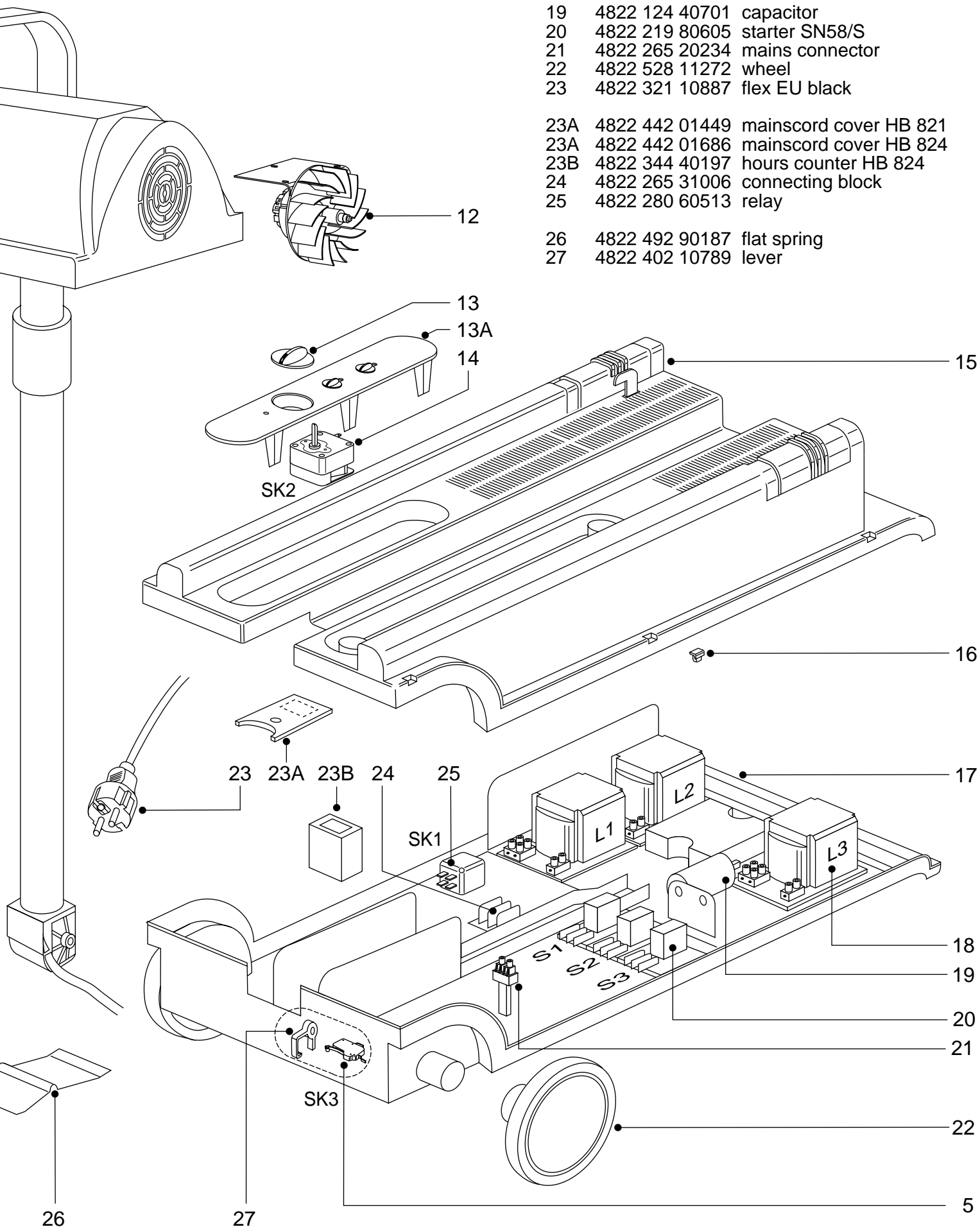
10 4822 134 30032 HPA400W lamp
 11 4822 492 90188 reflector clamp
 12 4822 361 21555 motor with fan
 13 4822 413 51453 timer knob
 13A 4822 442 01445 timer cover

14 4822 349 40068 timer 60 minutes
 15 4822 442 01443 cover floorpart
 16 4822 462 11095 set of ornament props
 17 4822 441 12206 housing floorpart
 18 4822 142 60417 ballast 220-240V

19 4822 124 40701 capacitor
 20 4822 219 80605 starter SN58/S
 21 4822 265 20234 mains connector
 22 4822 528 11272 wheel
 23 4822 321 10887 flex EU black

23A 4822 442 01449 mainscord cover HB 821
 23A 4822 442 01686 mainscord cover HB 824
 23B 4822 344 40197 hours counter HB 824
 24 4822 265 31006 connecting block
 25 4822 280 60513 relay

26 4822 492 90187 flat spring
 27 4822 402 10789 lever



HB 821/A
HB 824/A

