

Service
Service
Service



Philips Domestic Appliances and Personal Care

Service Manual

PRODUCT INFORMATION

Features

- Color White/Purple
- Dynaglide soleplate (Non stick)
- Tank capacity (150 ml)
- Integrated Calc Clean
- Steam rate 15 grams/min
- Extra steam 25 grams/min
- Spray Feature

Safety Information

- This product meets the requirements regarding interference suppression on radio and TV.
- After the product has been repaired, it should function properly and has to meet the safety requirements and legal regulations set by the related countries.

TECHNICAL INFORMATION

Voltage	: 220 ~ 240 V
Frequency	: 50 ~ 60 Hz
Power consumption	: 1200 ~ 1440 W
Dimension (F-box)	: 272 x 107 x 140 mm
Weight (Product)	: 870 grams

Water advice

Suitable for tap water use. However if the tap water in your area is very hard, we advise you to mix it with a equal portion of distilled water or to use distilled water only.

Dynaglide Soleplate

This is a non-stick coating that has property of smooth gliding, high scratch resistant, very easy to clean and durable.

Calc clean

The integrated Calc clean function ensure a longer lifetime using normal tap water by removing the scale out of the steam chamber.

DISASSEMBLY ADVICE

BACKPLATE 3

LAMP ASSY 8

SWIVEL 9

CORDSET 10

INLAY 5

- Remove screw A (1x)
- Remove BACKPLATE 3
- Remove LAMP ASSY 8
- Remove SWIVEL 9
- Remove CORD SET 10
- Remove DOSING ASSY 1
- Remove SPRAY KNOB 4
- Remove screw B (1x)
- Remove INLAY 5
- Remove PUMP ASSY 7

DIAL 2

TANK SET 6

THERMOSTAT BUSH 11

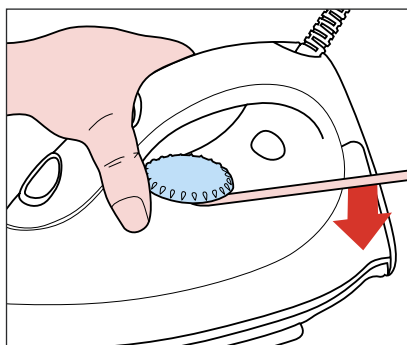
COVER 12

ISOLATION STUD 13

COVER SEAL 14

SOLEPLATE ASSY 16

- Remove DIAL 2



- Remove DOSING ASSY 1
- Remove SPRAY KNOB 4
- Remove screw B (1x)
- Remove INLAY 5
- Remove PUMP ASSY 7
- Remove screw C (3x)
- Remove TANK SET 6
- Remove THERMOSTAT BUSH 11
- Remove screw D (3x)
- Remove COVER 12
- Remove ISOLATION STUD 13
- Remove COVER SEAL 14
- Remove SOLEPLATE ASSY 16

PARTS LIST

GCI121

Pos	Service code	Description
1	4239 021 21250	Dosing assy (with extra steam)
2	4239 021 19740	Dial printed
3	4239 026 14900	Backplate
4	4239 026 14030	Spray knob (purple)
5	4239 026 12110	Inlay (with spray feature)
6	4239 022 54190	Tank set (purple)
7	4239 020 90560	Pump assembly
8	4239 021 14520	Lamp assembly
9	4239 025 96960	Swivel
10	4239 000 06720	Cordset EU
	4239 000 07320	Cordset UK
11	4239 026 12830	Thermostat bush
12	4239 026 12070	Cover
13	4239 015 70150	Isolation stud
14	4239 015 52140	Cover seal
15	4239 015 54210	Tank seal
16	4239 022 53650	Soleplate assembly (230 V)

REPAIR INSTRUCTIONS

- In case of any defect in thermostat, the complete soleplate has to be replaced.
- No information about the type number has been stamped into the type plate. When replacing the type plate, engrave at least type number and voltage onto the type plate with a tool.
- After the product had been repaired, it should function properly and has to meet the safety requirement and legal regulations set by the related country.

