



Philips Domestic Appliances and Personal Care

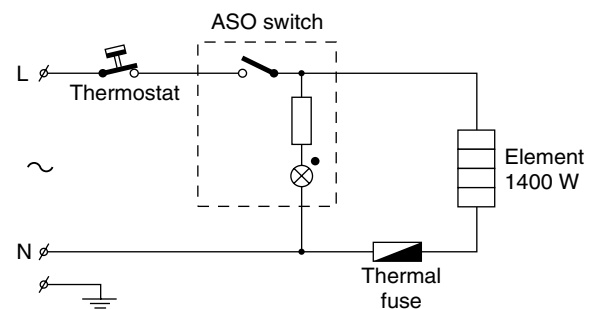
Service Manual

PRODUCT INFORMATION

- This product meets the requirements regarding interference suppression on radio and TV.
- After the product has been repaired, it should function properly and has to meet the safety requirements as officially laid down at this moment.

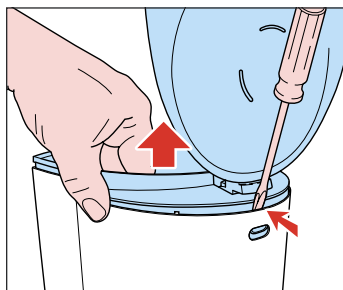
TECHNICAL INFORMATION

- Voltage : 100 V, 120 V, 220 - 240 V
- Frequency : 50 - 60 Hz
- Power consumption : 1400 W
- Coloursetting : Black/Metal gloss
- Contents : 1200 cc
- SAP coding : HD7634/61



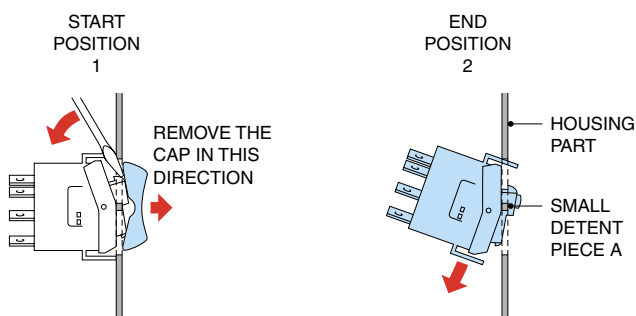
DISASSEMBLY- AND RE-ASSEMBLY ADVISE

- If the switch has to be replaced please follow the next steps:
- Remove bottom base plate.
- Pull the complete pump unit (including hose pieces) downwards until the hose pieces are loosened from the two water tank pipes. (hose pieces and wires must stay connected to the pump).
- Remove the complete top cover including the water tank. (see picture 1)
- Now it is possible to get to the switch.



picture 1

- To replace the switch, first remove the switch cap from the switch by means of a small screwdriver. (The cap has to be loosened at the inner side of the housing by bending a little bit the plastic paw from the switch cap) (see picture 2)



picture 2

- Place the new switch on connect the wires, push the plastic switch cap back on the switch.
- Insert the complete top cover assy including plastic tank gently back into the housing.
- Take the pump unit and attach the hose pieces to the water tank pipes of the previously inserted tank. (be sure that the hose pieces are well attached to the water tank pipes, otherwise leakage problems can occur)
- Assemble the base plate again.

Notes for replacing pump assy:

Ordering/replacing Low voltage Pump assy:

Because of standardisation of the range of spare parts Pumps position number 25. The following has to be done before the ordered LV pump can be build in the appliance. The white wire from the pump that is connected to the element and Thermostat can be removed. When the wire is removed the new pump can be connected as the predecessor.

Safety warning connecting phase (L) brown wire to the pump:

Please be carefully and always lead the Phase (L) brown wire through the pipe, see position number 28 before connecting it to the pump element!

REPAIR INSTRUCTION

Colour code identification:

To determine which service manual is suitable for the appliance that has to repaired please check the following. Look at the type plate identification from the appliance on the second row.

The first sledge number is the colour code for that appliance. (/99)

(for example below the colour code is /01)

Example of a type plate:

TYPE HD7624
/01 /A
...
...

At the service manual heading, the type and colour code are also mentioned for example HD7624/01
/01 is the colour code.

Descaling:

Regular de-scaling will prolong the life of your appliance and will guarantee optimal brewing results.

Follow below steps to de-scale the appliance.

1. Fill the water tank with white vinegar.
2. Let the appliance complete two runs.
3. Let the appliance complete two more flushing cycles with clean water to rinse away all vinegar.

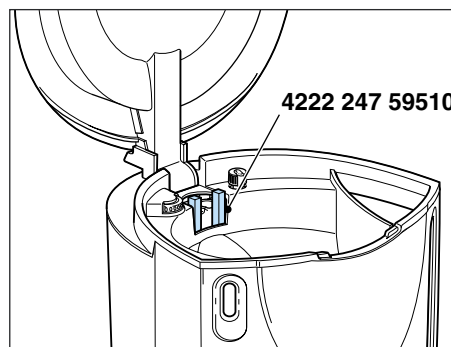
If the above procedure does not restore the function, then switch off the coffee maker when the acid passed through during appr. 3 min.

Keep the appliance in this condition overnight and continue the steps see above procedure.

Transportation lock:

To prevent damaging the dosing/weighting system in case the appliance has to be shipped/transported, It is possible to order a special transportation lock.

For the position of the transportation lock see picture 3.

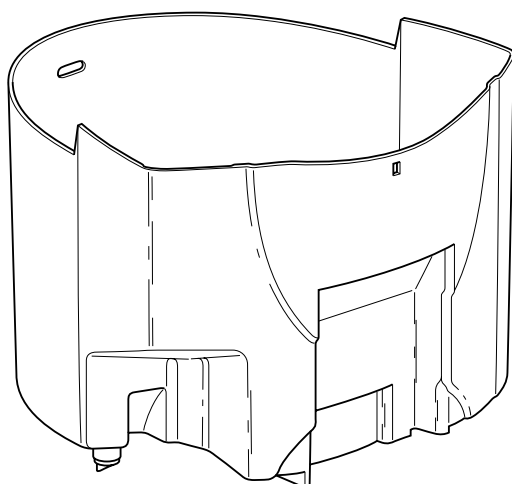
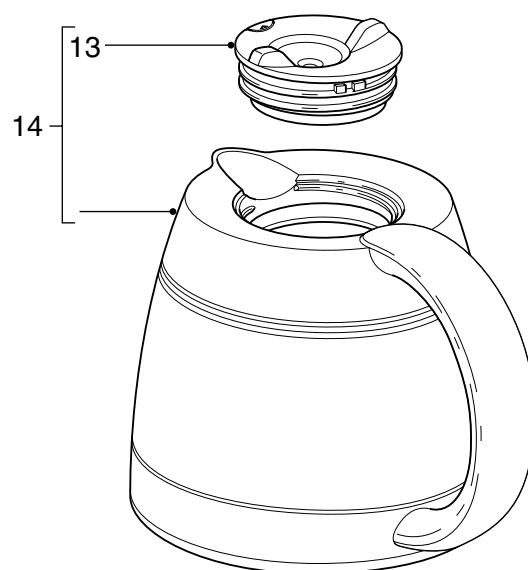
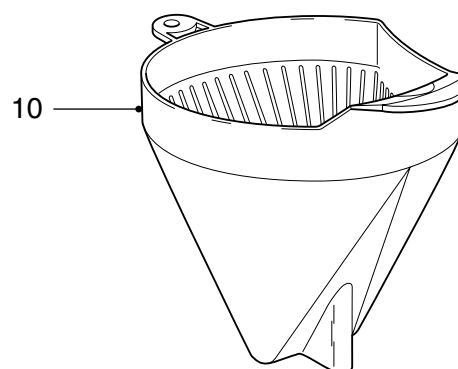
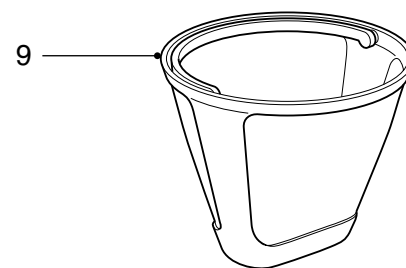
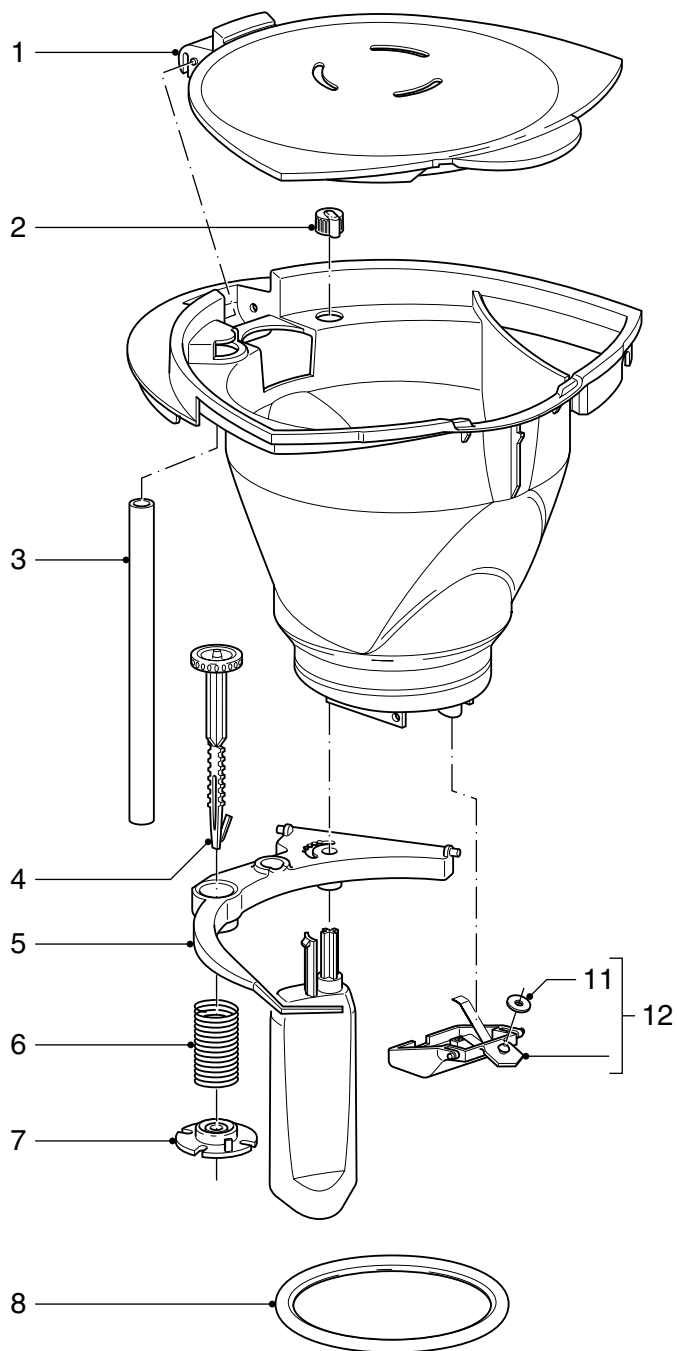


picture 3

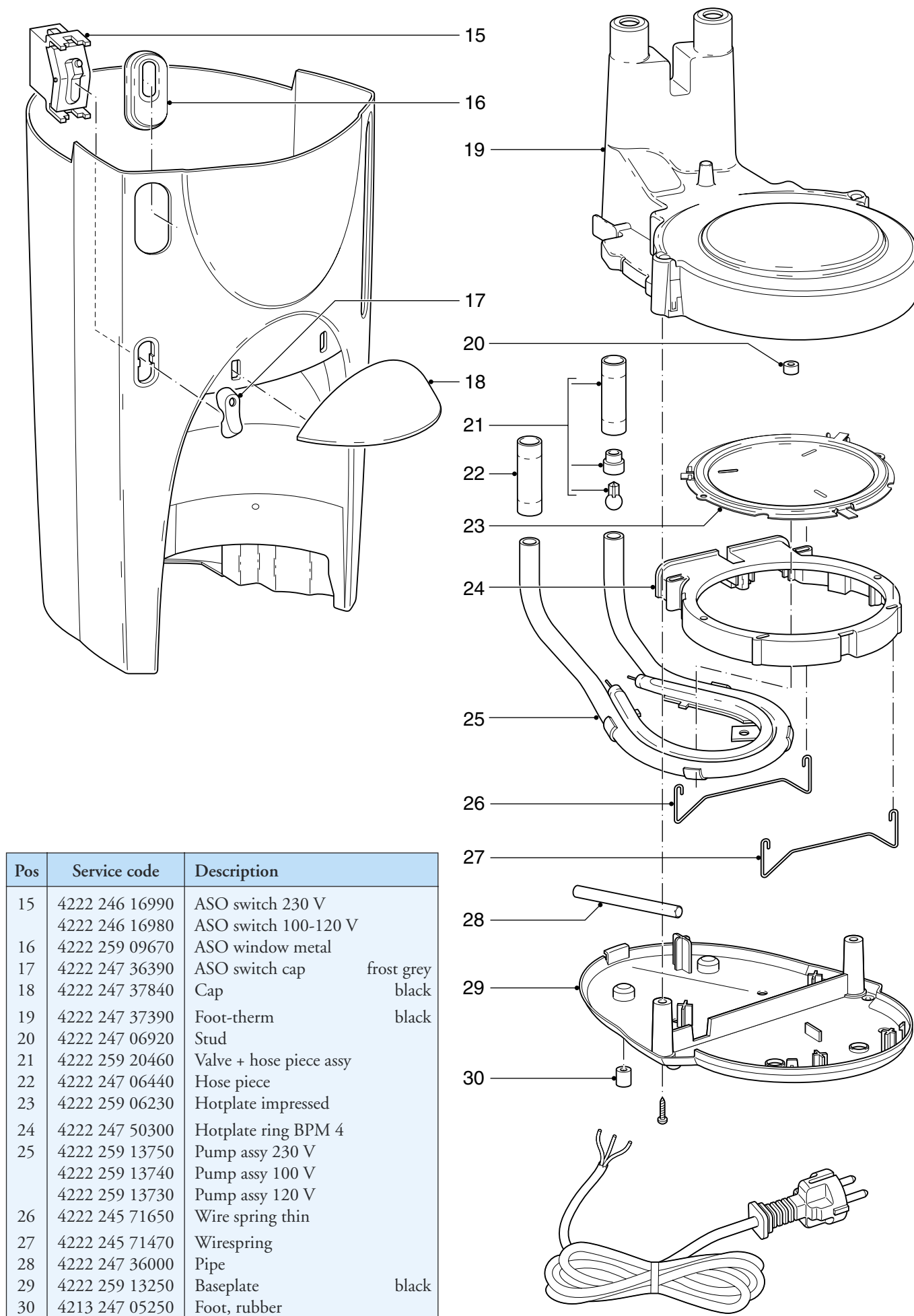
The code number transportation lock: 4222 247 59510

OPTIONAL (accessories)

- Commercial trade number thermos jug + juglid:
HD7973/61 (High gloss/Black)



Pos	Service code	Description	
1	4222 259 13610	Tank lid assy	black
2	4222 247 36500	Strenght select button	
3	4222 247 35580	Spoutpipe essence 2002	
4	4222 247 35620	Tare-adjuster	
5	4222 259 02330	Frame ADS printed	
6	4222 240 06350	ADS spring	
7	4222 247 35660	Spring support	
8	4222 247 06880	Sealing ring tank	
9	4222 247 36680	Permanent filter	
10	4222 247 35700	Filterholder	
11	4222 247 06630	Dripstop ring	
12	4222 259 05070	Dripstop assy	
13	4222 259 14740	Thermos juglid	black
14	4222 259 17260	Thermos jug+lid	high gloss/black



Pos	Service code	Description
15	4222 246 16990	ASO switch 230 V
	4222 246 16980	ASO switch 100-120 V
16	4222 259 09670	ASO window metal
17	4222 247 36390	ASO switch cap
18	4222 247 37840	Cap
19	4222 247 37390	Foot-therm
20	4222 247 06920	Stud
21	4222 259 20460	Valve + hose piece assy
22	4222 247 06440	Hose piece
23	4222 259 06230	Hotplate impressed
24	4222 247 50300	Hotplate ring BPM 4
25	4222 259 13750	Pump assy 230 V
	4222 259 13740	Pump assy 100 V
	4222 259 13730	Pump assy 120 V
26	4222 245 71650	Wire spring thin
27	4222 245 71470	Wirespring
28	4222 247 36000	Pipe
29	4222 259 13250	Baseplate
30	4213 247 05250	Foot, rubber