

Domestic Appliances and Personal Care

Service Manual

MSH-coding 8825 704 00000

PRODUCT INFORMATION

Voltage	: 220-230 V
Frequency	: 50 Hz
Power consumption	: 1200 W (boyler)
	: 60 W (pump)
Coloursetting	: black

REPAIR INSTRUCTIONS

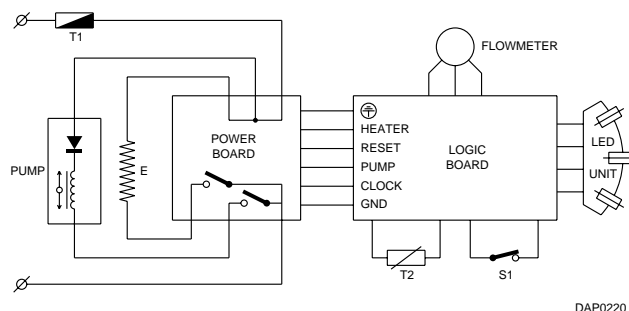
1. Descaling

Operate the appliance twice in the same way as making Espresso, but fill the watertank with vinegar or a 10-15% solution of either vinegar-acid, citric acid or tartaric acid in cold tap water.

To remove scale that has set in the inside of the steam pipe, let the appliance produce steam for some time.

For persistent scale interrupt the descaling procedure once or twice after pumping and steaming hot vinegar and let the vinegar act on the scale for at least half an hour. Continue the procedure. Clean the outlet plate (item 8)

After the descaling procedure, operate the espresso machine twice with tap water in order to rinse away any residual substances.



DAP0220

3. Circuit diagram

S1 : Microswitch for making steam (21)

This microswitch is activated by setting the selector knob (39) to position "steam".

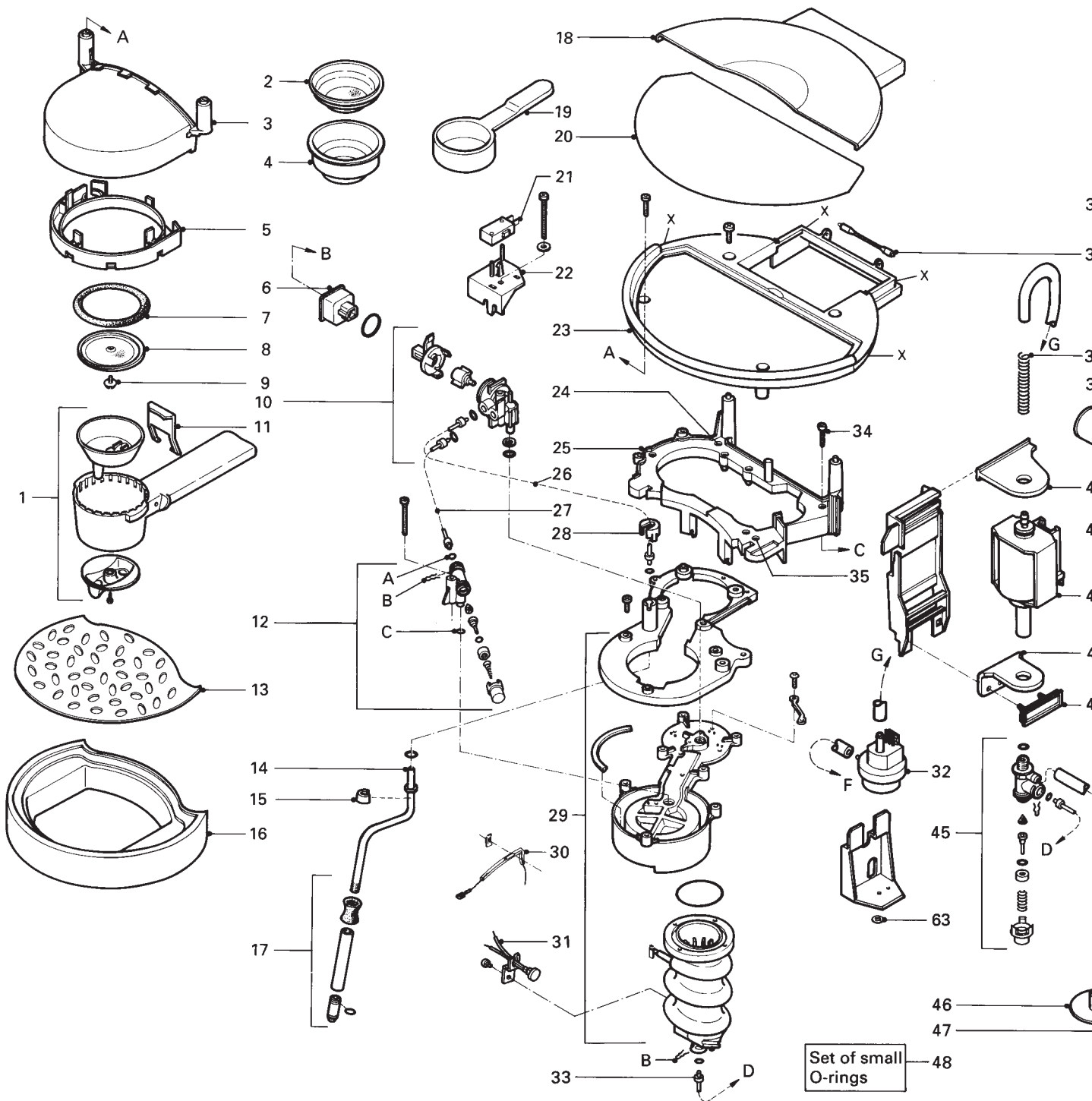
T1 : Fuse (30) 192 °C

T2 : Temperature sensor (31) to feed the electronic control unit (55).

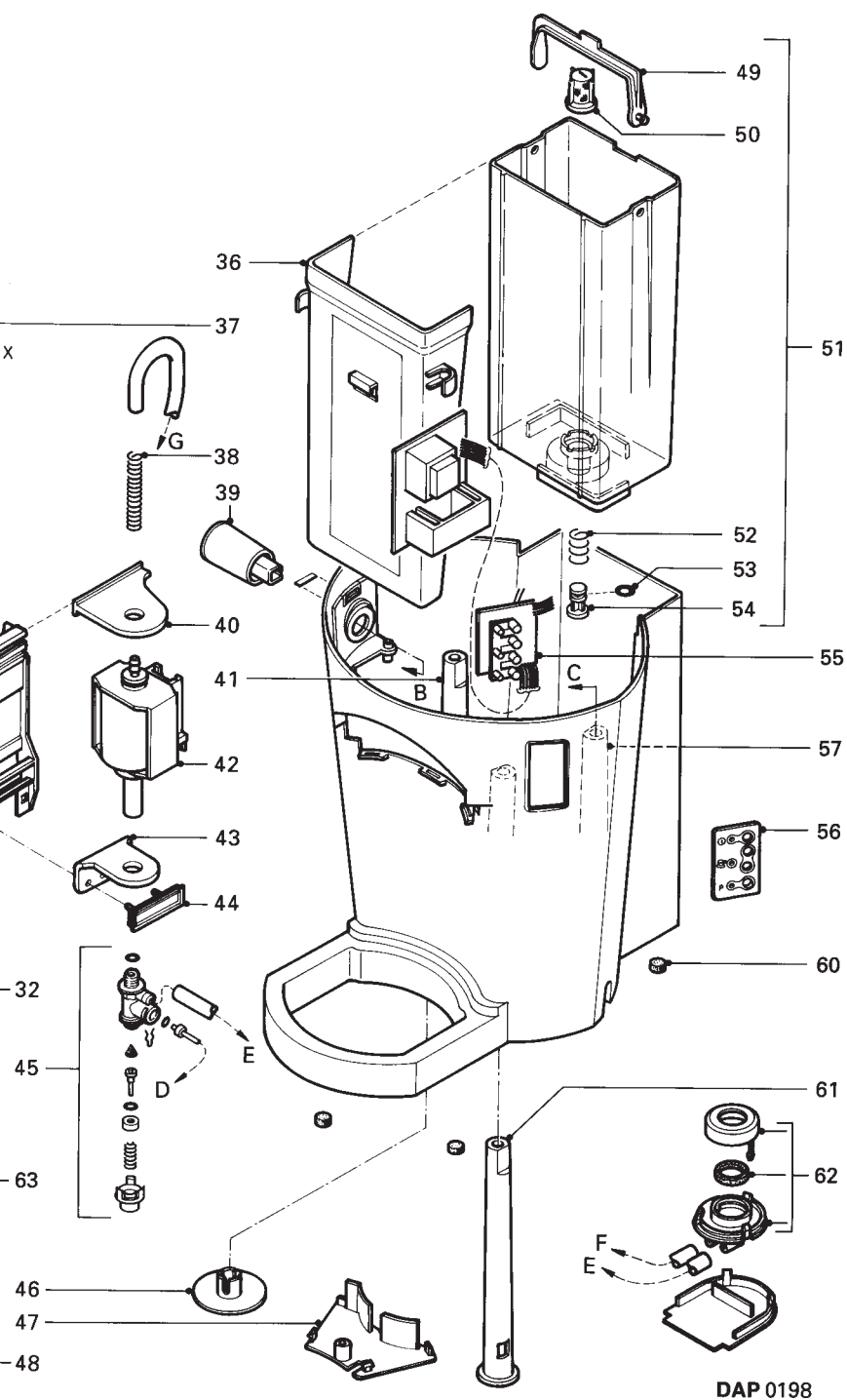
Note: Figures () refer to items in the exploded view drawing.



HD5704/A



1	4822 256 10258	Filter holder + item 11	11	4822 401 11632	Filter clip	21	4822 271 30844	Microcos
2	4822 480 10109	Filter 1-cups	12	4822 360 10221	Pressure regulator unit	23	4822 464 10181	Cover f
3	4822 442 00433	Front cover black	13	4822 466 11169	Drip plate	26	4822 530 10304	Tube u
4	4822 480 10111	Filter 2-cups	14	4822 530 10301	Steam pipe	27	4822 530 10302	Tube u
5	4822 464 10179	Frame plate black	15	4822 532 12552	Fixing ring	28	4822 532 12553	Fixing r
6	4822 528 11021	Distribution unit	16	4822 444 10183	Drip tray	29	4822 259 10204	Boiler u
7	4822 532 52583	Sealing ring	17	4822 360 10224	Steaming device	30	4822 252 11175	Fuse u
8	4822 480 50521	Sprinkler	18	4822 442 00434	Lid	32	4822 690 10083	Flow m
9	4822 502 21509	Screw	19	4822 395 10281	Spoon	33	4822 530 10303	Tube u
10	4822 360 10219	Valve unit	20	4822 466 11171	Plate	37	4822 417 11314	Hinge



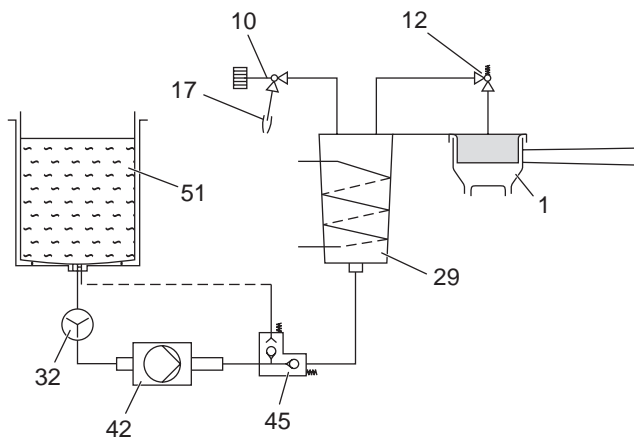
3. Instructions for dismantling the appliance

- Remove loose parts like tank lid etc.: 18, 20, 46, 51, 39 and terminal cover 47
- Cover part 23 can be removed by loosening the four fixing screws and plastic snaps at place X. Remove the two switches 55 and 58.
- Unscrew screw 24 and remove its support pin 41 after unscrewing the corresponding screw at the bottom. Remove terminal block and valve set 62 (fixed with two snaps).
- Detach the steam pipe 14 by turning around fixing ring 15 along 90 degrees (bayonet fixing methode)
- Now also loosen the complete pump module 25 and 29 from studs 57 and 61 by unscrewing screws 34 and 35 of part 25.
- Remove part 3 and 5
- Now the complete pump module can be taken out to make further repairs.

4. Exchanging pump 42

Remove at topside the tube 38 and at bottomsides unit 45. After detaching 44 (plastic snaps) and removing rubber support 43, the pump can be replaced.

271 30844	Microswitch	125-250 V	39	4822 410 10596	Selector knob	51	4822 418 10197	Container	complete
464 10181	Cover frame		40	4822 404 10909	Pump support, upper	53	4822 532 12554	Dripstop rubber ring	
530 10304	Tube unit I		42	4822 360 10222	Pump 220-240 V	55	4822 214 11757	Control unit (+ 56 + 31)	
530 10302	Tube unit II		43	4822 404 10911	Pump support, lower	60	4822 462 10767	Foot	
532 12553	Fixing ring (bayonet)		44	4822 466 11172	Fixing clamp	62	4822 360 10223	Valve unit	
259 10204	Boiler unit	230 V	45	4822 690 10082	De-airing unit	63	4822 492 11194	Spring clamp	
252 11175	Fuse unit	192 °C	46	4822 442 00443	Bottom part	1) Consisting of 5xA, 5xB, 1xC (See Exploded View)			
690 10083	Flow meter		48	4822 530 10299	Set of O-rings + clamps 1)				
530 10303	Tube unit III		49	4822 498 10591	Handle				
417 11314	Hinge		50	4822 480 10112	Water filter				



5. Flow system (schematic diagram):

- 51 Container with water.
- 42 Pump. Operates by means of a vibrating piston.
- 45 De-airing unit. Makes sure that the pump will really start to pump water when boiler and tubes are empty.
- 29 Boiler with element.
- 17 Steaming device.
- 10 Distribution unit. Allows to select between making coffee and producing steam.
- 12 Pressure unit. Maintains a continuous pressure in the boiler during steaming.
- 32 Flowmeter measures the amount of water by means of a blade wheel inside, to be used for programming the electronic control (see Direction for use).

Note: Figures refer to items on the exploded view drawing