



Philips Domestic Appliances and Personal Care

# Service Manual

## PRODUCT INFORMATION

Motor		: Synchronus
Power		: 25 W
Cone speed	HR 2746	: 50 r.p.m.
	RI 2746	: 59 r.p.m.
Cord Length		: 1.2 m
Continuous running time		: 6 min.
Bowl capacity		: 1000 ml

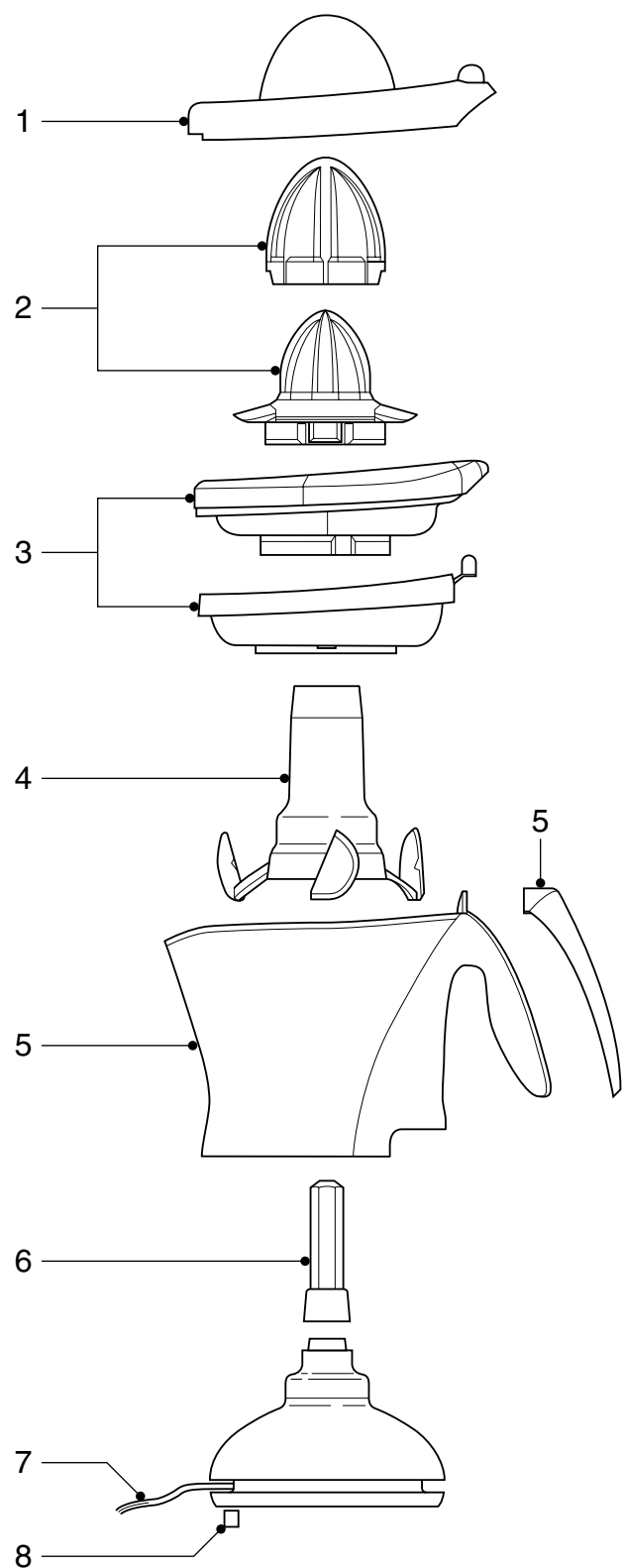
## SERVICE INFORMATION

- Drive shaft (item 6) can be pulled off.
- Components configuration on exploded view may differ from specific versions.  
However, the actual components are discernable by code number.

Product meets the requirements regarding interference suppression on radio and TV.

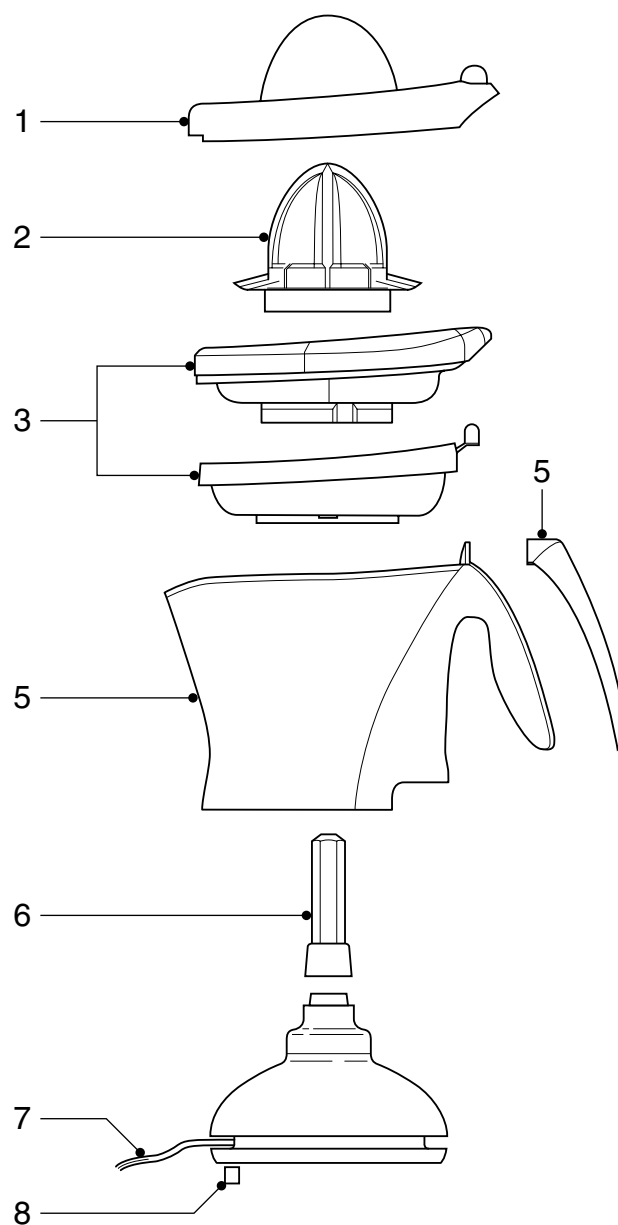
After the product has been repaired, it should function properly and has to meet the safety requirements as laid down officially established at this moment.

## HR 2746



1	Dust cover		4206 133 92320
2	Cone/Inner Cone	HR 2746	4206 136 52020
	Cone	RI 2746	4206 133 88180
3	Pulp Selector/Sieve		4206 136 51470
4	Stirrer	HR 2746	4206 133 92240

## RI 2746



5	Jug/Handle Inlay		4206 136 51450
6	Spindle		4206 133 88110
7	Mains cord standard		4203 065 62490
8	Foot standard		4822 462 40374