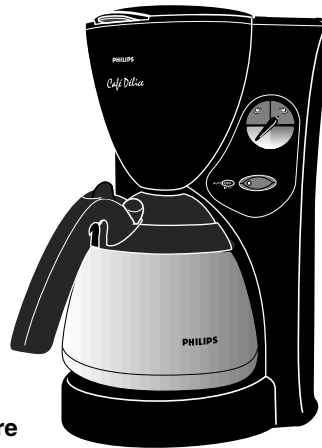


# Service Service Service



Philips Domestic Appliances and Personal Care

# Service Manual

## PRODUCT INFORMATION

SAP coding HD 7612/6

Voltage : 230V  
 Frequency : 50 - 60Hz  
 Power consumption : 1400W/850W  
 Contents jug : 1200 cc  
 Coloursetting : Black

## SERVICE INFORMATION

Thermostat switch-off temp : 160°C (T1)  
 Thermostat switch-off temp : 140°C (T2)  
 Thermal fuse cut-off temp : 227°C

## REPAIR INSTRUCTIONS

### 1. Electrical circuit

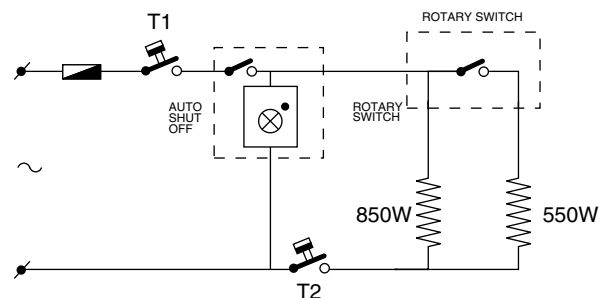
When the appliance does not work, check the electrical circuit. If the thermal fuse or thermostat prove defective, the complete pump unit has to be replaced.

### 2. De-scaling

If the water system is nearly or less clogged by scale then operate the coffeemaker a few times with vinegar or with a 10-15% solution of either vinegar-acid, citric acid or tartar-acid, into cold tap water.

**Do not use other de-scaling agents** as these may harm the appliance.

If this procedure does not restore the function, then switch off the coffeemaker when the acid has passed through during appr. 3 min. Keep the appliance in this condition overnight and continue/repeat the cleaning operation. After the de-scaling procedure, operate the coffeemaker twice with tap water in order to rinse away any residual substances.



### 3. Pump unit removal

To separate the pump unit (item 24) from the hotplate unit (item 22), the two plastic snaps at place A have to be loosened. Then the pump unit can be lifted out easily.

### 4. Exchanging the switch unit

Remove the panel (11) by carefully pushing a small screwdriver into the chink at point A and moving it towards to point B (see exploded view). Do not damage the housing. If the panel has been damaged, get a new one.

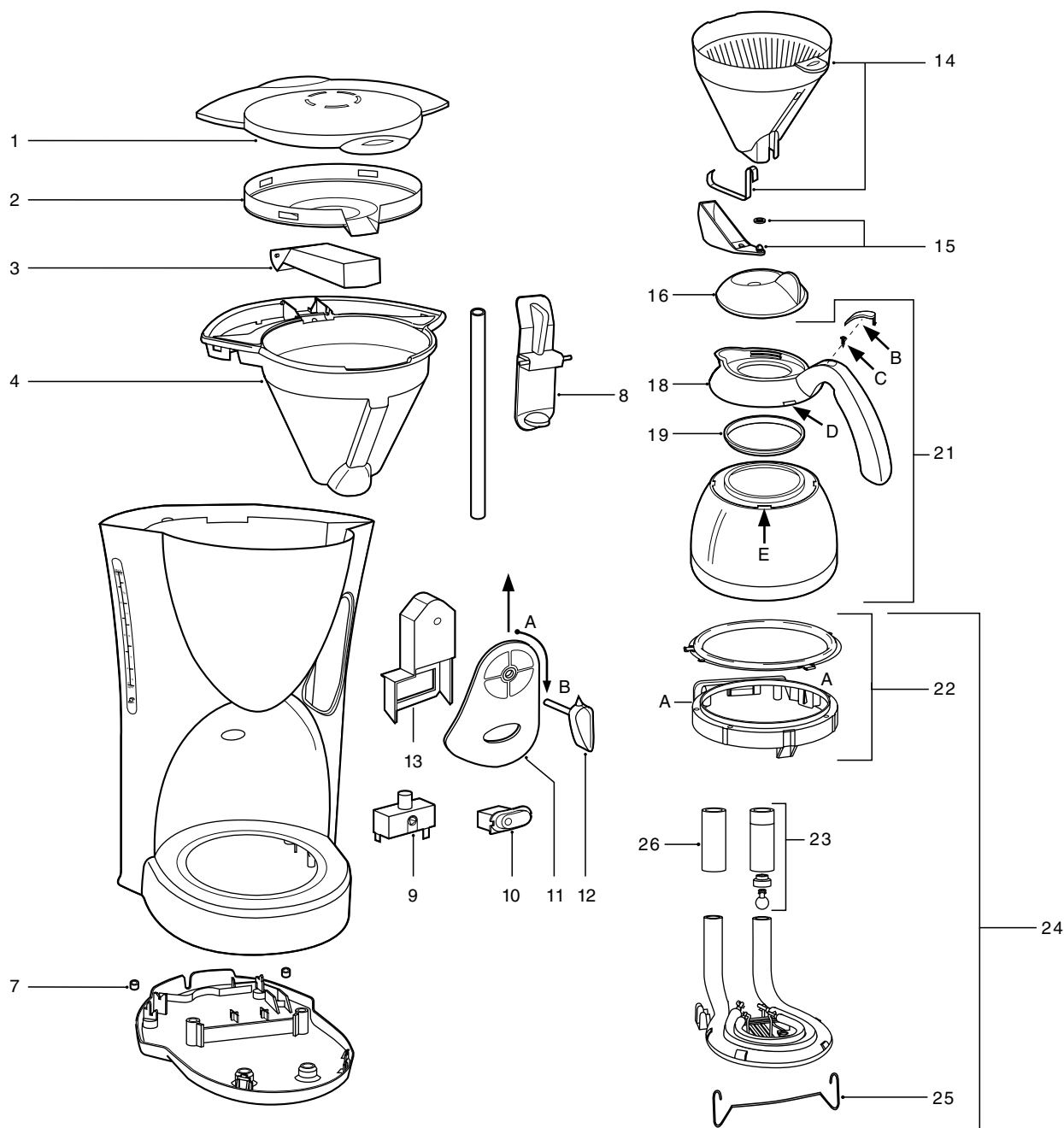
### 5. Thermosjug handgrip removal (bajonet catch)

To separate the handgrip 18 from the metal jug, lift up the small cover B and unscrew the screw C. Then put a small screwdriver at place D. Lift up the handgrip and turn simultaneous the handgrip anti-clockwise 45°. Before (re)placing the handgrip, apply a drop of detergent to the sealing ring 19. This will make it easier to position the handgrip by pushing it downwards and rotating.



# PHILIPS

# HD 7612/6



1	4822 442 01697	Tank lid	
2	4822 466 12151	Spout disc	
3	4822 529 10423	Spout	
4	4822 256 10543	Rim	
7	4822 462 40374	Stud	
8	4822 402 11252	Jug lever	
9	4822 273 10332	Rota switch	
10	4822 276 13968	Aso switch	
11	4222 259 01020	Panel printed	
12	4822 410 11105	Rota button	salmon
13	4822 247 55780	Switch casing	
14	4222 259 01810	Filterholder	
15	4822 360 10435	Drip stop assy	
16	4822 442 01698	Lid assy	
18	4822 498 10722	Carrier assy (pos. 18 + B + screw C)	

19	4822 532 12886	Sealing ring	
21	4822 418 10411	Thermos jug assy	
22	4222 259 01820	Hotplate unit therm	
23	4822 360 50864	Valve hose assy	
24	4222 259 29470	Pump 1400 W therm	
25	4822 492 71174	Wire spring	
25	4822 532 21371	Hose piece	
***	4222 001 77760	DFU	GBR, DEU, FRA, NLD ESP, PRT, ITA, TUR.
***	4222 001 77770	DFU	Nordic

## Notes:

- Optional part for use as an insert in item 5:  
4822 480 50479 Permanent filter nylon  
4822 480 50402 Permanent filter gold coated
- Commercial trade number of the complete thermosjug is HD 7950